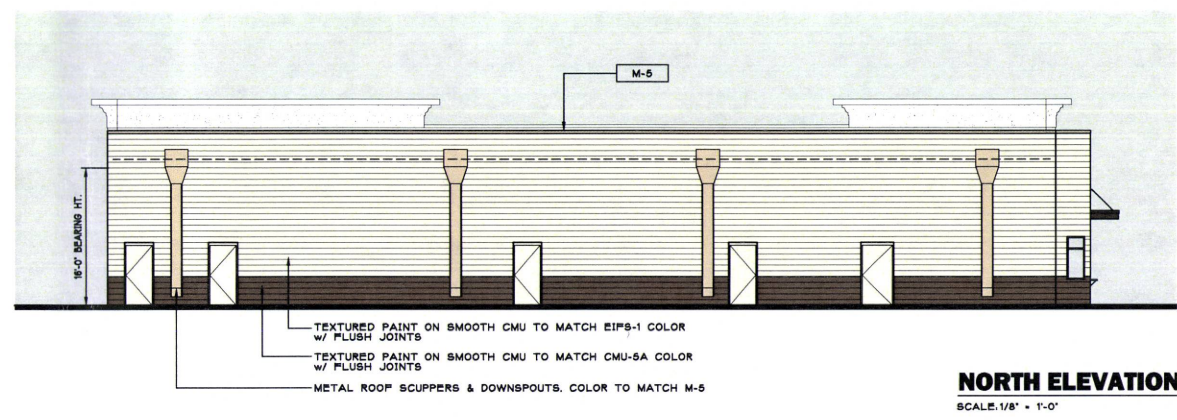
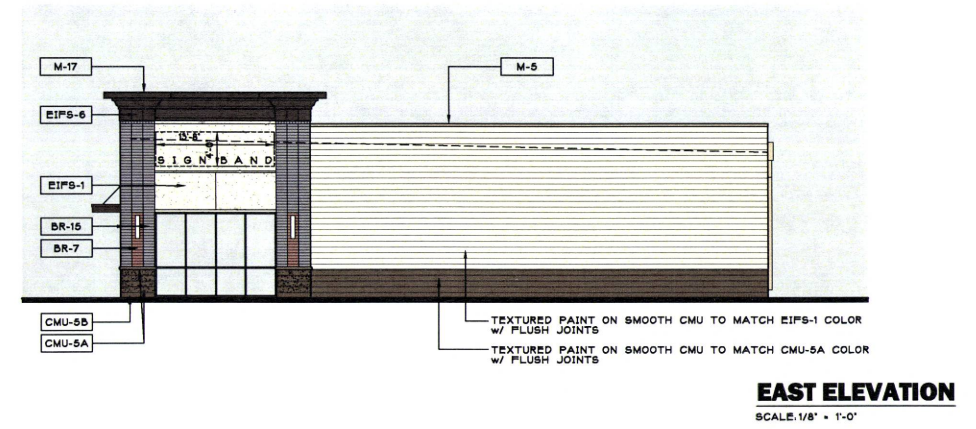
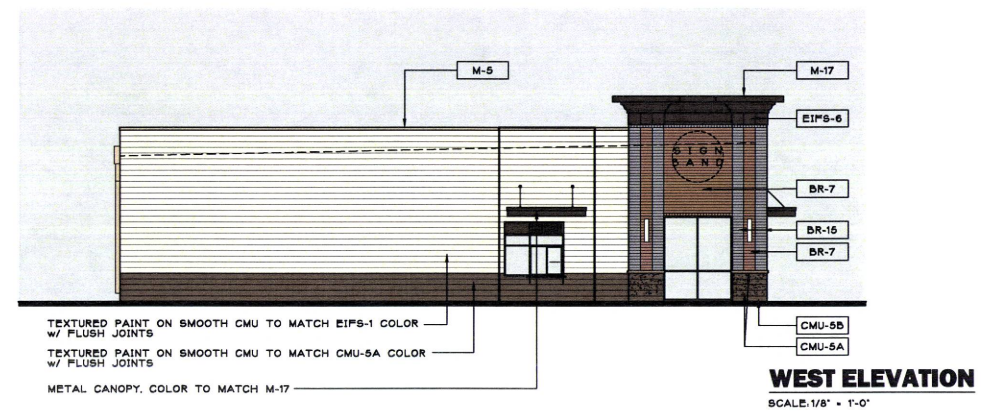


MATERIALS LEGEND (BASIS OF DESIGN. CONSTRUCT MOCK-UP BEFORE CONTINUING WITH WORK)

NOTE	MATERIAL	MANUFACTURER	MOD# / COLOR	CONTACT
BR-7	BRICK VENEER	CLOUD CERAMICS	COLOR: OLD ROSE - TEXTURE SMOOTH. UTILITY SIZE	Metro Brick Inc., Greg Seaburg 952.417.0200
BR-15	BRICK VENEER	ENDICOTT	COLOR: MANGANESE IRONSPOT - TEXTURE: VELOUR. UTILITY SIZE	Metro Brick Inc., Greg Seaburg 952.417.0200
CMU-5A	CMU VENEER	INTERSTAR	COLOR: BD-15-1 - TEXTURE: ROCK FACE	Dakota Block Company, Barry Mertea 605.342.6070
CMU-5B	CMU VENEER	INTERSTAR	COLOR: BD-15-1 - TEXTURE: SMOOTH	Dakota Block Company, Barry Mertea 605.342.6070
EIPF-1	EXTERIOR INSULATION FINISH SYSTEM	DRYVIT	COLOR: 113 AMARILLO WHITE - TEXTURE: SANDBLAST (LIGHT)	Lutz Company, 763.315.5886
EIPF-3	EXTERIOR INSULATION FINISH SYSTEM	DRYVIT	COLOR: 399 COPPEE MILK - TEXTURE: SANDBLAST (LIGHT)	Lutz Company, 763.315.5886
EIPF-6	EXTERIOR INSULATION FINISH SYSTEM	STO	COLOR: 20916 - TEXTURE: FINE SAND (DARK)	Lutz Company, 763.315.5886
M-5	METAL COPING	UNA-CLAD	COLOR: SIERRA TAN	-
M-17	METAL COPING	UNA-CLAD	COLOR: MANSARD BROWN	-



RECEIVED

MAR 08 2013

Rapid City Community Planning
 & Development Services

ZONING FLOT
 03/05/13