



TERRY R. STOCKER, LTD
 13791 DUMBER RD. RAPID CITY, SD 57702-7332 (605) 341-4825

COMMERCIAL BUILDING
 FOR: **BILL SINGER**
SOUTH PLAZA DRIVE
RAPID CITY, SOUTH DAKOTA

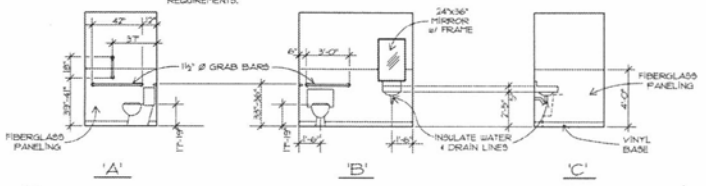
PROJECT NO: 1205
 DRAWN BY: T.S.
 CHECKED BY: T.S.
 DATE: 02/01/13
 REVISIONS: 02-22-13

A1

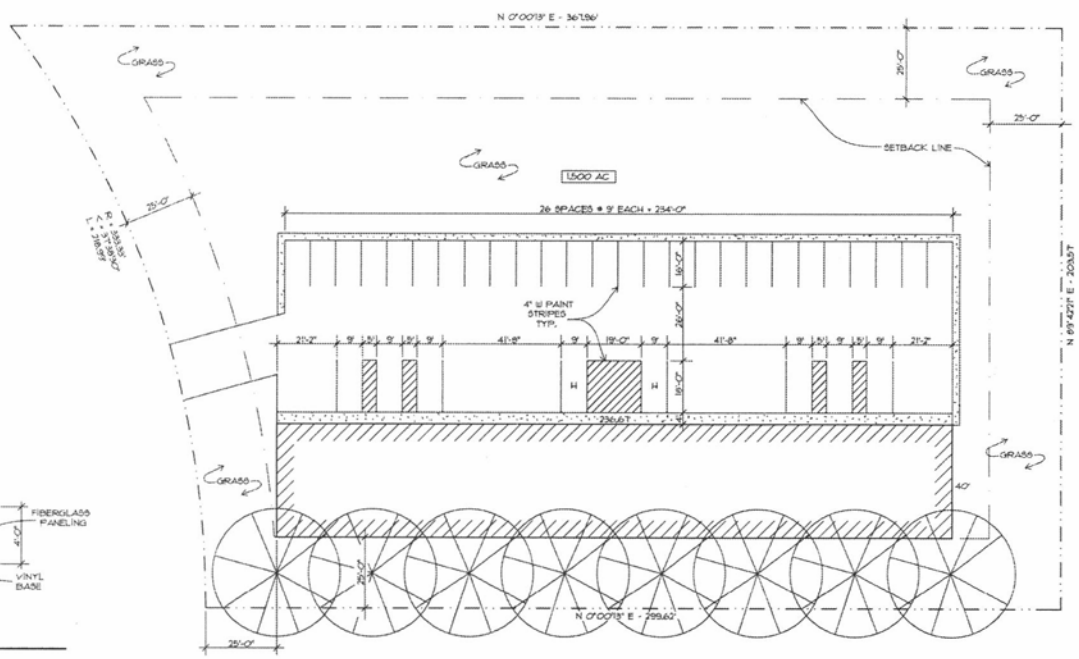


1
TOILET ROOM PLAN
 1/4" = 1'-0"

NOTE: SOAP DISPENSER, WASTE RECEPTACLE, TOILET & PAPER TOWEL DISPENSER UNITS TO BE FURNISHED BY PRODUCT SUPPLIERS & INSTALLED PER A.D.A. REQUIREMENTS.



2
TOILET ROOM ELEVATIONS
 1/4" = 1'-0"



LANDSCAPE PLAN
 1" = 20'-0"

NOTE: SEE CIVIL DOCUMENTS FOR GRADING, PAVING, AND ALL OTHER SITE IMPROVEMENTS

LEGAL DESCRIPTION:
 TRACT H, ROBTAIN SPRINGS PARK,
 LOCATED IN THE NE 1/4 OF THE SE 1/4
 OF SECTION 21, T2N, R24W, B1M,
 RAPID CITY, PENNINGTON COUNTY,
 SOUTH DAKOTA

PARKING REQUIREMENTS:
 SERVICE FACILITY (400 PER 1000 SF/GFA)
 9,461 SF + 1,000 x 4 = 34 STALLS
 - 1 STALL (STORAGE SPACES)
 - 6 STALLS (WORK BAYS)
 - 27 STALLS REQUIRED
 34 STALLS PROVIDED
 (2 HANDICAP STALLS)

LANDSCAPE REQUIREMENTS:
 SITE AREA • 65,340 SF.
 BUILDING AREA • 9,461 SF.
 55.67% POINTS REQUIRED
 GRASS - 4,400 SF x 10 POINTS / SF • 44,000 POINTS
 TREES - 8 LARGE TREES x 2,000 POINTS EA. • 16,000 POINTS
 (LINDEN, ASH, OR HONEY LOCUST) • 60,000 POINTS PROVIDED