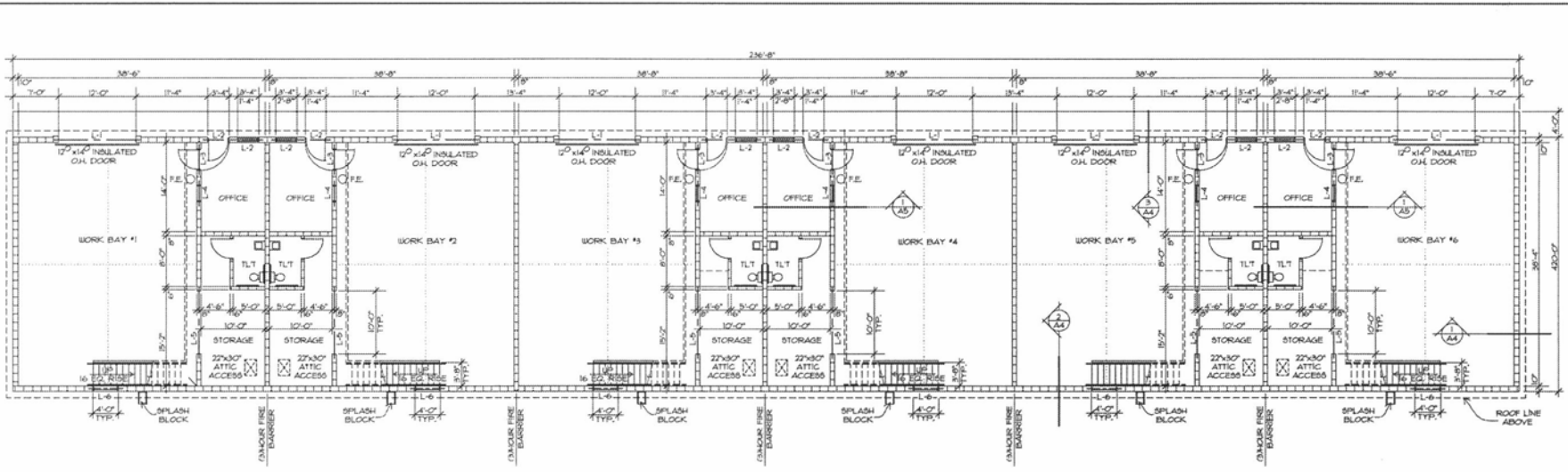




TERRY R. STOCKER, LTD
 13781 EMER RD. RAPID CITY, SD 57702-7332 (605) 341-4825



NOTES:

- INDICATES LOCATION OF CONC. SLAB CONTROL JOINTS
- F.E. INDICATES LOCATION OF WALL MOUNTED FIRE EXTINGUISHERS
- ALL DOORS TO BE 3'-0" x 7'-0" HOLLOW METAL IN HOLLOW METAL FRAMES GROUTED SOLID. (EXTERIOR DOOR & FRAME TO BE GALVANIZED)
- ALL CPJs TO BE SEALED AND PAINTED



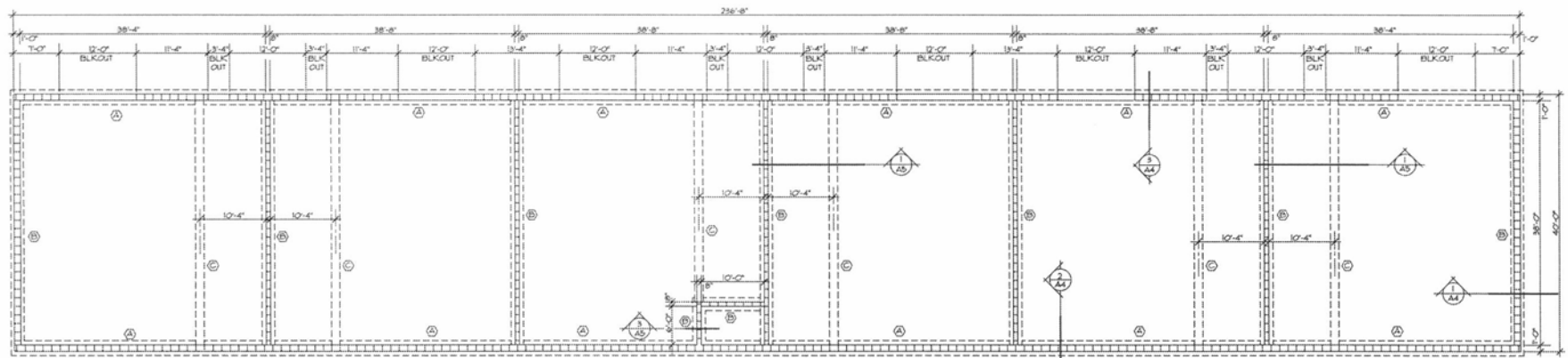
FLOOR PLAN

1/8" = 1'-0"

LINTEL SCHEDULE (A)

NO.	SIZE	LENGTH
L-1	12"x18" w/ 5/16"x10" STL. PL.	15'-4"
L-2	10"x12" BOND BEAM w/ (2) #5 & (2) #4 BOTTOM, SOLID GROUTED	4'-8"
L-3	8"x12" BOND BEAM w/ (2) #5 & (2) #4 BOTTOM, SOLID GROUTED	4'-8"
L-4	8"x12" BOND BEAM w/ (2) #5 & (2) #4 BOTTOM, SOLID GROUTED	4'-0"
L-5	12"x18" w/ 5/16"x10" STL. PL.	11'-4"
L-6	10"x12" BOND BEAM w/ (2) #5 & (2) #4 BOTTOM, SOLID GROUTED	5'-4"

- LINTEL NOTES:**
- (1) GROUT 1/4" THICK (2) CELLS EACH SIDE OF OPENING. ONE (1) CELL @ 4'-0" OPENING AND PROVIDE TWO (2) #5 BAR EACH SIDE, FULL HEIGHT AT 1/4" CELL
 - (2) GROUT 1/4" CELL EACH SIDE OF OPENING & PROVIDE (1) #5 BAR FULL HEIGHT
 - (3) LINTEL REINFORCING SHALL BE CONTINUOUS AROUND BUILDING AS SHOWN BY BOND BEAM LOCATIONS IN SECTIONS. (EXTEND 4'-0" MIN. BEYOND OPENINGS AT ALL OTHER LOCATIONS)



FOUNDATION PLAN

1/8" = 1'-0"

FOOTING SCHEDULE

NO.	SIZE
(A)	CONT. 28"x12" CONC. w/ (3) #5 BARS
(B)	CONT. 24"x12" CONC. w/ (3) #5 BARS
(C)	CONT. 16"x12" THICKENED SLAB w/ (2) #5 BARS

COMMERCIAL BUILDING
 FOR: **BILL SINGER ARCHITECTS**
 SOUTH PLAZA DRIVE
 RAPID CITY, SOUTH DAKOTA

PROJECT NO. 1305
 DRAWN BY: I.S.
 CHECKED BY: I.S.
 DATE: 02/01/13
 REVISIONS: 1

A2