

SURVEYOR'S NOTES

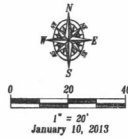
Utilities shown are from visual inspection, sketches provided by individual service providers and Utility Locates performed by South Dakota One Call, Ticket Number 121 180 361. The actual location of utilities and service lines may vary from the information shown hereon. We assume no liability for utilities and services that are not marked or are incorrectly defined by utility locators.

Bench Mark: City BM (NGVD28)

NOTE: Coordinate layout data available on request. Standard fees apply.

LEGEND

- ⊕ = Sanitary Sewer Manhole (Unless noted)
- ⊕ = Sanitary Sewer Service Line Cleanout
- ⊕ = Fire Hydrant
- ⊕ = Water Valve
- ⊕ = Curb Stop
- ⊕ = Utility Pole
- ⊕ = Area Light
- ⊕ = Electric Meter
- ⊕ = Telecommunications Vault
- ⊕ = Telecommunications Pedestal
- ⊕ = Natural Gas Meter
- ⊕ = Sign
- ⊕ = Mail Box
- = Underground Electric
- = Overhead Utility Line
- = Underground Telephone
- = Fiber Optic Line
- = Natural Gas Line



Proposed Lot Area 74,141 SF
 Proposed Building Area 6,890 SF
 Required Landscape Pts 67,251 Pts

Planting Key

Large Coniferous Trees		
Colorado Blue Spruce	9	18,000
Small Coniferous Trees		
Compact Austrian Pine	1	500
Medium Deciduous Trees		
Outleaf Birch - CB	13	13,000
Small Deciduous Trees		
Canada Red Cherry - CR	5	2,500
Spring Snow Crab - SS	7	3,500
Shrubs		
Buffalo Juniper - BJ	29	7,250
Snowmound Spiraea - SM	42	10,500
Turf		
Grass	1,264 S.Y.	12,640
TOTAL POINT VALUE		67,890
Surplus Points		639

Fisk Land Surveying & Consulting Engineers, Inc.
 1022 Jack Street, Suite 200, Box 8154
 Rapid City, South Dakota 57709
 (605) 346-1036 (ph) (605) 341-1112 (fx)
 info@fiskland.com



The information hereon is copyrighted material, and specific to the date, client and purpose as stated. No warranty or guarantee is expressed or implied to any party, for any other purpose at any time except as stated.

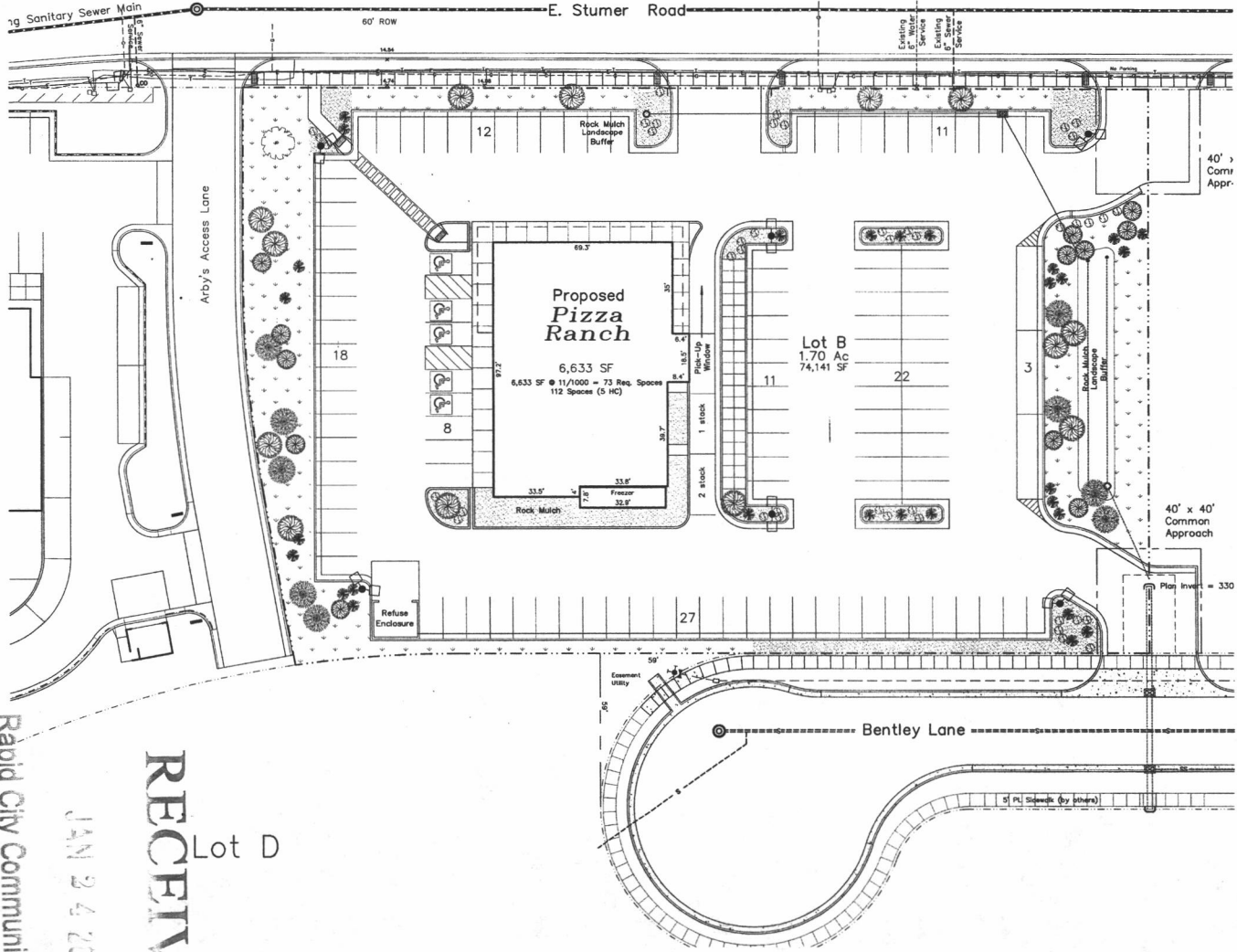
Subdivision Improvements
 Lot B of Lot 5 of North 80 Subdivision
 Section 19, T1N, 80E, B.L.M.
 Pizza Ranch
 Rapid City, Pennington County, South Dakota

Surveyed by: ML
 Date: 2013
 Drawn by: RWF
 Date: 9/28/12
 Checked by: WF
 Revisions

Project No. 12-12-02

Landscape Plan

ONE CALL BEFORE DIGGING
 1-800-781-7474



Rapid City Community Planning & Development Services

JAN 24 2013

RECEIVED

Lot D