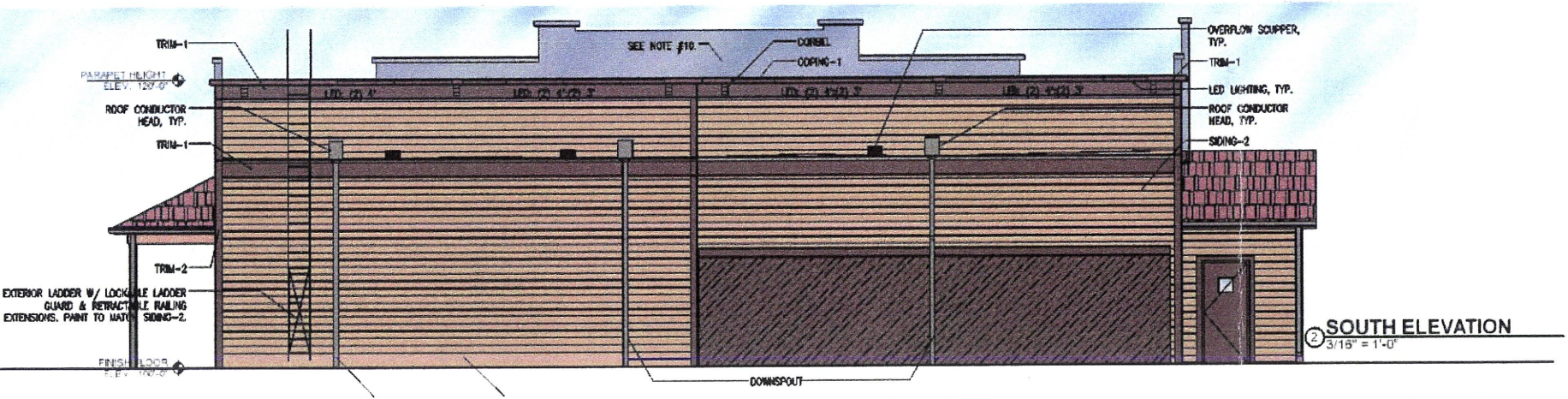
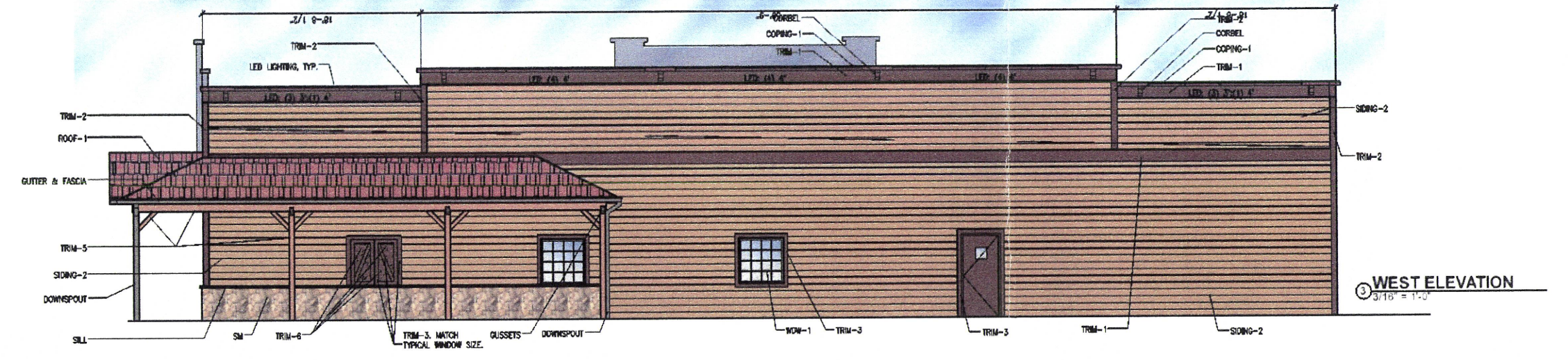


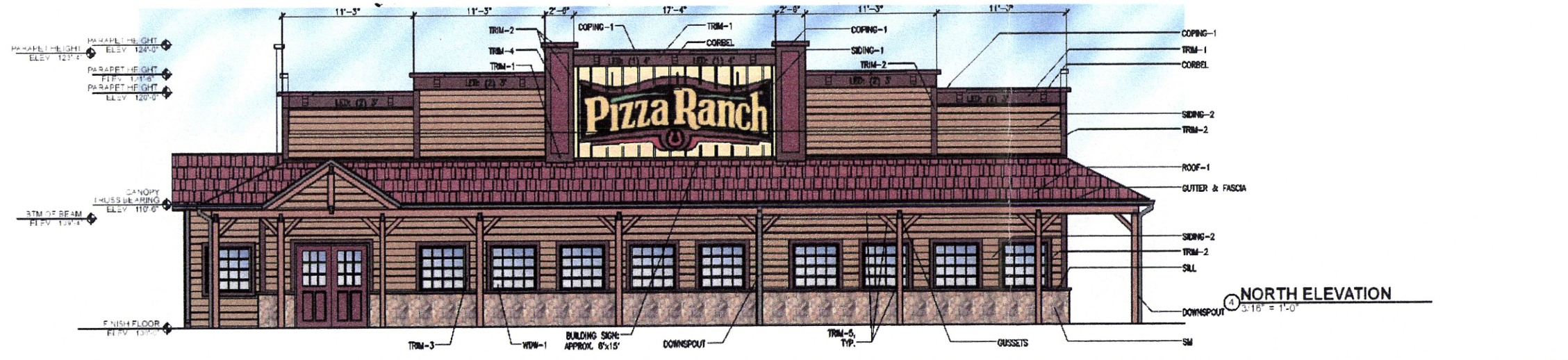
1 EAST ELEVATION
3/16" = 1'-0"



2 SOUTH ELEVATION
3/16" = 1'-0"



3 WEST ELEVATION
3/16" = 1'-0"



4 NORTH ELEVATION
3/16" = 1'-0"

GENERAL EXT. ELEVATION NOTES

1. REFER TO ADDITIONAL NOTES AND REQUIREMENTS ON ALL OTHER DOCUMENTS AND OTHER DISCIPLINES DOCUMENTS.
2. ALL HORIZONTAL TRANSITIONS BETWEEN DIFFERENT MATERIALS SHALL BE FLASHED CONTINUOUS FROM UP BEHIND TO UNDER UPPER MATERIAL AND EXTEND OVER TO EXTERIOR FACE OF LOWER MATERIAL.
3. ANY RETURNS OR BLIND ELEVATIONS NOT SHOWN SHALL BE SIMILAR IN MATERIAL AND MAKEUP TO ADJACENT CONDITIONS OR OTHER SIMILAR CONDITIONS.
4. INSTALL VERTICAL EXPANSION JOINT MINIMAL AT COLUMN/GRID LINES AND AT THE HEAD OF DOOR JAMBS/OPENINGS OR AS OTHERWISE NOTED OR WHERE REQUIRED PER STANDARD MATERIAL PRACTICE TO REDUCE STRESS CRACKING. NO CONTROL JOINT/EXPANSION JOINT AT MAIN STRUCTURAL BEARING, KEEP AWAY 2'-6" MIN.
5. CAULK & SEAL ALL TRANSITION-CONTROL-EXPANSION AT ALL EXTERIOR MATERIALS.
6. INSULATE AND SEAL TO ENSURE ADEQUATE AIR INFILTRATION BARRIER AROUND ALL EXTERIOR PENETRATIONS TO PREVENT WATER AND SPRINKLER PIPE FREEZING.
7. ADDRESS SHALL BE PROVIDED ON STREET SIDE OF BUILDING AND ON MONUMENT SIGN. NUMBERS A MINIMUM 5 INCH CONTRASTING COLOR NUMBERS WITH MINIMUM 1/2" STROKE.
8. IF ANY SIGNAGE OR SIGN BASE IS SHOWN IT IS FOR REFERENCE ONLY, FINAL DESIGNS AND/OR ALLOWANCES SHALL BE DETERMINED WITH APPROVED SIGNAGE PERMIT(S).
9. ALL EXTERIOR FLASHING FINISH TO BE BERRIDGE DARK BRONZE OR EQUAL, UNLESS NOTED OTHERWISE.
10. BACKSIDE OF ANY AND ALL PARAPETS VISIBLE FROM PUBLIC VIEW TO BE COVERED W/ SIDING-3 FROM TOP OF PARAPETS TO ELEVATION 120'-0".
11. LED LIGHTING PROVIDED BY OWNER, INSTALLED BY GENERAL CONTRACTOR. SEE MEP FOR LIGHTING SPECIFICATIONS.

EXTERIOR MATERIAL LEGEND

MAT LABEL	MATERIAL DESCRIPTION MATERIAL SPECIFICATION/NOTATION
COPING-1	METAL COPING, PRE-FINISHED (24 GA.) BERRIDGE COLORIAL RED
TRIM-1	5/4x12" FIBER CEMENT BOARD PAINT #12
TRIM-2	5/4x8" FIBER CEMENT BOARD PAINT #12
TRIM-3	5/4x4" FIBER CEMENT BOARD PAINT #12
TRIM-4	FIBER CEMENT PANEL PAINT #11
TRIM-5	ROUGH SAWN CEDAR WRAPPED STRUCTURE STAIN: ST-2
TRIM-6	FIBER CEMENT PANEL PAINT #12
CORBEL	5" x 10" BRACKET, FYPON CORBK10 PAINT #11
SM	SIMULATED MASONRY, DUTCH QUALITY STONE PENNSYLVANIA FIELDSTONE, NATURAL MORTAR
SILL	STONE SILL, DUTCH QUALITY STONE 2" x 3" x 23 1/2" CRAY, NATURAL MORTAR
SIDING-1	SIDING, WOOD TEXTURE, 4"x8" SIDING W/ 3/4" x 2 5/8" FIBER CEMENT BATTENS, PAINT #13
SIDING-2	FACTORY-PREFINISHED SIDING: 7" EXPOSURE, WOOD TEXTURE LP SMARTSIDE, DIAMOND NOTE PREFINISHED: MAPLE
SIDING-3	SIDING, WOOD TEXTURE, 4"x8" SIDING W/ PAINT #12
ROOF-1	ASPHALT ROOF SHINGLE CERTIFIED LANDMARK COTTAGE RED SHINGLE
GUTTER	PREFINISHED GUTTER AND DOWNPOUT BERRIDGE DARK BRONZE OR EQUAL
FASCIA	PREFINISHED BREAK METAL BERRIDGE DARK BRONZE OR EQUAL
WOW-1	FIXED WINDOW, ALUMINUM-CLAD WOOD
GUSSETS	BLACK STEEL GUSSETS W/ GALV. BOLTS, NUTS & WASHERS, TYP. 4"x5"x3/8"
P-11	SHERWIN WILLIAMS SW7592: CRABBY APPLE DIAMOND VOGEL 65501: RANCH RED
P-12	SHERWIN WILLIAMS SW6089: FRENCH ROAST DIAMOND VOGEL 65501: TUDOR BROWN
P-13	SHERWIN WILLIAMS SW7679: GOLDEN GATE DIAMOND VOGEL 6529: BALSAM BROWN

simonson
simonson & associates architects llc
1777 ledgerhill avenue suite 117 des moines ia 50399
ph 515 440 5646 www.simonsona.com



Pizza Ranch
Stumer Rd. & 5th St.
RAPID CITY, SOUTH DAKOTA

DESIGNER	11-03-2012
CHECKED	12-14-2012
ISSUED FOR	Site Plan Approval

Job No: 12086
Proj Mgr: TKW
Sheet Title: EXTERIOR ELEVATIONS
Sheet No: