

Rapid City Planning & Development Services

RECEIVED

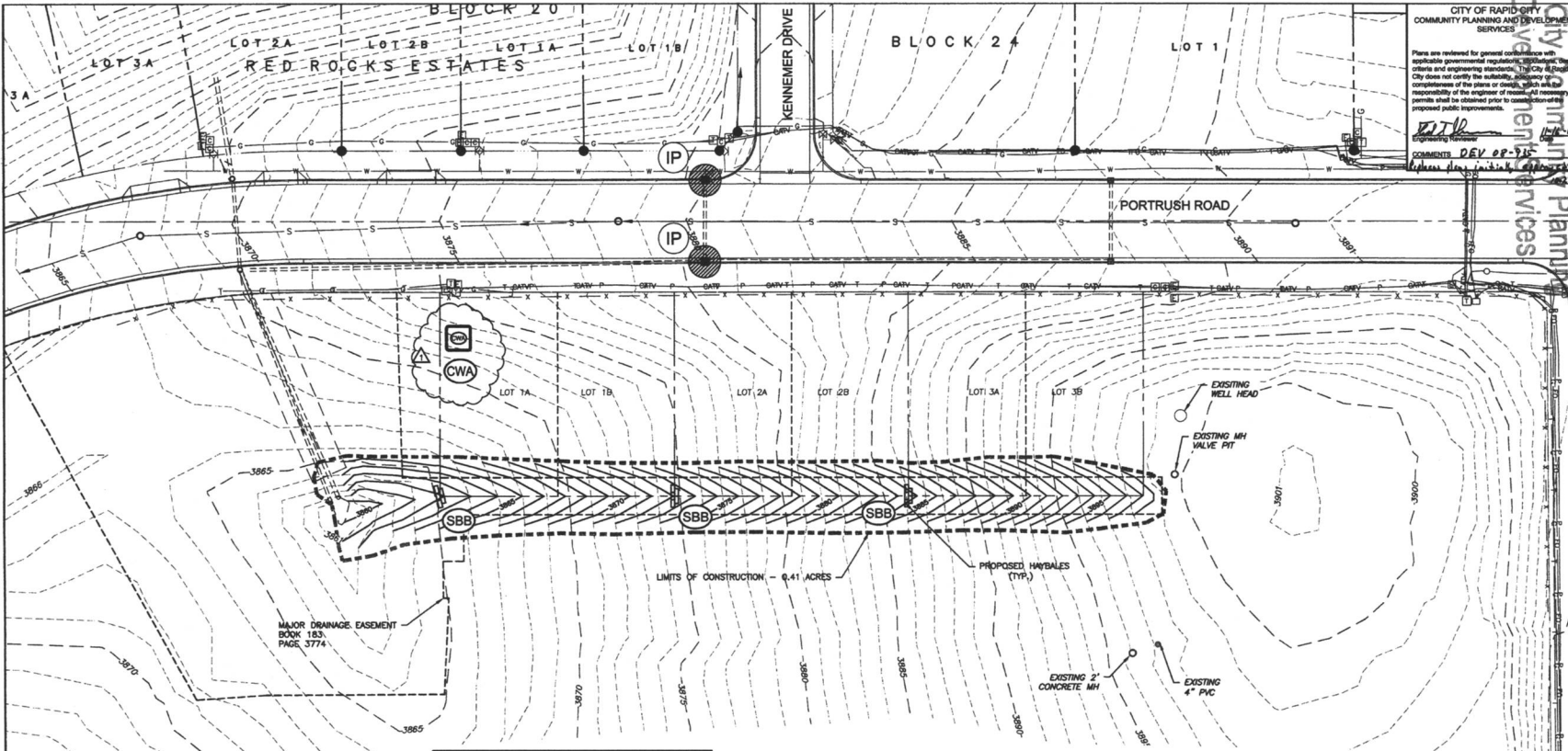
Submitted: JAN 25 2013
 Project: CT-15-12 CITY COMMENTS

Internal Job No: 07-0488
 Designed by: GB
 Drawn by: KTI/AM
 Surveyed by: N/A
 Survey Date: N/A

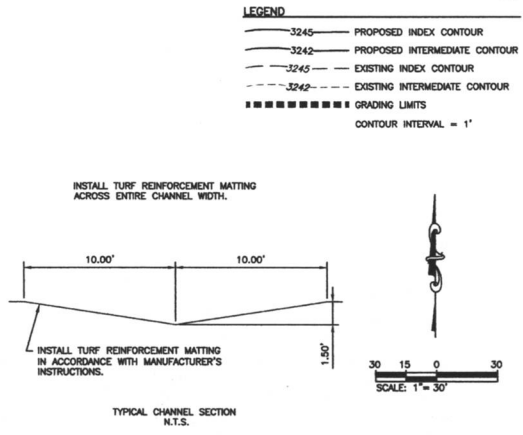
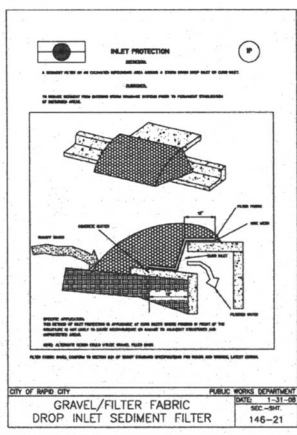
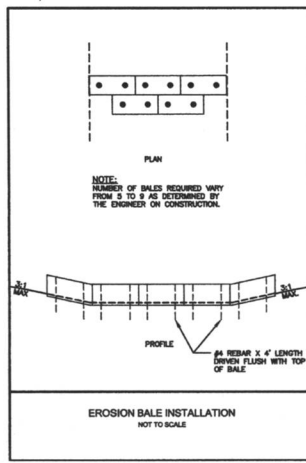
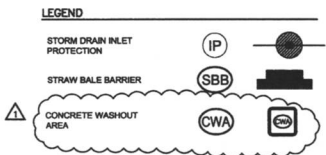


DREAM DESIGN INTERNATIONAL, INC.
 ENGINEERING, LANDSCAPE ARCHITECTURE, LAND PLANNING, CONSTRUCTION ADMINISTRATION
 532 KANSAS CITY STREET, SUITE 200, RAPID CITY, SD 57701
 PHONE: (605) 348-0338 FAX: (605) 348-0345 WWW.DREAMDESIGNING.COM

Project Name: GRADING PLAN & EROSION CONTROL PLAN
 Sheet Number: 2 of 4



CITY OF RAPID CITY
 COMMUNITY PLANNING AND DEVELOPMENT SERVICES
 Plans are reviewed for general conformance with applicable governmental regulations, including design criteria and engineering standards. The City of Rapid City does not certify the reliability, accuracy or completeness of the plans or drawings, which are the responsibility of the engineer of record. Necessary permits shall be obtained prior to construction of proposed public improvements.
 Engineering Review: [Signature]
 COMMENTS: DEV 09-15
 [Signature]



\\sdc\shared\cadd\project\13PD003\13PD003.dwg, 11/08/2012 10:53:39 AM, 11