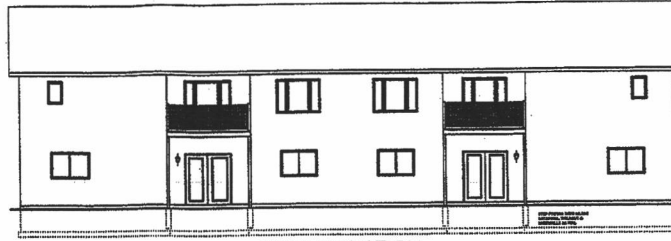


# RECEIVED

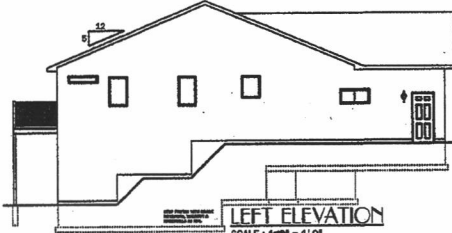
JAN 28 2013

Rapid City Community Planning  
& Development Services

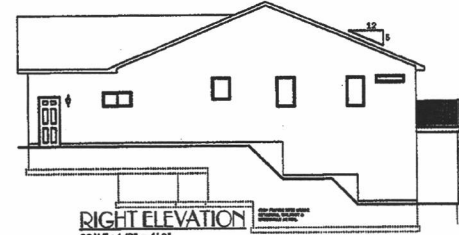
MARK



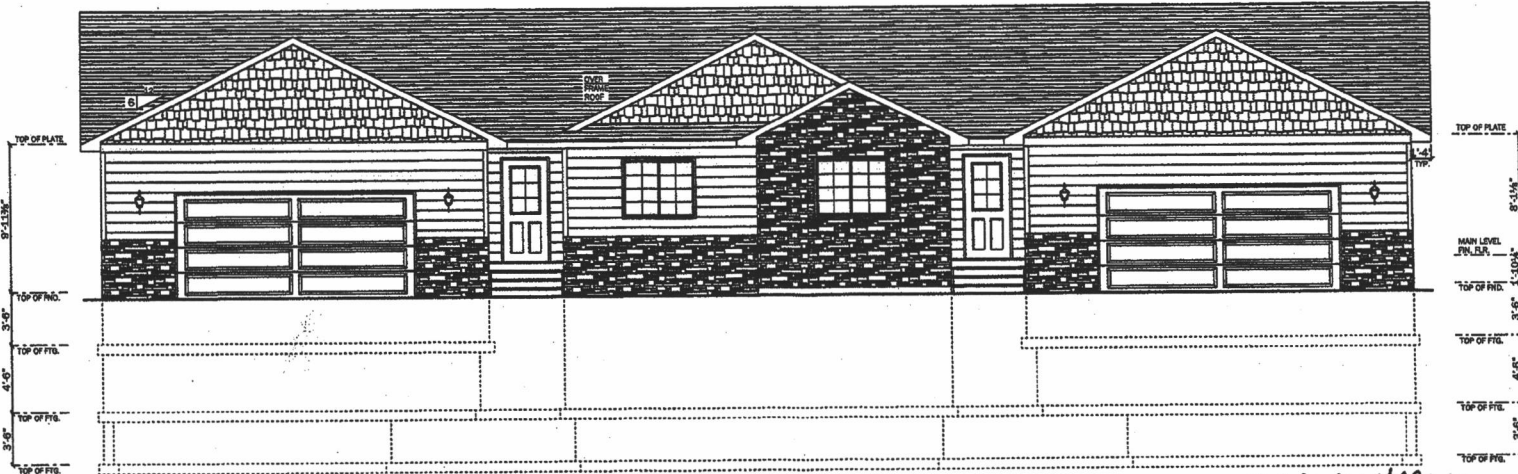
REAR ELEVATION  
SCALE: 1/8" = 1'-0"



LEFT ELEVATION  
SCALE: 1/8" = 1'-0"



RIGHT ELEVATION  
SCALE: 1/8" = 1'-0"



FRONT ELEVATION  
SCALE: 1/8" = 1'-0"

NESSLAND LOTS 1A 1B RED ROCK SHADOWS  
1-10-13 1/8"

Drawn For: NESLAND CONSTRUCTION  
Contractor: MIKE NESLAND  
Drawn By: AND BUBETTI  
Date: 01/09/13  
Category: LOTS 1A & 1B BULK 1 RED ROCK SHAD

UBC  
PRO-Build  
Rapid City, S.D.  
Phone (605) 343-1115  
Fax (605) 388-8735

PRO-Build

Customers Signature \_\_\_\_\_ Date \_\_\_\_\_

**IMPORTANT**

These drawings may not meet applicable building codes. These drawings may need to be adapted to your specific project. Check with local building officials about a building permit.

ELEVATIONS  
Date: 01/09/13  
Purchase Date: 06/06/13

These general drawings have been prepared using information provided by the customer. The drawings are not a substitute for a professional engineer's or architect's services. The drawings are not a substitute for a professional engineer's or architect's services. The drawings are not a substitute for a professional engineer's or architect's services. The drawings are not a substitute for a professional engineer's or architect's services.

STATE OF SOUTH DAKOTA DOES NOT REQUIRE RESIDENTIAL HOME PLANS TO BE DESIGNED OR APPROVED BY A LICENSED ARCHITECT. THEREFORE, THIS HOME PLAN HAS NOT BEEN DESIGNED OR APPROVED BY A LICENSED ARCHITECT. ANY HOME NOT DESIGNED OR APPROVED BY A LICENSED ARCHITECT MAY BE SUBJECT TO A LICENSED ARCHITECT'S APPROVAL. PRIOR TO CONSTRUCTION, IT IS ADVISED THAT A LICENSED ARCHITECT APPROVAL MAY BE REQUIRED FOR THE APPLICABILITY OF THE PLAN FOR THE PARTICULAR LOCALITY. VERIFYING THAT PARTICULAR AREA, A PLAN FOR A RESIDENTIAL STRUCTURE MAY REQUIRE TO HAVE A LICENSED ARCHITECT'S APPROVAL. APPROVING WORK WHERE THIS HOME IS TO BE BUILT AND THE