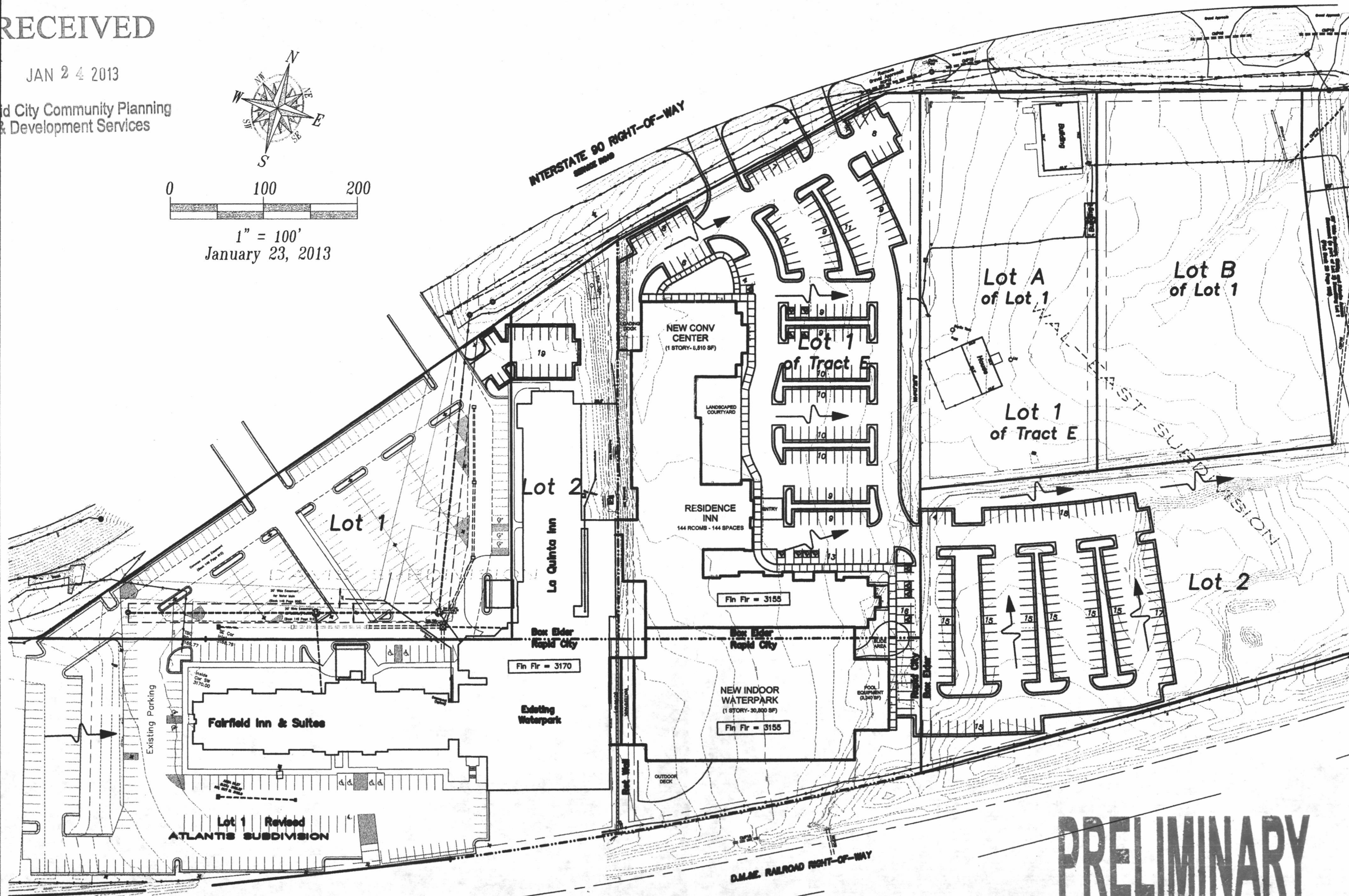
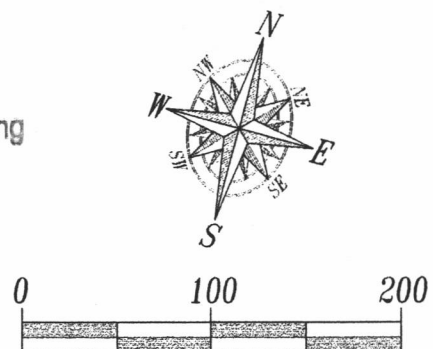


RECEIVED

JAN 24 2013

Rapid City Community Planning
& Development Services

Fisk Land Surveying
& Consulting, Inc.
1022 Main Street (P.O. Box 8154)
Rapid City, South Dakota 57709
(605) 348-1538
(605) 341-1112 (fx)

Schematic Grading Plan
ISIS Hospitality - Black Hills Waterpark Resort
Lot 1 Revised of Atlantis Subdivision and
and Lots 1 and 2 of Davis Subdivision
Rapid City & Box Elder,
Pennington County, South Dakota

Surveyed by:

Date
1/23/13

Drawn by:

Checked by:

Revisions

Schematic
Grading Plan1
of
1Project No.
13-01-01