

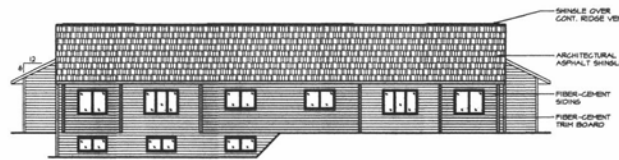
RECEIVED

DEC 31 2012

Rapid City Community Planning
& Development Services



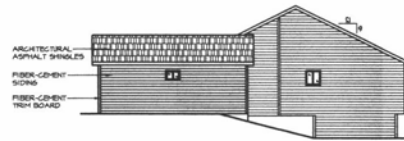
FRONT ELEVATION
SCALE: 1/8" = 1'-0"



REAR ELEVATION
SCALE: 1/8" = 1'-0"



SIDE ELEVATION
SCALE: 1/8" = 1'-0"



SIDE ELEVATION
SCALE: 1/8" = 1'-0"

Village
at
Skyline
Pines

Rapid City, SD

PROJ. MGR.
PRO GROUP
INCORPORATED
"Your Total
Development Solution"

- ◆ Vision
- ◆ Performance
- ◆ Experience

400 South 3rd Avenue, Suite 300
Rapid City, South Dakota 57104
Phone: 605.336.8187
Fax: 605.336.1988
Web: www.ProGroupInc.net

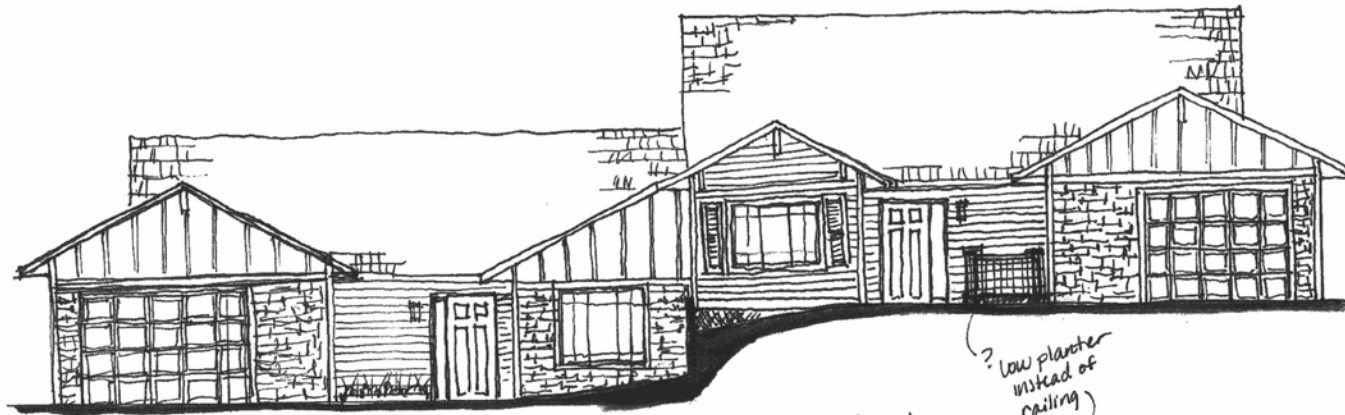
THIS IS A COPYRIGHT 2008
DOCUMENT. THE ORIGINAL
DRAWING SHALL NOT BE REPRODUCED,
COPIED, OR USED FOR ANY
PURPOSE WITHOUT THE WRITTEN
PERMISSION OF THE OWNER.
THESE DRAWINGS ARE THE PROPERTY
OF PRO GROUP INC. AND SHALL NOT
BE REPRODUCED OR TRANSMITTED
IN ANY FORM OR BY ANY MEANS,
ELECTRONIC OR MECHANICAL,
INCLUDING PHOTOCOPYING,
RECORDING, OR BY ANY INFORMATION
SYSTEMS WITHOUT THE WRITTEN
PERMISSION OF PRO GROUP INC.

REVISIONS:	
NO.	DATE

SHEET NAME:
Twin Home
Exterior Elevations

PROJECT NO.
W06042
DRAWN BY:
NW
CHECKED BY:
WLP
DATE:
12.31.2012
SHEET:

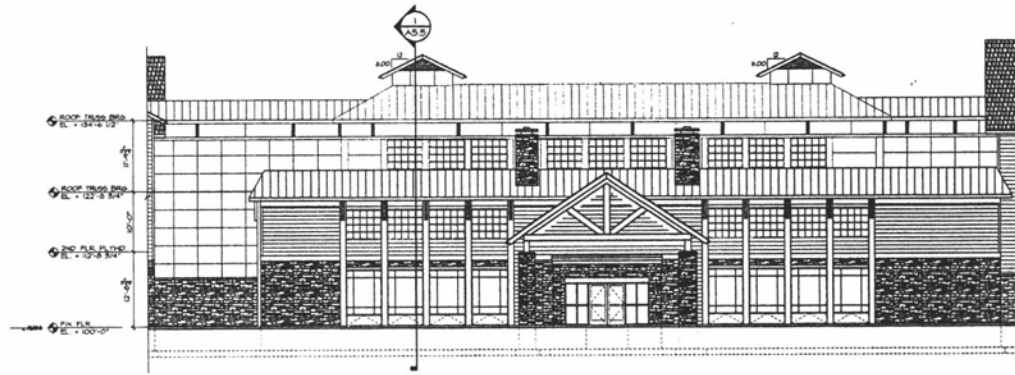
A9



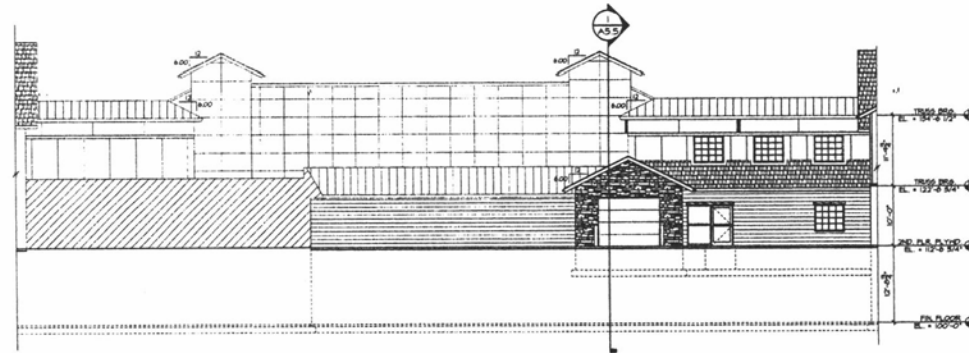
ELEVATION 1A

FRONT ELEVATION
6 FOOT OFFSET

? low planter
instead of
railing



1 ENLARGED NORTH EXTERIOR ELEVATION - CORE D
SCALE: 1/8" = 1'-0"



2 ENLARGED SOUTH EXTERIOR ELEVATION - CORE D
SCALE: 1/8" = 1'-0"

- GENERAL NOTES:**
- A. SEE FLOOR PLANS FOR SECTION AND BUILDING CUT LOCATIONS.
 - B. SEE MECHANICAL FOR ALL PENETRATIONS.
 - C. VERIFY ALL COLORS WITH OWNER.
 - D. ALL FIBER-CEMENT PRODUCTS TO BE INSTALLED PER MANUFACTURERS' WARRANTY DETAILS.
 - E. ALL MANUFACTURED STONE VENER PRODUCTS TO BE INSTALLED PER MANUFACTURERS' WARRANTY DETAILS.
 - F. ALL HALL CAPS, LOUVERS, VENTS AND DOWNSPUTS TO BE PAINTED TO MATCH ADJACENT COLORS UNLESS OTHERWISE NOTED. MUST BE AUTO BODY PAINTED. NO ON-SITE PAINTING PERMITTED.
 - G. INSTALL A PLAT MANUFACTURED STONE AT ALL BUILDING MOUNTED LIGHT FIXTURES. SEE ELECTRICAL PLANS FOR LOCATIONS.
- ROOFING NOTES:**
1. CLASS 40 YEAR FIBERGLASS SHINGLES.
 2. CONTINUOUS SHINGLE OVER RIDGE VENT. SEE ROOF PLAN FOR VENTING LOCATIONS.
 3. SEAMLESS GUTTER & DOWNSPOUT SYSTEM. AUTO BODY PAINTED. NO ON-SITE PAINTING PERMITTED.
 4. PRE-FINISHED FIBER-CEMENT FASCIA BOARD. INSTALLER TO CAULK ALL NAIL HOLES.
 5. PRE-FINISHED HORIZONTAL FIBER-CEMENT SOFFIT. INSTALLER TO CAULK ALL EXPOSED NAIL HOLES.
 6. PRE-FINISHED FIBER-CEMENT TRIM BOARD. INSTALLER TO CAULK ALL NAIL HOLES.
 7. MANUFACTURED STONE VENER SYSTEM.
 8. DECORATIVE SHUTTER. PAINT TO MATCH ADJACENT MANUFACTURED STONE VENER.
 9. WALL CAPS. SEE MECHANICAL PLANS. PAINT BY MECHANICAL SUBCONTRACTOR.
 10. LOUVER. SEE MECHANICAL PLANS. PAINT BY MECHANICAL SUBCONTRACTOR.
 11. VENT. SEE MECHANICAL PLANS. PAINT BY MECHANICAL SUBCONTRACTOR.
 12. PRE-FINISHED BEAMED METAL ROOF WITH ICE BREAKERS.
 13. DASHED LINE INDICATES MECHANICAL EQUIPMENT SCREEN WALL.
 14. PRE-FINISHED VERTICAL FIBER-CEMENT SOFFIT. INSTALLER TO CAULK ALL EXPOSED NAIL HOLES.
 15. PRE-FINISHED VERTICAL FIBER-CEMENT SOFFIT. INSTALLER TO CAULK ALL EXPOSED NAIL HOLES.
 16. 3x12 TRIM BOARD.
 17. MANUFACTURED STONE LITEL.
 18. HEAVY TRIMMER LITEL.

VILLAGE AT SKYLINE PINES
ASSISTED LIVING CENTER
RAPID CITY, SOUTH DAKOTA

6613N LARBI
661315825 Pkg. Rev. 1/16
661315825 Pkg. Rev. 1/16
661315825 Pkg. Rev. 1/16
661315825 Pkg. Rev. 1/16

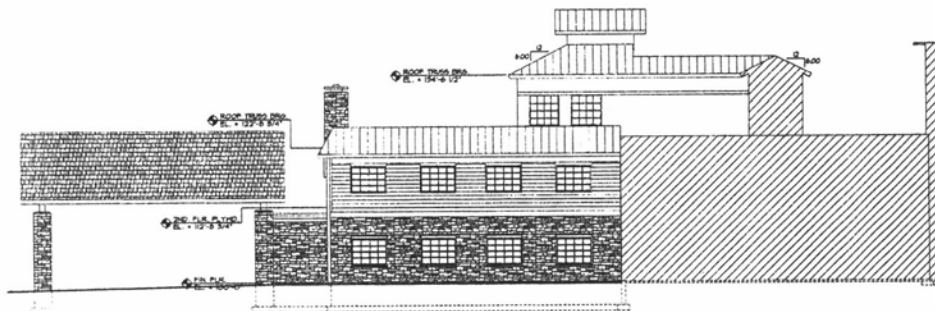
Enlarged Exterior Elevations
ORSArchitects
ARCHITECTURE • PLANNING • INTERIOR DESIGN

DATE	1/16/20
PROJECT NO.	661315825
DRAWN BY	JK
CHECKED BY	JK
REVISION	
DATE	

A4.5



ENLARGED EAST EXTERIOR ELEVATION - CORE D
SCALE: 1/4" = 1'-0"



ENLARGED WEST EXTERIOR ELEVATION - CORE D
SCALE: 1/4" = 1'-0"

GENERAL NOTES:

- A. SEE FLOOR PLANS FOR SECTION AND BUILDING LOT LOCATIONS.
- B. SEE MECHANICAL FOR ALL PENETRATIONS.
- C. VERIFY ALL COLORS WITH OWNER.
- D. ALL FIBER-CEMENT PRODUCTS TO BE INSTALLED PER MANUFACTURERS' WARRANTY DETAILS.
- E. ALL MANUFACTURED STONE VENEER PRODUCTS TO BE INSTALLED PER MANUFACTURERS' WARRANTY DETAILS.
- F. ALL HALL CAPS, LOUVERS, VENTS AND DOWNPOUTS TO BE PAINTED TO MATCH ADJACENT COLOR UNLESS OTHERWISE NOTED. MUST BE AUTO BODY PAINTED. NO ON-SITE PAINTING PERMITTED.
- G. INSTALL A PLAT MANUFACTURED STONE AT ALL BUILDING MOUNTED LIGHT FUTURES. SEE ELECTRICAL PLANS FOR LOCATIONS.

VENTED NOTES:

1. CLASS 'A' 40 YEAR FIBERGLASS SHINGLES.
2. CONTINUOUS SHINGLE OVER ROOF VENT. SEE ROOF PLAN FOR VENTING LOCATIONS.
3. SEAMLESS GUTTER & DOWNSPOUT SYSTEM. AUTO BODY PAINTED. NO ON-SITE PAINTING PERMITTED.
4. PRE-FINISHED FIBER-CEMENT FASCIA BOARD. INSTALLER TO CALL ALL NAIL HOLES.
5. PRE-FINISHED BY HORIZ. FIBER-CEMENT SIDING. INSTALLER TO CALL ALL EXPOSED NAIL HOLES.
6. PRE-FINISHED FIBER-CEMENT TRIM BOARD. INSTALLER TO CALL ALL NAIL HOLES.
7. MANUFACTURED STONE VENEER SYSTEM.
8. DECORATIVE SHUTTER. PAINT TO MATCH ADJACENT MANUFACTURED STONE VENEER.
9. HALL CAP. SEE MECHANICAL PLANS. PAINT BY MECHANICAL SUBCONTRACTOR.
10. LOUVER. SEE MECHANICAL PLANS. PAINT BY MECHANICAL SUBCONTRACTOR.
11. VENT. SEE MECHANICAL PLANS. PAINT BY MECHANICAL SUBCONTRACTOR.
12. PRE-FINISHED BEAVED METAL ROOF WITH ICE BREAKERS.
13. DASHED LINE INDICATES MECHANICAL EQUIPMENT SCREEN PANEL.
14. PRE-FINISHED BY VERTICAL FIBER-CEMENT SIDING. INSTALLER TO CALL ALL EXPOSED NAIL HOLES.
15. PRE-FINISHED 4" VERTICAL FIBER-CEMENT SIDING. INSTALLER TO CALL ALL EXPOSED NAIL HOLES.
16. 3/2" TRIM BOARD.
17. MANUFACTURED STONE Lintel.
18. HEAVY TRIMMER Lintel.

VILLAGE AT SKYLINE PINES
ASSISTED LIVING CENTER
RAPID CITY, SOUTH DAKOTA

460.334.8899
460.334.8899
460.334.8899
460.334.8899
460.334.8899

Enlarged Exterior Elevations
ORS Architects
ARCHITECTURE • PLANNING • INTERIOR DESIGN

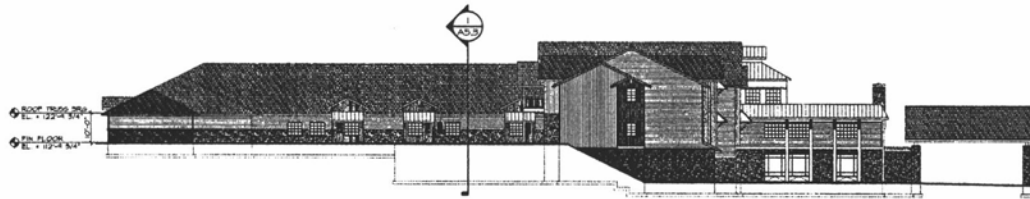
DATE	REVISION



NORTH ELEVATION
SCALE 1/4" = 1'-0"



SOUTH ELEVATION
SCALE 1/4" = 1'-0"



EAST ELEVATION
SCALE 1/4" = 1'-0"



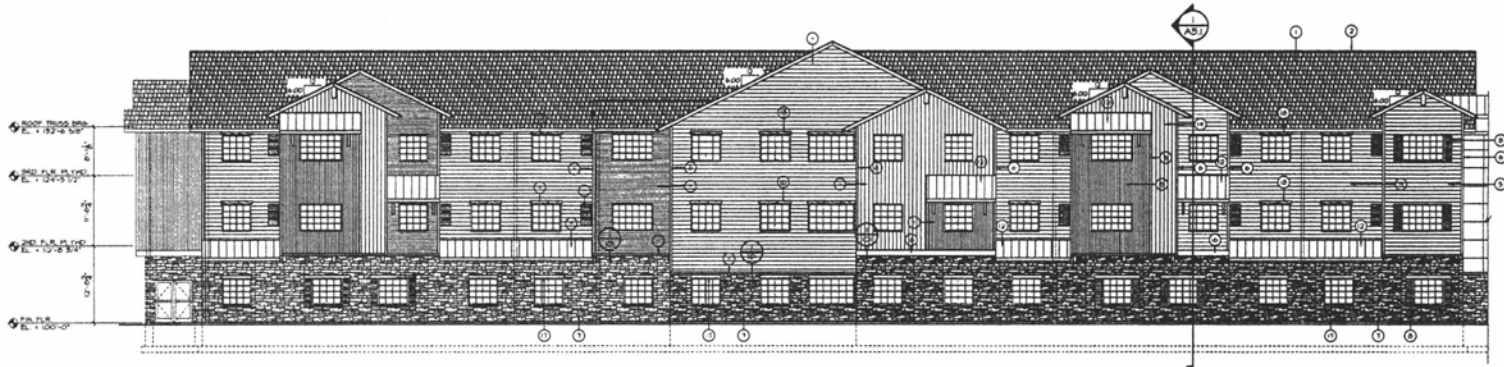
WEST ELEVATION
SCALE 1/4" = 1'-0"

VILLAGE AT SKYLINE PINES
ASSISTED LIVING CENTER
RAPID CITY, SOUTH DAKOTA

RS Architects
ARCHITECTURE • PLANNING • INTERIOR DESIGN

601 334 4878
601 334 4552 Fax
400 E. 3rd Ave., P.O. Box 1068
Rapid City, SD 57702
www.rsarchitects.com

DATE	10/10/13
PROJECT	Village at Skyline Pines
OWNER	...
DESIGNED BY	...
REVISED	...
DATE	...



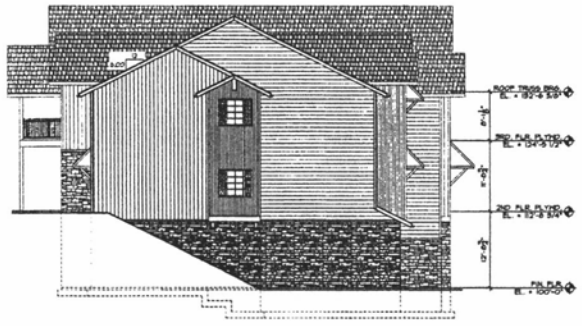
1 ENLARGED NORTH EXTERIOR ELEVATION - KING A
SCALE: 1/8" = 1'-0"

- GENERAL NOTES:**
- SEE FLOOR PLANS FOR SECTION AND BUILDING CUT LOCATIONS.
 - SEE MECHANICAL FOR ALL PENETRATIONS.
 - VERIFY ALL COLORS WITH OWNER.
 - ALL FIBER-CEMENT PRODUCTS TO BE INSTALLED PER MANUFACTURER'S INSTALLATION DETAILS.
 - ALL MANUFACTURED STONE VENEER PRODUCTS TO BE INSTALLED PER MANUFACTURER'S INSTALLATION DETAILS.
 - ALL HULL CAPS, LOUVERS, VENTS AND DOWNSPOUTS TO BE PAINTED TO MATCH ADJACENT COLOR UNLESS OTHERWISE NOTED. MUST BE AUTO BODY PAINTED. NO CHIEF PAINTING PERMITTED.
 - INSTALL A FLAT MANUFACTURED STONE AT ALL BUILDING MOUNTED LIGHT FIXTURES. SEE ELECTRICAL PLANS FOR LOCATIONS.

- KEYED NOTES:**
- CLASS 'A' 40 YEAR FIBERGLASS SHINGLES.
 - CONTRACTOR BRUSH OVER RIDGE VENT. SEE ROOF PLAN FOR VENTING LOCATIONS.
 - SEAMLESS BUTTER & DOWNSPOUT STAINLESS AUTO BODY PAINTED. NO ON-SITE PAINTING PERMITTED.
 - PRE-FINISHED FIBER-CEMENT FASCIA BOARD. INSTALLER TO CAULK ALL NAIL HOLES.
 - PRE-FINISHED 4" HORIZ. FIBER-CEMENT SIDING. INSTALLER TO CAULK ALL EXPOSED NAIL HOLES.
 - PRE-FINISHED FIBER-CEMENT TRIM BOARD. INSTALLER TO CAULK ALL NAIL HOLES.
 - MANUFACTURED STONE VENEER SYSTEM.
 - DECORATIVE BUTTER PAINT TO MATCH ADJACENT MANUFACTURED STONE VENEER.
 - HULL CAP. SEE MECHANICAL PLANS. PAINT BY MECHANICAL SUBCONTRACTOR.
 - LOUVER. SEE MECHANICAL PLANS. PAINT BY MECHANICAL SUBCONTRACTOR.
 - VENT. SEE MECHANICAL PLANS. PAINT BY MECHANICAL SUBCONTRACTOR.
 - PRE-FINISHED BEADED METAL ROOF WITH ICE BRACKETS.
 - DASHED LINE INDICATES MECHANICAL EQUIPMENT SCREEN HALL.
 - PRE-FINISHED BY VERTICAL FIBER-CEMENT SIDING. INSTALLER TO CAULK ALL EXPOSED NAIL HOLES.
 - PRE-FINISHED 4" VERTICAL FIBER-CEMENT SIDING. INSTALLER TO CAULK ALL EXPOSED NAIL HOLES.
 - 2x12 TRIM BOARD.
 - MANUFACTURED STONE LINTEL.
 - HEAVY TRIMMER LINTEL.



2 ENLARGED SOUTH EXTERIOR ELEVATION - KING A
SCALE: 1/8" = 1'-0"



3 ENLARGED EAST EXTERIOR ELEVATION - KING A
SCALE: 1/8" = 1'-0"

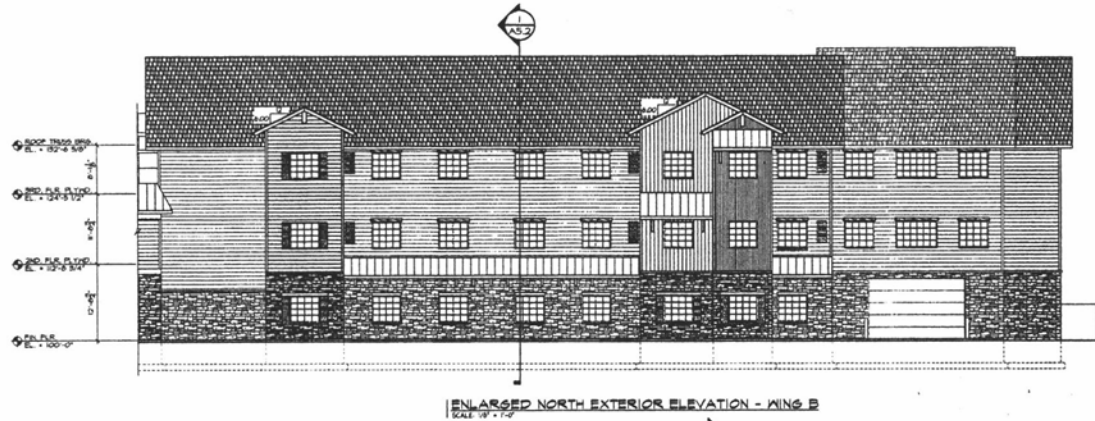
VILLAGE AT SKYLINE PINES
ASSISTED LIVING CENTER
RAPID CITY, SOUTH DAKOTA

Enlarged Exterior Elevations

RSArchitects
ARCHITECTURE • PLANNING • INTERIOR DESIGN

605.334.8871
605.334.8894 Fax
605.334.8895
1000 East 10th Street, Suite 100
Rapid City, SD 57701-1508
www.rsarchitects.com

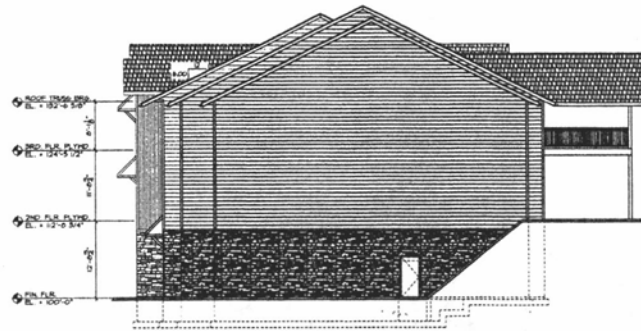
DATE	PROJECT NO.	SCALE
DRAWN BY	CHECKED BY	DATE
DESIGNED BY	APPROVED BY	DATE
CAD FILE		



1 ENLARGED NORTH EXTERIOR ELEVATION - KING B
SCALE: 1/4" = 1'-0"



2 ENLARGED SOUTH EXTERIOR ELEVATION - KING B
SCALE: 1/4" = 1'-0"



3 ENLARGED WEST EXTERIOR ELEVATION - KING B
SCALE: 1/4" = 1'-0"

- GENERAL NOTES:**
- A. SEE FLOOR PLANS FOR SECTION AND BUILDING CUT LOCATIONS.
 - B. SEE MECHANICAL FOR ALL PENETRATIONS.
 - C. VERIFY ALL COLORS WITH OWNER.
 - D. ALL FIBER-CEMENT PRODUCTS TO BE INSTALLED PER MANUFACTURER'S MANUFACTURING DETAILS.
 - E. ALL MANUFACTURED STONE VENEER PRODUCTS TO BE INSTALLED PER MANUFACTURER'S MANUFACTURING DETAILS.
 - F. ALL HALL CAPS, LOUVERS, VENTS AND DOWNSPOUTS TO BE PAINTED TO MATCH ADJACENT COLOR UNLESS OTHERWISE NOTED. NEAR BY AUTO BODY PAINTED, NO ON-SITE PAINTING PERMITTED.
 - G. INSTALL A PLAT MANUFACTURED STONE AT ALL BUILDING POINTS LIGHT FIXTURES. SEE ELECTRICAL PLANS FOR LOCATIONS.
- SEVERED NOTES:**
1. GLASS 30 YEAR FIBERGLASS SHINKLES.
 2. CONTINUOUS SHINGLE OVER RIDGE VENT. SEE ROOF PLAN FOR VENTING LOCATIONS.
 3. SEAMLESS GUTTER & DOWNSPOUT SYSTEM. AUTO BODY PAINTED, NO ON-SITE PAINTING PERMITTED.
 4. PRE-FINISHED FIBER-CEMENT PARGA BOARD. INSTALLER TO CAULK ALL NAIL HOLES.
 5. PRE-FINISHED 8" HOLE FIBER-CEMENT SODS. INSTALLER TO CAULK ALL EXPOSED NAIL HOLES.
 6. PRE-FINISHED FIBER-CEMENT TRIM BOARD. INSTALLER TO CAULK ALL NAIL HOLES.
 7. MANUFACTURED STONE VENEER SYSTEM.
 8. DECORATIVE SHITTER PAINT TO MATCH ADJACENT MANUFACTURED STONE VENEER.
 9. HALL CAP. SEE MECHANICAL PLANS. PAINT BY MECHANICAL SUBCONTRACTOR.
 10. LOUVER. SEE MECHANICAL PLANS. PAINT BY MECHANICAL SUBCONTRACTOR.
 11. VENT. SEE MECHANICAL PLANS. PAINT BY MECHANICAL SUBCONTRACTOR.
 12. PRE-FINISHED SEAMED METAL ROOF WITH ICE BREAKERS.
 13. DASHED LINE INDICATES MECHANICAL EQUIPMENT SCREEN WALL.
 14. PRE-FINISHED 8" VERTICAL FIBER-CEMENT SODS. INSTALLER TO CAULK ALL EXPOSED NAIL HOLES.
 15. PRE-FINISHED 4" VERTICAL FIBER-CEMENT SODS. INSTALLER TO CAULK ALL EXPOSED NAIL HOLES.
 16. 2X12 TRIM BOARD.
 17. MANUFACTURED STONE LINTEL.
 18. HEAVY TRIMBER LINTEL.

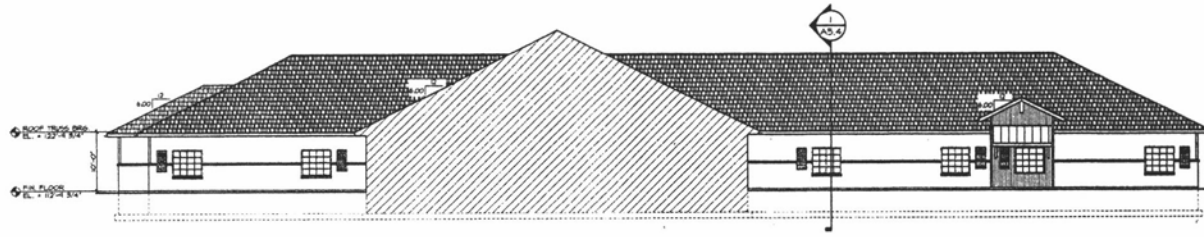
VILLAGE AT SKYLINE PINES
ASSISTED LIVING CENTER
RAPID CITY, SOUTH DAKOTA

Enlarged Exterior Elevations

4833 SHERBURN
9813 SHERBURN TRAIL
4851 S.W. 4th Ave., P.O. Box 1008
Rapid City, SD 57702
www.orsarchitects.com

ORSArchitects
ARCHITECTURE • PLANNING • INTERIOR DESIGN

DATE	PROJECT NO.	REVISION
DESIGNED BY		
CHECKED BY		
APPROVED BY		
CAD FILE		



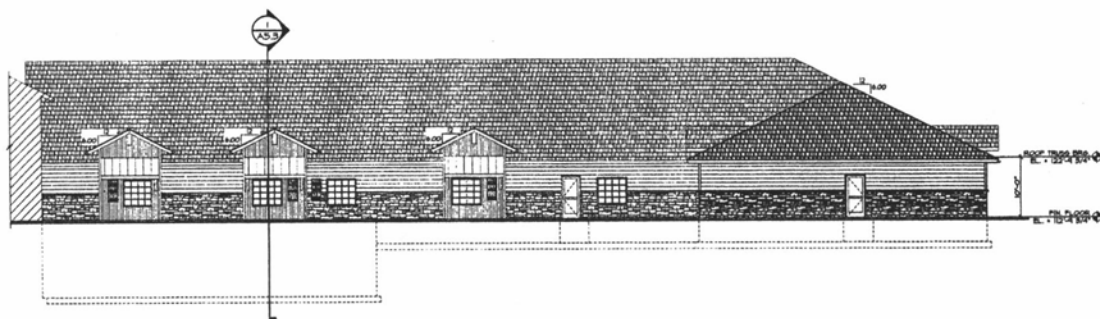
1 ENLARGED NORTH EXTERIOR ELEVATION - WING C
SCALE 1/8" = 1'-0"



2 ENLARGED SOUTH EXTERIOR ELEVATION - WING C
SCALE 1/8" = 1'-0"



3 ENLARGED EAST EXTERIOR ELEVATION - WING C
SCALE 1/8" = 1'-0"



4 ENLARGED WEST EXTERIOR ELEVATION - WING C
SCALE 1/8" = 1'-0"

- GENERAL NOTES:**
- A. SEE FLOOR PLANS FOR SECTION AND BUILDING FOOTPRINT LOCATIONS.
 - B. SEE MECHANICAL FOR ALL PENETRATIONS.
 - C. VERIFY ALL COLORS WITH OWNER.
 - D. ALL FIBER-CEMENT PRODUCTS TO BE INSTALLED PER MANUFACTURERS' INSTALLATION DETAILS.
 - E. ALL MANUFACTURED STONE VENEER PRODUCTS TO BE INSTALLED PER MANUFACTURERS' INSTALLATION DETAILS.
 - F. ALL HALL CAPS, LOUVERS, VENTS AND DOWNSPUTS TO BE PAINTED TO MATCH ADJACENT COLOR UNLESS OTHERWISE NOTED. MUST BE AUTO BODY PAINTED. NO ON-SITE PAINTING PERMITTED.
 - G. INSTALL A FLAT MANUFACTURED STONE AT ALL BUILDING MOUNTED LIGHT FIXTURES. SEE ELECTRICAL PLANS FOR LOCATIONS.
- KEYED NOTES:**
1. CLASS 'A' 40 YEAR FIBERGLASS SHINGLES.
 2. CONTINUOUS BRINNLE OVER RIDGE VENT. SEE ROOF PLAN FOR VENTING LOCATION.
 3. SEAMLESS GUTTER & DOWNSPOUT SYSTEM. AUTO BODY PAINTED. NO ON-SITE PAINTING PERMITTED.
 4. PRE-FINISHED FIBER-CEMENT FACIA BOARD. INSTALLER TO CALK ALL NAIL HOLES.
 5. PRE-FINISHED 6" HORIZ. FIBER-CEMENT SIDING. INSTALLER TO CALK ALL EXPOSED NAIL HOLES.
 6. PRE-FINISHED FIBER-CEMENT TRIM BOARD. INSTALLER TO CALK ALL NAIL HOLES.
 7. MANUFACTURED STONE VENEER SYSTEM.
 8. DECORATIVE BUTTER PAINT TO MATCH ADJACENT MANUFACTURED STONE VENEER.
 9. HALL CAP SEE MECHANICAL PLANS. PAINT BY MECHANICAL SUBCONTRACTOR.
 10. LOUVERS SEE MECHANICAL PLANS. PAINT BY MECHANICAL SUBCONTRACTOR.
 11. VENT SEE MECHANICAL PLANS. PAINT BY MECHANICAL SUBCONTRACTOR.
 12. PRE-FINISHED BEAMED METAL ROOF WITH ICE BREAKERS.
 13. DASHED LINE INDICATES MECHANICAL EQUIPMENT SCREEN WALL.
 14. PRE-FINISHED 6" VERTICAL FIBER-CEMENT SIDING. INSTALLER TO CALK ALL EXPOSED NAIL HOLES.
 15. PRE-FINISHED 4" VERTICAL FIBER-CEMENT SIDING. INSTALLER TO CALK ALL EXPOSED NAIL HOLES.
 16. 2x12 TRIM BOARD.
 17. MANUFACTURED STONE LINTEL.
 18. HEAVY TIMBER LINTEL.

VILLAGE AT SKYLINE PINES
ASSISTED LIVING CENTER
RAPID CITY, SOUTH DAKOTA

805.336.8801
605.336.8800 Fax
1000 S. Lincoln Ave., Suite 1104
Sioux Falls, SD 57104-1104
info@rsarchitects.com

Enlarged Exterior Elevations
RSArchitects
ARCHITECTURE • PLANNING • INTERIOR DESIGN

DATE	11/11/2024
PROJECT NO.	24-001
DESIGNED BY	RS
DRAWN BY	RS
CHECKED BY	RS
SCALE	AS SHOWN