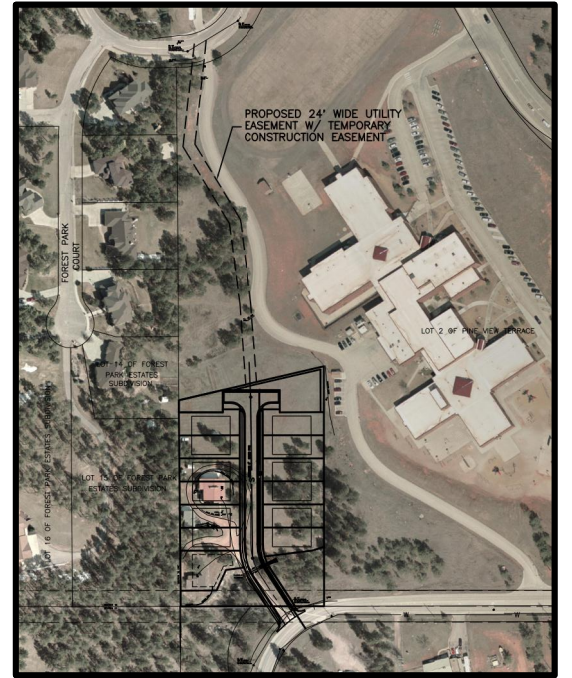
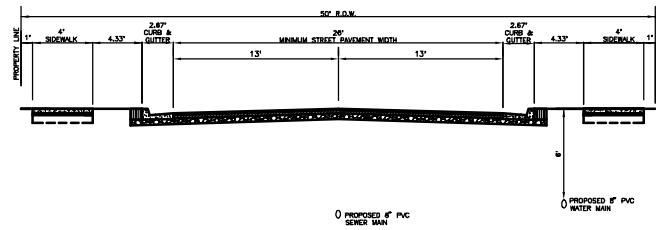


LOT 2 OF PINE VIEW TERRACE

DENSITY

TOTAL SITE: 136,807 Sq.Ft. = 3.210 Acs
 TOTAL UNITS: 12
 GROSS DENSITY: 9,986 Sq.Ft./A.
 TOTAL R.O.W.: 24,186 Sq.Ft. = 0.555 Acs
 DRAINAGE LOTS: 28,342 Sq.Ft. = 0.651 Acs
 OPEN SPACE: 3,286 Sq.Ft. = 0.075 Acs
 BUILDING ENVELOPE: 3,200 Sq.Ft.
 TYP. INDIVIDUAL LOT: 5,767 Sq.Ft.
 NET SITE: 62,404 Sq.Ft.
 NET DENSITY: 6,606 Sq.Ft./A.
 LOT COVERAGE: 68%

MINIMUM SIDEYARD SETBACK: 6.0'
 MINIMUM FRONTYARD SETBACK: 20.0'
 MINIMUM REARYARD SETBACK: 25.0'
 MINIMUM LOT WIDTH: 48.0'



SPERLICH Consulting, Inc.
 821 Columbia St. Suite 1000, Rock Hill, SC 29730
 TEL: (803) 724-4040 FAX: (803) 724-4048
 E-MAIL: info@sperrlichconsulting.com

REVISIONS

NO.	DATE	REVISION

LEGAL DESCRIPTION

LOT 2 OF PINE VIEW TERRACE, BLOCK 1, FOREST PARK ESTATES SUBDIVISION, SECTION 16, TOWNSHIP 33N, RANGE 10E, COUNTY OF YORK, SOUTH CAROLINA.

PROJECT NUMBER: 12PD040

SHEET 1 / 1