

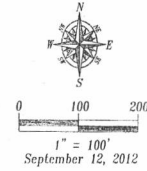
Lot 1
SEP 13 2012

RECEIVED

PRELIMINARY

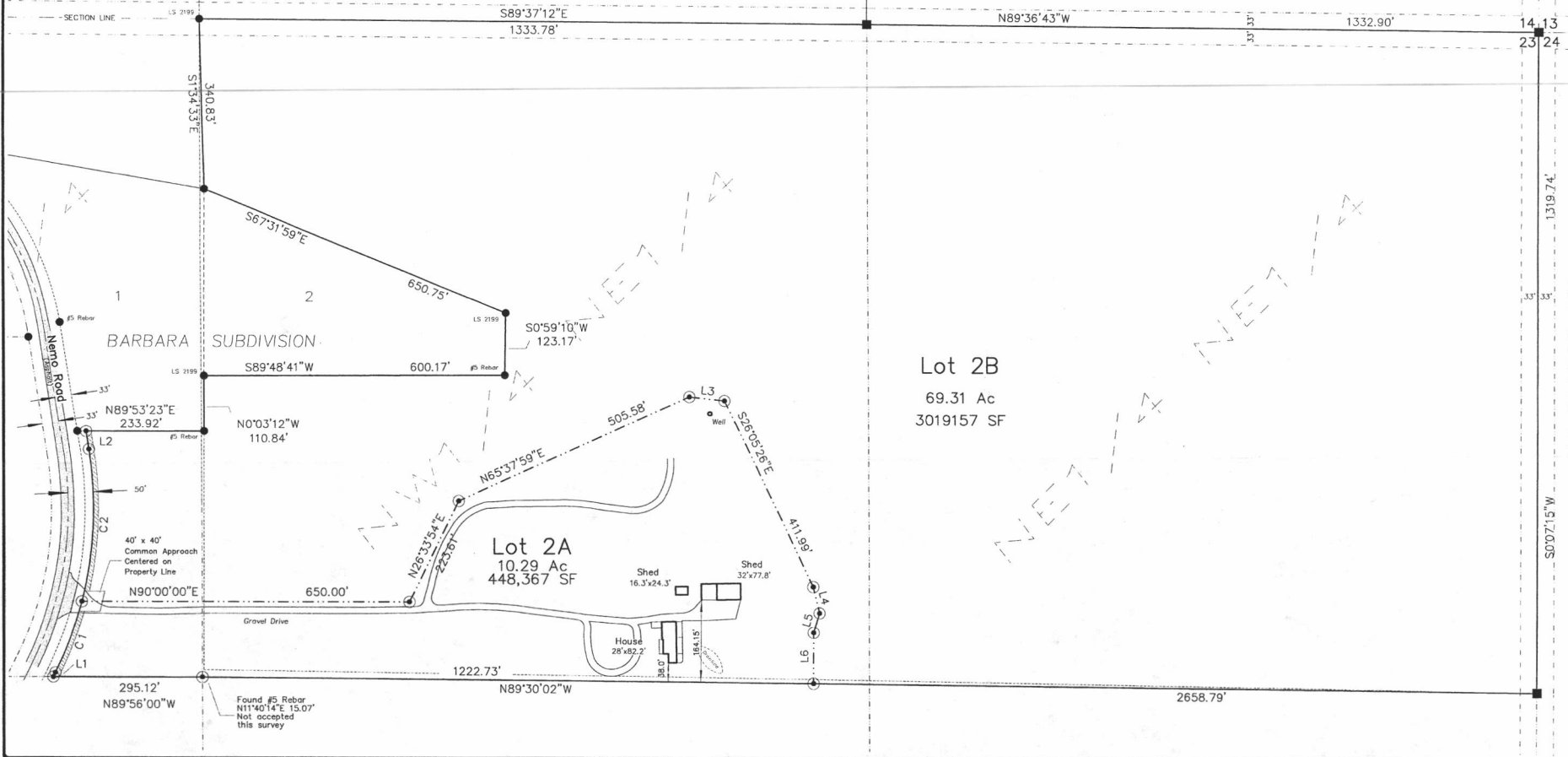
NUM	DELTA	ARC	RADIUS	BEARING	DISTANCE
C1	11°34'18"	151.47'	750.00'	N20°06'04"E	151.22'
C2	23°13'38"	384.05'	750.00'	N2°42'06"E	301.97'

NUM	BEARING	DISTANCE
L1	N25°53'13"E	9.37'
L2	N85°53'28"W	36.68'
L3	S83°38'54"E	69.41'
L4	S13°51'07"E	53.56'
L5	S16°45'15"W	40.92'
L6	S6°00'00"E	101.16'



- LEGEND**
- = Found US Forest Service Monument as noted
 - = Found Survey Monument as noted
 - ⊙ = Set Rebar with cap marked "RW Fisk 6565"

US FOREST SERVICE



Fisk Land Surveying & Consulting Engineers, Inc.
1022 Main Street - P.O. Box 8154
Rapid City, South Dakota 57709
(605) 345-1536 (fax) (605) 345-1012 (cell)
fisk@fisklandsurvey.com

The information herein is copyrighted material, and specific to the date, client and purpose as stated.
No warranty or guarantee is expressed or implied in any part, for any other purpose at any time except as stated.

Proposed Platting
Proposed Lots 2A and 2B
of U Lazy Two Ranch Estates Subdivision
Located in Section 23, T2N, R6E, BHM.,
Pennington County, South Dakota

Surveyed by: ML
Date: 3/26/08
Drawn by: RWF
Date: 7/30/12
Checked by: JF
Revisions

Project No.
08-03-01

Site Map