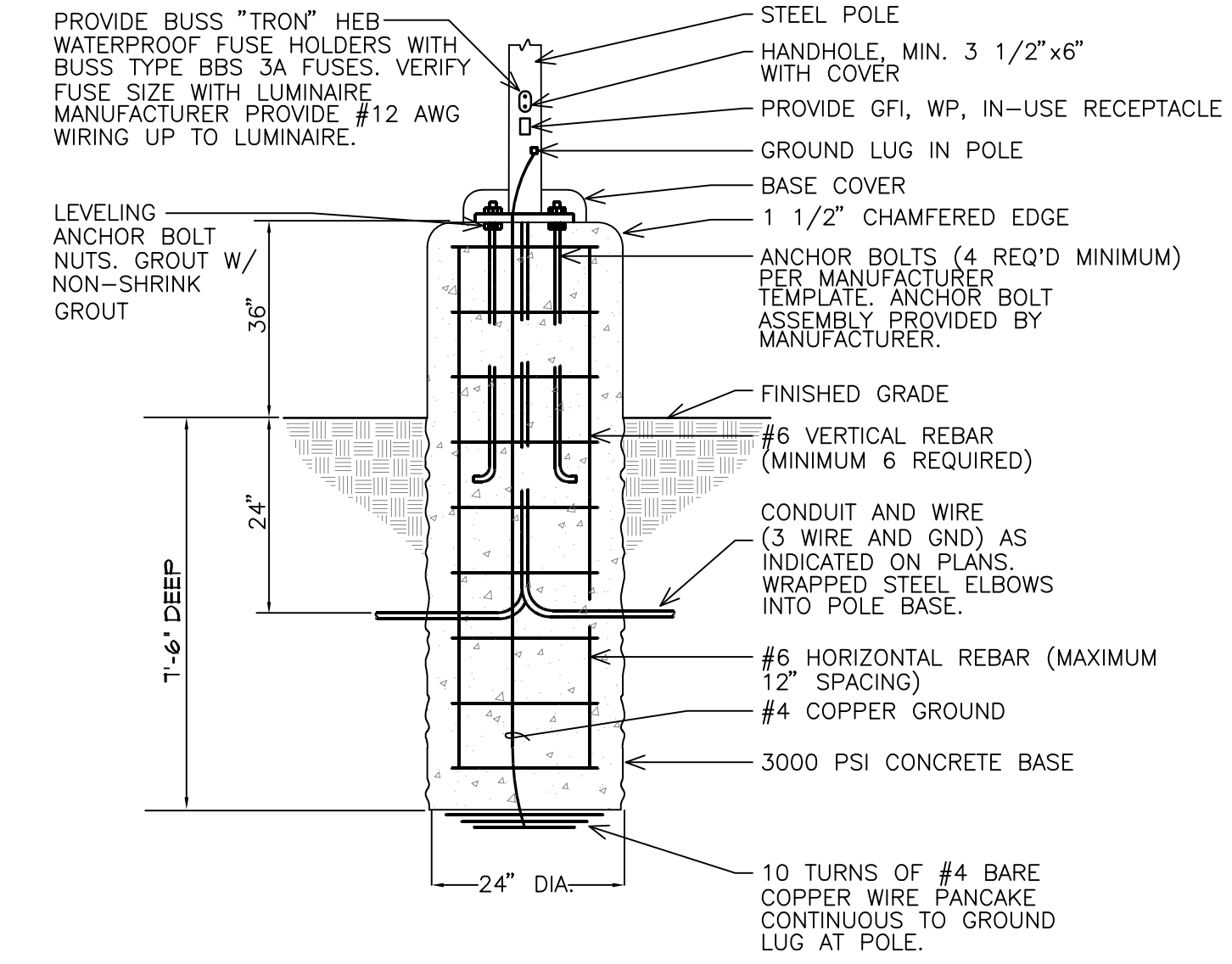


**ELECTRICAL SITE PLAN**  
SCALE: 1"=30'-0"



**RAISED POLE BASE**  
SCALE: N.T.S.

- GENERAL NOTES**  
(THIS SHEET ONLY)
- A. THE SITE LIGHTING PERFORMANCE DOES NOT INCLUDE CONTRIBUTIONS FROM BUILDING MOUNTED LIGHTING.
  - B. ALL WIRING TO BE #10 THWN. MIN CONDUIT TO BE 3/4" PVC.

- KEYED NOTES**  
(THIS SHEET ONLY)
- 1 EXISTING "SP" FIXTURE FROM PHASE 1. LIGHTING OUTPUT INDICATED.
  - 2 ROUTE TO MAIN ELECTRICAL ROOM. SITE LIGHTING PANEL/SOURCE TO BE DEFINED IN MAIN BUILDING DESIGN. SEE BUILDING PLANS FOR CONTROLS. RECEPTACLE HOME RUNS WITH LIGHTING CIRCUITING/CONDUITS.
  - 3 EXISTING UTILITY POWER SWITCH.
  - 4 EXISTING UTILITY COMMUNICATION BOX.
  - 5 PROVIDE TRENCH AND BACKFILL PER SPECIFICATION/WIRE REQUIREMENTS. SEE RISER.
  - 6 PROVIDE COMMUNICATION SERVICE ENTRANCE LATERAL CONDUITS. SEE BUILDING PLANS.

SITE LIGHTING FIXTURE SCHEDULE											
FIXTURE TYPE	FIXTURE DESCRIPTION (FEATURES)	VOLTS	MOUNTING	LAMPS	CONTROL MEDIA: LENS, LOUVERS, ETC.	MFR.	CATALOG NUMBER	Color	Mounting Heights	Min Efficacy	NOTES
P1	SINGLE-HEADED POLE / AREA FIXTURE	208	POLE	(1) 400W PMH CLEAR ED-28	RUGGED ONE-PIECE DIE-CAST CONSTRUCTION HIGH EFFICIENCY OPTICAL DIST, TYPE III	COOPER/LUMARK	MPTR-3S-400W-MT-LL	DK BRONZE	25 FT	0.85	1,2
P1S	SINGLE-HEADED POLE / AREA FIXTURE WITH HOUSE-SIDE SHIELD	208	POLE	(1) 400W PMH CLEAR ED-28	RUGGED ONE-PIECE DIE-CAST CONSTRUCTION HIGH EFFICIENCY OPTICAL DIST, TYPE III WITH HOUSE SIDE SHIELD	COOPER/LUMARK	MPTR-3S-400W-MT-LL-HS	DK BRONZE	25 FT	0.85	1,2
P1, P1S POLES	5" X 25FT SSP POLE WITH VIBRATION DAMPENERS	N/A	3 FT BASE		DRILLED FOR ONE LUMINAIRE	COOPER/LUMARK	SIMILAR TO COOPER SSP-5-7-BRZ-DM10-BC-WPR2 410NH	DK BRONZE	3 FT BASE		3,4
P2F	SINGLE-HEADED POLE / AREA FIXTURE (POLE EQUIPPED FOR FUTURE TYPE III HEAD)	208	POLE	(1) 400W PMH CLEAR ED-28	RUGGED ONE-PIECE DIE-CAST CONSTRUCTION HIGH EFFICIENCY OPTICAL DIST, TYPE III	COOPER/LUMARK	MPTR-3S-400W-MT-LL	DK BRONZE	25 FT	0.85	1,2
P2F POLE	5" X 25FT SSP POLE WITH VIBRATION DAMPENERS	N/A	3 FT BASE		DRILLED FOR TWO LUMINAIRES	COOPER/LUMARK	SIMILAR TO COOPER SSP-5-7-BRZ-DM2180-BC-WPR2 410NH	DK BRONZE	3 FT BASE		3,4

**GENERAL NOTES:**  
 A. LAMPS OF THE SAME TYPE MUST BE FROM THE SAME MANUFACTURER.  
 B. UNLESS A SPECIFIC CATALOG NUMBER OR SERIES IS LISTED, PROPOSED ALTERNATE MANUFACTURERS' FIXTURE CUTSHEETS AND PHOTOMETRIC REPORTS MUST BE SUBMITTED TO THE ENGINEER AT LEAST 10 DAYS PRIOR TO BID DATE. A FIXTURE THAT THE ENGINEER DOES NOT DETERMINE TO BE EQUAL OR BETTER THAN THE ONE SPECIFIED WILL NOT BE APPROVED BY ADDENDUM.  
 C. WHEN THE VOLTAGE IS INDICATED AS 120/277, PROVIDE MULTIVOLT BALLASTS CAPABLE OF OPERATING AT 120V OR 277V.

**SPECIFIC NOTES:**  
 1. LISTED FOR WET LOCATION.  
 2. LAMP WITH PHILIPS' MASTERCOLOR CERAMIC METAL HALIDE LAMP OR EQUIVALENT - PHILIPS # CDM 400W/842 PS ED28 CL V ALTO  
 3. FINAL POLE GUAGE AND DIAMETER DEPENDANT ON VENDOR LOADING AND HEAD CONFIGURATIONS.  
 4. PROVIDE POLE WITH VIBRATION DAMPENING SYSTEM.

SKYLINE ENGINEERING LLC  
615 E 12th Street  
Rapid City, SD 57701  
Tel: 605.737.3800  
Fax: 605.737.3859

SWIFTEL INC  
ELECTRICAL CONTRACTOR  
(605) 721-1193  
1301 Oregon Street, STE B  
Rapid City SD 57701

Project Title: MAINSTAY SUITES

Sheet Title: ELECTRICAL SITE PLAN

Revision	Date

Drawn: MMM

Checked: JBS

Date: 09/27/12

Scale: SEE PLAN

Sheet No. **E0.1**

SE Project No: 12031