

- NOTES:
1. ALL CURB AND GUTTER CONSTRUCTED IN PUBLIC RIGHT OF WAY SHALL BE 32" TYPE B OR BL AS PER RC DETAIL 60-2
 2. ALL DIMENSIONS ARE MEASURED FROM THE FACE OF THE CURB.
 3. THE CONTRACTOR SHALL INSTALL THE EMERGENCY GENERATOR WHERE SHOWN. THE CONTRACTOR SHALL ENSURE THE EMERGENCY GENERATOR IS CENTERED BETWEEN EXTERIOR BUILDING WINDOWS TO MINIMIZE WINDOW OBSTRUCTION. THE CONTRACTOR IS RESPONSIBLE FOR INSTALLING THE CONCRETE PAD TO HOUSE THE EMERGENCY GENERATOR.
 4. CONTRACTOR IS RESPONSIBLE FOR MOVING ALL DEMO MATERIALS FROM SITE.
 5. CONTRACTOR TO REMOVE ALL EXISTING SIDEWALK ON PHASE 2 SITE AND PROVIDE NEW SIDEWALK AS SHOWN
 6. PROTECT EXISTING PARKING LOT ASPHALT-ANY DAMAGED ASPHALT IDENTIFIED BY OWNER IS TO BE REPLACED AT CONTRACTORS EXPENSE PER ENGINEERS DIRECTION
 7. COORDINATE WITH PROPERTY MANAGER REGARDING EXISTING PARKED CARS.

PARKING REQUIREMENTS:

PHASE 1
 # OF APARTMENTS = 34
 # OF PARKING SPACE REQUIRED = 51

PHASE 2
 # OF APARTMENTS = 51
 # OF PARKING SPACE REQUIRED = 77
 TOTAL = 128

PARKING PROVIDED:

PHASE 1 & 2
 # OF ADA ACCESSIBLE SPACES = 5
 # OF PARKING SPACE PROVIDED (ON-SITE) = 70
 # OF PARKING SPACES PROVIDED (OFF-SITE) = 58
 TOTAL = 128

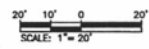
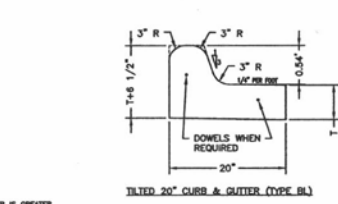
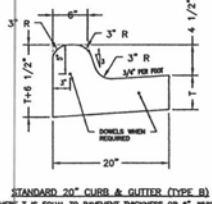
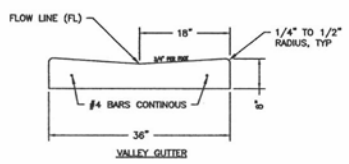
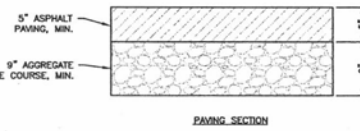
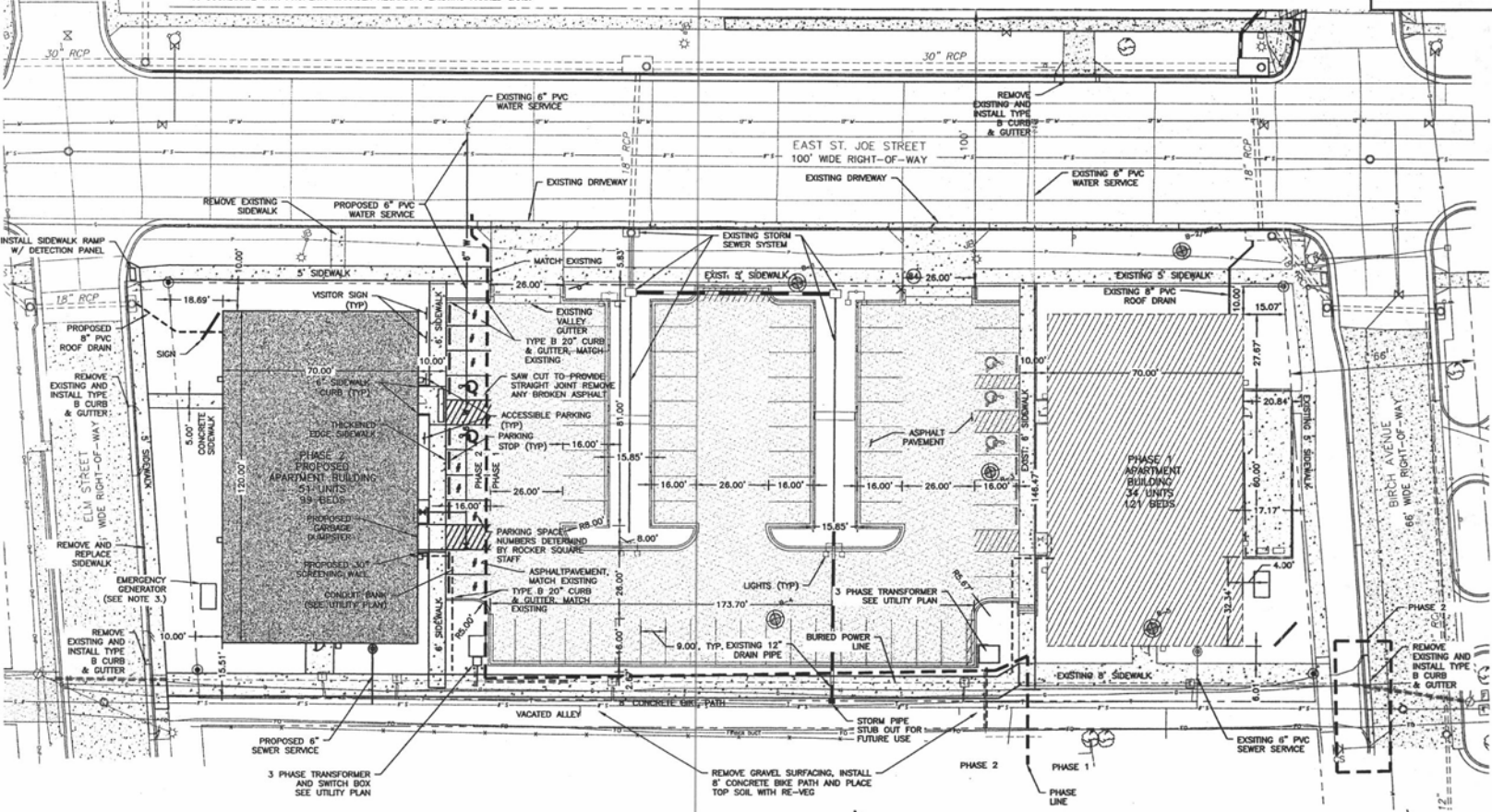
CITY OF RAPID CITY

Submittal:	9/14/2012 MAJOR AMENDMENT
Internal Job No:	11-0610
Designed By:	HS
Drawn By:	ACT/AV
Reviewed By:	RENNER & ASSOCIATES
Checked Date:	01/29/12



DREAM DESIGN INTERNATIONAL, INC.
 ENGINEERING, LANDSCAPE ARCHITECTURE, LAND PLANNING, CONSTRUCTION ADMINISTRATION
 828 KANSAS CITY STREET, SUITE 4, RAPID CITY, SD, 57701
 PHONE: (605) 348-0555 FAX: (605) 348-0545 WWW.DREAMDESIGNINC.COM

EAST ST. JOSEPH STREET CAMPUS HOUSING PHASE 2
 SOUTH DAKOTA SCHOOL OF MINES & TECHNOLOGY



Sheet Name: SITE LAYOUT PLAN

3 of 20

9/14/2012 10:58:17 AM: \\server\projects\12PD032\12PD032_SITES\12PD032_SITES_LAYOUT_PLAN.dwg, 10/11/2012 9:52:39 AM, LT