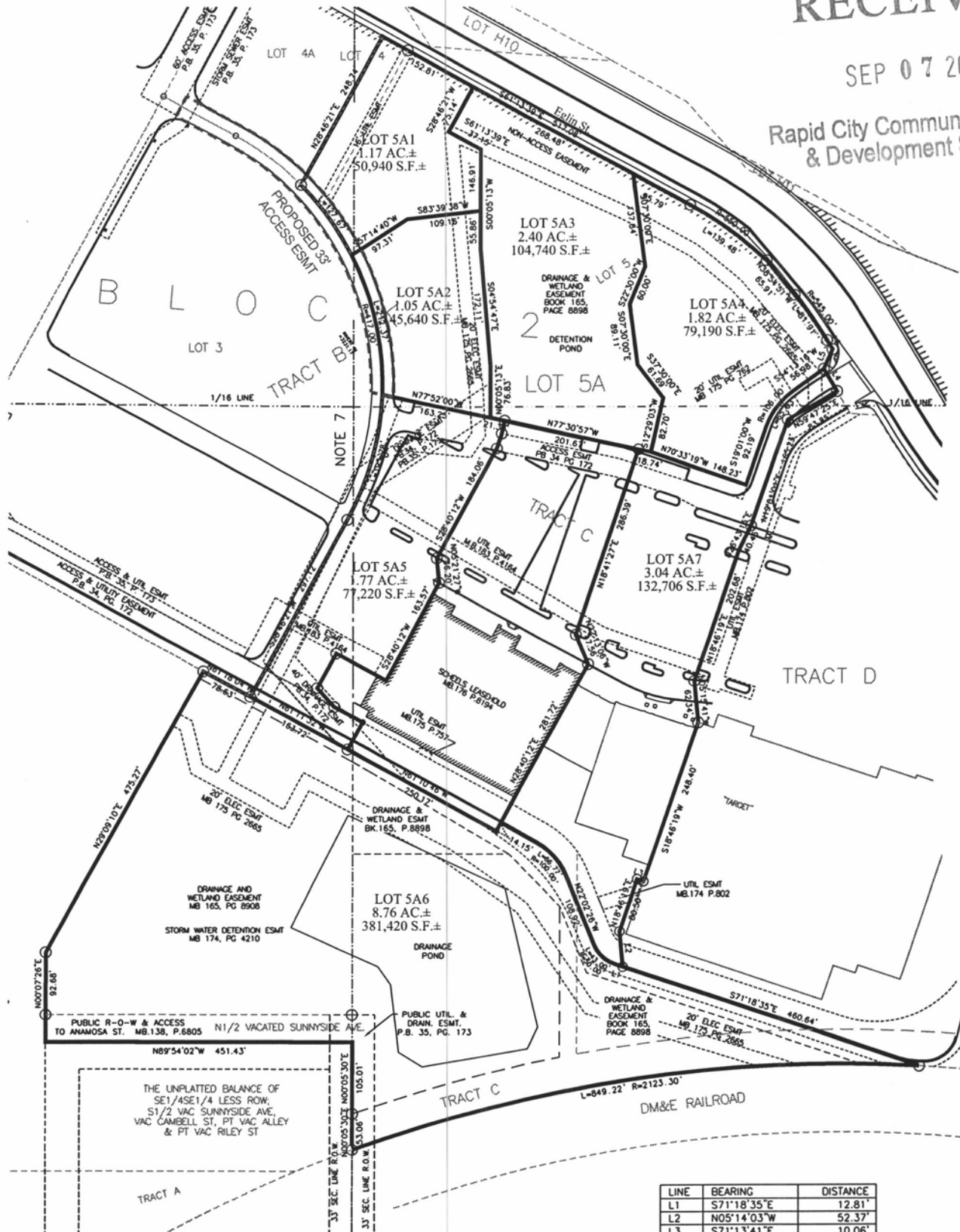


PRELIMINARY SUBDIVISION PLAN
OF LOTS 5A1 THRU 5A7, BLOCK 2 OF RUSHMORE CROSSING,
 FORMERLY LOT 5A OF BLOCK 2, OF RUSHMORE CROSSING;
 CONSISTING OF LOT 5 OF BLOCK 2, NORTH 1/2 VACATED SUNNYSIDE AVENUE, EAST 1/2 VACATED RILEY AVENUE
 AND THE VACATED PORTION OF CAMBELL STREET ADJACENT TO SAID LOT 5,
 LOCATED IN THE W1/2SW1/4 OF SECTION 29, AND THE E1/2SE1/4 OF SECTION 30, T2N, R8E, BHM,
 RAPID CITY, PENNINGTON COUNTY, SOUTH DAKOTA

RECEIVED

SEP 07 2012

Rapid City Community Planning
& Development Services



LINE	BEARING	DISTANCE
L1	S71°18'35"E	12.81'
L2	N05°14'03"W	52.37'
L3	S71°13'41"E	10.06'
L4	N30°12'35"W	38.33'
L5	N24°04'47"E	31.13'
L6	N31°12'19"W	15.42'



PREPARED BY:
ARLETH & ASSOCIATES

24 CLIFF STREET
DEADWOOD, SD 57732
605-578-1637

DATE: SEPTEMBER 7, 2012
 REV: _____
 SCALE: 1" = 100'

APPROVED: JMA
 DRAWN: FD
 DRAWING: 8530 REPLAT ALL.dwg