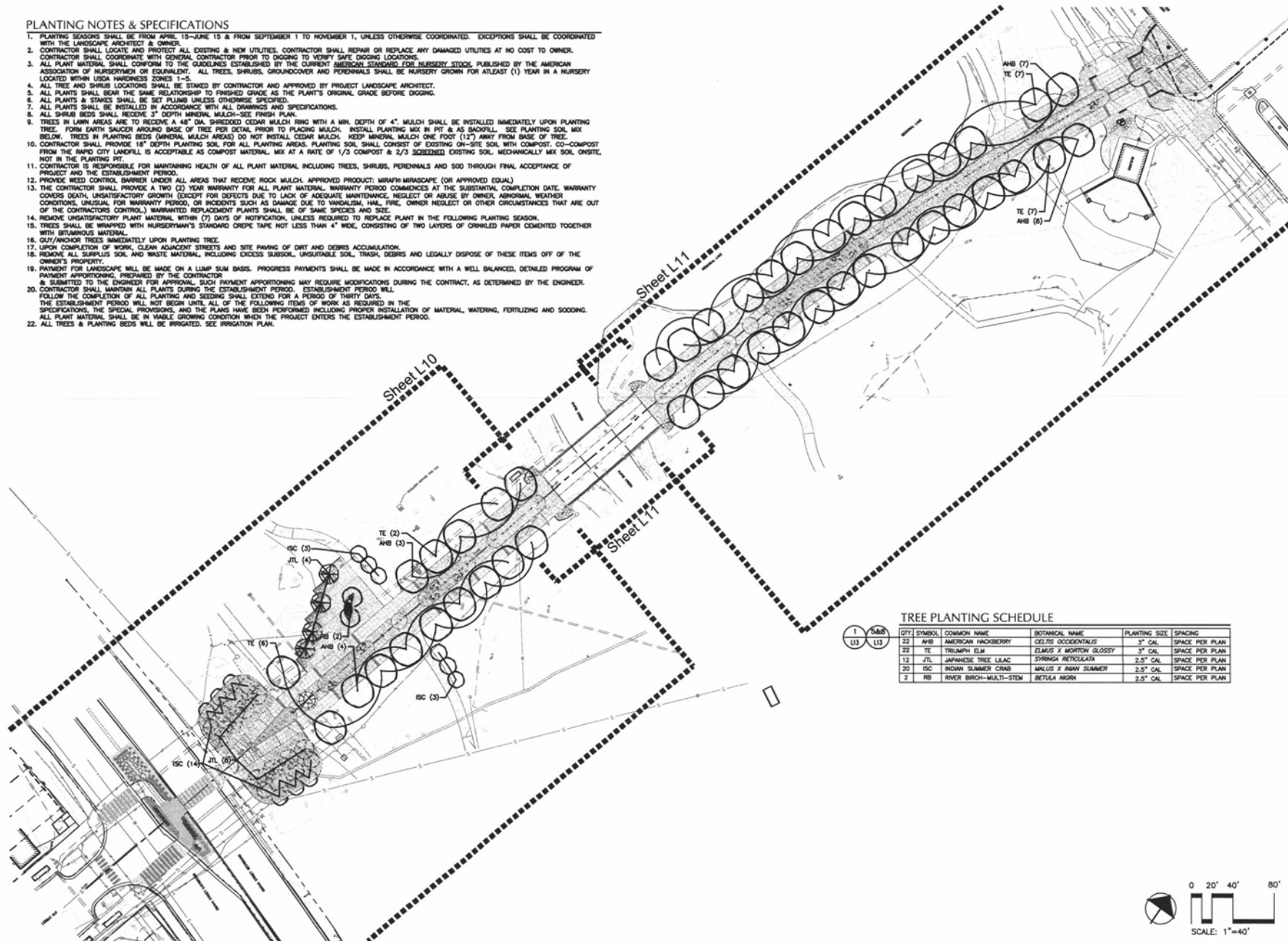


**PLANTING NOTES & SPECIFICATIONS**

1. PLANTING SEASONS SHALL BE FROM APRIL 15-JUNE 15 & FROM SEPTEMBER 1 TO NOVEMBER 1, UNLESS OTHERWISE COORDINATED. EXCEPTIONS SHALL BE COORDINATED WITH THE LANDSCAPE ARCHITECT & OWNER.
2. CONTRACTOR SHALL LOCATE AND PROTECT ALL EXISTING & NEW UTILITIES. CONTRACTOR SHALL REPAIR OR REPLACE ANY DAMAGED UTILITIES AT NO COST TO OWNER. CONTRACTOR SHALL COORDINATE WITH GENERAL CONTRACTOR PRIOR TO DIGGING TO VERIFY SAFE DIGGING LOCATIONS.
3. ALL PLANT MATERIAL SHALL CONFORM TO THE GUIDELINES ESTABLISHED BY THE CURRENT AMERICAN STANDARDS FOR NURSERY STOCK, PUBLISHED BY THE AMERICAN ASSOCIATION OF NURSERYMEN OR EQUIVALENT. ALL TREES, SHRUBS, GROUNDCOVER AND PERENNIALS SHALL BE NURSERY GROWN FOR ATLEAST (1) YEAR IN A NURSERY LOCATED WITHIN USDA HARDINESS ZONES 1-5.
4. ALL TREE AND SHRUB LOCATIONS SHALL BE STAKED BY CONTRACTOR AND APPROVED BY PROJECT LANDSCAPE ARCHITECT.
5. ALL PLANTS SHALL BEAR THE SAME RELATIONSHIP TO FINISHED GRADE AS THE PLANT'S ORIGINAL GRADE BEFORE DIGGING.
6. ALL PLANTS & STAKES SHALL BE SET PLUMB UNLESS OTHERWISE SPECIFIED.
7. ALL PLANTS SHALL BE INSTALLED IN ACCORDANCE WITH ALL DIMENSIONS AND SPECIFICATIONS.
8. ALL SHRUB BEDS SHALL RECEIVE 3" DEPTH MINERAL MULCH-SEE FINISH PLAN.
9. TREES IN LAWN AREAS ARE TO RECEIVE A 48" DIA. SHREDDED CEDAR MULCH RING WITH A MIN. DEPTH OF 4". MULCH SHALL BE INSTALLED IMMEDIATELY UPON PLANTING TREE. FORM EARTH SHOULDER AROUND BASE OF TREE PER DETAIL. PRIOR TO PLACING MULCH, INSTALL PLANTING MIX IN PIT & AS BACKFILL. SEE PLANTING SOIL MIX BELOW. TREES IN PLANTING BEDS (MINERAL MULCH AREAS) DO NOT INSTALL CEDAR MULCH. KEEP MINERAL MULCH ONE FOOT (12") AWAY FROM BASE OF TREE.
10. CONTRACTOR SHALL PROVIDE 18" DEPTH PLANTING SOIL FOR ALL PLANTING AREAS. PLANTING SOIL SHALL CONSIST OF EXISTING ON-SITE SOIL WITH COMPOST, CO-COMPOST FROM THE RAPID CITY LANDFILL AS COMPOST MATERIAL, MIX AT A RATE OF 1/3 COMPOST & 2/3 SCREENED EXISTING SOIL. MECHANICALLY MIX SOIL ON-SITE, NOT IN THE PLANTING PIT.
11. CONTRACTOR IS RESPONSIBLE FOR MAINTAINING HEALTH OF ALL PLANT MATERIAL INCLUDING TREES, SHRUBS, PERENNIALS AND SOO THROUGH FINAL ACCEPTANCE OF PROJECT AND THE ESTABLISHMENT PERIOD.
12. PROVIDE WEED CONTROL BARRIER UNDER ALL AREAS THAT RECEIVE ROCK MULCH. APPROVED PRODUCT: MIRAFIX MIRASCAPES (OR APPROVED EQUAL).
13. THE CONTRACTOR SHALL PROVIDE A TWO (2) YEAR WARRANTY FOR ALL PLANT MATERIAL. WARRANTY PERIOD COMMENCES AT THE SUBSTANTIAL COMPLETION DATE. WARRANTY COVERS DEATH, UNSATISFACTORY GROWTH (EXCEPT FOR DEFECTS DUE TO LACK OF ADEQUATE MAINTENANCE, NEGLIGENCE OR ABUSE BY OWNER, ABNORMAL WEATHER CONDITIONS, UNUSUAL FOR WARRANTY PERIOD, OR INCIDENTS SUCH AS DAMAGE DUE TO VANDALISM, HAIL, FIRE, OWNER NEGLIGENCE OR OTHER CIRCUMSTANCES THAT ARE OUT OF THE CONTRACTOR'S CONTROL.) WARRANTIES REPLACEMENT PLANTS SHALL BE OF SAME SPECIES AND SIZE.
14. REMOVE UNSATISFACTORY PLANT MATERIAL WITHIN (7) DAYS OF NOTIFICATION, UNLESS REQUIRED TO REPLACE PLANT IN THE FOLLOWING PLANTING SEASON.
15. TREES SHALL BE WRAPPED WITH NURSERYMAN'S STANDARD CRUPE TAPE NOT LESS THAN 4" WIDE, CONSISTING OF TWO LAYERS OF DRINKED PAPER CEMENTED TOGETHER WITH BITUMINOUS MATERIAL.
16. GUY/ANCHOR TREES IMMEDIATELY UPON PLANTING TREE.
17. UPON COMPLETION OF WORK, CLEAN ADJACENT STREETS AND SITE PAVING OF DIRT AND DEBRIS ACCUMULATION.
18. REMOVE ALL SURPLUS SOIL AND WASTE MATERIAL, INCLUDING EXCESS SUBSOIL, UNSUITABLE SOIL, TRASH, DEBRIS AND LEGALLY DISPOSE OF THESE ITEMS OFF OF THE OWNER'S PROPERTY.
19. PAYMENT FOR LANDSCAPE WILL BE MADE ON A LUMP SUM BASIS. PROGRESS PAYMENTS SHALL BE MADE IN ACCORDANCE WITH A WELL-BALANCED, DETAILED PROGRAM OF PAYMENT APPROPRIATE, PREPARED BY THE CONTRACTOR & SUBMITTED TO THE ENGINEER FOR APPROVAL. SUCH PAYMENT APPROPRIATE MAY REQUIRE MODIFICATIONS DURING THE CONTRACT, AS DETERMINED BY THE ENGINEER.
20. CONTRACTOR SHALL MAINTAIN ALL PLANTS DURING THE ESTABLISHMENT PERIOD. ESTABLISHMENT PERIOD SHALL FOLLOW THE COMPLETION OF ALL PLANTING AND SEEDING SHALL EXTEND FOR A PERIOD OF THIRTY DAYS.
21. THE ESTABLISHMENT PERIOD WILL NOT BEGIN UNTIL ALL OF THE FOLLOWING ITEMS OF WORK AS REQUIRED IN THE SPECIFICATIONS, THE SPECIAL PROVISIONS, AND THE PLANS HAVE BEEN PERFORMED INCLUDING PROPER INSTALLATION OF MATERIAL, WATERING, FERTILIZING AND SOONING.
22. ALL PLANT MATERIAL SHALL BE IN VISIBLE GROWING CONDITION WHEN THE PROJECT ENTERS THE ESTABLISHMENT PERIOD.
23. ALL TREES & PLANTING BEDS WILL BE IRRIGATED. SEE IRRIGATION PLAN.



**TREE PLANTING SCHEDULE**

QTY	SYMBOL	COMMON NAME	BOTANICAL NAME	PLANTING SIZE	SPACING
22	AHB	AMERICAN HONSBERRY	CELTIS OCCIDENTALIS	3" CAL.	SPACE PER PLAN
22	TE	TRIUMPH ELM	ELMUS X MORTONIA GLOSSY	3" CAL.	SPACE PER PLAN
13	JTL	JAPANESE TREE LILAC	SYRINGA RETICULATA	2.5" CAL.	SPACE PER PLAN
20	ISC	INDIAN SUMMER CRAB	MALUS X INDIAN SUMMER	2.5" CAL.	SPACE PER PLAN
2	RB	RIVER BIRCH-MULTI-STEM	BETULA NIGRA	2.5" CAL.	SPACE PER PLAN

Landscape Architect/Engineer/Contractor

**Wyss Associates, Inc.**  
Landscape Architecture  
Urban & Reclamation Design  
Civil/Structural Architecture  
120 Main Street, Suite 200, Rapid City, SD 57701-3070  
Tel: 605.342.2288 Fax: 605.342.8800  
www.wyssassociates.com

Civil Engineering & Surveying

**FMG, Inc.**  
Professional Engineer  
1001 E. 10th Street, Suite 100  
Rapid City, SD 57701-3070  
Tel: 605.342.2288 Fax: 605.342.8800  
www.fmginc.com

Mechanical & Electrical Engineering

**WPE CONSULTING ENGINEERS**  
Mechanical, Electrical, Plumbing, Fire, and Energy  
1001 E. 10th Street, Suite 100  
Rapid City, SD 57701-3070  
Tel: 605.342.2288 Fax: 605.342.8800  
www.wpe-engineers.com

---

Project Name: **Memorial Park Promenade**  
Rapid City, South Dakota

---

Sheet Title: **Landscape Plan (Overall)**

---

DESIGNED BY: PHV  
DRAWN BY: CMV / FBB  
APPROVED BY: MBE  
PROJECT NO.: 12301.2  
DATE: July 2012

NO.	REVISION	DATE

---

Sub Sheet: **L10**  
Sheet: **OF**