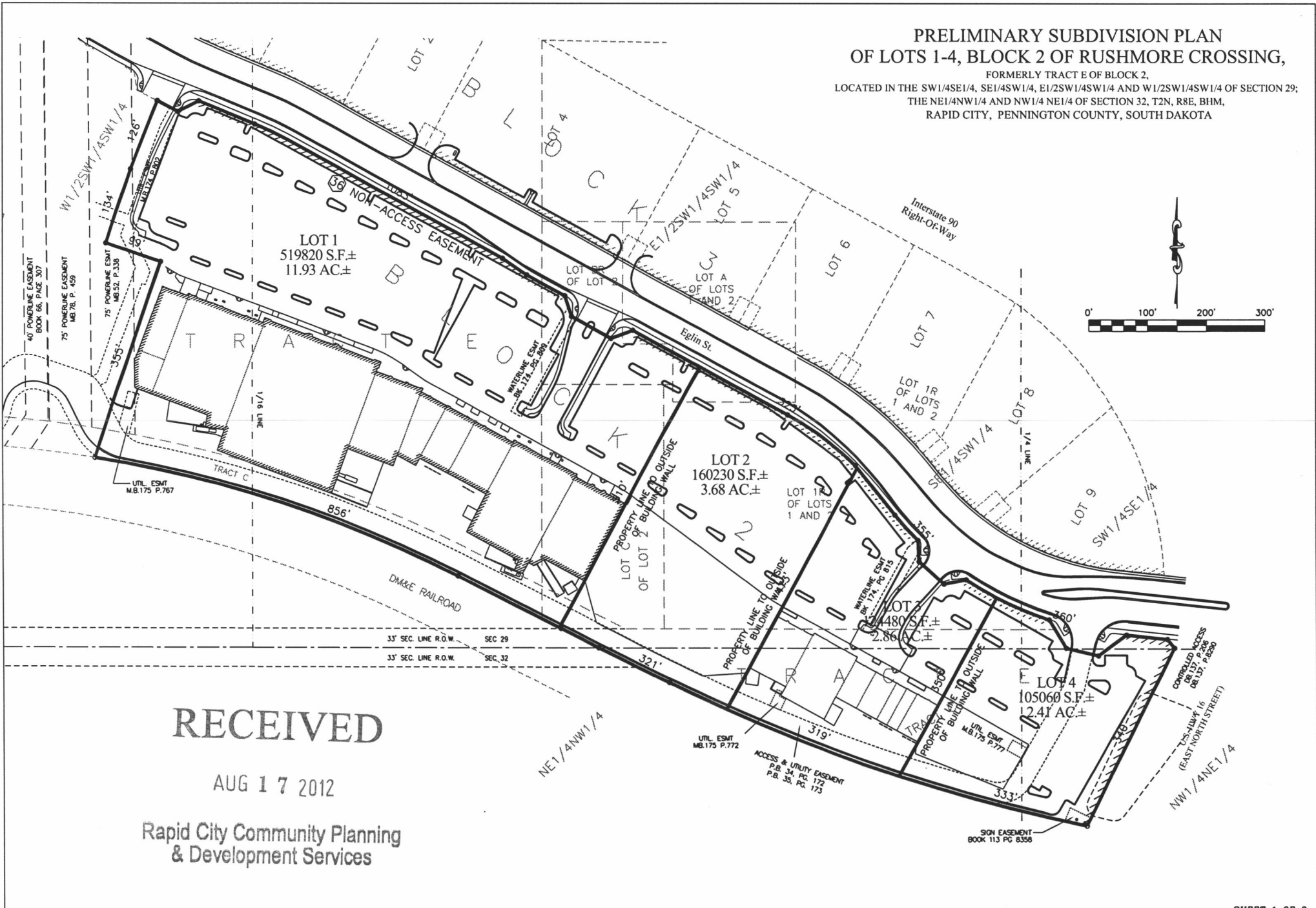


**PRELIMINARY SUBDIVISION PLAN
OF LOTS 1-4, BLOCK 2 OF RUSHMORE CROSSING,**

FORMERLY TRACT E OF BLOCK 2,
LOCATED IN THE SW1/4SE1/4, SE1/4SW1/4, E1/2SW1/4SW1/4 AND W1/2SW1/4SW1/4 OF SECTION 29;
THE NE1/4NW1/4 AND NW1/4 NE1/4 OF SECTION 32, T2N, R8E, B1M,
RAPID CITY, PENNINGTON COUNTY, SOUTH DAKOTA



RECEIVED

AUG 17 2012

Rapid City Community Planning
& Development Services

	PREPARED BY: ARLETH & ASSOCIATES	24 CLIFF STREET DEADWOOD, SD 57732 605-578-1637	JOB NO. 8530	DATE: AUGUST 17, 2012	APPROVED: JMA
				REV:	DRAWN: FD
				SCALE: 1" = 100'	DRAWING: 8530 REPLAT ALL.dwg