

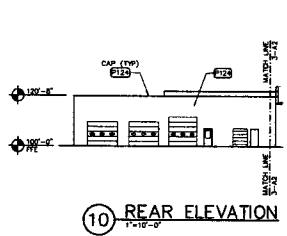
12PD027

ELEVATION @ GR
12 COMPACTOR CHUTE ACCESS DOOR
3/4" = 1'-0"

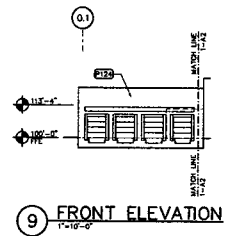
SECTION @ GR
11 COMPACTOR CHUTE ACCESS DOOR
3/4" = 1'-0"

COLOR LEGEND	SHEET NOTES
E23 OSMA Standard "Safety Yellow"	1. POWER WASH JOSE OF EXTERIOR WALLS PRIOR TO PAINTING.
E24 OSMA Standard "Safety Red"	2. PAINT EXTERIOR OF BUILDING AS SHOWN.
E25 SHW 8800 "Dorian"	3. PAINT DOOR WOODS, HOLLOW METAL STEEL DOORS AND FRAMES, EXPOSED METAL FLASHING, HANDRAILS, GAS LINES, AND EXPOSED MISCELLANEOUS STEEL TO MATCH ADJACENT BUILDING COLOR (SEE NOTE 4).
E26 SHW 8338 "Hiram Black"	4. PAINT CANOPY STRUCTURAL STEEL AND FLASHING TO MATCH ADJACENT BUILDING.
E27 SHW 8082 "Cable Brown"	5. PAINT CANOPY - F25 OR AS SHOWN, PER OS HANDRAILS.
E28 SHW 7904 (EXT) "Executive Drummer's Canal"	6. PAINT GARDEN CENTER STEEL DOORS AND FRAMES PER WHEN ADJACENT TO ORNAMENTAL METAL STEEL.
E29 SHW 7522 "Meadowlark"	7. PAINT SPRINKLER VALVES (SV). DO NOT PAINT OVER SIGHT GLASS OR FIRE ALARM BELL.

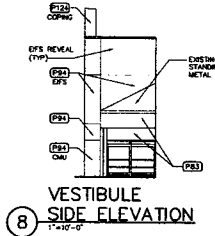
8. PAINT SECURITY WALL PACK, INCLUDES TO MATCH ADJACENT BUILDING. REMOVE OVERCROWD FROM LIGHT LENSES.
9. PAINT ALL EXTERIOR BOLLARDS TO MATCH EXTERIOR COLOR UNLESS NOTED TO RECEIVE PLASTIC BOLLARD SLIDERS.



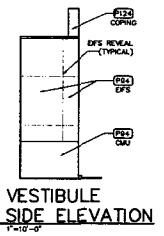
10 REAR ELEVATION
1/2" = 1'-0"



9 FRONT ELEVATION
1/2" = 1'-0"



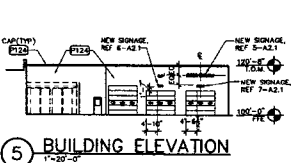
8 VESTIBULE SIDE ELEVATION
1/2" = 1'-0"



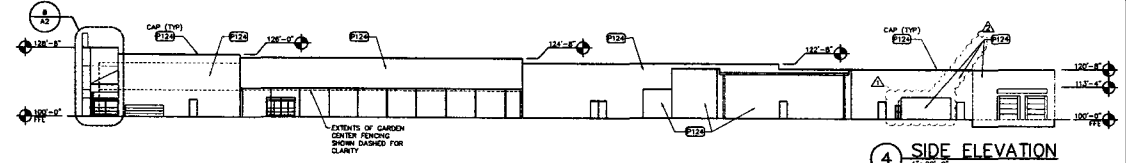
7 VESTIBULE SIDE ELEVATION
1/2" = 1'-0"



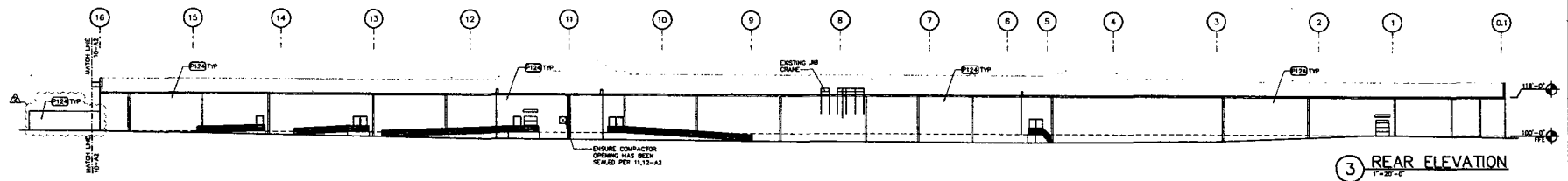
6 SEASONAL SHOP REAR ELEVATION
1/2" = 1'-0"



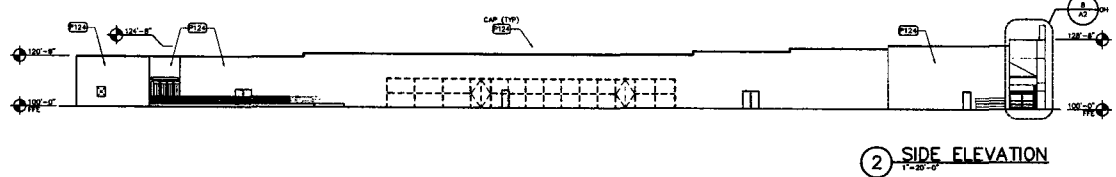
5 BUILDING ELEVATION
1/2" = 1'-0"



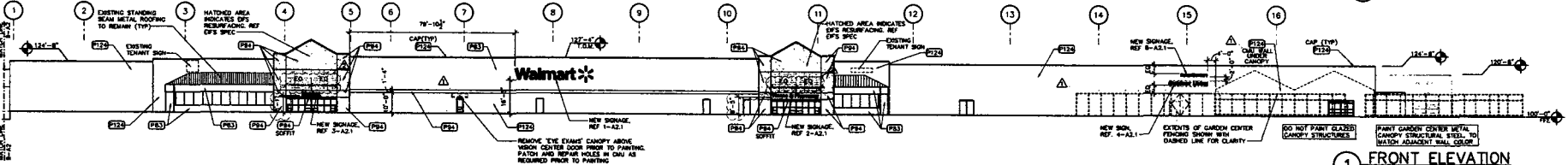
4 SIDE ELEVATION
1/2" = 1'-0"



3 REAR ELEVATION
1/2" = 1'-0"



2 SIDE ELEVATION
1/2" = 1'-0"



1 FRONT ELEVATION
1/2" = 1'-0"

RECEIVED
JUL 12 2012
RAPID CITY COMMUNITY PLANNING & DEVELOPMENT SERVICES

Walmart
RAPID CITY, SD

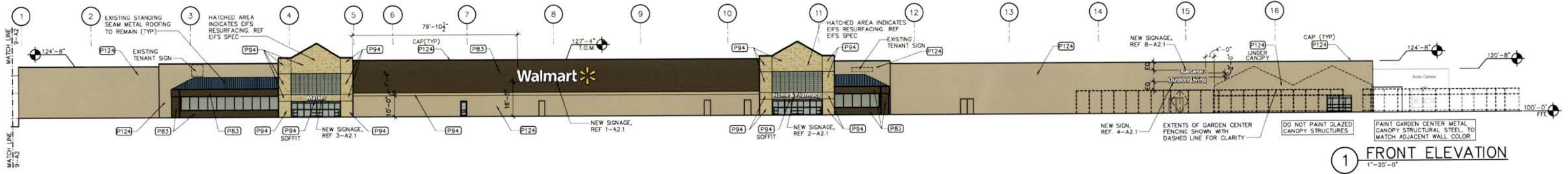
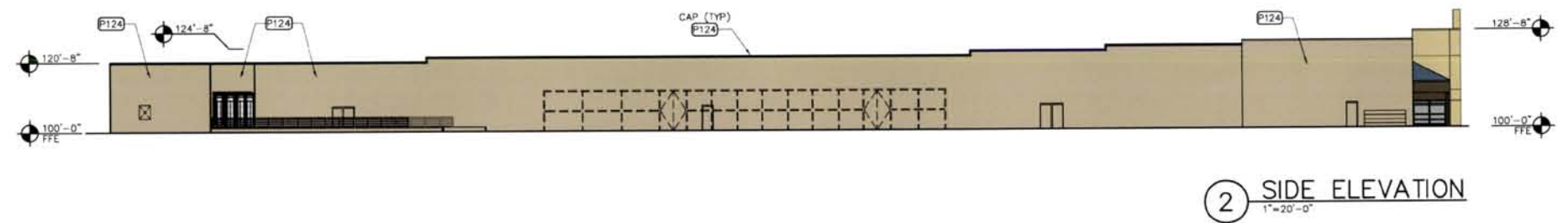
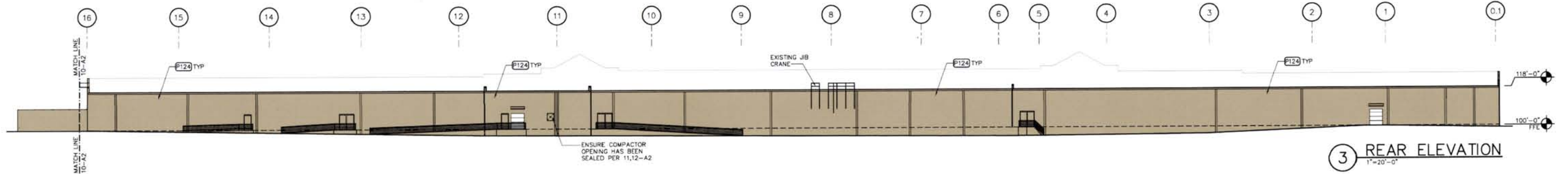
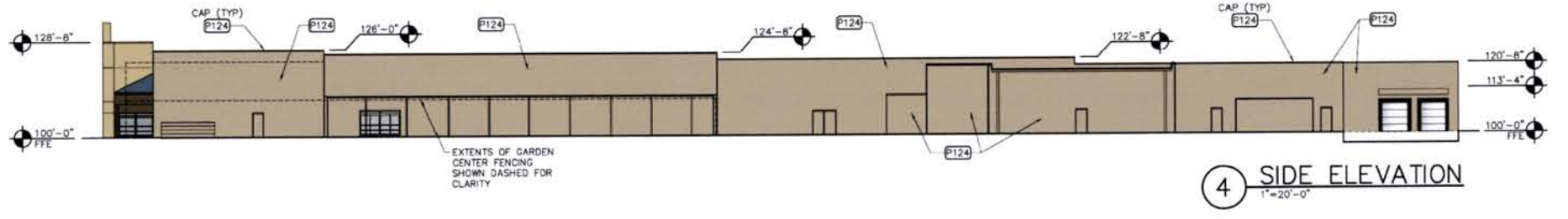
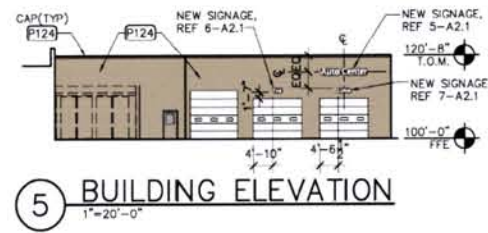
ISSUE BLOCK	DATE	BY
1	05/20/12	MSL
2	07/11/12	AKB

DESIGN BY: SAP
DRAW BY: KXB
PROJECT: 204 SC EXB
PROJECT CODE: 03/30/12
ISSUE DATE: 06/08/12



EXTERIOR ELEVATIONS

SHEET: A2



RECEIVED

JUL 19 2012

RAPID CITY COMMUNITY PLANNING & DEVELOPMENT SERVICES

P83 SHERWIN WILLIAMS SW 6082 "COBBLE BROWN"

P94 SHERWIN WILLIAMS SW 7694 "DROMEDARY CAMEL"

P124 SHERWIN WILLIAMS SW 7522 "MEADOWLARK"



June 21, 2012

Rapid City, SD #1604

Color Elevations