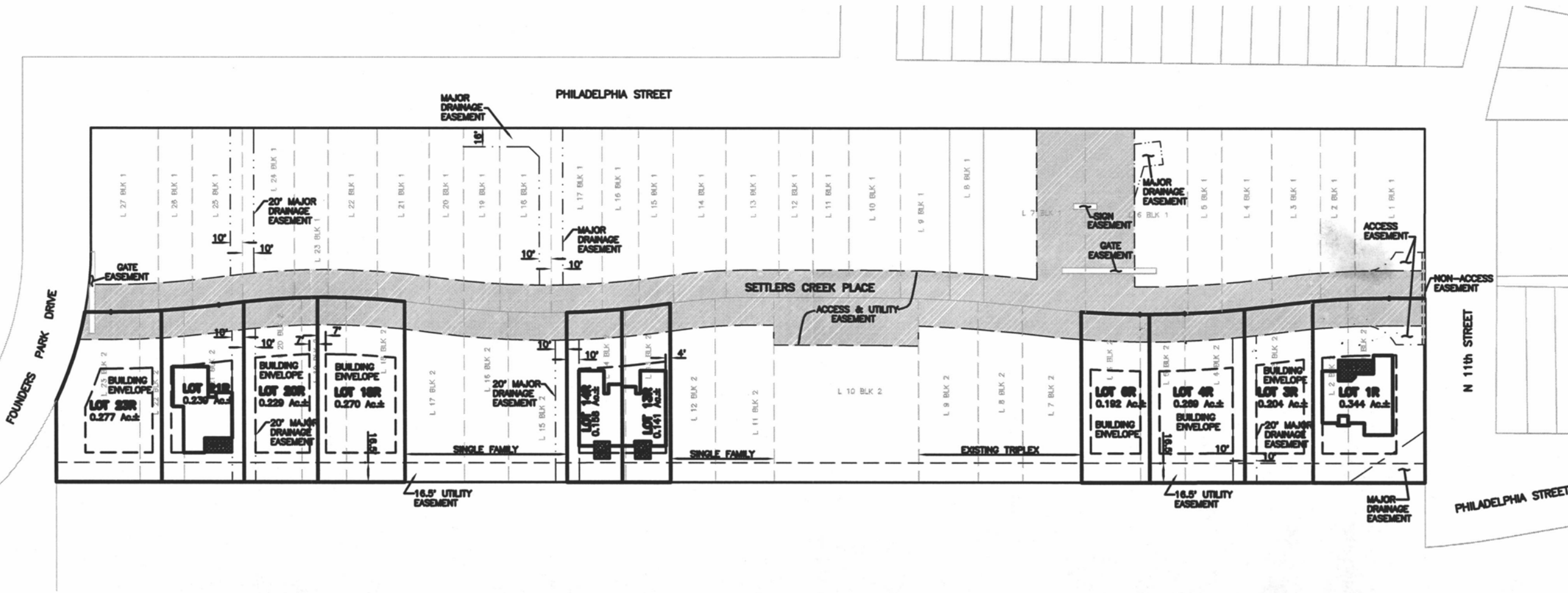


APRIL 10, 2012  
 SCALE: 1" = 50'



RECEIVED

JUL 03 2012  
 Rapid City Community Planning  
 & Development Services

**SPERLICH**  
 Consulting, Inc.  
 921 Columbus St., Suite 1 Rapid City SD 57701  
 TEL: (605) 721-4040 • FAX: (605) 721-4048  
 E-MAIL: info@sperrlichconsulting.com  
 • Engineering • Surveying • Planning



REVISIONS	DATE	REVISION

**LEGAL DESCRIPTION**  
 LOTS 1 THROUGH 17 OF BLOCK 1 AND LOTS 1 THROUGH 17 OF BLOCK 2, SETTLEMENTS CREEK DEVELOPMENT, LOCATED IN THE CITY OF RAPID CITY, S.D., BEING PART OF THE TRACT DESCRIBED IN SD 87-1-321 DRAWING 371-204

**SETTLERS CREEK  
 FINAL PLAN DEVELOPMENT OVERLAY**