

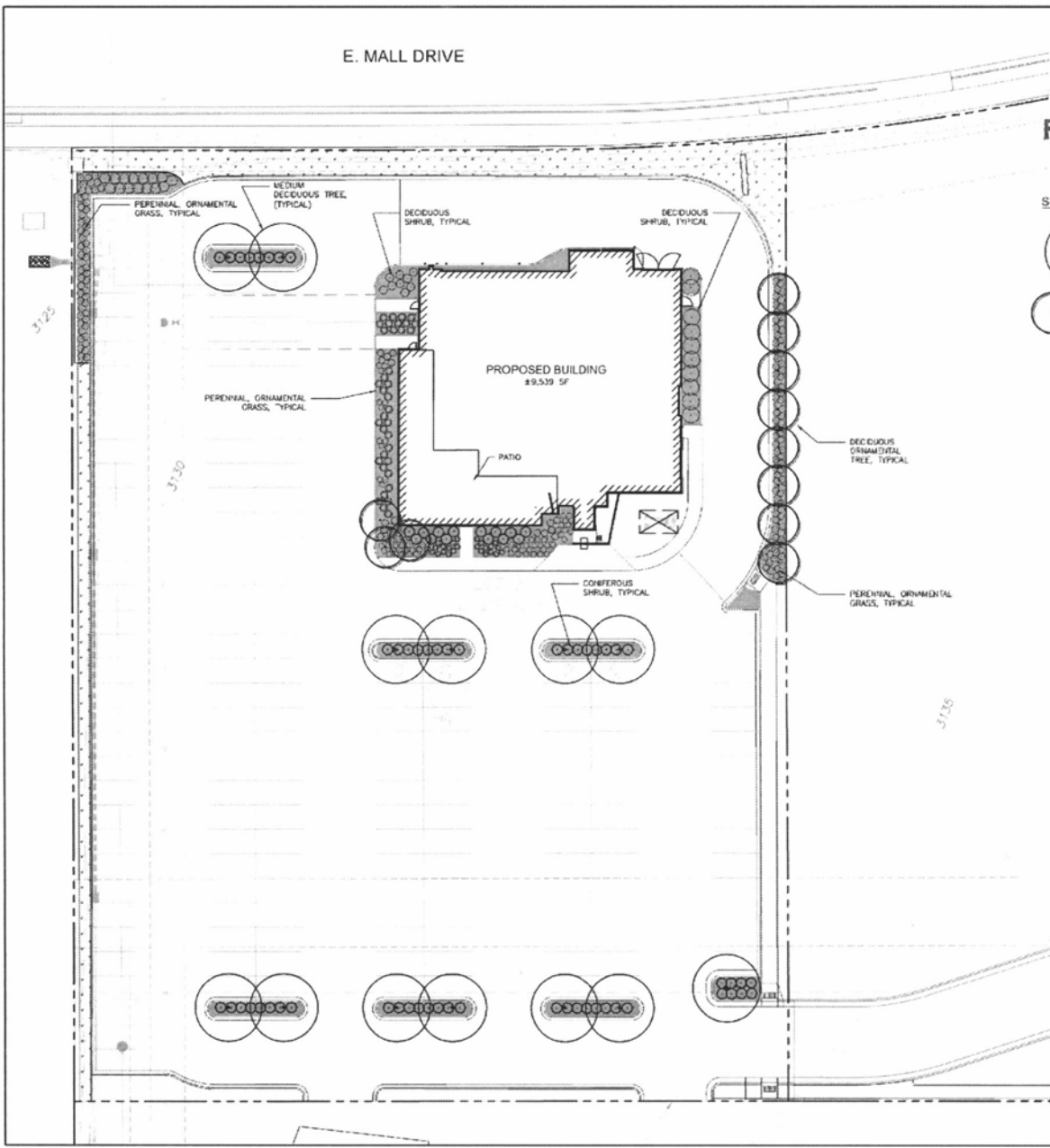
RECEIVED

JUL 02 2012

RAPID CITY COMMUNITY PLANNING & DEVELOPMENT SERVICES

CITY OF RAPID CITY  
 PROJECT: PD Overlay Submittal  
 PERMITTED BY: [Signature]  
 COMMENTS:

E. MALL DRIVE



SYMBOLS LEGEND

- MEDIUM TREE (E.G. FALL GOLD ASH, PATRIOT GREEN ASH)
- SMALL ORNAMENTAL TREE (E.G. AUTUMN BRILLIANCE SERVICE BERRY)
- CONIFEROUS SHRUB (E.G. BLUEFIELD JUNIPER, BLUE CHIP HORIZONTAL JUNIPER, WILTON CARPET JUNIPER)
- DECIDUOUS SHRUB (E.G. GROW LOW FRAGRANT SUMAC)
- 6" WIDE CONCRETE LANDSCAPE EDGING
- GAZONED TURF AREA
- RIVER ROCK MINERAL MULCH 2" MIN @
- PERENNIAL ORNAMENTAL GRASS (E.G. SILVER PEA WHEAT MOSCANTHUS, KARL FOSTER ORNAMENTAL GRASS, PURPLE HAZE SALVIA, RUSSIAN SAGE, PURPLE DOME ASTER, BLUE GAY GRASS, STELLA BORDO DAY LILY)

KEY TO LANDSCAPE POINTS

DESCRIPTION	UNITS/POINTS GIVEN	TOTAL POINTS
PROPERTY SQUARE FOOTAGE (2.123 AC.)		92,470 SQ. FT.
STRUCTURE SQUARE FOOTAGE		8,939 SQ. FT.
LANDSCAPE POINTS REQUIRED		82,831 POINTS
TURF AREA	125 S.Y. @ 10 PTS / S.Y.	1,250 PTS.
R.O.W. (10' @ 20% OF TOTAL R.O.W. PTS. ALLOWED)	362 S.Y. @ 10 PTS / S.Y.	3,620 PTS.
MEDIUM DECIDUOUS TREES	13 @ 1000 PTS EA.	13,000 PTS.
SMALL DECIDUOUS TREES	11 @ 500 PTS EA.	5,500 PTS.
SHRUBS	82 @ 250 PTS EA.	20,500 PTS.
GROUNDCOVER	292 S.Y. @ 100 PTS/S.Y.	29,200 PTS.
	POINTS PROVIDED	52,820 PTS.

NOTE:  
 LANDSCAPE POINTS REQUIRED = 82,831 PTS  
 LANDSCAPE POINTS PROVIDED = 52,820 PTS

IRIGATION NOTE:  
 THE IRRIGATION SYSTEM FOR THIS PROJECT SHALL BE A SPRAY AND EMULSION SYSTEM. IRRIGATION SHALL BE OF HIGH PRESSURE AND SPRAY HEADS. ALL PLANTING AREAS SHALL BE KEYPICARE SYSTEMS AND RECEIVE EMITTERS. THE IRRIGATION SYSTEM WILL BE SUPPLIED BY A 2" WATER MAIN PROVIDED AT THE DRIVE. SEE ALSO LOCAL CODES FOR IRRIGATION REGULATIONS. ALL PLUMBING SHALL FOLLOW LOCAL PLUMBING CODES.



PRELIMINARY FOR REVIEW ONLY

DREAM DESIGN INTERNATIONAL, INC.  
 ENGINEERING, LANDSCAPE ARCHITECTURE,  
 LAND PLANNING, CONSTRUCTION ADMINISTRATION  
 PHONE: (605) 348-0535 FAX: (605) 348-0545 WWW.DREAMDESIGNINC.COM  
 QUAKER STEAK & LUBE RESTAURANT SITE  
 RAPID CITY, SD

