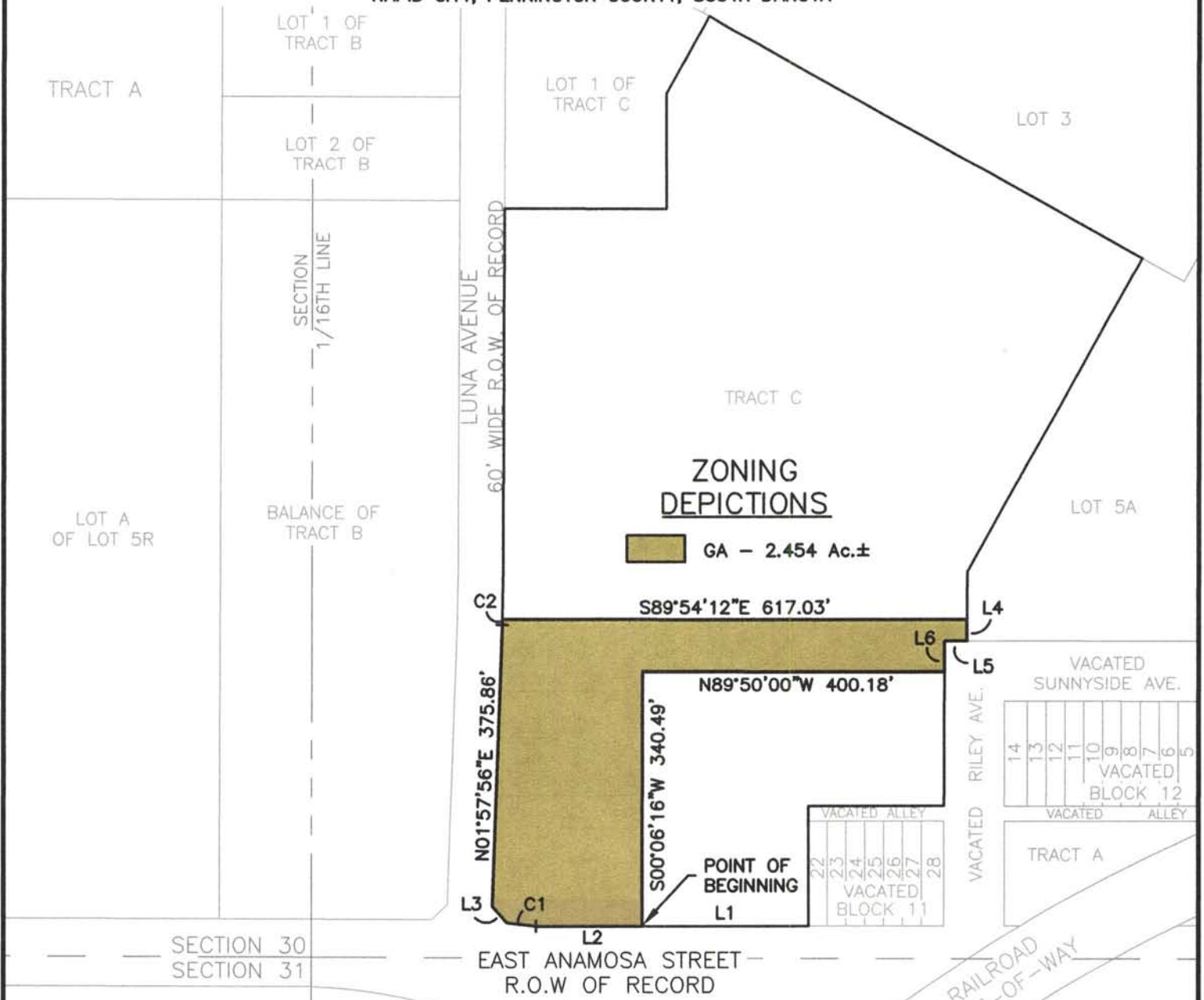


12RZ012

EXISTING ZONING MAP OF
**PORTION OF TRACT C,
 RUSHMORE CENTER**
 LOCATED IN THE SE1/4 OF THE SE1/4
 SECTION 30, T2N, R8E, BHM
 RAPID CITY, PENNINGTON COUNTY, SOUTH DAKOTA



**ZONING
 DEPICTIONS**

GA - 2.454 Ac.±

LINE	BEARING	LENGTH
L1	N89°57'35"W	220.52'
L2	N89°57'35"W	140.88'
L3	N41°40'33"W	28.95'
L4	S00°08'44"W	28.36'
L5	N89°50'59"W	30.09'
L6	S00°06'35"W	40.40'

CURVE	LENGTH	RADIUS	DELTA	CHORD BEARING	CHORD DISTANCE
C1	39.26	844.00	02°39'54"	N83°18'22"W	39.26
C2	7.12	2030.00	00°12'03"	N01°51'55"E	7.12



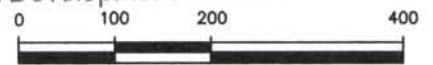
RENNER & ASSOCIATES, LLC.

616 SIXTH ST. * RAPID CITY, SD 57701
 PHONE: 605/721-7310 * FAX: 605/721-7313
 EMAIL: GARY@RENNERASSOC.COM

RECEIVED

JUN 08 2012

Rapid City Community Planning
 & Development Services



SCALE 1" = 200'