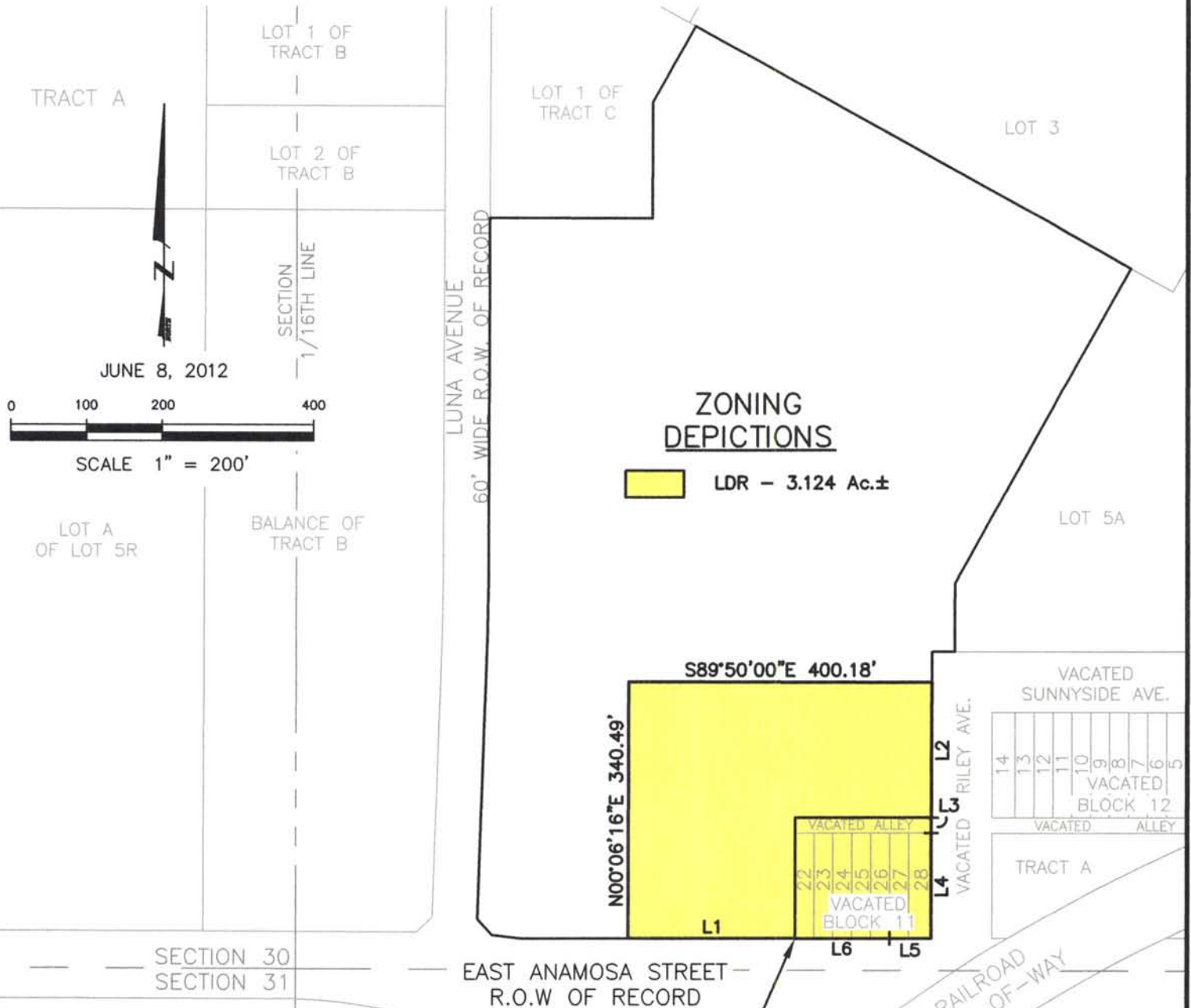


12RZ011

EXISTING ZONING MAP OF
 PORTION OF TRACT C, RUSHMORE CENTER,
 VACATED LOTS 22-28 OF BLOCK 11 OF PLAINVIEW 2ND ADDITION
 TO THE CITY OF RAPID CITY,
 AND VACATED ALLEY ADJACENT TO LOTS 22-28 OF BLOCK 11 OF
 PLAINVIEW 2ND ADDITION TO THE CITY OF RAPID CITY
 LOCATED IN THE SE1/4 OF THE SE1/4
 SECTION 30, T2N, R8E, BHM
 RAPID CITY, PENNINGTON COUNTY, SOUTH DAKOTA



ZONING
 DEPICTIONS

LDR - 3.124 Ac.±

RECEIVED

JUN 08 2012

Rapid City Community Planning
 & Development Services



RENNER & ASSOCIATES, LLC.

616 SIXTH ST. * RAPID CITY, SD 57701
 PHONE: 605/721-7310 * FAX: 605/721-7313
 EMAIL: GARY@RENNERASSOC.COM

LINE	BEARING	LENGTH
L1	N89°57'35"W	220.52'
L2	S00°07'24"W	179.55'
L3	S00°04'10"W	19.95'
L4	S00°01'07"W	140.13'
L5	N89°57'35"W	54.85'
L6	N89°56'53"W	124.97'