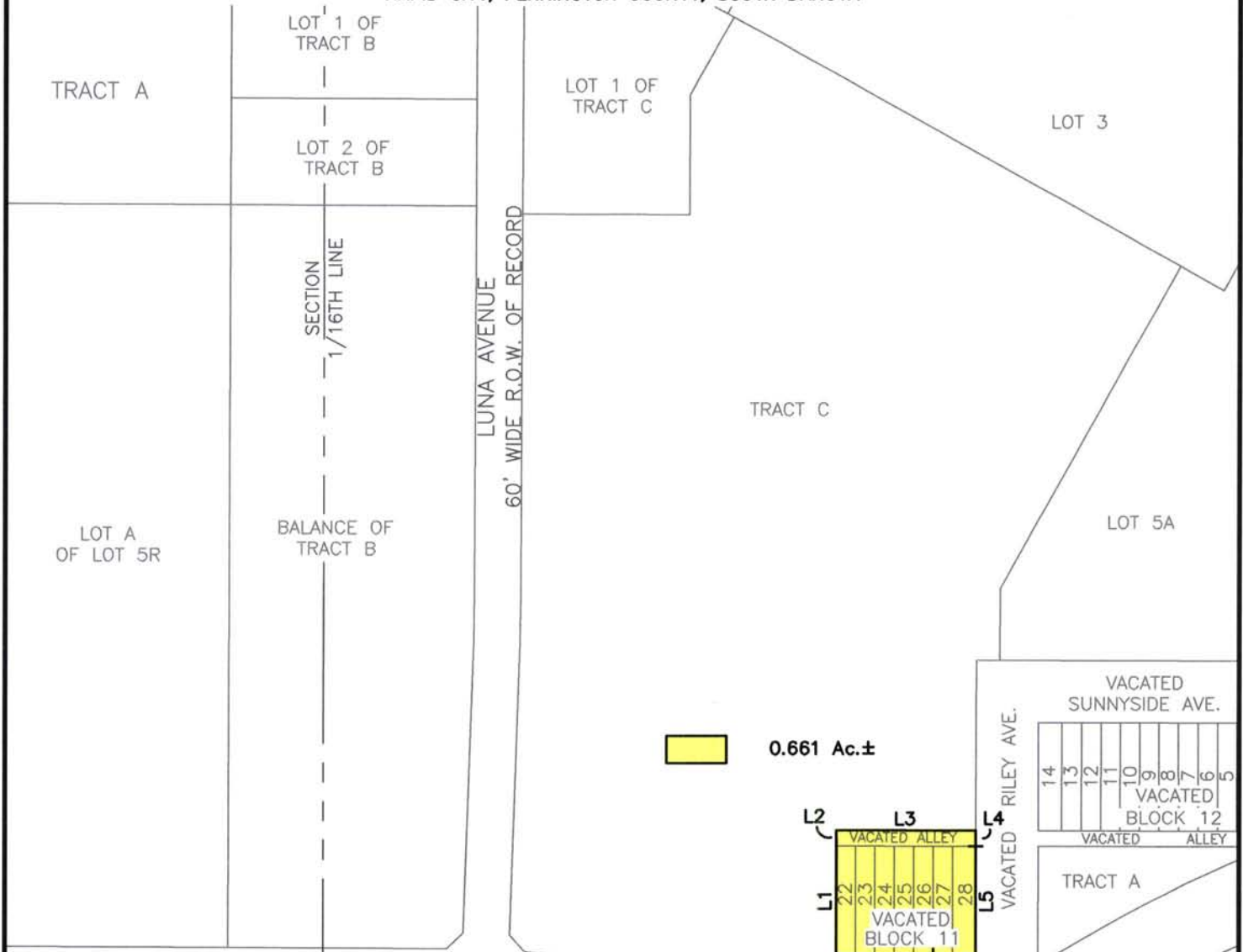


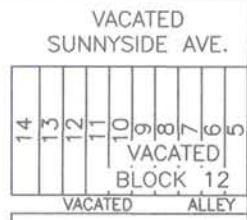
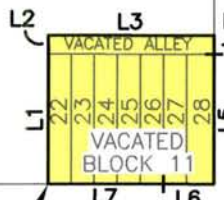
12CA003

COMPREHENSIVE PLAN AMENDMENT
VACATED LOTS 22-28 OF BLOCK 11 OF PLAINVIEW 2ND ADDITION
TO THE CITY OF RAPID CITY
AND VACATED ALLEY ADJACENT TO LOTS 22-28 OF BLOCK 11
OF PLAINVIEW 2ND ADDITION TO THE CITY OF RAPID CITY

LOCATED IN THE SE1/4 OF THE SE1/4
SECTION 30, T2N, R8E, BHM
RAPID CITY, PENNINGTON COUNTY, SOUTH DAKOTA



0.661 Ac.±



SECTION 30 EAST ANAMOSA STREET
SECTION 31 R.O.W OF RECORD

LINE	BEARING	LENGTH
L1	N00°04'53"E	140.32'
L2	N00°08'40"E	20.00'
L3	S89°52'39"E	179.64'
L4	S00°04'10"W	19.95'
L5	S00°01'07"W	140.13'
L6	N89°57'35"W	54.85'
L7	N89°56'53"W	124.97'

POINT OF BEGINNING

RAILROAD
RIGHT-OF-WAY

RECEIVED

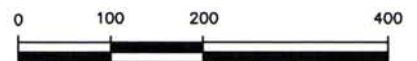
RENNER & ASSOCIATES, LLC.

616 SIXTH ST. * RAPID CITY, SD 57701
PHONE: 605/721-7310 * FAX: 605/721-7313
EMAIL: GARY@RENNERASSOCIATES.COM



RAPID CITY COMMUNITY PLANNING
& DEVELOPMENT SERVICES

JUNE 8, 2012



SCALE 1" = 200'