

- Roads
  - Not classified
  - Interstate
  - US Highway
  - SD Highway
  - County Highway
  - Main Road
  - Minor Arterial
  - Collector
  - Ramp
  - Paved Road
  - Unpaved Road
  - FS Unpaved Road
  - Driveway
  - Paved Alley
  - Unpaved Alley
  - Unimproved Road
  - Trail
  - Not yet coded
- Township/Section Lines
  - TOWNSHIP
  - SECTION
- Tax Parcels
- Lot Lines
  - <all other values>
  - Lot Line
  - Parcel Line
- County Line



**Location of lights**

57 lights spaced 60 ft. apart

located 10ft. North of Bike Path

Scale 1: 4,759

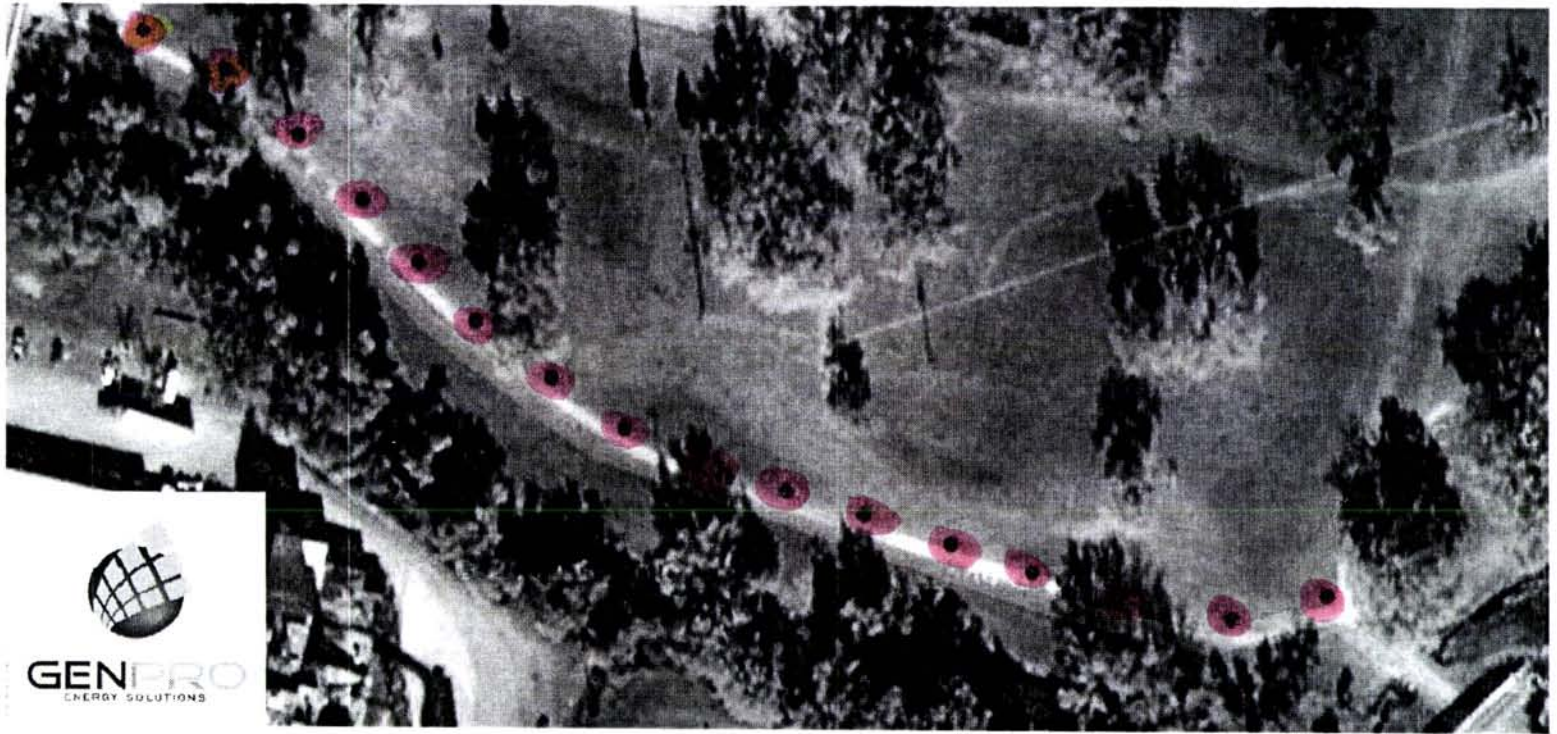
793.1 0 396.57 793.1 Feet

Map Notes:

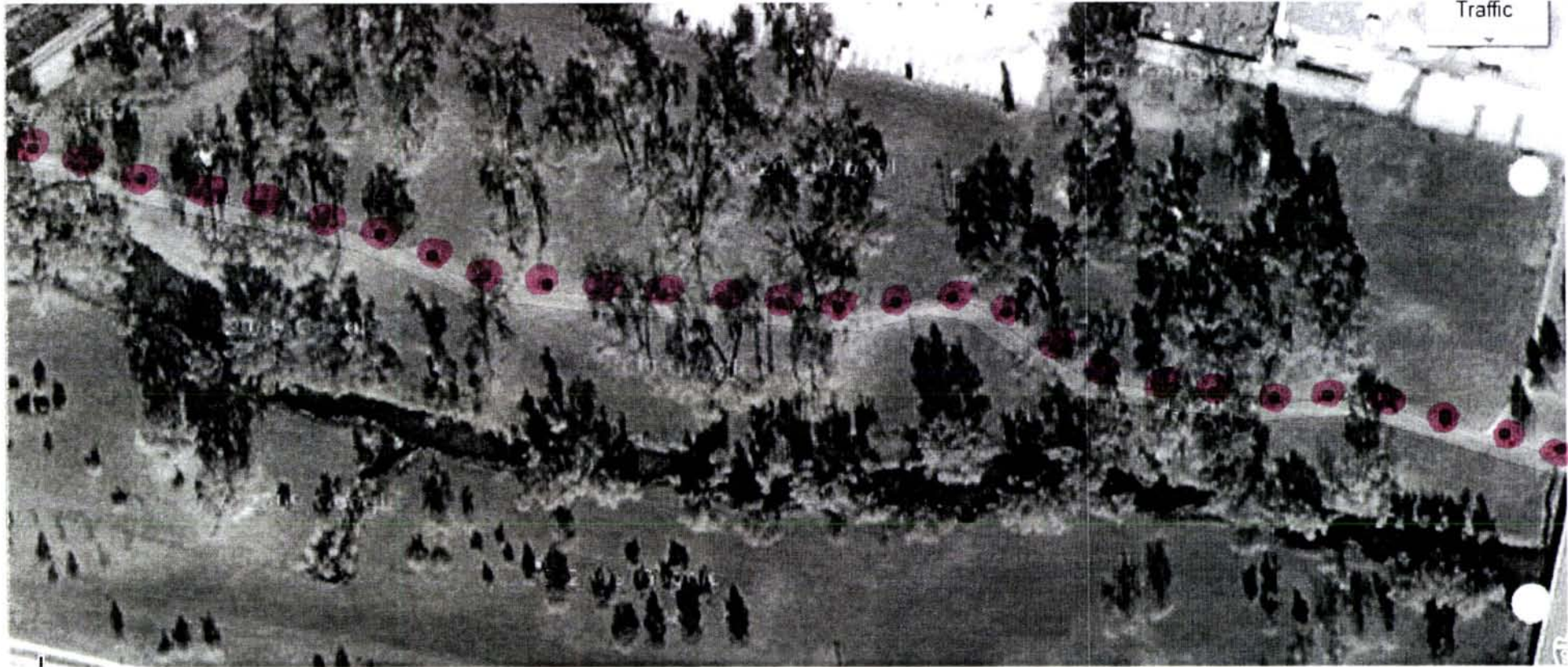
DISCLAIMER: This map is provided 'as is' without warranty of any representation to accuracy, timeliness, or completeness. The burden for determining accuracy, completeness, timeliness, merchantability, and fitness for or the appropriateness for use rests solely on the user. Rapid City and Pennington County make no warranties, express or implied, as to the use of the map. There are no implied warranties of merchantability or fitness for a particular purpose. The user acknowledges and accepts the limitations of the map, including the fact that the data used to create the map is dynamic and is in the constant state of maintenance, correction, and update. This document does not represent a legal survey of the land. There are no restrictions on the distribution of printed Rapid City/Pennington County maps, other than the City of Rapid City copyright/credit notice must be legible on the print. The user agrees to recognize and honor in perpetuity the copyrights and other proprietary claims for the map(s) established or produced by the City of Rapid City or the vendors furnishing said items to the City of Rapid City.

# Solar Bike Path Lighting

Lights to be spaced approximately 60' apart for uniform light distribution. Lights will be mounted at a height of approximately 16'. This height will help to deter vandalism, while providing a path lighting look rather than street lighting. The beam angle of the light is 140 degrees. At the 16' height, the edge of the light will be approximately 40'. Spacing at 60' will allow for overlap to provide for very uniform light without having "islands of light". With system design, the batteries should last approximately 4 years. A service contract can be provided to change out the batteries.



12UR011



12UR011

