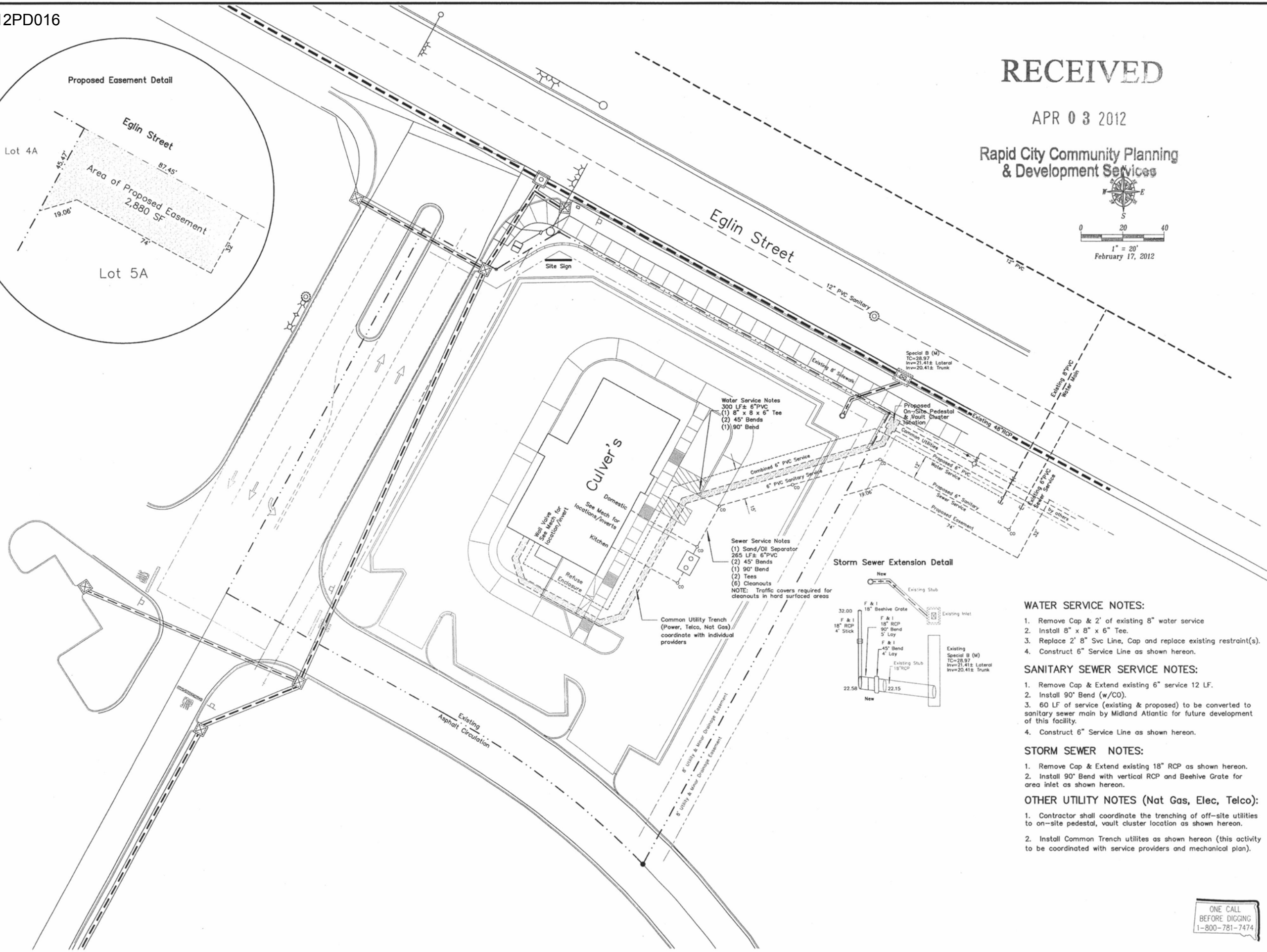
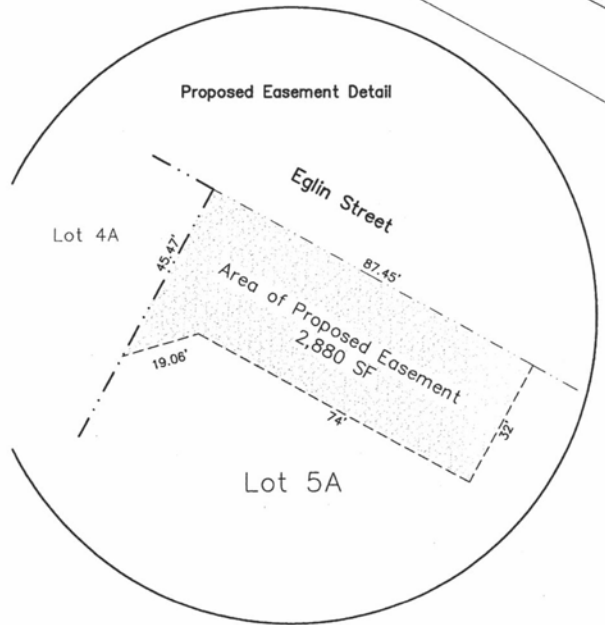
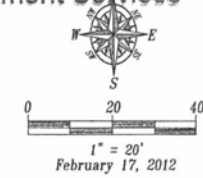


RECEIVED

APR 03 2012

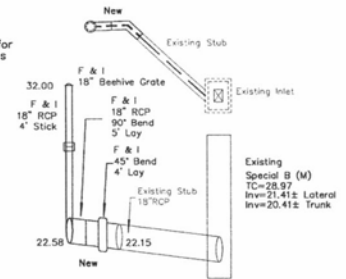
Rapid City Community Planning & Development Services



Water Service Notes
300 LF± 6" PVC
(1) 8" x 8" x 6" Tee
(2) 45° Bends
(1) 90° Bend

Sewer Service Notes
(1) Sand/Oil Separator
265 LF± 6" PVC
(2) 45° Bends
(1) 90° Bend
(2) Tees
(6) Cleanouts
NOTE: Traffic covers required for cleanouts in hard surfaced areas

Storm Sewer Extension Detail



WATER SERVICE NOTES:

- 1. Remove Cap & 2' of existing 8" water service
- 2. Install 8" x 8" x 6" Tee.
- 3. Replace 2' 8" Svc Line, Cap and replace existing restraint(s).
- 4. Construct 6" Service Line as shown hereon.

SANITARY SEWER SERVICE NOTES:

- 1. Remove Cap & Extend existing 6" service 12 LF.
- 2. Install 90° Bend (w/CO).
- 3. 60 LF of service (existing & proposed) to be converted to sanitary sewer main by Midland Atlantic for future development of this facility.
- 4. Construct 6" Service Line as shown hereon.

STORM SEWER NOTES:

- 1. Remove Cap & Extend existing 18" RCP as shown hereon.
- 2. Install 90° Bend with vertical RCP and Beehive Grate for area inlet as shown hereon.

OTHER UTILITY NOTES (Nat Gas, Elec, Telco):

- 1. Contractor shall coordinate the trenching of off-site utilities to on-site pedestal, vault cluster location as shown hereon.
- 2. Install Common Trench utilities as shown hereon (this activity to be coordinated with service providers and mechanical plan).

Fisk Land Surveying & Consulting Engineers, Inc.
1022 Main Street - P.O. Box 8154
Rapid City, South Dakota 57709
(605) 348-1538 (ph) (605) 341-1112 (fx)
fisk@midconetwork.com



The information hereon is copywritten material, and specific to the date, client and purpose as stated. No warranty or guarantee is expressed or implied to any party, for any other purpose at any time except as stated.

Site Plan
for Proposed Culver's Restaurant
Lot 4A of Block 2 of
Rushmore Crossing Subdivision
Rapid City, Pennington County, South Dakota

Surveyed by: ML
Date: 1/17/12
Drawn by: RWF
Date: 1/25/12
Checked by: WF

Revisions
Swr, Wtr - 3/14/12

Project No.
12-01-03

Utility Plan

