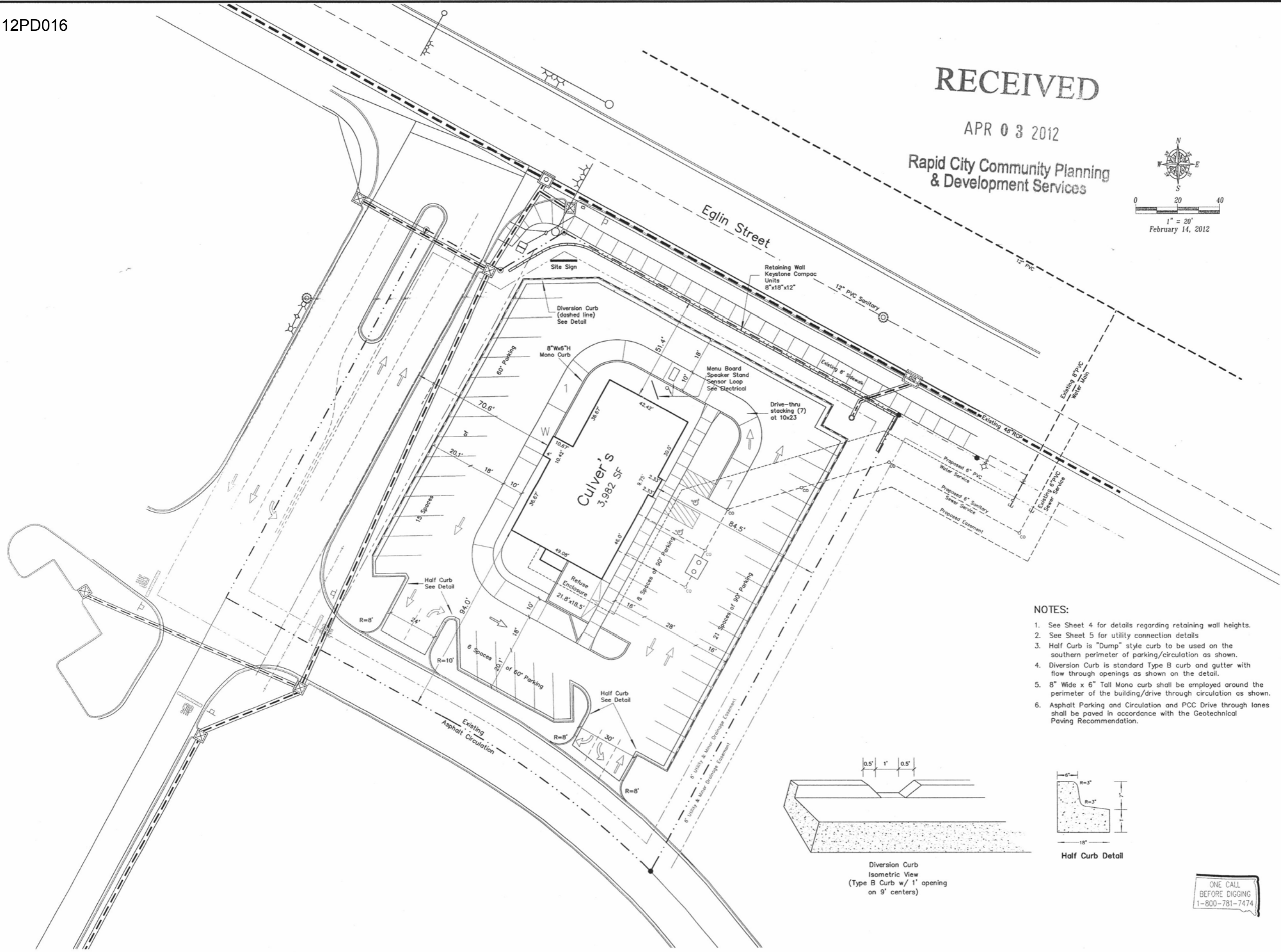
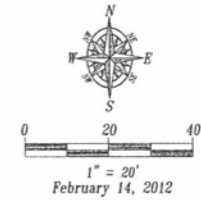


RECEIVED

APR 03 2012

Rapid City Community Planning & Development Services



Fisk Land Surveying & Consulting Engineers, Inc. 1022 Main Street - P.O. Box 8154 Rapid City, South Dakota 57709 (605) 348-1538 (ph) (605) 341-1112 (fx) fiskis@midconetwork.com

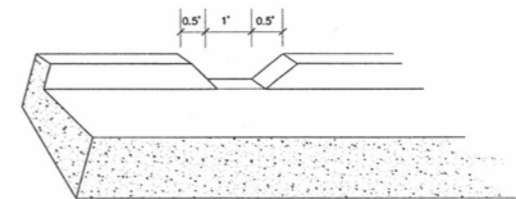


The information herein is copyrighted material, and specific to the date, client and purpose as stated. No warranty or guarantee is expressed or implied to any party, for any other purpose at any time except as stated.

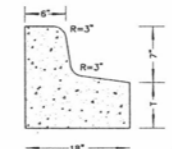
Site Plan for Proposed Culver's Restaurant for Lot 4A of Block 2 of Rushmore Crossing Subdivision Rapid City, Pennington County, South Dakota

NOTES:

- 1. See Sheet 4 for details regarding retaining wall heights.
2. See Sheet 5 for utility connection details
3. Half Curb is "Dump" style curb to be used on the southern perimeter of parking/circulation as shown.
4. Diversion Curb is standard Type B curb and gutter with flow through openings as shown on the detail.
5. 8" Wide x 6" Tall Mono curb shall be employed around the perimeter of the building/drive through circulation as shown.
6. Asphalt Parking and Circulation and PCC Drive through lanes shall be paved in accordance with the Geotechnical Paving Recommendation.



Diversion Curb Isometric View (Type B Curb w/ 1' opening on 9' centers)



Half Curb Detail



Table with project metadata: Surveyed by: ML, Date: 1/17/12, Drawn by: RWF, Date: 1/25/12, Checked by: WF, Revisions: Swr, Wtr - 3/14/12

Project No. 12-01-03 Proposed Site Plan