

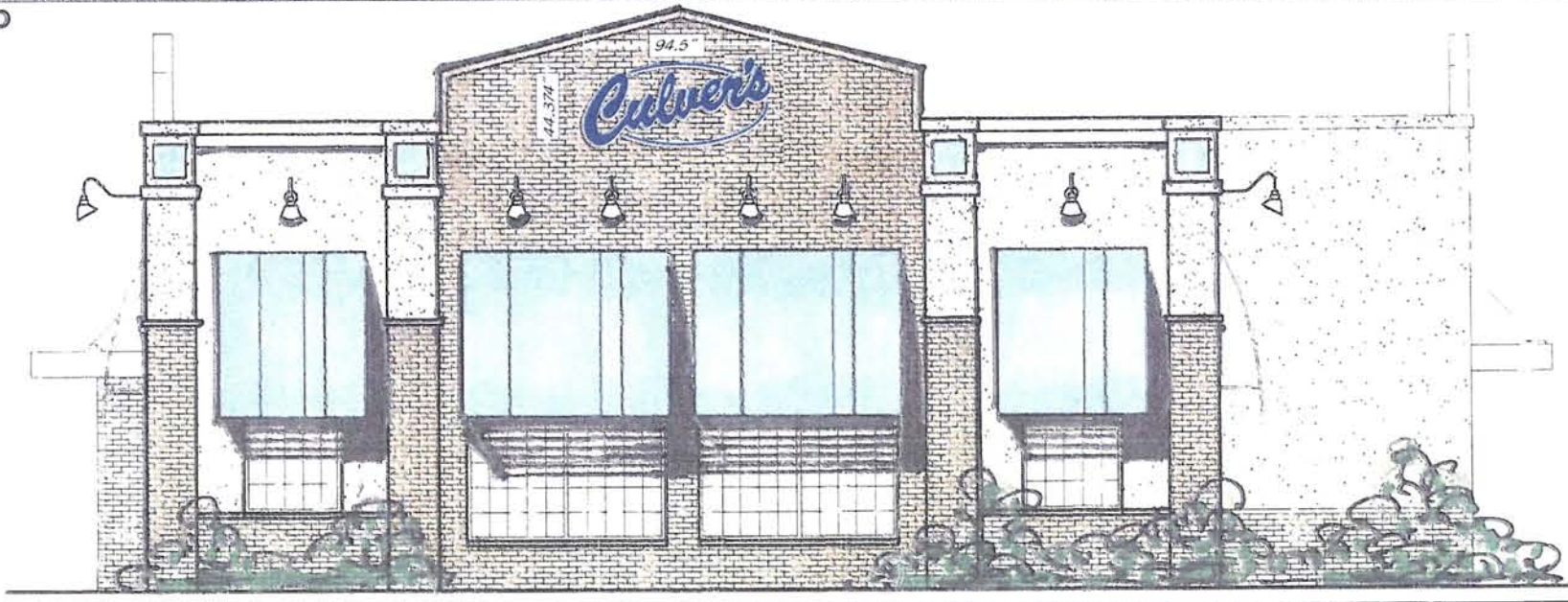


NORTH & SOUTH ELEVATIONS OPTION 3

RAPID CITY, SD

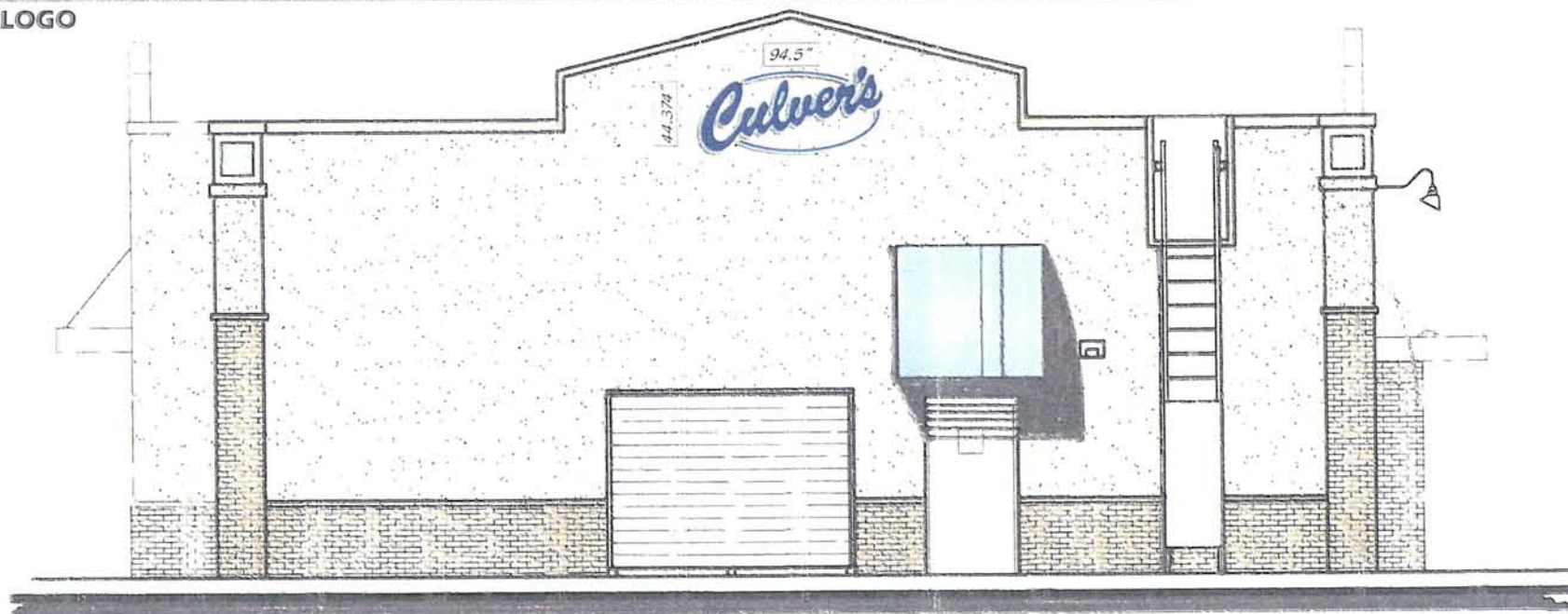
NORTH ELEVATION - NTS

8" SCRIPT LOGO



SOUTH ELEVATION - NTS

8" SCRIPT LOGO



FILE PATH: ART 2012/1ST QUARTER/CULVERS/RAPID CITY

*SCALE AND COLORS NOT REPRESENTATIVE FROM EMAIL ATTACHMENTS.
*ALL MEASUREMENTS ARE APPROXIMATE.

CLIENT

CULVER'S - RAPID CITY

SALESPERSON

MARK WESSELL

DATE

3/20/2012

SCALE

NTS

AO #

14378

DESIGNED BY

J WILSON

REVISION HISTORY

- NSEO1 - 2/23/12 - 48" OVAL
- NSEO2 - 2/23/12 - 8" SCRIPT
- NSEO3 - 3/20/12 - 8" SCRIPT BLUE
- NSEO3 - 3/21/12 - LOWERED S. SIGN

APPROVED BY

[Signature Line]

DATE

[Date Line]

This drawing is Copyrighted material, it remains the property of Springfield Sign & Neon unless otherwise agreed upon in writing. It is unlawful to use this drawing for bidding purposes, nor can it be reproduced, copied or used in the production of a sign without written permission from Springfield Sign & Neon, Inc.

This is an artistic rendition and final colors / sizes may vary from that depicted herein.

RECEIVED

APR 03 2012

Rapid City Community Planning & Development Services



BUILDING IMAGES THAT BUILD BUSINESS



EAST & WEST ELEVATIONS OPTION 3

EAST ELEVATION - NTS

8" SCRIPT LOGO



EAST ELEVATION - NTS

8" SCRIPT LOGO



FILE PATH: ART 2012/1ST QUARTER/CULVERS/RAPID CITY

*SCALE AND COLORS NOT REPRESENTATIVE FROM EMAIL ATTACHMENTS.
*ALL MEASUREMENTS ARE APPROXIMATE.

CLIENT

CULVER'S - RAPID CITY

SALESPERSON

MARK WESSELL

DESIGNED BY

J WILSON

REVISION HISTORY

- EWEO1-2/23/12 - 48" OVAL
- EWEO2-2/23/12 - 8" SCRIPT
- EWEO3-3/20/12 - 8" SCRIPT BLUE

DATE

3/20/2012

SCALE

NTS

AO

14378

APPROVED BY

[Empty field]

DATE

[Empty field]

This drawing is Copyrighted material, it remains the property of Springfield Sign & Neon unless otherwise agreed upon in writing. It is unlawful to use this drawing for bidding purposes, nor can it be reproduced, copied or used in the production of a sign without written permission from Springfield Sign & Neon, Inc.

This is an artistic rendition and final colors / sizes may vary from that depicted herein.

WWW.SIGNHIT.COM



RECEIVED

APR 03 2012

Rapid City Community Planning & Development Services



MONUMENT SIGN WITH MANUAL COPY BOARD

RAPID CITY, SD

PART# MN-48-MAN-RAPID CITY-CUST

SIGN SPECIFICATIONS

EXTERIOR: MATTHEWS N202 WHITE OR EQUIVALENT
 GRAPHICS & COLOR SPECIFICATIONS
 COLOR PMS 3M
 BLUE 294C VQ109041

CABINET:
 THERMOFORMED PAN OVER FACE

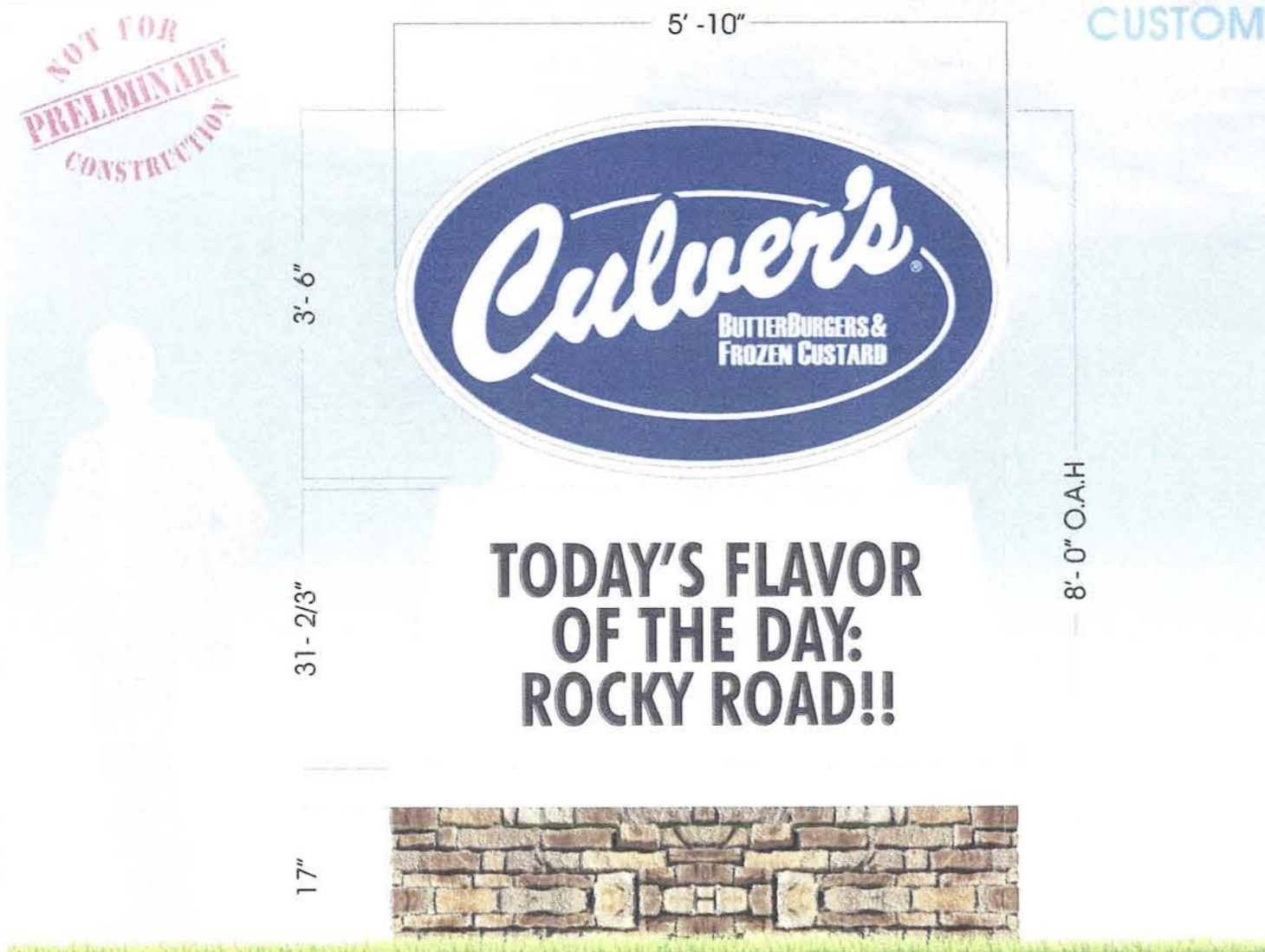
COPY BOARD:
 INTERNALLY ILLUMINATED
 FACE SIZE: 31-2/3" X 72"

STONE:
 PRAIRIE BLUFF 50/50 BLEND
 NEWBERRY/LANIER
 BOULDER CREEK MFG.

NOTE: MASONRY BASE PROVIDED BY OTHERS & IS TO MATCH BUILDING EXTERIOR FACADE.

NOT FOR
 PRELIMINARY
 CONSTRUCTION

CUSTOM



FILE PATH: ART/CUSTOMER LOGOS & SPECS/CULVERS/MONUMENT SIGNS

*SCALE AND COLORS NOT REPRESENTATIVE FROM EMAIL ATTACHMENTS.
 *ALL MEASUREMENTS ARE APPROXIMATE.

CLIENT	SALESPERSON	DESIGNED BY	REVISION HISTORY	
CULVER'S	MARK WESSELL	J WILSON		
DATE	SCALE	AO #		
2/15/2012	3/8"= 1'	13853		

This drawing is Copyrighted material, it remains the property of Springfield Sign & Neon unless otherwise agreed upon in writing. It is unlawful to use this drawing for bidding purposes, nor can it be reproduced, copied or used in the production of a sign without written permission from Springfield Sign & Neon, Inc.

This is an artistic rendition and final colors / sizes may vary from that depicted herein.

WWW.SIGNHIT.COM

RECEIVED

APR 03 2012

Rapid City Community Planning & Development Services

