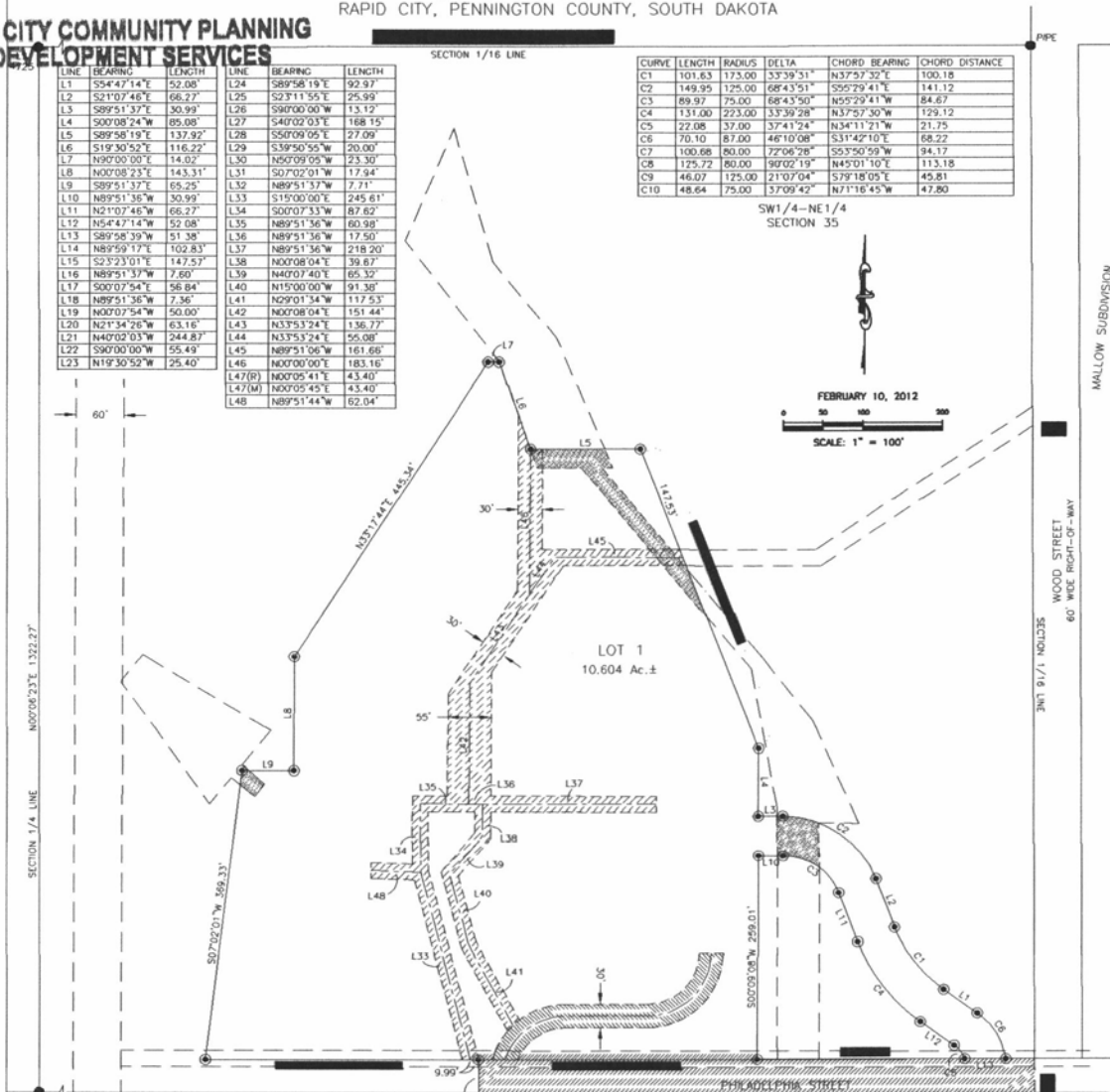


PLAT OF
LOT 1 OF
FOUNDERS PARK NORTH SUBDIVISION
formerly a Portion of the SW1/4 of the NE1/4 of Section 35, T2N, R7E, B.H.M.)
LOCATED IN THE SW1/4 OF THE NE1/4,
SECTION 35, T2N, R7E, BHM
RAPID CITY, PENNINGTON COUNTY, SOUTH DAKOTA

**RAPID CITY COMMUNITY PLANNING
& DEVELOPMENT SERVICES**

LINE	BEARING	LENGTH	LINE	BEARING	LENGTH
L1	S54°47'14"E	52.08'	L24	S89°58'19"E	92.97'
L2	S21°07'46"E	66.27'	L25	S23°11'55"E	25.99'
L3	S89°51'37"E	30.99'	L26	S90°00'00"W	13.12'
L4	S00°08'24"W	85.08'	L27	S40°02'03"E	188.15'
L5	S89°58'19"E	137.92'	L28	S50°09'05"E	27.09'
L6	S19°30'52"E	116.22'	L29	S39°50'55"W	20.00'
L7	N90°00'00"E	14.02'	L30	N50°09'05"W	23.30'
L8	N00°08'23"E	143.31'	L31	S07°02'01"W	17.94'
L9	S89°51'37"E	65.25'	L32	N89°51'37"W	7.71'
L10	N89°51'36"W	30.99'	L33	S15°00'00"E	245.61'
L11	N21°07'46"W	66.27'	L34	S00°07'33"W	87.62'
L12	N54°47'14"W	52.08'	L35	N89°51'36"W	60.98'
L13	S89°58'39"W	51.38'	L36	N89°51'36"W	17.50'
L14	N89°59'17"E	102.83'	L37	N89°51'36"W	218.20'
L15	S23°23'01"E	147.57'	L38	N00°08'04"E	39.67'
L16	N89°51'37"W	7.60'	L39	N40°07'40"E	65.32'
L17	S00°07'54"E	56.84'	L40	N15°00'00"W	91.36'
L18	N89°51'36"W	7.36'	L41	N09°01'34"W	117.53'
L19	N00°07'54"W	50.00'	L42	N00°08'04"E	151.44'
L20	N21°34'26"W	63.16'	L43	N33°53'24"E	136.77'
L21	N40°02'03"W	244.87'	L44	N33°53'24"E	55.08'
L22	S80°00'00"W	55.49'	L45	N89°51'36"W	161.66'
L23	N19°30'52"W	25.40'	L46	N00°00'00"E	183.16'
			L47(R)	N00°05'41"E	43.40'
			L47(M)	N00°05'45"E	43.40'
			L48	N89°51'44"W	62.04'

CURVE	LENGTH	RADIUS	DELTA	CHORD BEARING	CHORD DISTANCE
C1	101.63	173.00	33°39'51"	N37°57'32"E	100.18
C2	149.95	125.00	68°43'51"	S55°29'41"E	141.12
C3	89.97	75.00	68°43'50"	N55°29'41"W	84.67
C4	131.00	223.00	33°39'28"	N37°57'30"W	129.12
C5	22.08	37.00	37°41'24"	N34°11'21"W	21.75
C6	70.10	87.00	46°10'08"	S31°42'10"E	68.22
C7	100.68	80.00	72°06'28"	S5°50'59"W	94.17
C8	125.72	80.00	90°02'19"	N45°01'10"E	113.18
C9	46.07	125.00	21°07'04"	S79°18'05"E	45.81
C10	48.64	75.00	37°09'42"	N77°16'45"W	47.60



NOTES:
 (C) Denotes set 5/8" rebar with survey cap marked "Renner - Assoc. 9213"
 (●) Denotes Found Survey Monument, as noted.
 (R) Denotes Recorded in previous plat or description.
 (M) Denotes Measured in this survey.
 Basis of Bearings: Geodetic North as determined by Global Positioning System, (GPS) WGS 84.



UTILITY AND MINOR DRAINAGE EASEMENTS:
 5' ON THE INTERIOR SIDES OF ALL LOT LINES.
 ANY MAJOR DRAINAGE EASEMENT SHOWN HEREON SHALL BE KEPT FREE OF ALL OBSTRUCTIONS INCLUDING BUT NOT LIMITED TO BUILDINGS, WALLS, FENCES, HEDGES, TREES AND SHRUBS. THESE EASEMENTS GRANT TO ALL PUBLIC AUTHORITIES THE RIGHT TO CONSTRUCT, OPERATE, MAINTAIN, INSPECT, AND REPAIR SUCH IMPROVEMENTS AND STRUCTURES AS IT DEEMS EXPEDIENT TO FACILITATE DRAINAGE FROM ANY SOURCE.
 THE SIDELINES OF EASEMENTS ARE TO BE LENGTHENED OR SHORTENED TO CONFORM TO EASEMENT LINES, AND/OR PROPERTY LINES.

