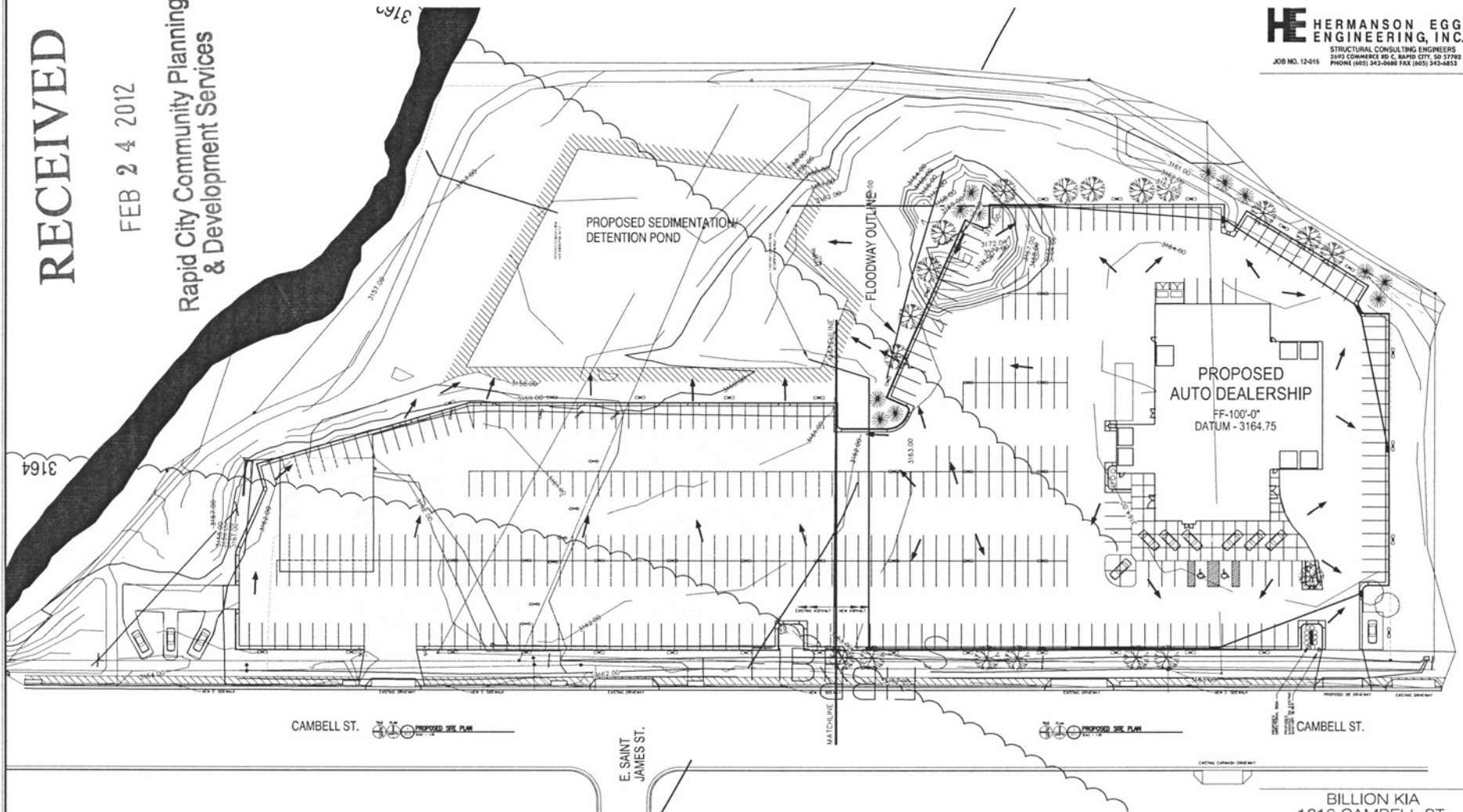


RECEIVED

FEB 24 2012

Rapid City Community Planning  
& Development Services

**HE** HERMANSON EGGE  
ENGINEERING, INC.  
STRUCTURAL CONSULTING ENGINEERS  
2093 COMMERCE RD. C. RAPID CITY, SD 57702  
JOB NO. 12-015 PHONE (605) 343-0060 FAX (605) 343-0033



**BILLION KIA**  
1316 CAMPELL ST.  
LOT 3 NW 1/4 OF SW 1/4 OF SECT. 6 AND  
TRACT 5 OF BRADSKY SUBD. NO. 2  
RAPID CITY, PENNINGTON COUNTY, SOUTH DAKOTA

PROJECT NO. 12-015 DRAWING NO.

DATE: 2/24/12  
SCALE:  
If this drawing is not 24" x 36" it is a reduced print.