

**GENERAL PLANTING NOTES & SPECIFICATIONS**

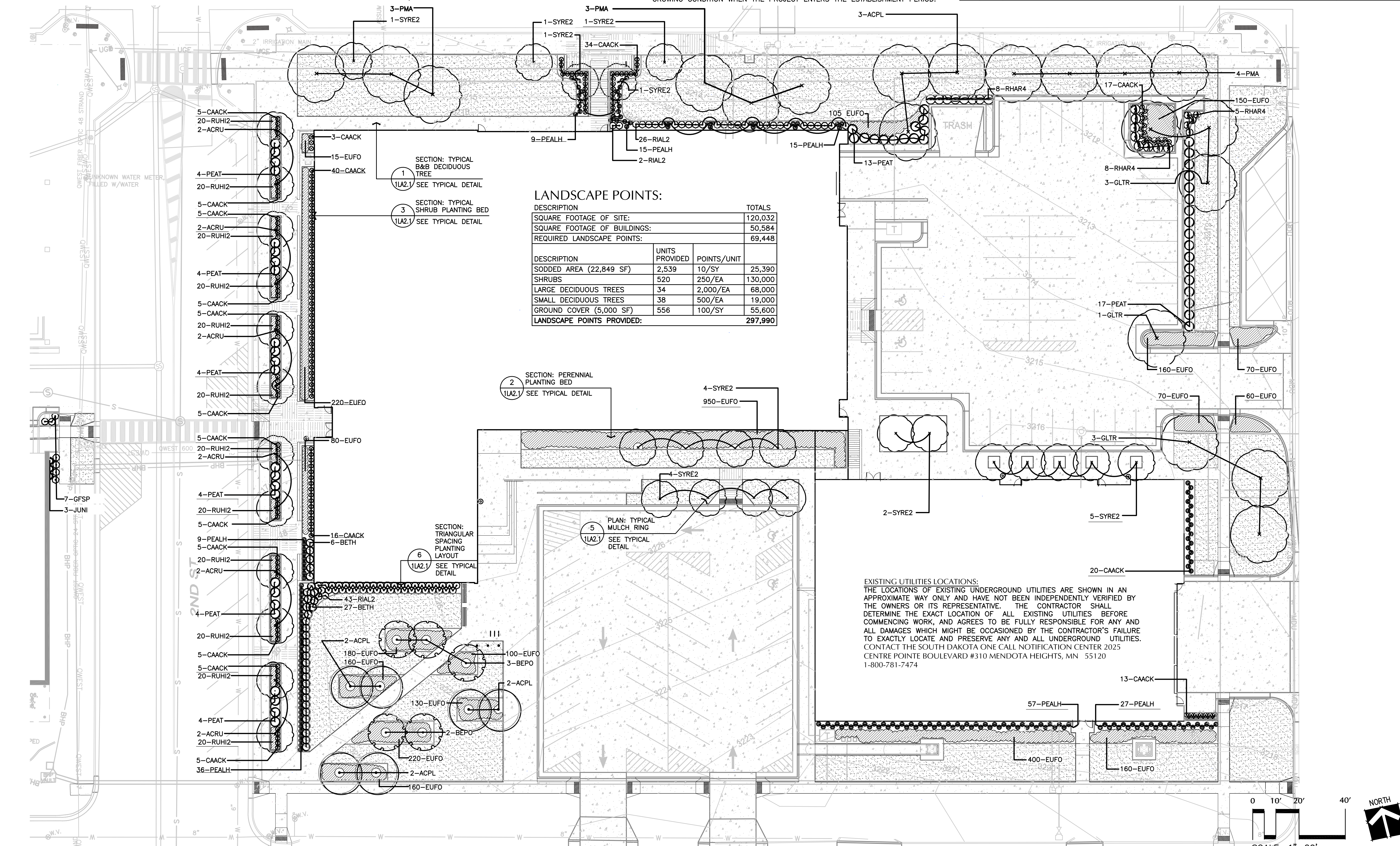
- PLANTING SEASONS SHALL BE FROM APRIL 15-JUNE 15 & FROM SEPTEMBER 1 TO NOVEMBER 1, UNLESS OTHERWISE COORDINATED. EXCEPTIONS SHALL BE COORDINATED WITH THE LANDSCAPE ARCHITECT & OWNER.
- CONTRACTOR SHALL LOCATE AND PROTECT ALL EXISTING & NEW UTILITIES. CONTRACTOR SHALL REPAIR OR REPLACE ANY DAMAGED UTILITIES AT NO COST TO OWNER. CONTRACTOR SHALL COORDINATE WITH GENERAL CONTRACTOR PRIOR TO DIGGING TO VERIFY SAFE DIGGING LOCATIONS.
- ALL PLANT MATERIAL SHALL CONFORM TO THE GUIDELINES ESTABLISHED BY THE CURRENT AMERICAN STANDARD FOR NURSERY STOCK, PUBLISHED BY THE AMERICAN ASSOCIATION OF NURSERYMEN OR EQUIVALENT. ALL TREES, SHRUBS, GROUND COVER AND PERENNIALS SHALL BE NURSERY GROWN FOR ATLEAST (1) YEAR IN A NURSERY LOCATED WITHIN USDA HARDINESS ZONES 1-5.
- ALL TREE AND SHRUB LOCATIONS SHALL BE STAKED BY CONTRACTOR AND APPROVED BY PROJECT LANDSCAPE ARCHITECT.
- ALL PLANTS SHALL BEAR THE SAME RELATIONSHIP TO FINISHED GRADE AS THE PLANT'S ORIGINAL GRADE BEFORE DIGGING.
- ALL PLANTS & STAKES SHALL BE SET PLUMB UNLESS OTHERWISE SPECIFIED.
- ALL PLANTS SHALL BE INSTALLED IN ACCORDANCE WITH ALL DRAWINGS AND SPECIFICATIONS.
- ALL SHRUB BEDS SHALL RECEIVE 4" DEPTH MINERAL MULCH-SEE FINISH PLAN. TREES IN LAWN AREAS ARE TO RECEIVE A 4"-0" DIA. SHREDDED CEDAR MULCH RING WITH A MINIMUM DEPTH OF 4". MULCH SHALL BE INSTALLED IMMEDIATELY UPON PLANTING TREE. FORM EARTH SAUCER AROUND BASE OF TREE PER DETAIL PRIOR TO PLACING CEDAR MULCH. INSTALL PLANTING MIX IN PIT AND AS BACKFILL. SEE PLANTING SOIL MIX BELOW. TREES IN PLANTING BEDS (PEA

- GRAVEL MULCH AREAS) DO NOT INSTALL CEDAR MULCH. KEEP PEA GRAVEL ONE FOOT (12") AWAY FROM BASE OF TREE.
- CONTRACTOR SHALL PROVIDE 18" DEPTH PLANTING SOIL FOR ALL PLANTING AREAS. PLANTING SOIL SHALL CONSIST OF EXISTING ON-SITE SOIL WITH COMPOST. CO-COMPOST FROM THE RAPID CITY LANDFILL IS ACCEPTABLE AS COMPOST MATERIAL. MIX AT A RATE OF 1/3 COMPOST & 2/3 SCREENED EXISTING SOIL. MECHANICALLY MIX SOIL ONSITE, NOT IN THE PLANTING PIT.
- CONTRACTOR IS RESPONSIBLE FOR MAINTAINING HEALTH OF ALL PLANT MATERIAL INCLUDING TREES, SHRUBS, PERENNIALS AND SOD THROUGH FINAL ACCEPTANCE OF PROJECT AND THE ESTABLISHMENT PERIOD.
- PROVIDE WEED CONTROL BARRIER UNDER ALL AREAS THAT RECEIVE ROCK MULCH. APPROVED PRODUCTS: MIRAFIB/MIRASCAPE & TYPAR LANDSCAPE FABRIC (OR APPROVED EQUAL).
- THE CONTRACTOR SHALL PROVIDE A ONE (1) YEAR WARRANTY FOR ALL PLANT MATERIAL. WARRANTY PERIOD COMMENCES AT THE SUBSTANTIAL COMPLETION DATE. WARRANTY COVERS DEATH, UNSATISFACTORY GROWTH (EXCEPT FOR DEFECTS DUE TO LACK OF ADEQUATE MAINTENANCE, NEGLIGENCE OR ABUSE BY OWNER, ABNORMAL WEATHER CONDITIONS, UNUSUAL FOR WARRANTY PERIOD, OR INCIDENTS SUCH AS DAMAGE DUE TO VANDALISM, HAIL, FIRE, OWNER NEGLIGENCE OR OTHER CIRCUMSTANCES THAT ARE OUT OF THE CONTRACTOR'S CONTROL. WARRANTED REPLACEMENT PLANTS SHALL BE OF SAME SPECIES AND SIZE.
- REMOVE UNSATISFACTORY PLANT MATERIAL WITHIN (7) DAYS OF NOTIFICATION, UNLESS REQUIRED TO REPLACE PLANT IN THE FOLLOWING PLANTING SEASON.
- TREES SHALL BE WRAPPED WITH NURSERYMAN'S STANDARD CREPE TAPE NOT LESS THAN 4" WIDE, CONSISTING OF TWO LAYERS OF CRINKLED PAPER

- CEMENTED TOGETHER WITH BITUMINOUS MATERIAL.
- GUY/ANCHOR TREES IMMEDIATELY UPON PLANTING TREE.
- UPON COMPLETION OF WORK, CLEAN ADJACENT STREETS AND SITE PAVING OF DIRT AND DEBRIS ACCUMULATION.
- REMOVE ALL SURPLUS SOIL AND WASTE MATERIAL, INCLUDING EXCESS SUBSOIL, UNSUITABLE SOIL, TRASH, DEBRIS AND LEGALLY DISPOSE OF THESE ITEMS OFF OF THE OWNER'S PROPERTY.
- PAYMENT FOR LANDSCAPE WILL BE MADE ON A LUMP SUM BASIS. PROGRESS PAYMENTS SHALL BE MADE IN ACCORDANCE WITH A WELL-BALANCED, DETAILED PROGRAM OF PAYMENT APPORTIONING, PREPARED BY THE CONTRACTOR & SUBMITTED TO THE ENGINEER FOR APPROVAL. SUCH PAYMENT APPORTIONING MAY REQUIRE MODIFICATIONS DURING THE CONTRACT, AS DETERMINED BY THE ENGINEER.
- PROVIDE AND INSTALL SOD IN THE AREAS INDICATED ON THE PLANTING/FINISH PLANS. SOD SHALL BE A LOCALLY GROWN KENTUCKY BLUEGRASS BLEND AND BE SOIL BASED. CONTRACTOR SHALL SUBMIT A CERTIFICATION OF SOD FROM SOD VENDOR TO LANDSCAPE ARCHITECT INCLUDING THE COMPOSITION OF THE SOD.
- CONTRACTOR SHALL MAINTAIN ALL PLANTS DURING THE ESTABLISHMENT PERIOD. ESTABLISHMENT PERIOD WILL FOLLOW THE COMPLETION OF ALL PLANTING AND SEEDING SHALL EXTEND FOR A PERIOD OF THIRTY DAYS. THE ESTABLISHMENT PERIOD WILL NOT BEGIN UNTIL ALL OF THE FOLLOWING ITEMS OF WORK AS REQUIRED IN THE SPECIFICATIONS, THE SPECIAL PROVISIONS, AND THE PLANS HAVE BEEN PERFORMED INCLUDING PROPER INSTALLATION OF MATERIAL, WATERING, FERTILIZING AND SODDING. ALL PLANT MATERIAL SHALL BE IN VIABLE GROWING CONDITION WHEN THE PROJECT ENTERS THE ESTABLISHMENT PERIOD.

QTY	SYMBOL	COMMON NAME	BOTANICAL NAME	SIZE	COMMENTS
<b>LARGE DECIDUOUS TREES</b>					
9	ACPL	NORWAY MAPLE	ACER PLATANOIDES 'EMERALD QUEEN'	2 1/2" CAL.	B&B
6	GLTR	SHADEMASTER HONEYLOCUST	GLEDITSIA TRIACANTHOS VAR. 'INERMIS 'SHADEMASTER'	2 1/2" CAL.	B&B
10	PMA	PATMORE ASH	FRAXINUS PENNSYLVANICA 'PATMORE'	1 1/2-2" CAL.	B&B
<b>SMALL DECIDUOUS TREES</b>					
12	ACRU	AUTUMN SPIRE MAPLE	ACER RUBRUM 'AUTUMN SPIRE'	2 1/2" CAL.	B&B
20	SYRE2	JAPANESE TREE LILAC	SYRINGA RETICULATA	1 1/2-2" CAL.	B&B
5	BEPO	WHITE SPIRE BIRCH	BETULA POPULIFOLIA 'WHITE SPIRE'	2" CAL.	B&B
<b>DECIDUOUS SHRUBS</b>					
33	BETH	RED LEAF BARBERRY	BERBERIS THUNBERGII	#1 (1 GAL.)	SPACE PER PLAN
21	RHAR4	FRAGRANT SUMAC	RHUS AROMATICA AITON	#1 (1 GAL.)	SPACE PER PLAN
71	RIAL2	ALPINE CURRANT	RIBES ALPINUM	#1 (1 GAL.)	SPACE PER PLAN
7	GFSP	GOLDFLAME SPIREA	SPIRAEA X BUMALDA 'GOLDFLAME'	#1 (1 GAL.)	SPACE PER PLAN
<b>GRASSES</b>					
168	PEALH	HAMELN'S FOUNTAIN GRASS	PENNISETUM ALOPECUROIDES 'HAMELN'	#1 (1 GAL.)	SPACE PER PLAN
203	CAACK	FEATHER REED GRASS	CALAMAGROSTIS X ACUTIFLORA 'KARL FOERSTER'	#1 (1 GAL.)	SPACE PER PLAN
24	PEAT	RUSSIAN SAGE	PEROVSKIA ATRIPLICIFOLIA	#1 (1 GAL.)	SPACE PER PLAN
<b>PERENNIAL/ GROUND COVER</b>					
3390	EUFO	PURPLE WINTERCREEPER	EUONYMUS FORTUNEI 'COLORATUS'	#1 (1 GAL.)	15" O.C.
240	RUH12	BLACKEYED SUSAN	RUDBECKIA HIRTA L.	#1 (1 GAL.)	12" O.C.
3	JUNI	BROADMOOR JUNIPER	JUNIPERUS SABINA 'BROADMOOR'	#2 (2 GAL.)	SPACE PER PLAN

**LANDSCAPE PLANT MATERIAL LIST**



**fd**  
Fennell Design Inc.

PROJECT ARCHITECT:  
**FENNEL DESIGN INC.**  
201 MAIN ST, STE 201  
RAPID CITY, SD 57701  
CONTACT: GENE FENNEL  
P 605-716-0520

CIVIL ENGINEER:  
**celec ENGINEERING SERVICES, INC**  
1560 CONCOURSE DRIVE  
RAPID CITY, SD 57703  
CONTACT: TED SCHULTZ  
P 605-341-7800

MECHANICAL/ELECTRICAL ENGINEER:  
**SKYLINE ENGINEERING, LLC.**  
615 12TH STREET  
RAPID CITY, SD 57701  
CONTACT: GARY KUHL  
P 605-737-3800  
JAMIE STAMPE

LANDSCAPE:  
**WYSS ASSOCIATES, INC**  
768 6TH ST.  
RAPID CITY, SD 57701  
CONTACT: MARK JOBMAN  
P 605-348-2268

STRUCTURAL ENGINEER:  
**ALBERTSON ENGINEERING, INC.**  
3202 WEST MAIN ST, STE C  
RAPID CITY, SD 57702  
CONTACT: DAVID LEPPERT  
P 605-343-9606

REVISIONS:

DATE: 02/01/2012

PROJECT MANAGER: GENE FENNEL

PROJECT NUMBER: 11008 (FDI)

**Pennington County  
Campus Expansion**

SITE WORK  
PACKAGE #1

LANDSCAPE  
PLANTING PLAN

**1LA2.0**

SCALE: 1"=20'  
ORIGINAL SHEET SIZE = 24"x36"