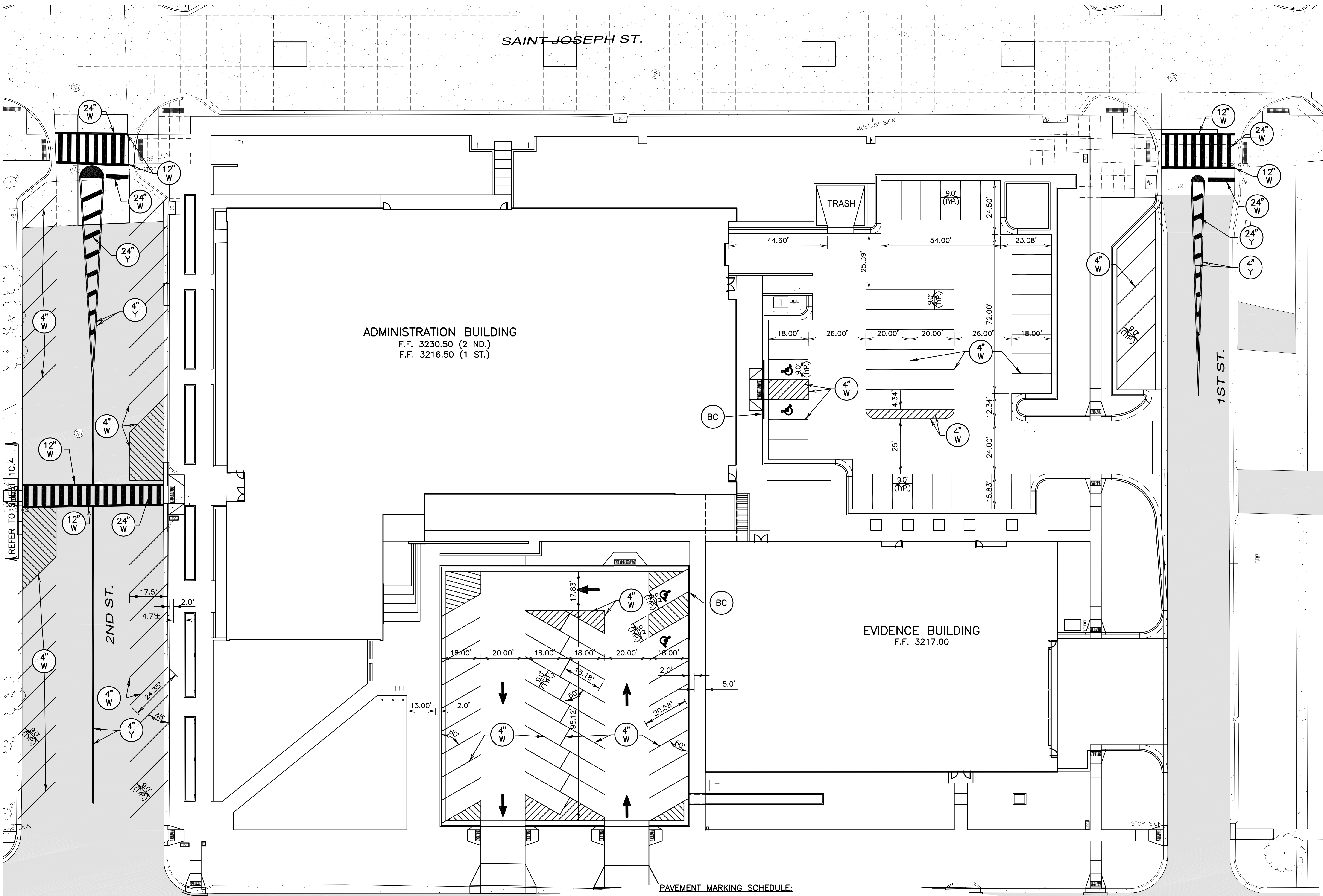


February 20, 2012 12:36:21 p.m.  
 Drawing: 10175 STRIPING PLAN.DWG (FOX) (\\MAIN-DATA\CETEC\PROJECTS & PROPOSALS\10175.01 PENN. CO. COURTHOUSE COMPLEX - SURVEY\DRAWINGS\PLANS)



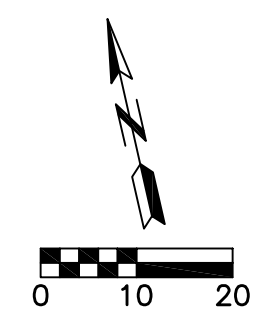
**ADMINISTRATION BUILDING**  
 F.F. 3230.50 (2 ND.)  
 F.F. 3216.50 (1 ST.)

**EVIDENCE BUILDING**  
 F.F. 3217.00

**PAVEMENT MARKING SCHEDULE:**

KEY	ITEM
	24" WIDE, WHITE, PAINT
	12" WIDE, WHITE, PAINT
	4" WIDE, WHITE, PAINT
	24" WIDE, YELLOW, PAINT
	4" WIDE, YELLOW, PAINT
	BLUE PAINTED CURB
	THROUGH LANE ARROW, WHITE, PAINT
	REMOVE EXISTING STRIPING
	ACCESSIBLE PARKING SYMBOL, WHITE, PAINT (BLUE BACK GROUND)

- NOTES:**
- ALL PARKING LOT AND STREET STRIPING, ARROWS, AND HANDICAP SYMBOLS SHALL COMPLY WITH THE CITY OF RAPID CITY SPECIFICATIONS AND STANDARD DETAILS. OWNER TO FURNISH AND INSTALL ACCESSIBLE PARKING SIGNS AND OTHER SITE SIGNAGE.
  - REMOVE AND RESET ALL SIGNS, SUCH AS STOP SIGNS, STREET SIGNS, ETC., AS NEEDED.



**ARCHITECTURAL TEAM:**

*fd* **ARC HITECTURE INTERNATIONAL**

---

**PROJECT ARCHITECT:**  
**FENNEL DESIGN INC.**  
 201 MAIN ST. STE 201  
 RAPID CITY, SD  
 CONTACT: GENE FENNEL  
 P 605-716-0520

---

**CIVIL ENGINEER:**  
**CETEC ENGINEERING SERVICES, INC.**  
 1560 CONCOURSE DRIVE  
 RAPID CITY, SD 57703  
 CONTACT: TED SCHULTZ  
 P 605-341-7800

---

**STRUCTURAL ENGINEER:**  
**ALBERTSON ENGINEERING, INC.**  
 3202 WEST MAIN SUITE C  
 RAPID CITY, SD 57702  
 CONTACT: DAVE LEPPERT  
 P 605-343-9606

---

**MECHANICAL/ELECTRICAL ENGINEER:**  
**SKYLINE ENGINEERING, LLC.**  
 615 12TH STREET  
 RAPID CITY, SD 57701  
 CONTACT: GARY KUHL  
 P 605-737-3800 JAMIE STAMPE

---

DATE: FEBRUARY 1, 2012

PROJECT MANAGER: TS

PROJECT NUMBER: 2010-027

**Pennington County  
 Campus Expansion**

Package 1 (Civil)

STRIPING PLAN

1C.14