

GENERAL PLANTING NOTES & SPECIFICATIONS

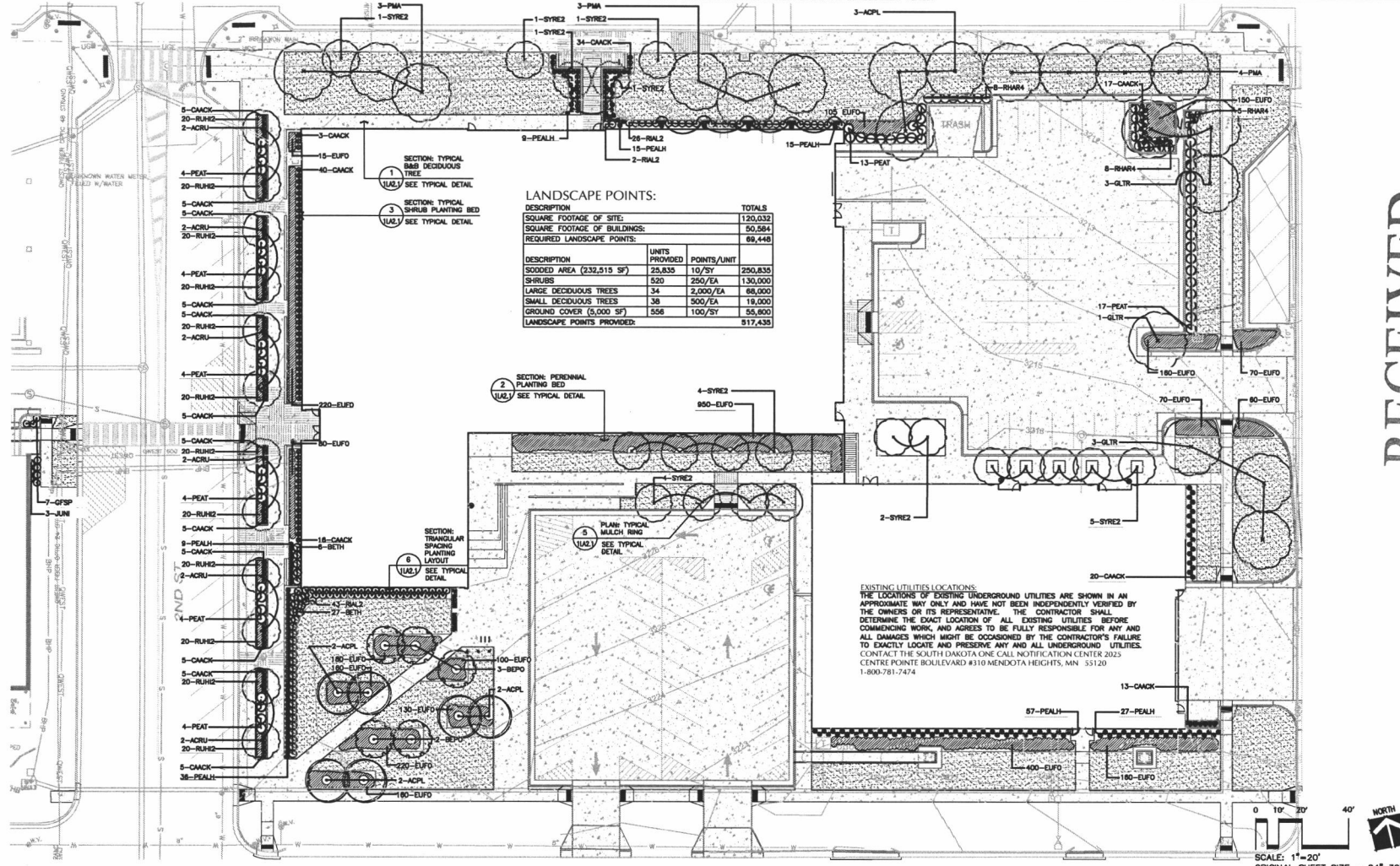
1. PLANTING SEASONS SHALL BE FROM APRIL 15- JUNE 15 & FROM SEPTEMBER 1 TO NOVEMBER 1, UNLESS OTHERWISE COORDINATED. EXCEPTIONS SHALL BE COORDINATED WITH THE LANDSCAPE ARCHITECT & OWNER.
2. CONTRACTOR SHALL LOCATE AND PROTECT ALL EXISTING & NEW UTILITIES. CONTRACTOR SHALL REPAIR OR REPLACE ANY DAMAGED UTILITIES AT NO COST TO OWNER. CONTRACTOR SHALL COORDINATE WITH GENERAL CONTRACTOR PRIOR TO DIGGING TO VERIFY SAFE DIGGING LOCATIONS.
3. ALL PLANT MATERIAL SHALL CONFORM TO THE GUIDELINES ESTABLISHED BY THE CURRENT AMERICAN STANDARD FOR NURSERY STOCK, PUBLISHED BY THE AMERICAN ASSOCIATION OF NURSERYMEN OR EQUIVALENT. ALL TREES, SHRUBS, GROUNDCOVER AND PERENNIALS SHALL BE NURSERY GROWN FOR ATLEAST (1) YEAR IN A NURSERY LOCATED WITHIN USDA HARDINESS ZONES 1-5.
4. ALL TREE AND SHRUB LOCATIONS SHALL BE STAKED BY CONTRACTOR AND APPROVED BY PROJECT LANDSCAPE ARCHITECT.
5. ALL TREES SHALL BEAR THE SAME RELATIONSHIP TO FINISHED GRADE AS ALL PLANTS & STAKES SHALL BE SET PLUMB UNLESS OTHERWISE SPECIFIED.
6. ALL PLANTS SHALL BE INSTALLED IN ACCORDANCE WITH ALL DRAWINGS AND SPECIFICATIONS.
7. ALL SHRUB BEDS SHALL RECEIVE 4" DEPTH MINERAL MULCH-SEE FINISH PLAN. TREES IN LAWN AREAS ARE TO RECEIVE A 4"-0" DIA. SHREDDED CEDAR MULCH RING WITH A MINIMUM DEPTH OF 4". MULCH SHALL BE INSTALLED IMMEDIATELY UPON PLANTING TREE. FORM EARTH SAUCER AROUND BASE OF TREE PER DETAIL PRIOR TO PLACING CEDAR MULCH. INSTALL PLANTING MIX IN PIT AND AS BACKFILL. SEE PLANTING SOIL MIX BELOW. TREES IN PLANTING BEDS (PEA

8. GRAVEL MULCH AREAS DO NOT INSTALL CEDAR MULCH. KEEP PEA GRAVEL ONE FOOT (12") AWAY FROM BASE OF TREE.
9. CONTRACTOR SHALL PROVIDE 18" DEPTH PLANTING SOIL FOR ALL PLANTING AREAS. PLANTING SOIL SHALL CONSIST OF EXISTING ON-SITE SOIL WITH COMPOST, CO-COMPOST FROM THE RAPID CITY LANDFILL IS ACCEPTABLE AS COMPOST MATERIAL. MIX AT A RATE OF 1/3 COMPOST & 2/3 SCREENED EXISTING SOIL, MECHANICALLY MIX SOIL ON-SITE, NOT IN THE PLANTING PIT.
10. CONTRACTOR IS RESPONSIBLE FOR MAINTAINING HEALTH OF ALL PLANT MATERIAL INCLUDING TREES, SHRUBS, PERENNIALS AND SOO THROUGH FINAL ACCEPTANCE OF PROJECT AND THE ESTABLISHMENT PERIOD.
11. PROVIDE WEED CONTROL BARRIER UNDER ALL AREAS THAT RECEIVE ROCK MULCH. APPROVED PRODUCTS: MIRAFIX/MIRASCAP & TYRAN LANDSCAPE FABRIC (OR APPROVED EQUAL).
12. THE CONTRACTOR SHALL PROVIDE A ONE (1) YEAR WARRANTY FOR ALL PLANT MATERIAL. WARRANTY PERIOD COMMENCES AT THE SUBSTANTIAL COMPLETION DATE. WARRANTY COVERS DEATH, UNSATISFACTORY GROWTH (EXCEPT FOR DEFECTS DUE TO LACK OF ADEQUATE MAINTENANCE, NEGLIGENCE OR ABUSE BY OWNER, ABNORMAL WEATHER CONDITIONS, UNUSUAL, FOR WARRANTY PERIOD, OR OTHER CIRCUMSTANCES THAT ARE OUT OF THE CONTRACTOR'S CONTROL. WARRANTED REPLACEMENT PLANTS SHALL BE OF SAME SPECIES AND SIZE.
13. REMOVE UNSATISFACTORY PLANT MATERIAL WITHIN (7) DAYS OF NOTIFICATION, UNLESS REQUIRED TO REPLACE PLANT IN THE FOLLOWING PLANTING SEASON.
14. TREES SHALL BE WRAPPED WITH NURSERYMAN'S STANDARD CRISPE TAPE NOT LESS THAN 4" WIDE, CONSISTING OF TWO LAYERS OF CRINKLED PAPER

15. CEMENTED TOGETHER WITH BITUMINOUS MATERIAL.
16. GUY/ANCHOR TREES IMMEDIATELY UPON PLANTING TREE.
17. UPON COMPLETION OF WORK, CLEAN ADJACENT STREETS AND SITE PAVING OF DIRT AND DEBRIS ACCUMULATION.
18. REMOVE ALL SURPLUS SOIL AND WASTE MATERIAL, INCLUDING EXCESS SUBSOIL, UNSUITABLE SOIL, TRUNKS, DEBRIS AND LEGALLY DISPOSE OF THESE ITEMS OFF OF THE OWNER'S PROPERTY.
19. PAYMENT FOR LANDSCAPE WILL BE MADE ON A LUMP SUM BASIS. PROGRESS PAYMENTS SHALL BE MADE IN ACCORDANCE WITH A WELL-BALANCED, DETAILED PROGRAM OF PAYMENT APPORTIONING, PREPARED BY THE CONTRACTOR & SUBMITTED TO THE ENGINEER FOR APPROVAL. SUCH PAYMENT APPORTIONING MAY REQUIRE MODIFICATIONS DURING THE CONTRACT, AS DETERMINED BY THE ENGINEER.
20. PROVIDE AND INSTALL SOO IN THE AREAS INDICATED ON THE PLANTING/FINISH PLANS. SOO SHALL BE A LOCALLY GROWN KENTUCKY BLUEGRASS BLEND AND BE PEAT MOSS BASED. CONTRACTOR SHALL SUBMIT A CERTIFICATION OF SOO FROM SOO VENDOR TO LANDSCAPE ARCHITECT INCLUDING THE COMPOSITION OF THE SOO.
21. CONTRACTOR SHALL MAINTAIN ALL PLANTS DURING THE ESTABLISHMENT PERIOD. ESTABLISHMENT PERIOD WILL FOLLOW THE COMPLETION OF ALL PLANTING AND SEEDING SHALL EXTEND FOR A PERIOD OF THIRTY DAYS. THE ESTABLISHMENT PERIOD WILL NOT BEGIN UNTIL ALL OF THE FOLLOWING ITEMS OF WORK AS REQUIRED IN THE SPECIFICATIONS, THE SPECIAL PROVISIONS, AND THE PLANS HAVE BEEN PERFORMED INCLUDING PROPER INSTALLATION OF MATERIAL, WATERING, FERTILIZING AND SOOING. ALL PLANT MATERIAL SHALL BE IN VISIBLE GROWING CONDITION WHEN THE PROJECT ENTERS THE ESTABLISHMENT PERIOD.

LANDSCAPE PLANT MATERIAL LIST

QTY	SYMBOL	COMMON NAME	BOTANICAL NAME	SIZE	COMMENTS
8	ACPL	NORWAY MAPLE	AKER FRAXINUS	26" CAL	BARB
8	GLTR	SMOKESHEDDER HONEYLOCUST	GLADSTONIA TRICHOCARPA	26" CAL	BARB
10	PMA	PATMORE ASH	FRAXINUS PENNSYLVANICA	18" CAL	BARB
SMALL DECIDUOUS TREES					
12	ACR1	AUTUMN SPICE MAPLE	AKER RUBRIFOLIA	26" CAL	BARB
20	STR2Z	JAPANESE TREE LILAC	SPIRINDA TRICHOCARPA	18" CAL	BARB
5	BEPO	WHITE SPICE BIRCH	BETULA POPULIFOLIA	2" CAL	BARB
DECIDUOUS SHRUBS					
33	BETH	RED LEAF BARBERY	ADONIDES TRIMORPH	#1 (1 GAL)	SPACE PER PLAN
21	RW4M	FRAGRANT SUMAC	RUBUS AROMATICUS	#1 (1 GAL)	SPACE PER PLAN
71	RA12	ALPINE CURRANT	RIBES ALPINUM	#1 (1 GAL)	SPACE PER PLAN
7	QFSP	GOLDFLAME SPIREA	SPIRINDA X BRANLINA	#1 (1 GAL)	SPACE PER PLAN
GRASSES					
186	PEALH	HAMELI'S FOUNTAIN GRASS	PENANSETUM ALOPECUROIDES	#1 (1 GAL)	SPACE PER PLAN
203	CMACK	FEATHER REED GRASS	CALAMAGROSTIS X ACUTIFLORA	#1 (1 GAL)	SPACE PER PLAN
24	PEAT	RUSSIAN SAGE	PEROVSKIA ATROPURPUREA	#1 (1 GAL)	SPACE PER PLAN
PERENNIAL / GROUNDCOVER					
330	ELFD	PURPLE WINTERCREPER	ELIOMYRUS FORTUNEI	#1 (1 GAL)	15" O.C.
240	RL42	BLACKEYED SUSAN	RUBROECKIA HYPERICUM	#1 (1 GAL)	12" O.C.
3	JUN1	BROADMOOR JUNIPER	JUNIPERUS SABINA	#2 (2 GAL)	SPACE PER PLAN



LANDSCAPE POINTS:

DESCRIPTION	UNITS PROVIDED	POINTS/UNIT	TOTALS
SQUARED FOOTAGE OF SITE:			120,032
SQUARED FOOTAGE OF BUILDINGS:			60,584
REQUIRED LANDSCAPE POINTS:			69,448
SOODED AREA (232,513 SF)			
SOODED AREA	23,835	10/ST	238,350
SHRUBS	520	250/EA	130,000
LARGE DECIDUOUS TREES	34	2,000/EA	68,000
SMALL DECIDUOUS TREES	38	500/EA	19,000
GROUND COVER (5,000 SF)	558	100/ST	55,800
LANDSCAPE POINTS PROVIDED:			617,435

EXISTING UTILITIES LOCATIONS:
 THE LOCATIONS OF EXISTING UNDERGROUND UTILITIES ARE SHOWN IN AN APPROXIMATE WAY ONLY AND HAVE NOT BEEN INDEPENDENTLY VERIFIED BY THE OWNERS OR ITS REPRESENTATIVE. THE CONTRACTOR SHALL DETERMINE THE EXACT LOCATION OF EXISTING UTILITIES BEFORE COMMENCING WORK, AND AGREES TO BE FULLY RESPONSIBLE FOR ANY AND ALL DAMAGES WHICH MIGHT BE OCCASIONED BY THE CONTRACTOR'S FAILURE TO EXACTLY LOCATE AND PRESERVE ANY AND ALL UNDERGROUND UTILITIES. CONTACT THE SOUTH DAKOTA STATE CALL NOTIFICATION CENTER 2025 CENTRE POINT BOULEVARD #310 MENDOTA HEIGHTS, MN 55120 1-800-781-7474.



PROJECT ARCHITECT:
FENNEL DESIGN INC.
 201 MAIN ST. STE 201
 RAPID CITY, SD 57701
 CONTACT: GENE FENNEL
 P. 605-716-0520

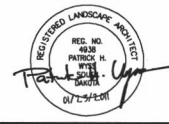
CIVIL ENGINEER:
enlac ENGINEERING SERVICES, INC.
 1560 CONCOURSE DRIVE
 RAPID CITY, SD 57703
 CONTACT: TED SCHULTZ
 P. 605-341-7800

MECHANICAL/ELECTRICAL ENGINEER:
SKYLINE ENGINEERING, L.L.C.
 615 12TH STREET
 RAPID CITY, SD 57701
 CONTACT: GARY KUMAR
 JAMIE SCOTT
 P. 605-737-3800

LANDSCAPE:
WYSS ASSOCIATES, INC.
 788 6TH ST.
 RAPID CITY, SD 57701
 CONTACT: MANN JOHMAN
 P. 605-349-2994

STRUCTURAL ENGINEER:
ALBERTSON ENGINEERING, INC.
 302 WEST MAIN ST. STE C
 RAPID CITY, SD 57702
 CONTACT: DAVID LEPPERT
 P. 605-344-4200

REVISIONS: **LL**
 DATE: 02/01/2025
 PROJECT MANAGER: GENE FENNEL
 PROJECT NUMBER: 110081P09



Pennington County
Campus Expansion
 SITE WORK
 PACKAGE #1
 LANDSCAPE
 PLANTING PLAN

1LA2.0

SCALE: 1"=20'
 ORIGINAL SHEET SIZE = 24"x36"

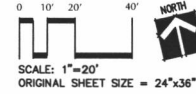
RECEIVED

LANDSCAPE FINISH NOTES & SPECIFICATIONS

- SOD INSTALLATION SEASONS SHALL BE FROM APRIL 1 TO GRASS-UP (DORMANT) IN THE SPRING UNTIL 4 WEEKS PRIOR TO THE FIRST EXPECT HARD FREEZE IN THE FALL.
- SOD SHALL BE A KENTUCKY BLUEGRASS BLEND AND BE PEAT MOSS BASED. CONTRACTOR SHALL SUBMIT A CERTIFICATION OF SOD FROM SOD VENDOR TO LANDSCAPE ARCHITECT INCLUDING THE COMPOSITION OF THE SOD.
- CONTRACTOR SHALL PREPARE THE SOD AREAS AS FOLLOWS PRIOR TO PLACING SOD:
VERIFY THAT THE SODDED AREA IS FREE OF CONSTRUCTION DEBRIS, STONES, LIMING VEGETATION, ETC. TREE PLANTINGS SHALL BE ESTABLISHED AND MAINTAINED IN ACCORDANCE WITH THE DRAWINGS AND/OR APPLICABLE SPECIFICATIONS PRIOR TO INSTALLATION.
- INSTALL SOD IMMEDIATELY UPON DELIVERY TO JOB SITE. COORDINATE WITH SOD SUPPLIER TO AVOID SOD DRYING OUT PRIOR TO DELIVERY. SOD THAT IS DRY, WEEBY OR UNSATISFACTORY WILL BE REJECTED AT CONTRACTORS EXPENSE.
- ROTO-TILL THE TOP 4-6" OF THE SOIL.
- IMMEDIATELY PRIOR TO SODD INSTALLATION BROADCAST A SLOW RELEASE STARTER FERTILIZER TO ALL AREAS AT THE RATE INSTRUCTED PER THE SOD SUPPLIER. COORDINATE THESE INSTRUCTIONS WITH LANDSCAPE ARCHITECT PRIOR TO PLACING

- FERTILIZER.
- INSTALL SOD WITH STAGGERED JOINTS AND INSTALL SOD TO FORM A SOLID MASS. AFTER PLACING SOD, ROLL ENTIRE AREA.
- UPON COMPLETION OF AN AREA, WATER THOROUGHLY TO TWO INCHES. MAINTAIN SOD SATURATION FOR 21 DAYS THEN GRADUALLY REDUCE WATERING.
- AFTER THE INITIAL LIGHT WATERING AND PRIOR TO SATURATION, APPLY A PRE-EMERGENT TO CONTROL GRASSY WEEDS. REPEAT THIS PRE-EMERGENT APPLICATION IN 8 WEEKS.
- APPROVED ACTIVE INGREDIENTS:
PENDINGMETALIN
DIMENSION
RONSTAR
SURFLAN (PREFERRED)
TRIFLURAN
- 30 DAYS AFTER INSTALLATION, APPLY A SLOW RELEASE NITROGEN FERTILIZER AT THE RATE TO PROVIDE 1/8 OF NITROGEN PER 1000 SQ. FT. WATER IMMEDIATELY TO ACTIVATE.

- CONTRACTOR IS RESPONSIBLE FOR MAINTAINING HEALTH OF ALL SOD THROUGH FINAL ACCEPTANCE OF PROJECT AND THE ESTABLISHMENT PERIOD.
- CEDAR MULCH SHALL BE INSTALLED AT ALL TREE PLANTINGS LOCATED IN LAWN AREAS. CEDAR MULCH SHALL BE ALL ORGANIC AND OF NATURAL CEDAR COLOR. INSTALL TO DEPTH AS INDICATED ON DETAILS AND PLANS.
- PEA GRAVEL ROCK MULCH SHALL BE A LOCALLY AVAILABLE PEA GRAVEL (WASTA SAND AND GRAVEL IS ACCEPTABLE). ROCK MULCH SHALL BE FREE OF ORGANIC MATERIAL. INSTALL TO DEPTH AS SPECIFIED.
- CONTRACTOR SHALL PROVIDE AND INSTALL WEED CONTROL BARRIER UNDER ALL AREAS THAT RECEIVE ROCK MULCH. APPROVED PRODUCTS: MIRAFIX MIRASCAPPE & TYMEX LANDSCAPE FABRIC (OR APPROVED EQUAL).
- INSTALL LANDSCAPE FURNITURE IN ACCORDANCE WITH MANUFACTURERS WRITTEN INSTRUCTIONS. PROVIDE SHOP DRAWINGS AND FULL COLOR CHARTS FOR FINAL COLOR SELECTION OF ALL LANDSCAPE BIKE RACKS, BENCHES AND WASTE RECEPTACLES.
- UPON COMPLETION OF WORK, CLEAN ADJACENT STREETS AND SITE PAVING OF DIRT AND DEBRIS ACCUMULATION.
- REMOVE ALL SURPLUS SOIL AND WASTE MATERIAL, INCLUDING EXCESS SUBSOIL, UNSUITABLE SOIL, TRASH, DEBRIS AND LEGALLY DISPOSE OF THESE ITEMS OFF OF THE OWNER'S PROPERTY.



LANDSCAPE FINISH PLAN LEGEND:

- SODDED AREA (APPROXIMATELY 22,850 SF)
- PEA GRAVEL MINERAL MULCH (APPROXIMATELY 11,000 SF)



PROJECT ARCHITECT:
FENNEL DESIGN INC.
201 MAIN ST. STE 201
RAPID CITY, SD 57701
CONTACT: GENE FENNEL
P. 605-716-0520

CIVIL ENGINEER:
ORION ENGINEERING SERVICES, INC.
1560 CONCOURSE DRIVE
RAPID CITY, SD 57703
CONTACT: TED SCHULTZ
P. 605-341-7600

MECHANICAL/ELECTRICAL ENGINEER:
SKYLINE ENGINEERING, LLC.
815 12TH STREET
RAPID CITY, SD 57701
CONTACT: GARY KUHIL
JAMIE STAMPE
P. 605-737-3800

LANDSCAPE:
WYSS ASSOCIATES, INC.
768 4TH ST.
RAPID CITY, SD 57701
CONTACT: MARK JOHMAN
P. 605-348-2268

STRUCTURAL ENGINEER:
ALBERTSON ENGINEERING, INC.
3202 WEST MAIN ST. STE C
RAPID CITY, SD 57702
CONTACT: DAVID LEPPERT
P. 605-343-9606

REVISIONS:

DATE: 02/01/2012

PROJECT MANAGER: GENE FENNEL

PROJECT NUMBER: 11008 (FDI)



**Pennington County
Campus Expansion**

SITE WORK
PACKAGE #1

LANDSCAPE
FINISH PLAN

1LA2.2

FEB 1 2012
Rapid City Community Planning & Development

