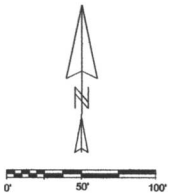
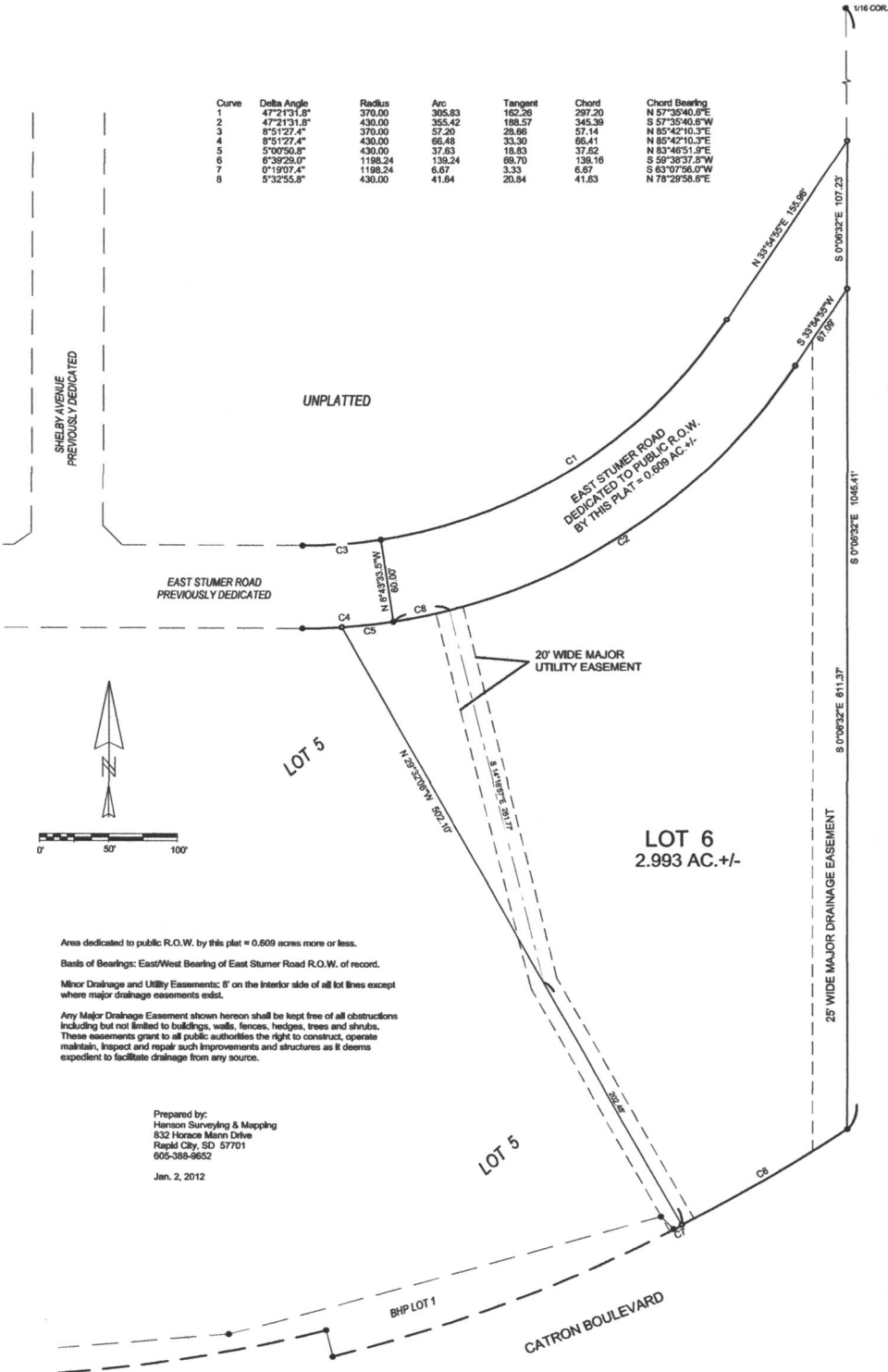


**PRELIMINARY PLAT
LOT 6 OF NORTH 80 SUBDIVISION
(FORMERLY UNPLATTED PORTION OF GOVT. LOT 2 IN SECTION 19, T1N, R8E, B.H.M.)
RAPID CITY, PENNINGTON COUNTY, SOUTH DAKOTA**

Curve	Delta Angle	Radius	Arc	Tangent	Chord	Chord Bearing
1	47°21'31.8"	370.00	305.83	162.26	297.20	N 57°35'40.6"E
2	47°21'31.8"	430.00	355.42	188.57	345.39	S 57°35'40.6"W
3	8°51'27.4"	370.00	57.20	28.66	57.14	N 85°42'10.3"E
4	8°51'27.4"	430.00	66.48	33.30	66.41	N 85°42'10.3"E
5	5°00'50.8"	430.00	37.83	18.83	37.82	N 83°48'51.8"E
6	6°39'29.0"	1198.24	138.24	68.70	138.18	S 59°38'37.8"W
7	0°19'07.4"	1198.24	6.67	3.33	6.67	S 63°07'56.0"W
8	5°32'55.8"	430.00	41.84	20.84	41.63	N 78°29'58.0"E



Area dedicated to public R.O.W. by this plat = 0.609 acres more or less.
 Basis of Bearings: East/West Bearing of East Stumer Road R.O.W. of record.
 Minor Drainage and Utility Easements: 8' on the interior side of all lot lines except where major drainage easements exist.
 Any Major Drainage Easement shown hereon shall be kept free of all obstructions including but not limited to buildings, walls, fences, hedges, trees and shrubs. These easements grant to all public authorities the right to construct, operate maintain, inspect and repair such improvements and structures as it deems expedient to facilitate drainage from any source.

Prepared by:
 Hanson Surveying & Mapping
 832 Horace Mann Drive
 Rapid City, SD 57701
 605-388-8652
 Jan. 2, 2012