

RECEIVED

JAN 16 2012

Rapid City Community Planning  
**FMG** Moment Services  
 3700 Sturgis Road  
 Rapid City, SD 57705-0317  
 (605) 342-4222  
 www.fmgengineering.com

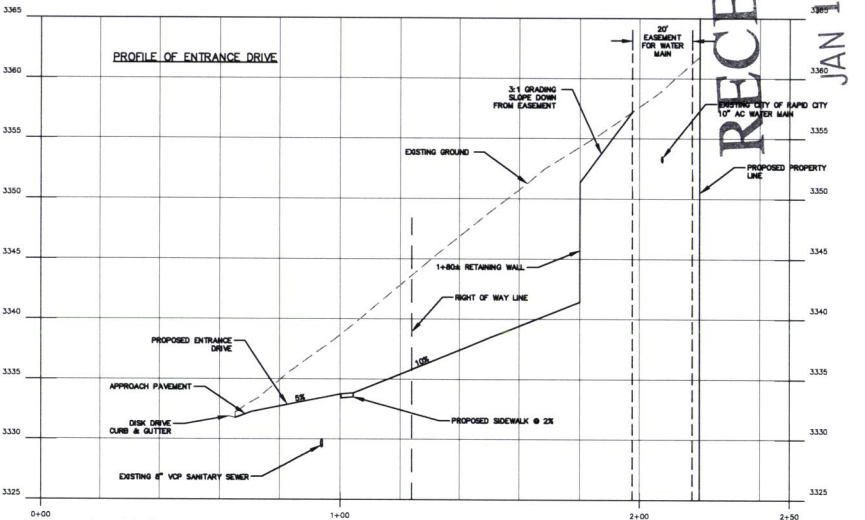
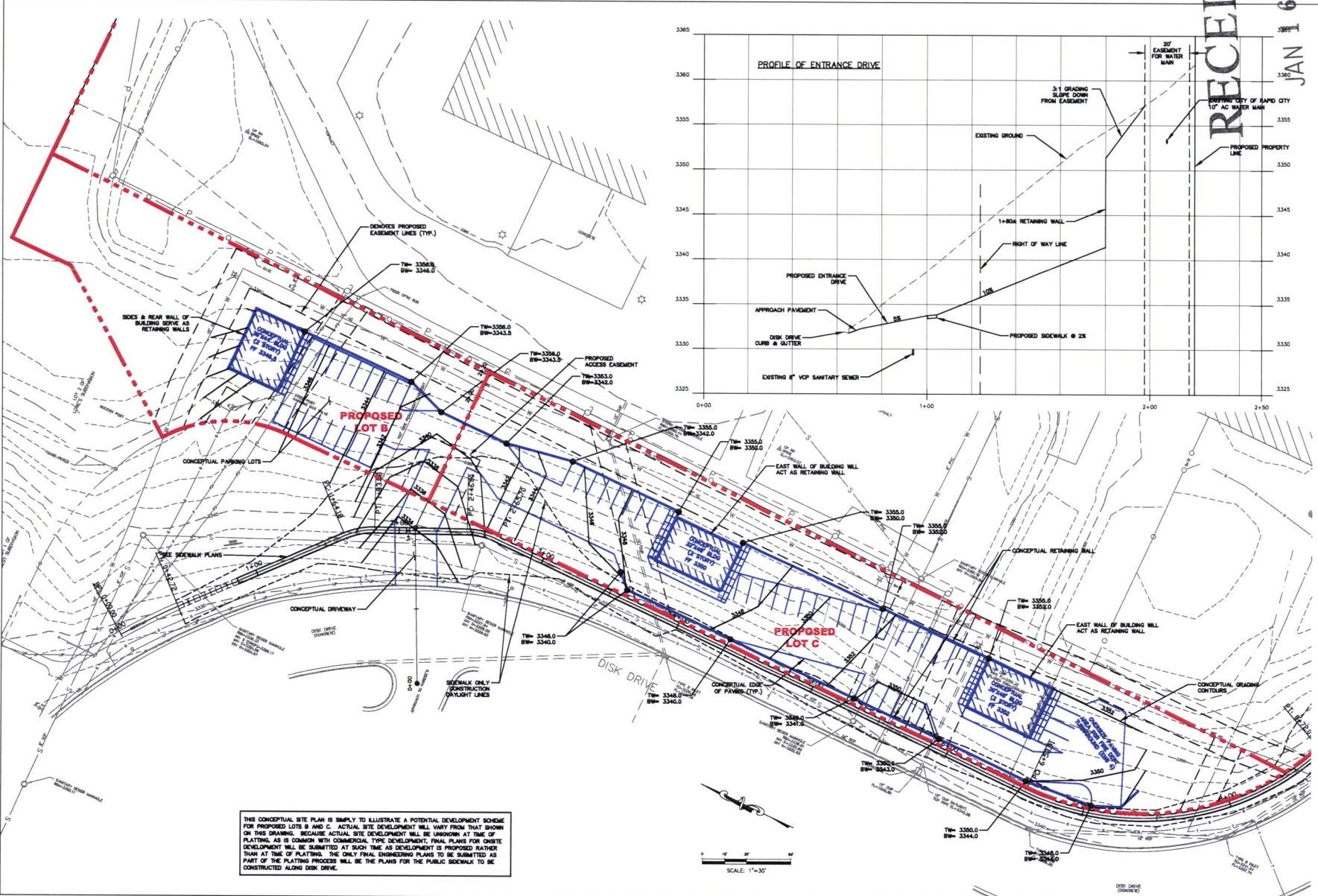


REVIEW SET  
NOT FOR  
CONSTRUCTION  
JANUARY 13, 2012

|              |                  |
|--------------|------------------|
| File Number: | 100113           |
| Location:    | NET/A SECTION 25 |
| Drawn By:    | JKS/JPD          |
| Checked By:  | ADP              |
| Designed By: | JOS              |
| Drawn By:    | JKS/JPD          |
| Checked By:  | ADP              |
| Surveyed By: | DW/XCS           |
| Date:        | SEPT-OCT, 2011   |

**LOTS A, B, & C OF PROPOSED  
 SYMCOM SUBDIVISION  
 222 DISK DRIVE  
 RAPID CITY, SD**

|                 |                                     |
|-----------------|-------------------------------------|
| Revision / Date |                                     |
| Sheet Name      | CONCEPTUAL SITE PLAN FOR LOTS B & C |
| Sheet Number    | 3 of 3                              |



THIS CONCEPTUAL SITE PLAN IS SIMPLY TO ILLUSTRATE A POTENTIAL DEVELOPMENT SCHEME FOR PROPOSED LOTS B AND C. ACTUAL SITE DEVELOPMENT WILL VARY FROM THAT SHOWN ON THIS DRAWING, BECAUSE ACTUAL SITE DEVELOPMENT WILL BE UNKNOWN AT TIME OF PLATTING, AS IS COMMON WITH COMMERCIAL TYPE DEVELOPMENT. FINAL PLANS FOR ONSITE DEVELOPMENT WILL BE SUBMITTED AT SUCH TIME AS DEVELOPMENT IS PROPOSED EARLIER THAN AT TIME OF PLATTING. THE ONLY FINAL ENGINEERING PLANS TO BE SUBMITTED AS PART OF THE PLATTING PROCESS WILL BE THE PLANS FOR THE PUBLIC SIDEWALK TO BE CONSTRUCTED ALONG DISK DRIVE.