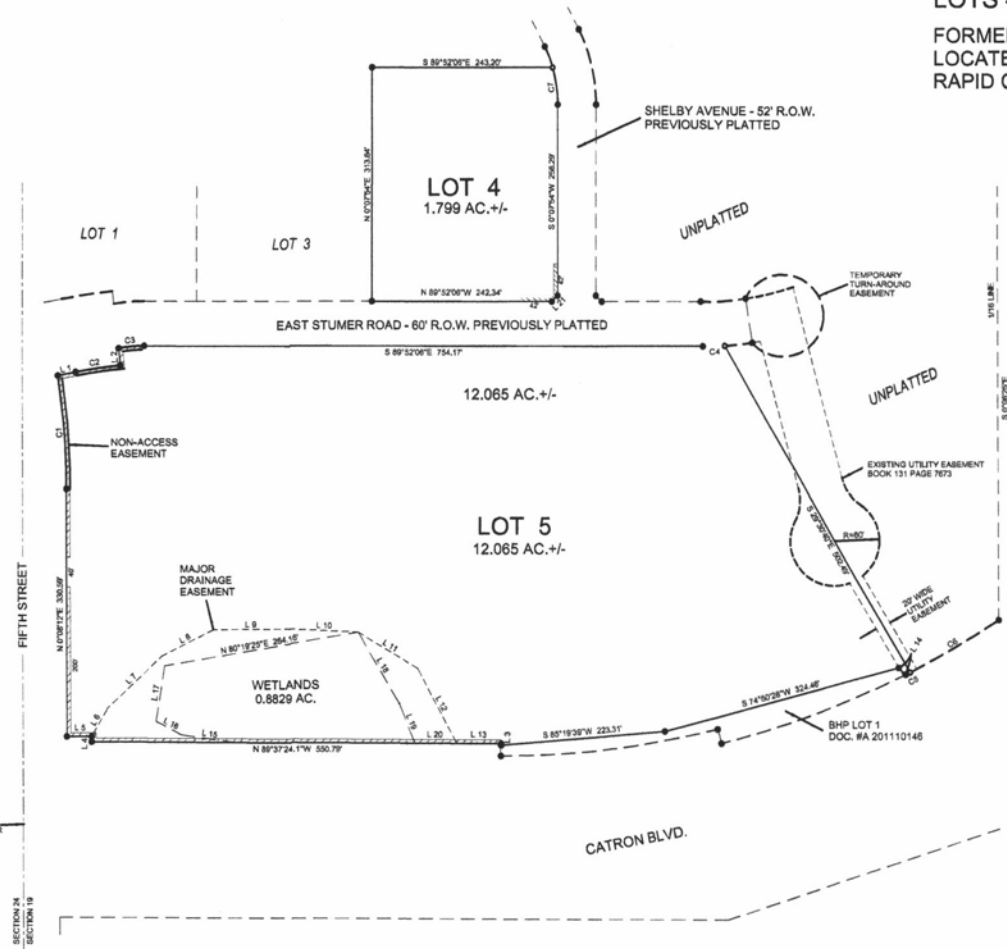
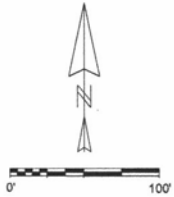


LOTS 4 AND 5 OF NORTH 80 SUBDIVISION
 FORMERLY AN UNPLATTED PORTION OF G.L. 2
 LOCATED IN SECTION 19, T1N, R8E, B.H.M.
 RAPID CITY, PENNINGTON COUNTY, SOUTH DAKOTA



Notes: Major Drainage Easement shown hereon shall be kept free of all obstructions including but not limited to buildings, wells, fences, hedges, trees and shrubs. This easement grants to all public authorities the right to construct, operate, maintain, inspect and repair such improvements as it deems expedient to facilitate drainage from any source.

Minor drainage and utility easements are hereby established 5' wide on the interior side of all lot lines and right-of-ways except where major drainage easements are located.

Basis of Bearings: Section Line data from plat of lot H2 in G.L. 2.

Line	Bearing	Distance
1	N 78°54'18.0\"E	24.48'
2	N 5°01'45.3\"W	22.85'
3	N 1°35'15.5\"E	2.07'
4	N 0°00'56.8\"E	6.83'
5	N 89°38'37.0\"W	33.97'
6	N 28°38'17.9\"E	42.83'
7	N 45°58'08.0\"E	100.88'
8	N 83°07'51.4\"E	75.09'
9	N 59°38'50.7\"E	103.14'
10	S 87°13'44.5\"E	91.43'
11	S 59°02'06.7\"E	94.40'
12	S 27°34'11.0\"E	113.23'
13	S 89°37'40.6\"E	59.71'
14	N 45°09'37.8\"W	12.84'
15	N 2°04'23.8\"W	73.58'
16	N 82°43'16.4\"W	39.49'
17	S 9°10'28.1\"E	75.28'
18	S 30°09'21.0\"E	110.68'
19	S 21°45'20.9\"E	56.93'
20	N 89°37'22.1\"W	58.86'
21	S 45°07'54.2\"W	11.31'

Prepared by: Hanson Surveying & Mapping
 532 Horace Mann Drive
 Rapid City, SD 57701
 605-388-8652

December 23, 2011

Curve	Delta Angle	Radius	Arc	Tangent	Chord	Chord Bearing
1	8°33'38.9\"	1021.00	152.55	75.42	152.41	N 4°08'37.0\"W
2	5°21'14.0\"	650.00	60.74	30.39	60.72	N 81°04'53.0\"E
3	11°21'05.2\"	170.00	33.68	16.80	33.63	N 84°27'22.3\"E
4	3°47'44.7\"	430.00	28.49	14.25	28.48	N 88°14'52.2\"E
5	0°18'05.9\"	1198.24	6.68	3.33	6.66	S 83°10'32.5\"W
6	6°39'35.4\"	1198.24	138.28	69.72	138.20	N 59°41'12.3\"E
7	16°28'33.1\"	174.00	50.04	25.19	49.86	S 8°06'00.6\"E

RECEIVED

DEC 29 2011