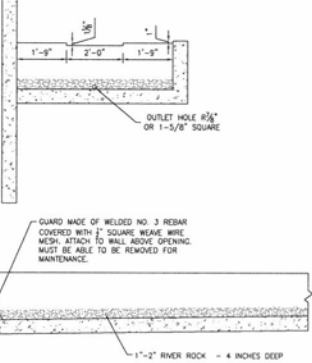


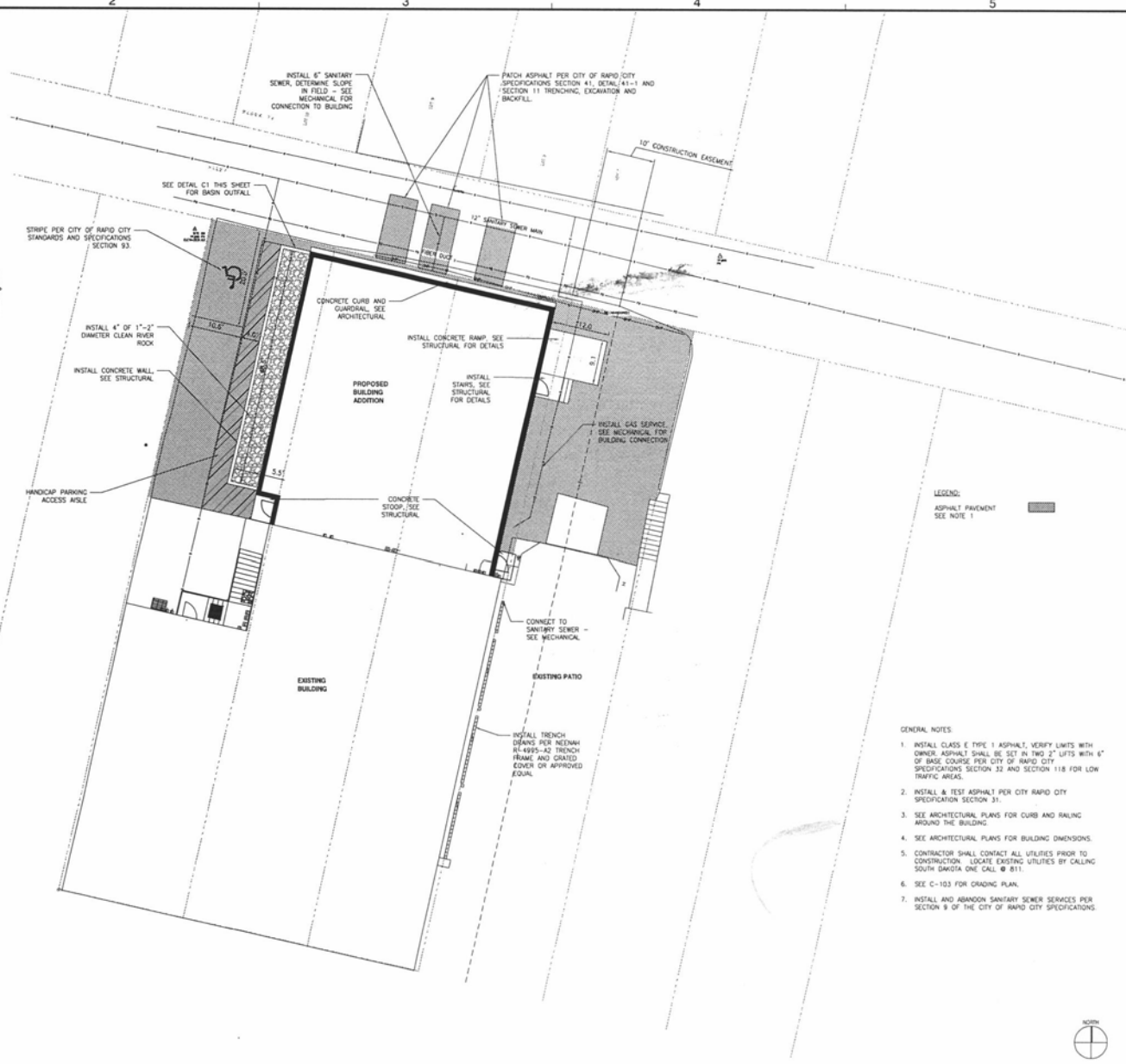
11UR028



C1 BASIN OUTFALL
SCALE: NOT TO SCALE

A1 SITE LAYOUT AND UTILITIES
SCALE: 1" = 10'-0"

RECEIVED
 SEP 27 2011
 Rapid City Growth
 Management Department



- GENERAL NOTES
- INSTALL CLASS E TYPE 1 ASPHALT, VERIFY LIMITS WITH OWNER. ASPHALT SHALL BE SET IN TWO 2" LIFTS WITH 6" OF BASE COURSE PER CITY OF RAPID CITY SPECIFICATIONS SECTION 32 AND SECTION 118 FOR LOW TRAFFIC AREAS.
 - INSTALL & TEST ASPHALT PER CITY RAPID CITY SPECIFICATION SECTION 31.
 - SEE ARCHITECTURAL PLANS FOR CURB AND RAILING AROUND THE BUILDING.
 - SEE ARCHITECTURAL PLANS FOR BUILDING DIMENSIONS.
 - CONTRACTOR SHALL CONTACT ALL UTILITIES PRIOR TO CONSTRUCTION. LOCATE EXISTING UTILITIES BY CALLING SOUTH DAKOTA ONE CALL @ 811.
 - SEE C-103 FOR GRADING PLAN.
 - INSTALL AND ABANDON SANITARY SEWER SERVICES PER SECTION 9 OF THE CITY OF RAPID CITY SPECIFICATIONS.

TSP

To Solve. To Excel. Together.

TSP, Inc.
 600 Kansas City St.
 Rapid City, SD 57701

phone: (605) 343-9102
 fax: (605) 343-7159
 www.tspinc.com

Architecture
 Engineering
 Construction

CONSULTANTS:

PROJECT TITLE:
**FATTER BOYS
 616-620 Main Street
 Historic Building
 Rapid City, South Dakota**

ISSUES:

MARK	DATE	DESCRIPTION
1	09/02/11	CONSTRUCTION DOCUMENTS

REVISIONS:

MARK	DATE	DESCRIPTION
------	------	-------------

SHEET PROJECT #:

TSP PROJECT #:	03100749
DRAWN BY:	RHM
CHECK BY:	RHM
	6 TSP 2010

SHEET TITLE:
**SITE LAYOUT
 AND UTILITIES**

SHEET NUMBER:
C-102

LISTED DRAWINGS SCALE(S) UNLESS RELEASED FROM ORIGINAL. 24 x 36 FORMAT

CONSTRUCTION DOCUMENTS