

11PL055

# EXHIBIT 'A' WATER MAIN EASEMENTS S1/2 OF THE SW1/4

SECTION 16, T1N, R8E, BHM  
RAPID CITY, PENNINGTON COUNTY, SOUTH DAKOTA

SECTION 1/16 LINE

MARLIN DRIVE  
64' WIDE R.O.W.  
OF RECORD

EAST MINNESOTA STREET  
R.O.W. OF RECORD

WATER MAIN EASEMENT  
TO BE CREATED  
THIS DOCUMENT  
SEE DETAIL 'A'

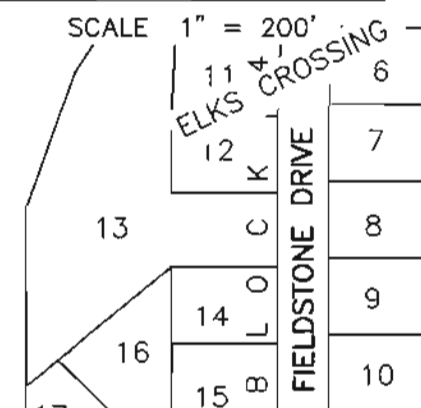
SECTION 1/16 LINE  
S E 1 / 4 - S W 1 / 4

S W 1 / 4 - S W 1 / 4



SEPTEMBER 30, 2011

SCALE 1" = 200'

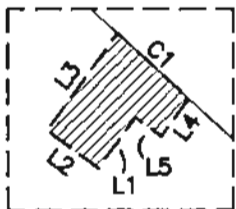


LINE	BEARING	LENGTH
L1	S36°06'15"W	9.80'
L2	N53°53'45"W	10.00'
L3	N36°06'15"E	18.82'
L4	S36°06'15"W	7.29'
L5	N53°53'45"W	5.00'
L6	N40°52'58"E	9.00'
L7	S45°27'18"E	5.00'
L8	S40°52'58"W	9.00'
L9	N45°27'18"W	5.00'
L10	N44°32'42"E	9.50'
L11	N45°27'18"W	5.00'
L12	N44°32'42"E	10.00'
L13	N45°27'18"W	10.00'
L14	S44°32'42"W	19.50'
L15	S45°27'18"E	15.00'

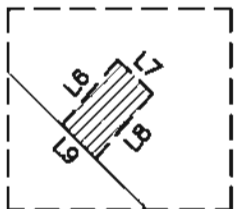
WATER MAIN EASEMENT  
TO BE CREATED  
THIS DOCUMENT  
SEE DETAIL 'B'

WATER MAIN EASEMENT  
TO BE CREATED  
THIS DOCUMENT  
SEE DETAIL 'C'

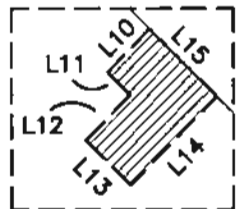
DETAIL 'A'  
SCALE: 1"=30'



DETAIL 'B'  
SCALE: 1"=20'



DETAIL 'C'  
SCALE: 1"=30'



RECEIVED  
Rapid City Growth  
Management Department  
SEP 30 2011

RENNER & ASSOCIATES, LLC.

616 SIXTH ST. \* RAPID CITY, SD 57701  
PHONE: 605/721-7310 \* FAX: 605/721-7313  
EMAIL: GARY@RENNERASSOC.COM



CITY HALL 1903

CURVE	LENGTH	RADIUS	DELTA	CHORD BEARING	CHORD DISTANCE
C1	15.10	2938.00	00°17'40"	S47°19'49"E	15.10
C2	88.61	2938.00	01°43'41"	N46°19'09"W	88.61