

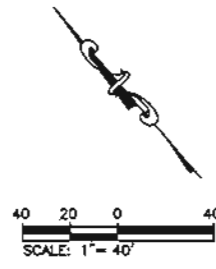
FOR CITY OF RAPID CITY USE ONLY  
 LANDSCAPE SUMMARY  
 TOTAL BUILDING SQ.FT. 98,100 SF  
 SITE AREA PHASE 1 - 10.0 ACRES 435,000 SF  
 LANDSCAPE POINTS REQUIRED 337,500

LANDSCAPE POINTS PROVIDED: 338,640

ITEM	QUANTITY	POINT VALUE	TOTAL POINTS
CORNIFER SHRUB	315	250	78,750
DECIDUOUS TREES	29	2000	58,000
CONIFEROUS TREES	36	2000	72,000
TURFGRASS (SY)	12,969	10	129,890
TOTAL			338,640 POINTS

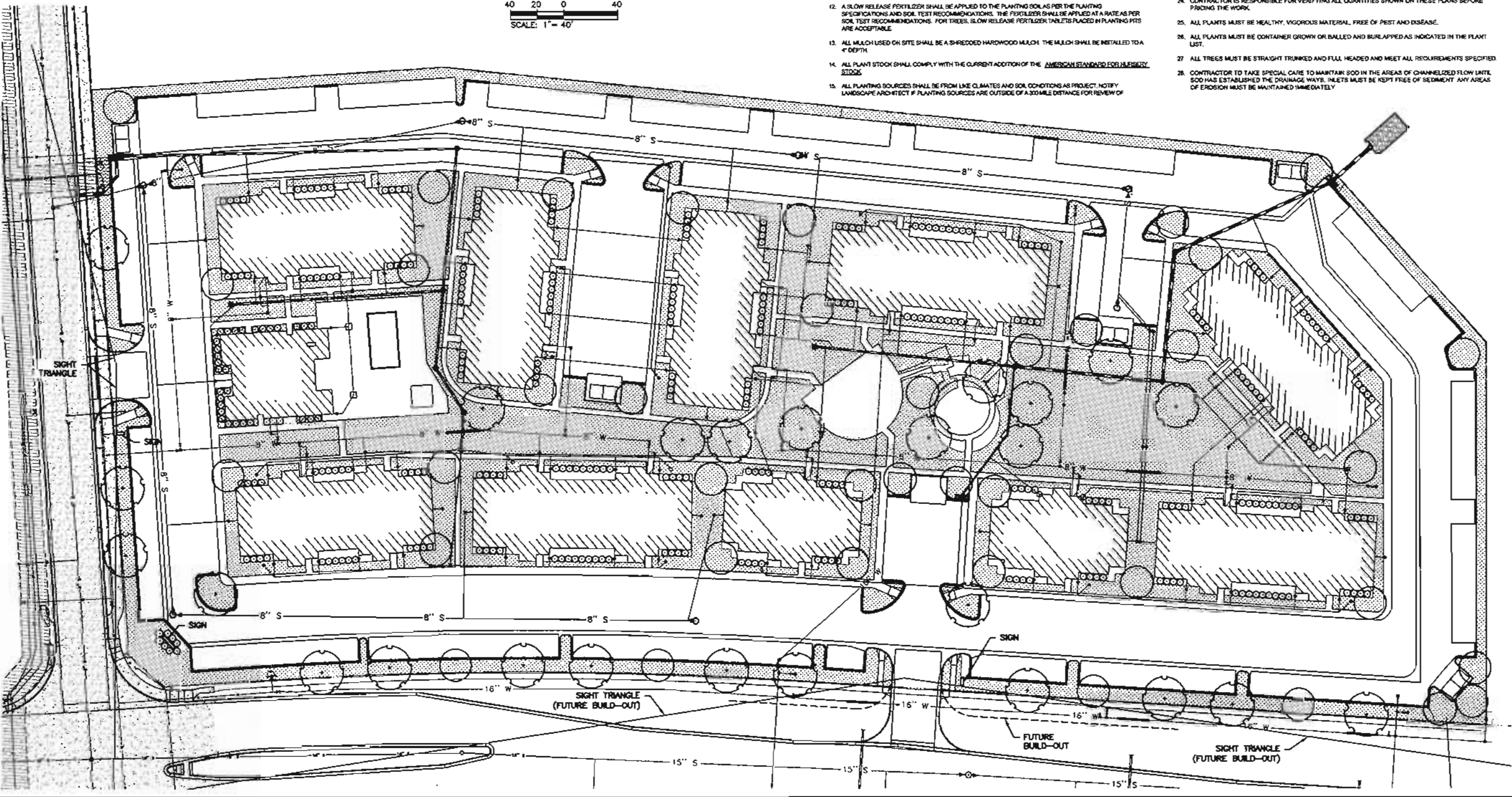
LEGEND

- SHRUB (6' OC TYP)  
JUNIPER AND/OR  
ROSE BUSH
- CONIFEROUS TREE
- DECIDUOUS TREE  
SHADE MASTER  
HONEYLOCUST
- TURF GRASS



- NOTES:
- THE CONTRACTOR SHALL COORDINATE PLANTING INSTALLATION WITH OTHER CONTRACTORS PERFORMING WORK ON SITE.
  - PRIOR TO CONSTRUCTION, THE CONTRACTOR SHALL BE RESPONSIBLE FOR LOCATING ALL UNDERGROUND UTILITIES AND SHALL AVOID DAMAGE TO ALL UTILITIES DURING THE COURSE OF THE WORK. THE CONTRACTOR IS RESPONSIBLE FOR REPAIRING ANY AND ALL DAMAGE TO UTILITIES, STRUCTURES, SITE APPLURTENANCES, ETC WHICH OCCURS AS A RESULT OF THE LANDSCAPE AND IRRIGATION CONSTRUCTION.
  - THE CONTRACTOR IS SPECIFICALLY CAUTIONED THAT THE LOCATIONS AND/OR ELEVATION OF EXISTING UTILITIES AS SHOWN ON THESE PLANS IS BASED ON RECORDS OF THE VARIOUS UTILITY COMPANIES AND, WHERE POSSIBLE, MEASUREMENTS TAKEN IN THE FIELD. THE INFORMATION IS NOT TO BE RELIED ON AS BEING EXACT OR COMPLETE. THE CONTRACTOR MUST CALL THE APPROPRIATE UTILITY COMPANY TO REQUEST EXACT FIELD LOCATION OF UTILITIES. IT SHALL BE THE RESPONSIBILITY OF THE CONTRACTOR TO RELOCATE ALL EXISTING UTILITIES WHICH CONFLICT WITH THE PROPOSED IMPROVEMENTS SHOWN ON PLANS.
  - NO PLANT OR CULTIVAR SUBSTITUTION WILL BE ACCEPTABLE WITHOUT WRITTEN APPROVAL BY THE LANDSCAPE ARCHITECT OR OWNERS CIVIL ENGINEERING CONSULTANT.
  - ALL PLANTING LOCATIONS SHALL BE STAKED OR SET OUT BY THE CONTRACTOR. THE CONTRACTOR SHALL NOTIFY THE LANDSCAPE ARCHITECT 2 DAYS PRIOR TO PLANTING THE STAKING IS COMPLETE.
  - ALL TREES AND SHRUBS SHALL BEAR THE SAME RELATIONSHIP TO PLANTED GRADES AS IN THE NURSERY.
  - ALL SYNTHETIC MATERIALS FROM AROUND THE TREE TRUNK AND ROOT BALL SHALL BE REMOVED AND NOT INCLUDED WITHIN THE BACKFILL SOIL, MULCH, STIKES, TIES, SYNTHETIC BURLAP, PLASTIC STRAPPING AND OTHER MATERIALS THAT WILL NOT DECOMPOSE IN THE SOIL SHALL BE REMOVED AT PLANTING.
  - THE CONTRACTOR SHALL EXERCISE CARE IN THE INSTALLATION OF ALL PLANTING MATERIAL. ANY PLANT MATERIAL INJURED OR DESTROYED DURING CONSTRUCTION SHALL BE REPLACED BY THE CONTRACTOR AT NO COST TO THE OWNER.
  - ALL PLANTING MATERIAL SHALL HAVE A 2 YEAR WARRANTY PERIOD. TURF SHALL HAVE A 30 DAY WARRANTY PERIOD.
  - THE WARRANTY PERIOD SHALL BEGIN ONCE PLANTING AND IRRIGATION HAVE BEEN ACCEPTED IN WRITING FROM THE OWNER.
  - THE PLANTING SEASON SHALL BE FROM:
    - 10.1 SPRING: APRIL 15TH TO JUNE 15TH
    - 10.2 FALL: SEPT 1ST TO OCT. 1ST.
  - TREES SHALL BE SPRAYED WITH AN ANTI-DESICCANT PRIOR TO LEAVING THE NURSERY AND WITHIN 24 HOURS OF PLANTING.
  - A SLOW RELEASE FERTILIZER SHALL BE APPLIED TO THE PLANTING SOLAS PER THE PLANTING SPECIFICATIONS AND SOIL TEST RECOMMENDATIONS. THE FERTILIZER SHALL BE APPLIED AT A RATE AS PER SOIL TEST RECOMMENDATIONS. FOR TREES, SLOW RELEASE FERTILIZER TABLETS PLACED IN PLANTING PITS ARE ACCEPTABLE.
  - ALL MULCH USED ON SITE SHALL BE A SHREDDED HARDWOOD MULCH. THE MULCH SHALL BE INSTALLED TO A 4" DEPTH.
  - ALL PLANT STOCK SHALL COMPLY WITH THE CURRENT ADDITION OF THE AMERICAN STANDARD FOR NURSERY STOCK.
  - ALL PLANTING SOURCES SHALL BE FROM LIKE CLIMATES AND SOIL CONDITIONS AS PROJECT. NOTIFY LANDSCAPE ARCHITECT IF PLANTING SOURCES ARE OUTSIDE OF A 30 MILE DISTANCE FOR REVIEW OF NURSERY AND CONDITIONS.

- MULCH AND CONDITIONS:
- UNLESS OTHERWISE INDICATED, ALL PLANTING BEDS IN TURF AREAS SHALL BE BORDERED BY A 1/2" THICK, 4" BLACK STEEL LANDSCAPE EDGER. SEE PLANTING DETAILS.
  - FINISHED GRADE SHALL BE HELD 3 INCHES BELOW TOP OF CURB AND 2 INCHES BELOW TOP OF CURB FOR SOO. OTHER AREAS AS SPECIFIED, SHALL RECEIVE A MULCH DEPTH OF 4" OVER THE ROOT BALL.
  - IF A CONFLICT IS FOUND BETWEEN THE PLANTING SCHEDULE AND THE PLAN COUNT, THE PLAN COUNT TAKES PRECEDENCE OVER THE PLANTING SCHEDULE.
  - TURFGRASS SOO: SEE PLAN FOR LOCATIONS.
  - SOO SHALL BE WELL ROOTED AND BE COMPLETELY FREE FROM NOXIOUS WEEDS AND REASONABLY FREE FROM OTHER OBJECTABLE GRASSES, WEEDS, AND STONES. SOODING AND SEEDING SHALL BE DONE IN ACCORDANCE WITH THE SOUTH DAKOTA STANDARD SPECIFICATIONS FOR HIGHWAY CONSTRUCTION.
  - CERTIFIED, COMPLYING WITH "SPECIFICATIONS FOR TURFGRASS SOO MATERIALS" IN TYP'S GUIDELINE SPECIFICATIONS TO TURFGRASS SOODING. FURNISH VARIABLE SOO OF UNIFORM DENSITY, COLOR, AND TEXTURE, STRONGLY ROOTED, AND CAPABLE OF VIGOROUS GROWTH AND DEVELOPMENT WHEN PLANTED.
  - THE SOO SHALL BE A FULL SUN MIX KENTUCKY BLUE GRASS (POA PRATENSIS) MIX CONTAINING A MINIMUM OF 3 CULTIVARS.
  - LAY SOO WITHIN 24 HOURS OF HARVESTING. DO NOT LAY SOO IF DORMANT OR IF GROUND IS FROZEN OR MUDDY.
  - LAY SOO TO FORM A SOLID MASS WITH TIGHTLY FITTED JOINTS. BUTT ENDS AND SIDES OF SOO; DO NOT STRETCH OR OVERLAP. STAGGER SOO STRIPS OR PADS TO OFFSET JOINTS IN ADJACENT COURSES. AVOID DAMAGE TO SUBGRADE OR SOO DURING INSTALLATION. TAMP AND ROLL LIGHTLY TO ENSURE CONTACT WITH SUBGRADE, ELIMINATE AIR POCKETS, AND FORM A SMOOTH SURFACE. WORK SIFTED SOIL OR FINE SAND INTO MINOR CRACKS BETWEEN PIECES OF SOO. REMOVE EXCESS TO AVOID SMOTHERING SOO AND ADJACENT.
  - THE CONTRACTOR SHALL FULLY COMPLY WITH ALL RAPID CITY ZONING CODES SECTION 17.30.300 - LANDSCAPE ORDINANCE.
  - ALL LANDSCAPE BEDS SHALL HAVE LANDSCAPE FABRIC INSTALLED UNDER THE MULCH BED.
    - 21.1 COMPOSITE FABRIC: WOVEN, NEEDLE-PUNCHED POLYPROPYLENE SUBSTRATE BONDED TO A NONWOVEN POLYPROPYLENE FABRIC, 4.0 OZ./SQ. YD.
  - THE PLANT MATERIAL INSTALLATION SHALL BE TIMED WITH IRRIGATION INSTALLATION ALLOWING PLANTS TO GET RECOMMENDED WATER AMOUNTS. OTHER THAN IMMEDIATE PLANT WATERING, TEMPORARY WATERING SHALL NOT BE ALLOWED.
  - ALL PLANTS ARE SUBJECT TO THE APPROVAL OF THE LANDSCAPE ARCHITECT AND/OR OWNER BEFORE DURING AND AFTER INSTALLATION.
  - CONTRACTOR IS RESPONSIBLE FOR VERIFYING ALL QUANTITIES SHOWN ON THESE PLANS BEFORE PRICING THE WORK.
  - ALL PLANTS MUST BE HEALTHY, VIGOROUS MATERIAL, FREE OF PEST AND DISEASE.
  - ALL PLANTS MUST BE CONTAINER GROWN OR BALLED AND BURLAPPED AS INDICATED IN THE PLANT LIST.
  - ALL TREES MUST BE STRAIGHT TRUNKED AND FULL HEADED AND MEET ALL REQUIREMENTS SPECIFIED.
  - CONTRACTOR TO TAKE SPECIAL CARE TO MAINTAIN SOO IN THE AREAS OF CHANNELIZED FLOW UNITS. SOO HAS ESTABLISHED THE DRAINAGEWAYS. INLETS MUST BE KEPT FREE OF SEDIMENT. ANY AREAS OF EROSION MUST BE MAINTAINED IMMEDIATELY.



Submitted: \_\_\_\_\_  
 9.30.11-PRELIMINARY PLAT SUBMITTAL

Internal Job No: 11-0592  
 Designed By: HS  
 Drawn By: PMW  
 Surveyed By: RENNER & ASSOC.  
 Survey Date: 09/2011

FOR REVIEW ONLY

**RECEIVED**  
 SEP 20 2011

**DREAM DESIGN INTERNATIONAL, INC.**  
 ENGINEERING, LANDSCAPE ARCHITECTURE,  
 LAND PLANNING, CONSTRUCTION ADMINISTRATION  
 528 KANSAS CITY STREET, SUITE 4, RAPID CITY, SD 57701  
 PHONE: (605) 348-0538 FAX: (605) 348-0545 WWW.DREAMDESIGNINC.COM

**Rapid City Growth Management Department**

**GATEWAY APARTMENTS**  
 RAPID CITY, SOUTH DAKOTA

PLANTING PLAN

31 Sheet Number of 41