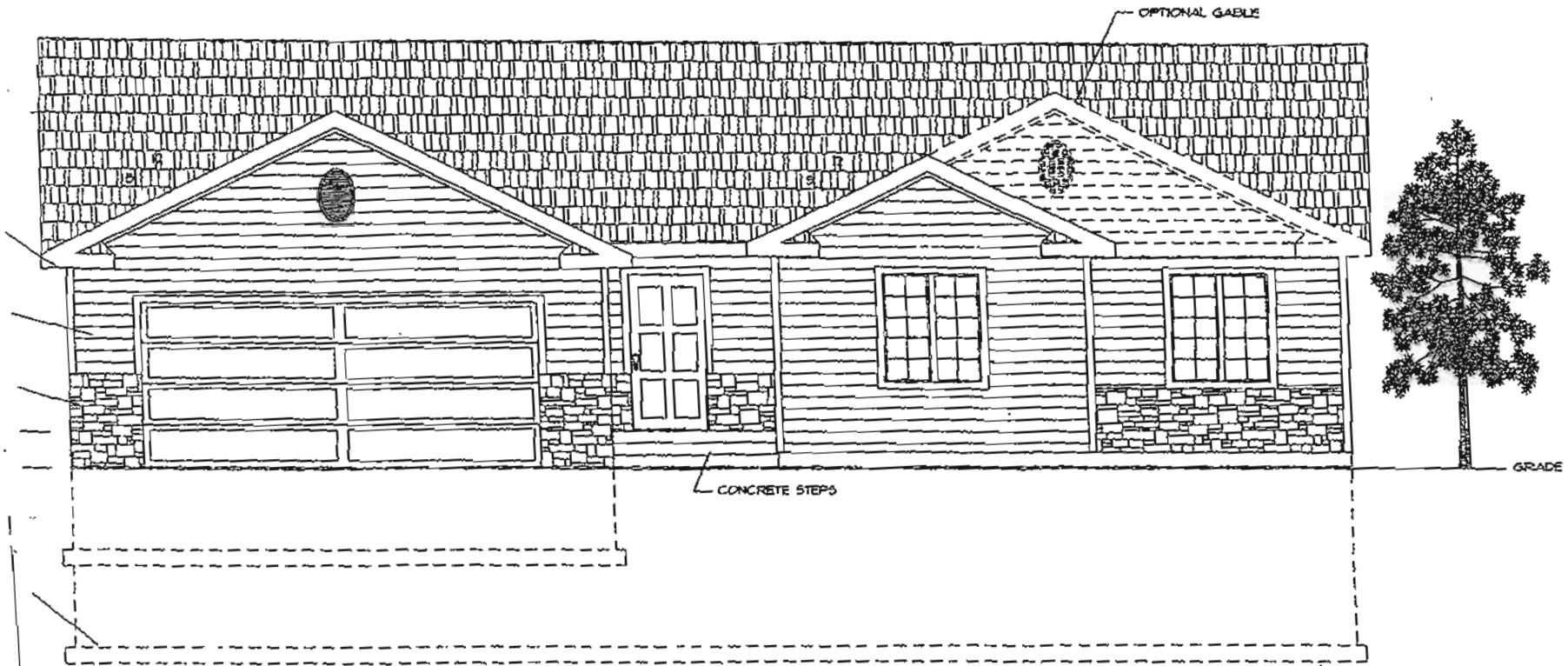


RECEIVED

SEP 02 2011

Rapid City Growth
Management Department

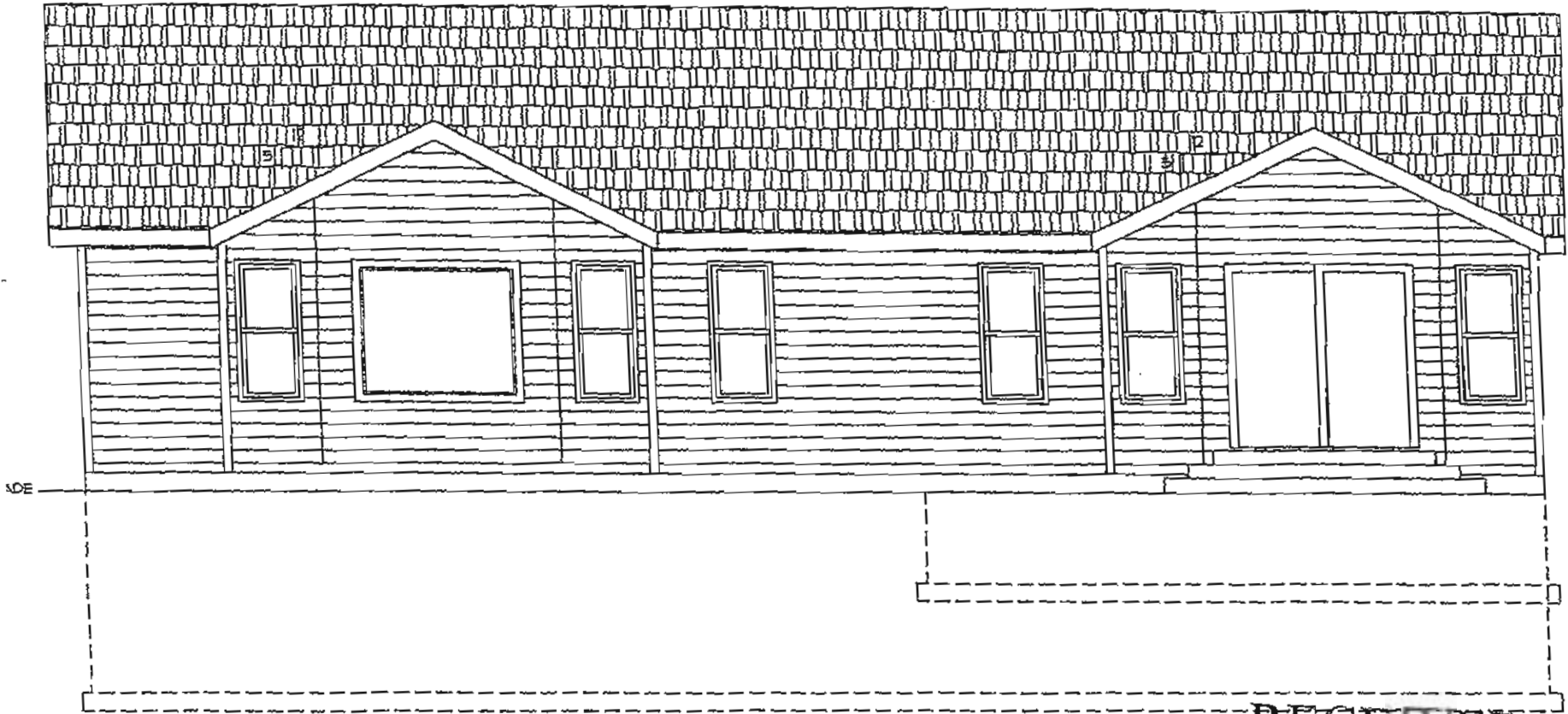


FRONT ELEVATION

SCALE: 1/4"=1'-0"

SHEET LEGEND

1547 St. A



RECEIVED

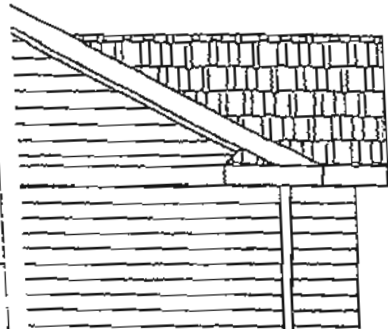
REAR ELEVATION

SCALE: 3/16"=1'-0"

SEP 02 2011

Rapid City Growth
Management Department

1547 Sq. ft.



ELEVATION NOTES

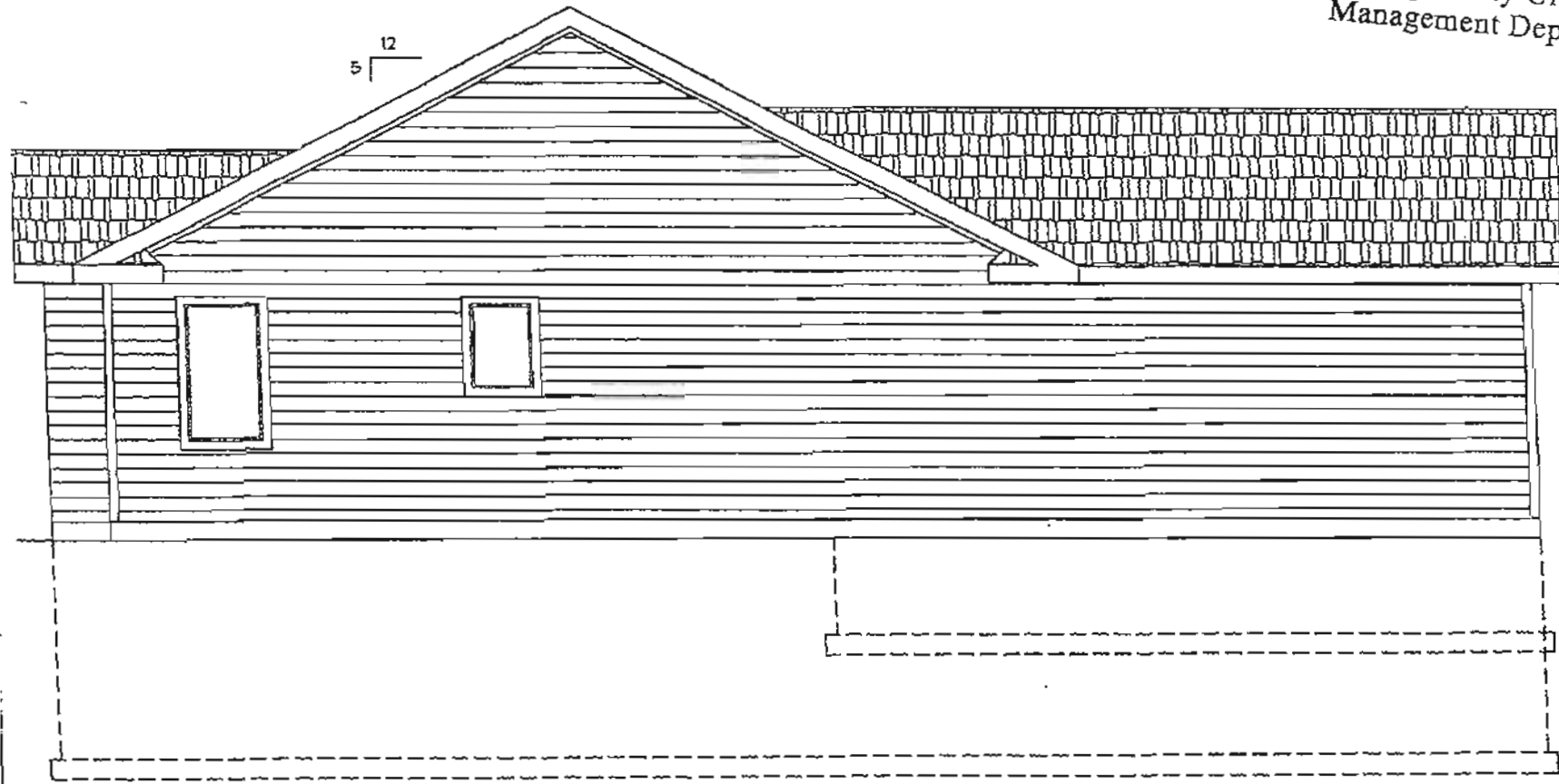
- 1. SEE SHEET 5 FOR MATERIAL INFORMATION & VERTICAL DIMENSIONS

2. ALL GRADE AT BUILDING EDGES IS TENTATIVE AND MAY VARY BASED ON ACTUAL SITE TOPOGRAPHY

RECEIVED

SEP 02 2011

Rapid City Growth Management Department



LEFT ELEVATION

SCALE: 3/16"=1'-0"

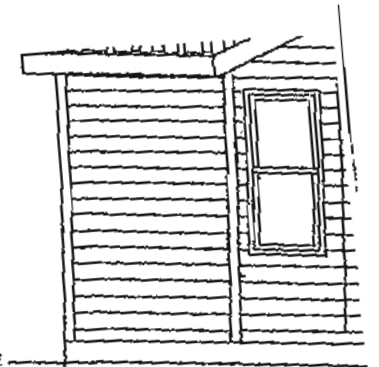
1547 Sq. Ft.

THIS DRAWING IS AN INSTRUMENT OF SERVICE AND MAY NOT BE ALTERED, REPRODUCED, OR COPIED WITHOUT THE WRITTEN PERMISSION OF COMPLETE CAD SERVICES. WHILE EVERY ATTEMPT HAS BEEN MADE TO AVOID ERROR DURING THE PREPARATION OF THIS PLAN, COMPLETE CAD SERVICES CANNOT GUARANTEE AGAINST MISTAKES. THE GENERAL CONTRACTOR SHALL CHECK ALL DIMENSIONS AND OTHER DETAILS AND BE RESPONSIBLE FOR THE SAME.

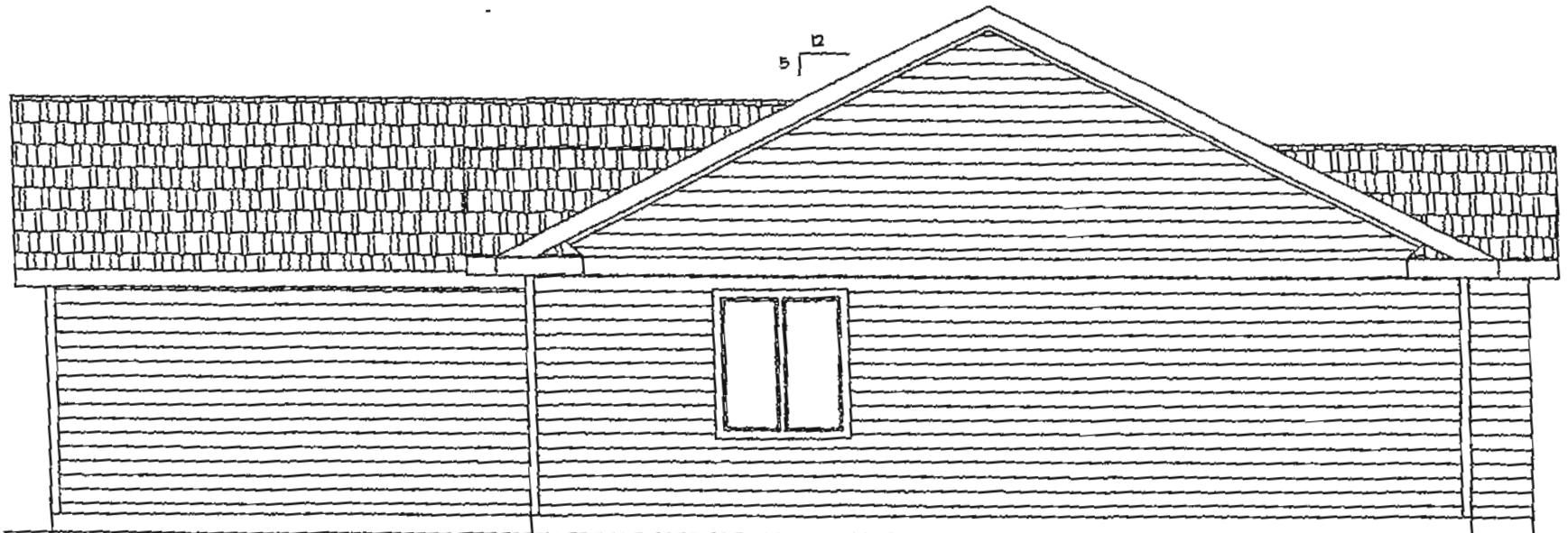
RECEIVED

SEP 02 2011

Rapid City Growth
Management Department



GRADE



5/12

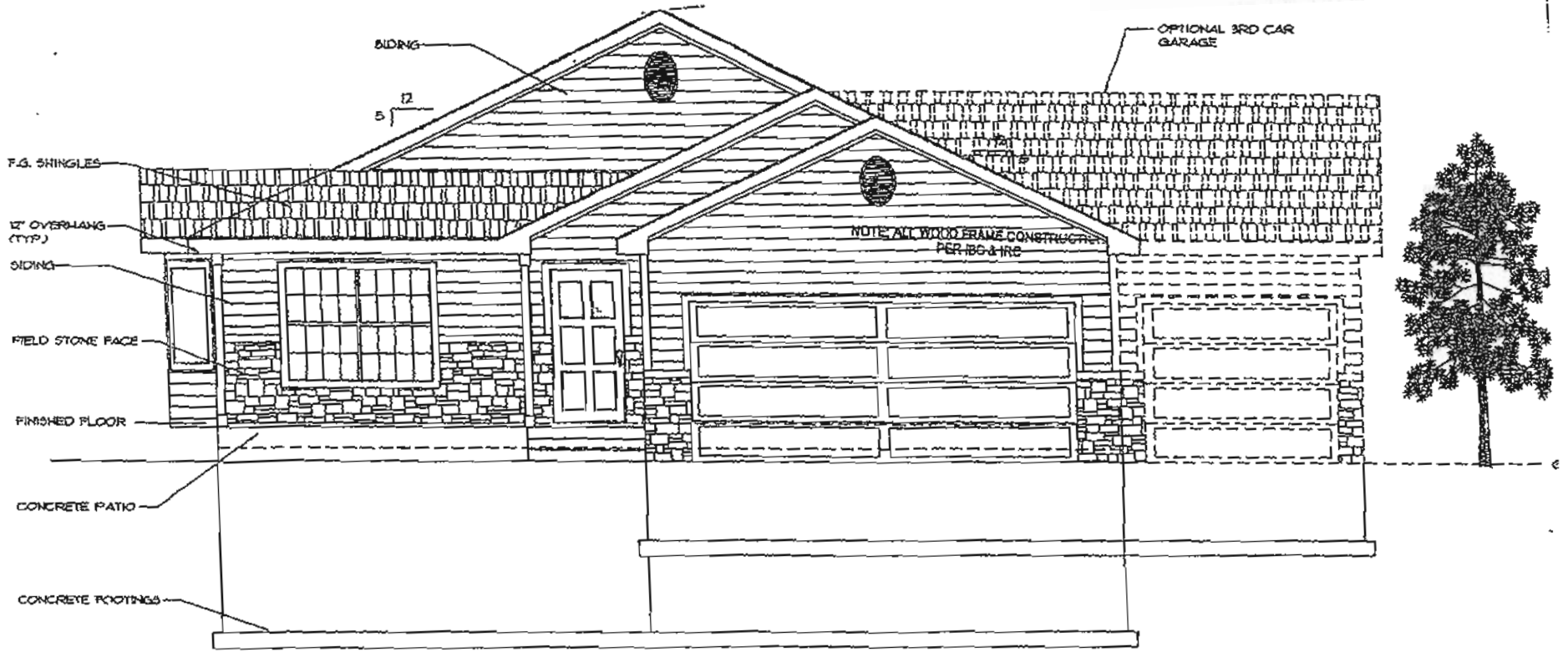
GRADE

1547 So. A.

RECEIVED

SEP 02 2011

Rapid City Growth
Management Department

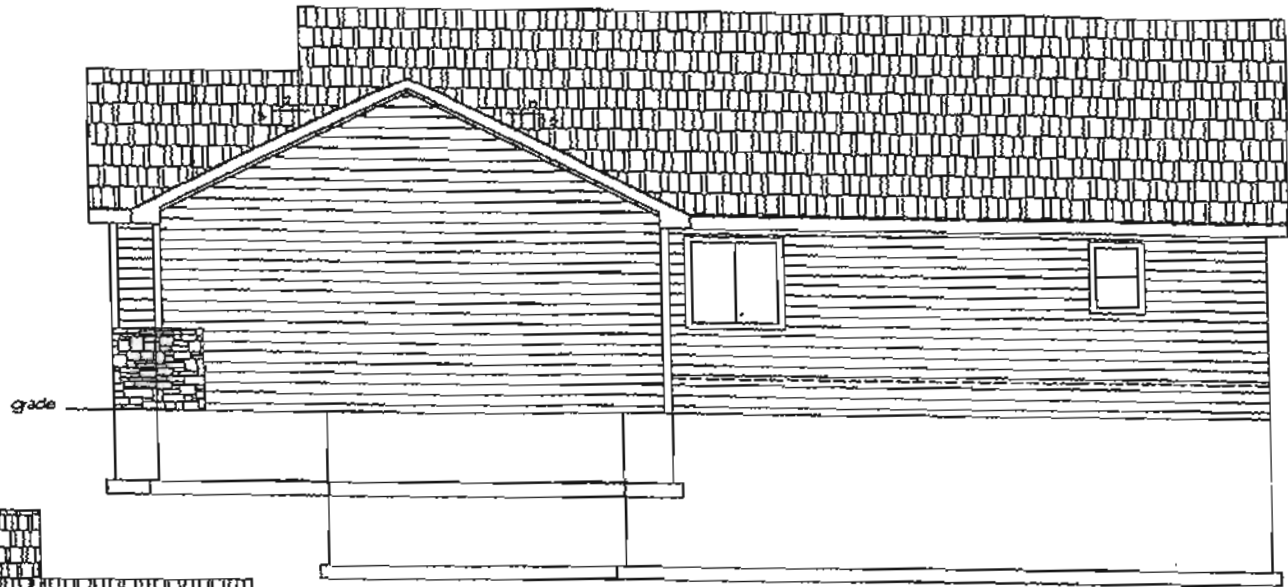


FRONT ELEVATION
SCALE 1/4"=1'-0"

CONSTRUCTION SHALL
COMPLY WITH
INTERNATIONAL
RESIDENTIAL CODE

NOTE: THESE PLANS ARE NOT
REVIEWED FOR COMPLIANCE
WITH MECHANICAL, ELECTRIC
OR PLUMBING CODES
CONTACT FIELD INSPECTORS
ABOUT THESE CODES.

1106 Sq. Ft.

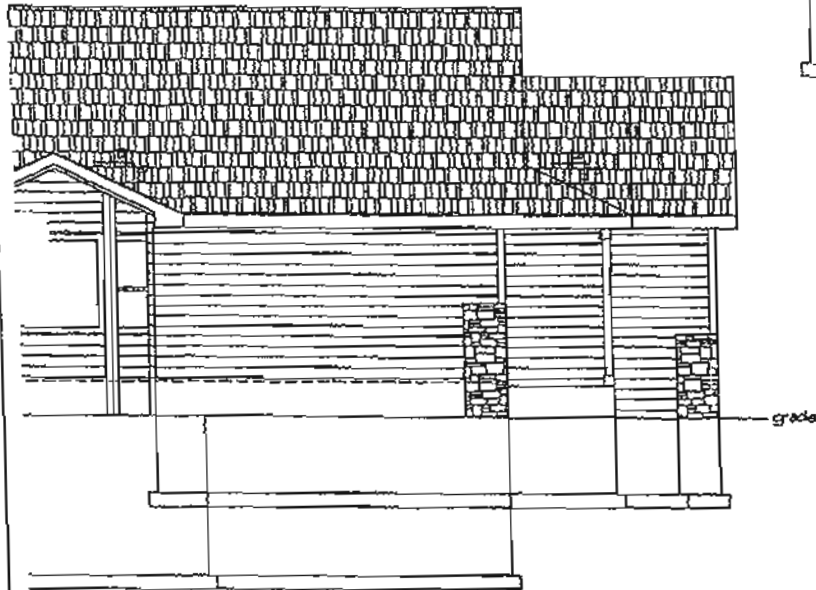


RIGHT ELEVATION
SCALE 3/16"=1'-0"

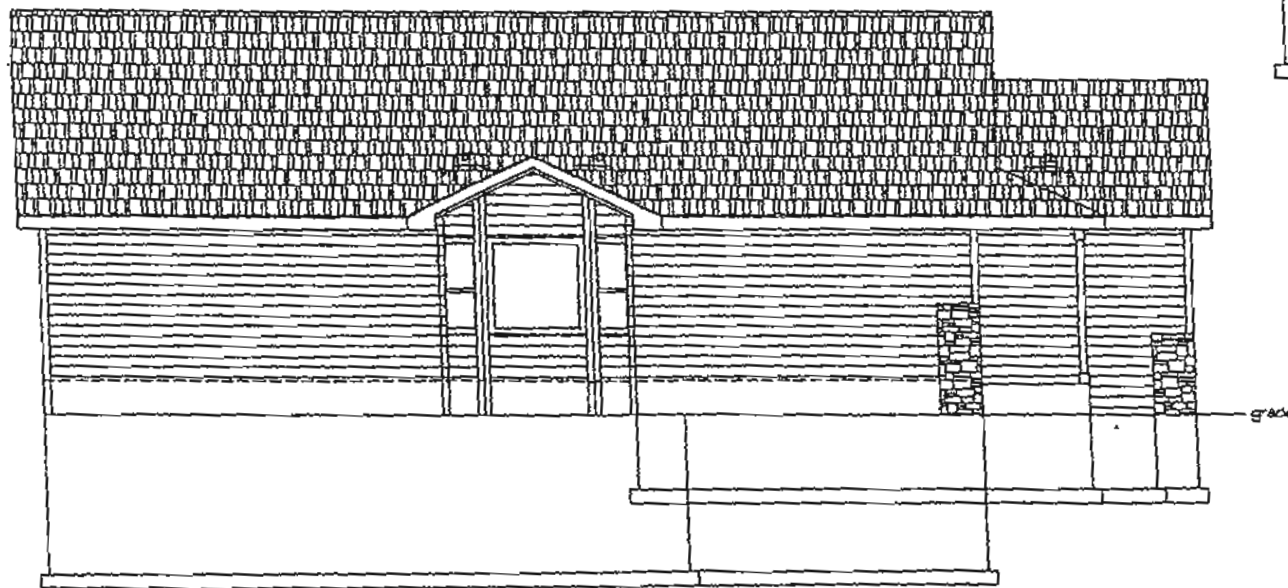
RECEIVED

SEP 02 2011

Rapid City Growth
Management Department

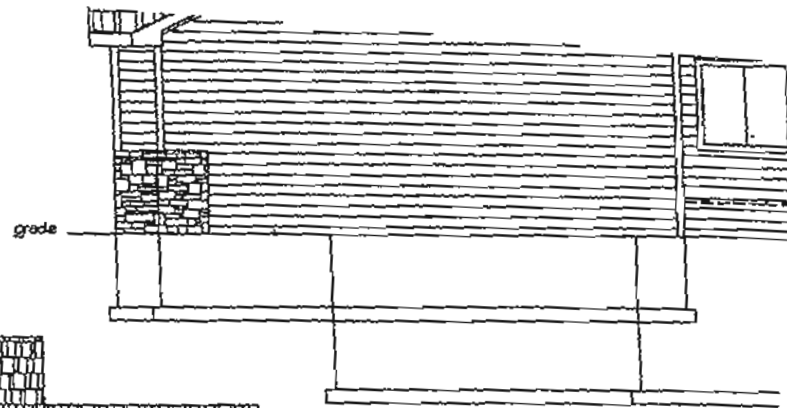


disc 52.4



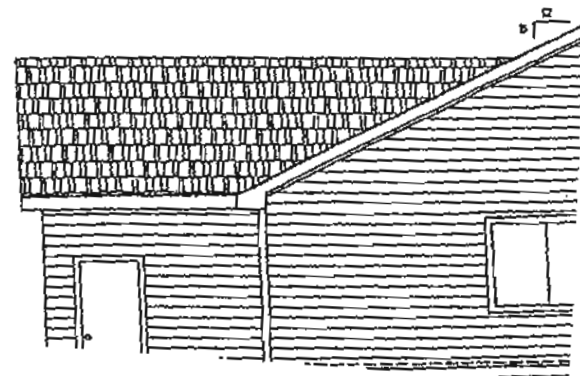
LEFT ELEVATION

SCALE: 3/16" = 1'-0"

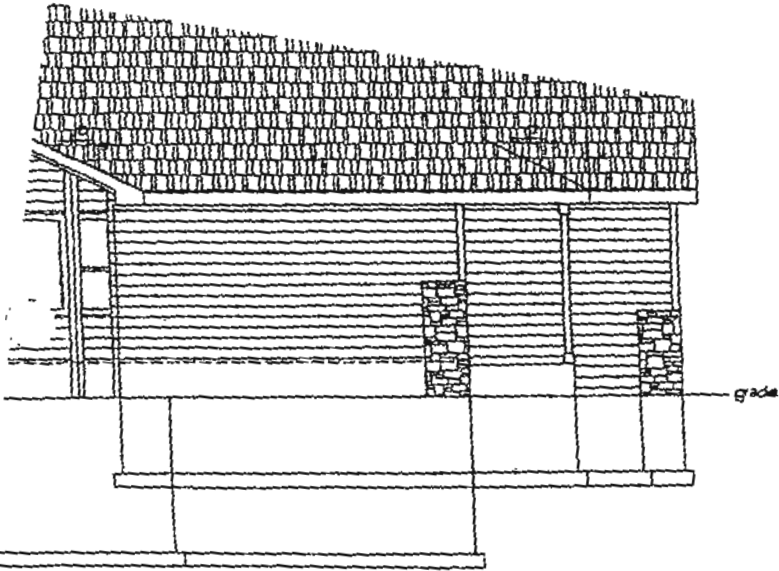


RIGHT ELEV
RECEIVED

SEP 02 2011
Rapid City Growth
Management Department



1406 Sq. Ft.

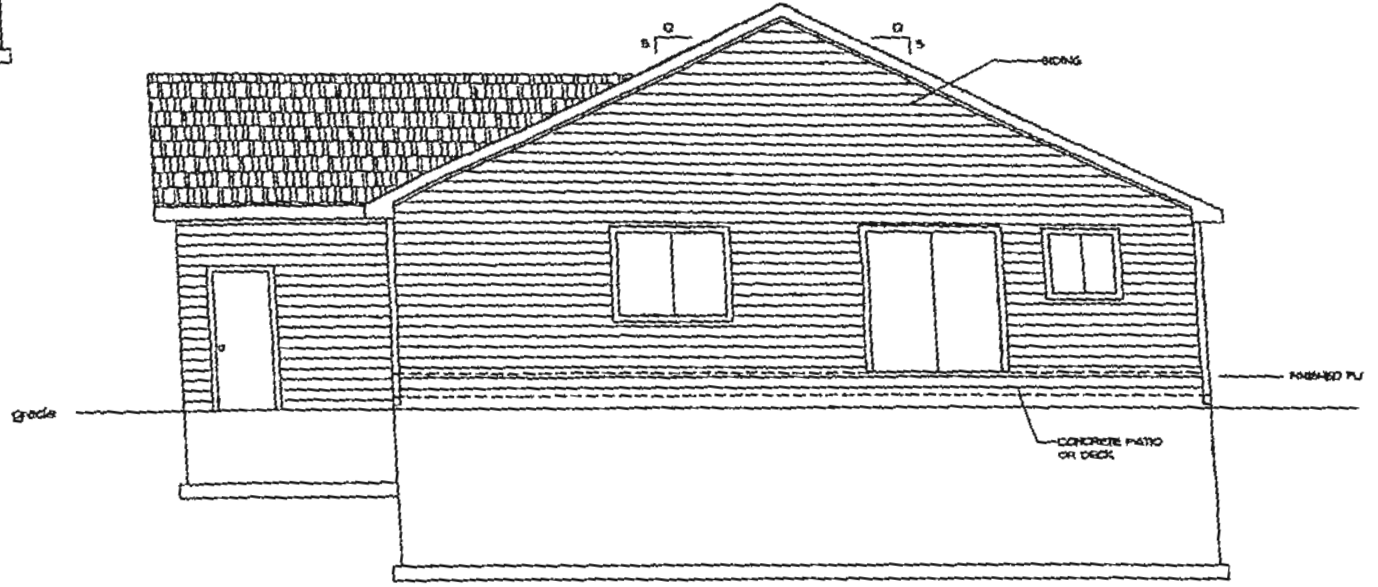


ELEVATION

RECEIVED

SEP 02 2011

Rapid City Growth
Management Department



REAR ELEVATION

SCALE: 3/16"=1'-0"

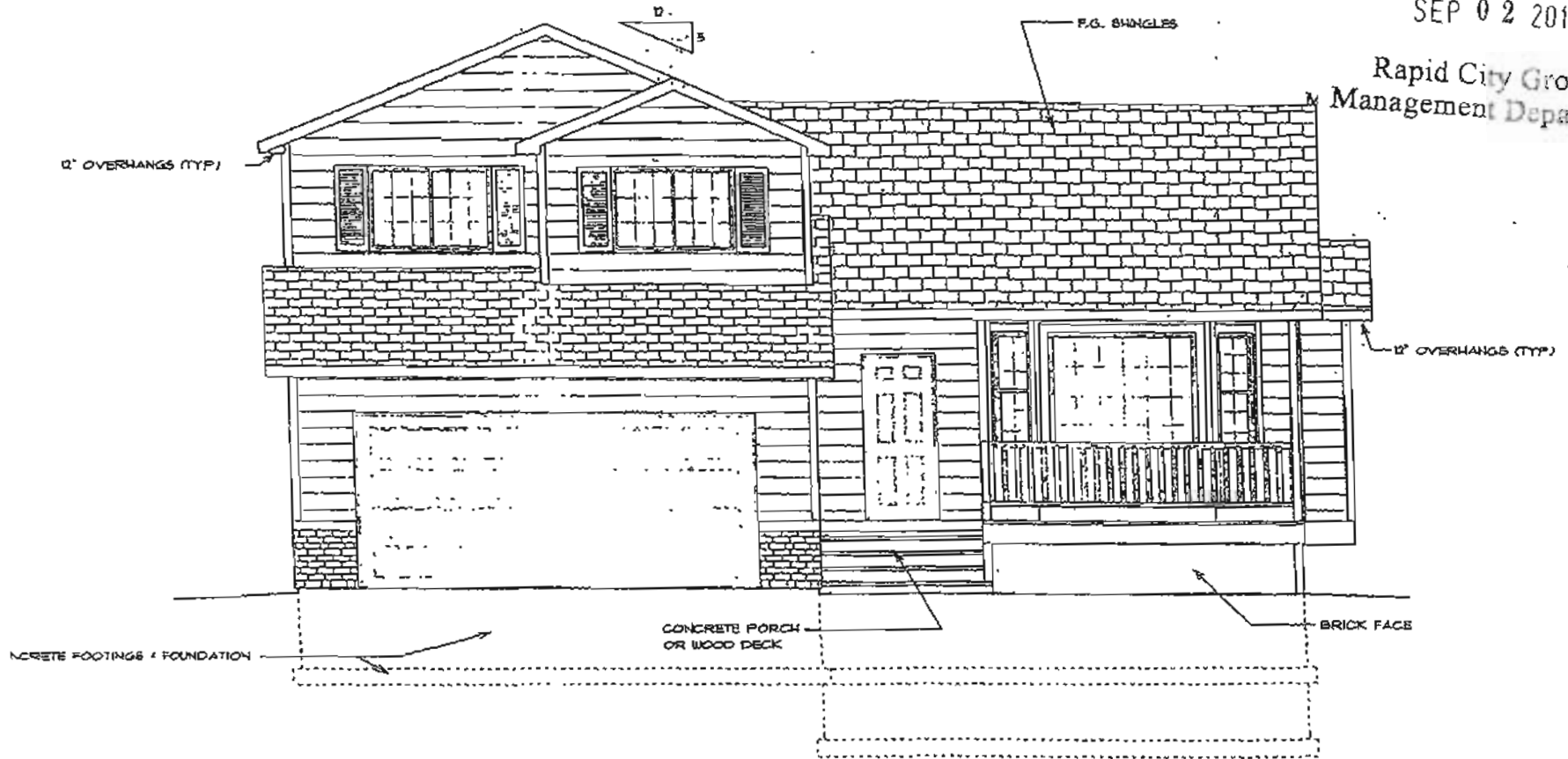
THIS DRAWING IS AN INSTRUMENT OF SERVICE AND MAY NOT BE REPRODUCED, COPIED, REPRODUCED, OR COPIED WITHOUT THE WRITTEN PERMISSION OF COMPLETE CAD SERVICES. WHILE EVERY ATTEMPT HAS BEEN MADE TO AVOID ERRORS DURING THE PREPARATION OF THIS PLAN, COMPLETE CAD SERVICES CANNOT GUARANTEE IN ANY MANNER. THE GENERAL CONTRACTOR SHALL CHECK ALL OF THE DETAILS AND BE RESPONSIBLE FOR THE SAME.



RECEIVED

SEP 02 2011

Rapid City Growth
Management Department



FRONT ELEVATION

SCALE: 1/4" = 1'-0"

1340 S.E.

NOTE: SEE SECTIONS SHEET 6
FOR ALL VERTICAL DIMENSIONS
AND ADDITIONAL MATERIAL
INFORMATION

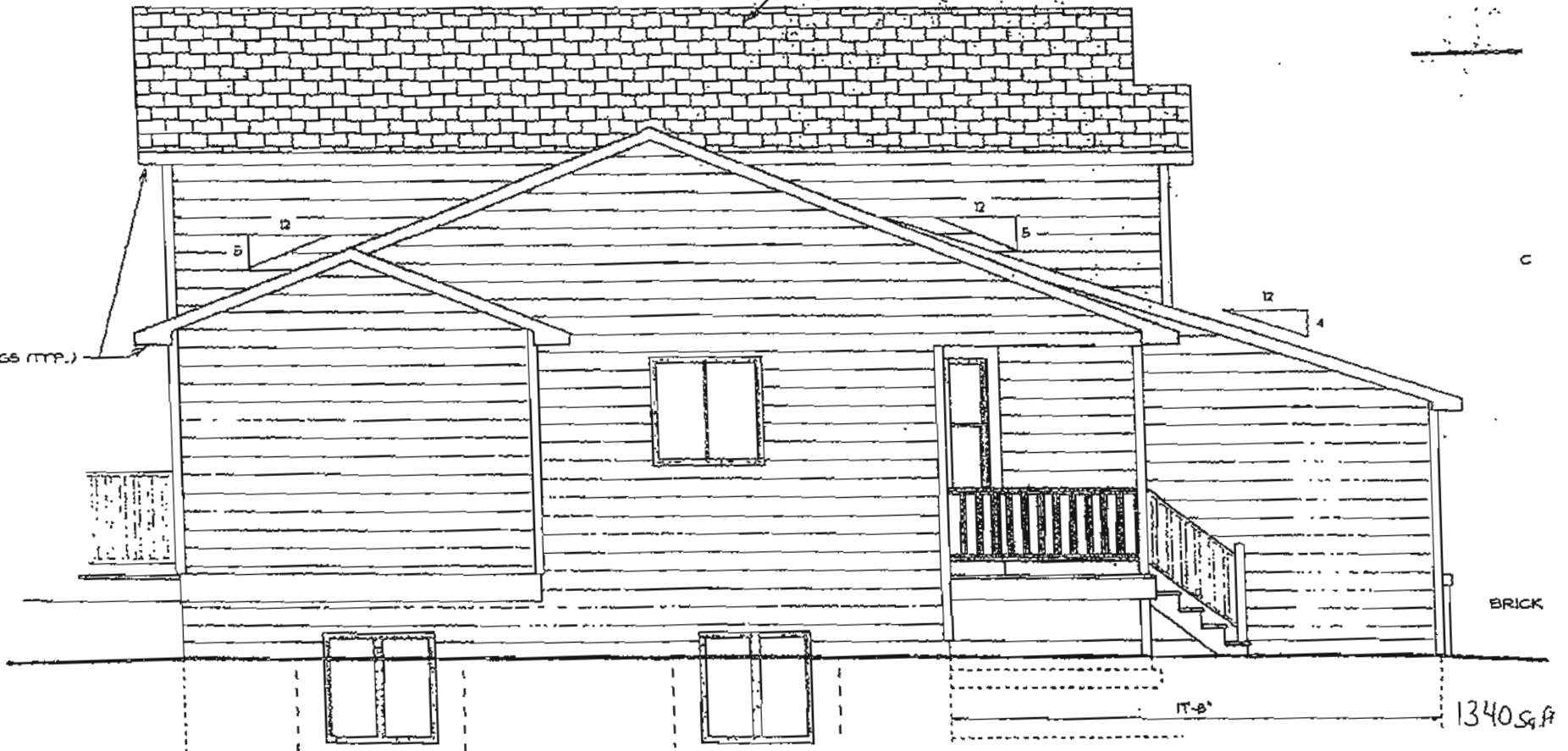
RECEIVED

SEP 02 2011 12" OVERHANGS (TYP.)

Rapid City Growth Management Department

GLASS FIBER SHINGLES

12" OVERHANGS (TYP.)



BRICK

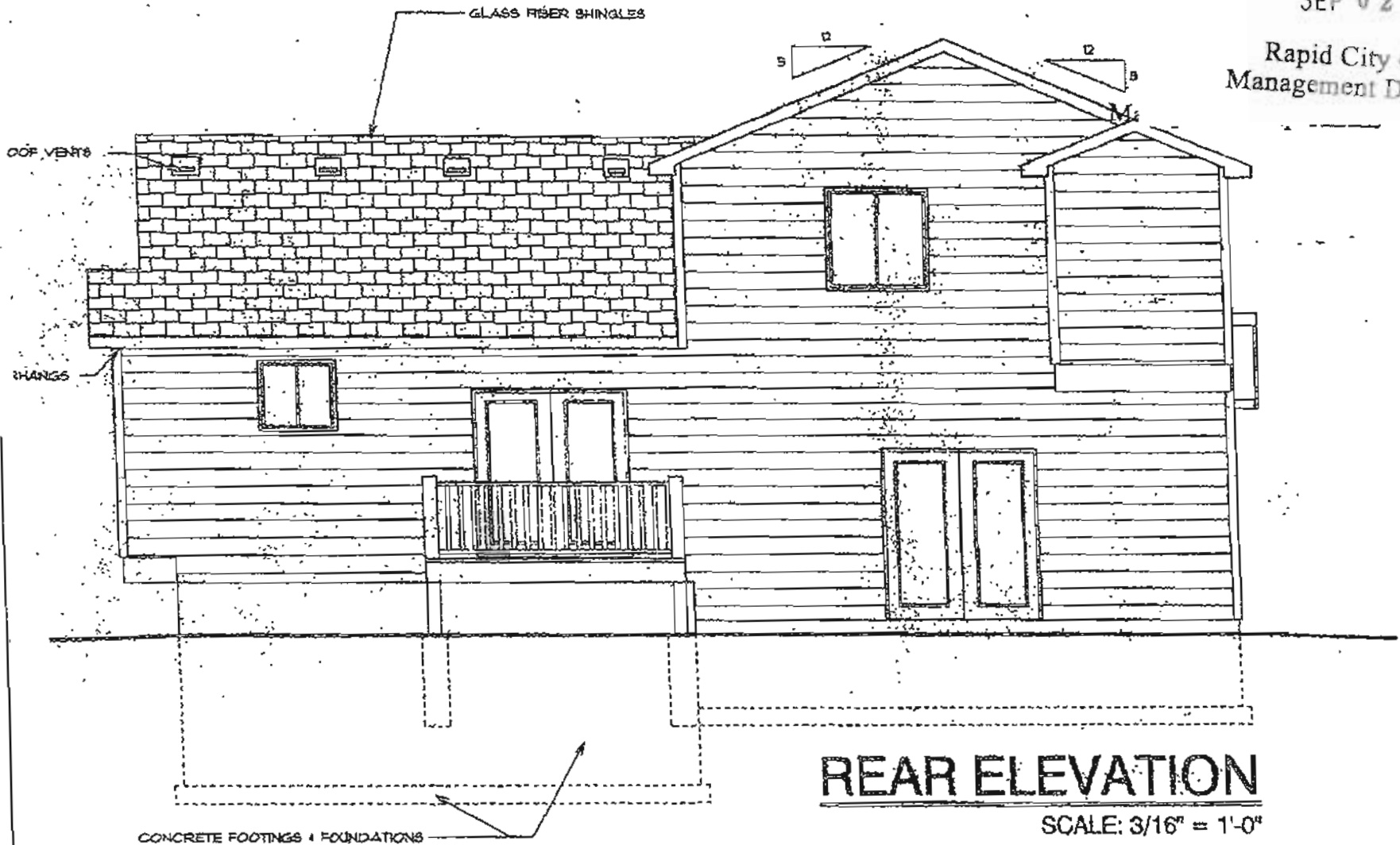
17'-8"

1340 sq. ft.

RECEIVED

SEP 02 2011

Rapid City Growth
Management Department



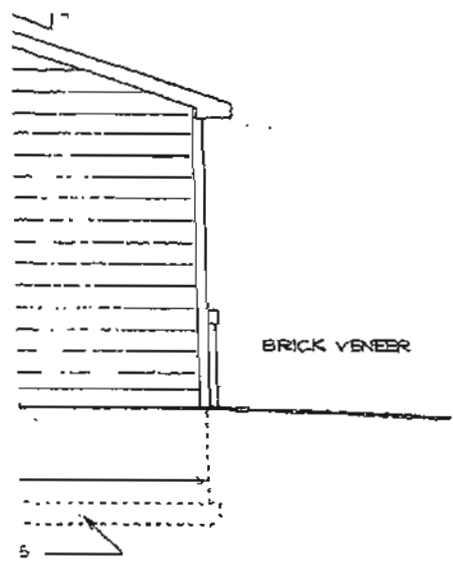
REAR ELEVATION

SCALE: 3/16" = 1'-0"

ELEVATION NOTES:

1340 sq. ft.

Handwritten initials or mark.



ELEVATION NOTES:

1. SEE SECTION SHEET 5 FOR MATERIAL INFORMATION & VERTICAL DIMENSIONS
2. ALL GRADE AT BUILDING EDGE IS TENTATIVE AND MAY VARY BASED ON ACTUAL SITE TOPOGRAPHY

RECEIVED

SEP 02 2011

Rapid City Growth Management Department

