

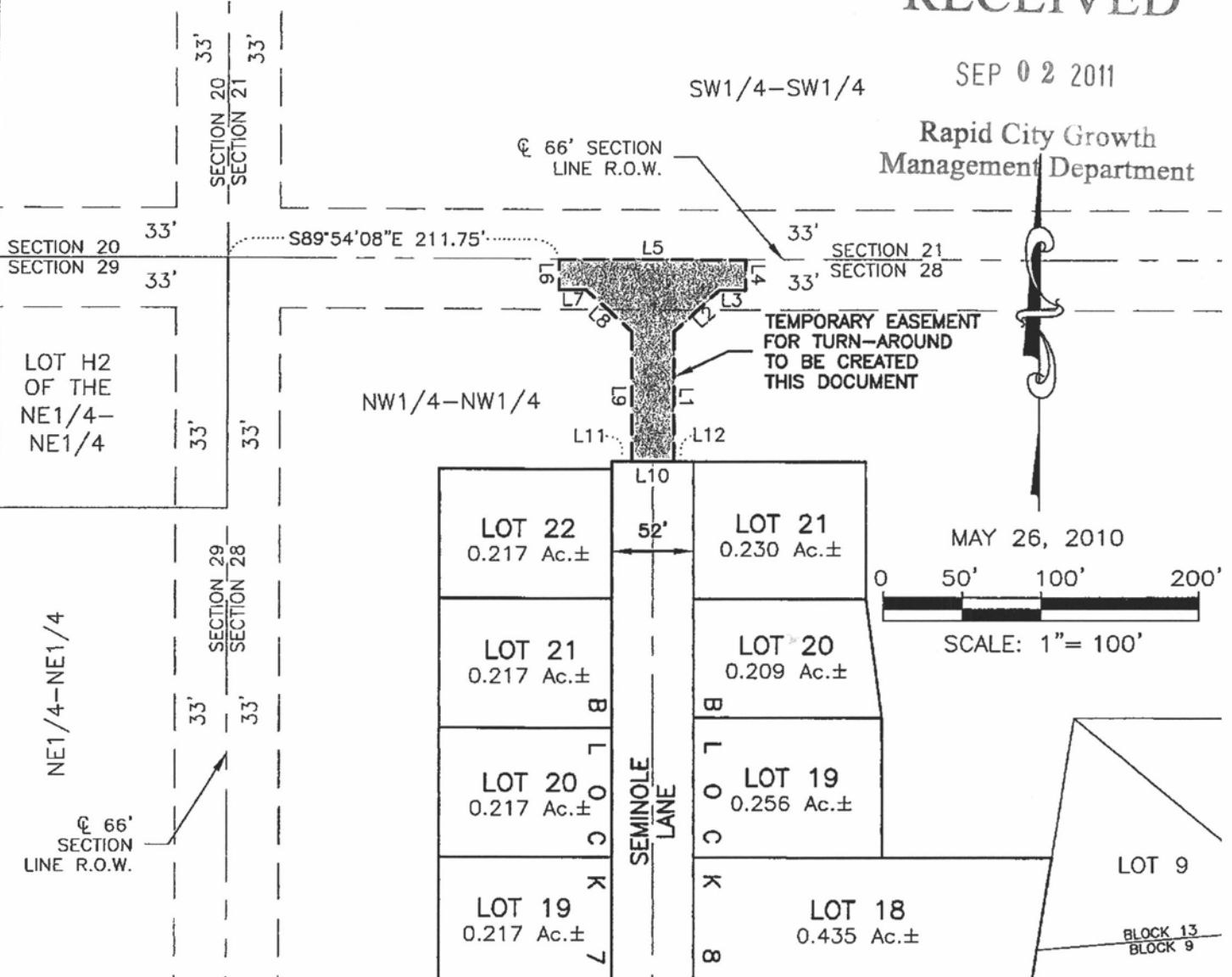
# TEMPORARY EASEMENT FOR TURN-AROUND, NW1/4 OF THE NW1/4 OF SECTION 28

T1N, R7E, BHM  
RAPID CITY, PENNINGTON COUNTY, SOUTH DAKOTA

RECEIVED

SEP 02 2011

Rapid City Growth  
Management Department



LINE	LENGTH	BEARING
L1	86.00'	S00°19'45"E
L2	39.99'	S47°12'31"W
L3	17.00'	N89°54'08"W
L4	20.00'	S00°19'45"E
L5	120.00'	S89°54'08"E
L6	20.00'	N00°19'45"W

LINE	LENGTH	BEARING
L7	17.00'	N89°54'08"W
L8	40.29'	N47°23'34"W
L9	86.00'	N00°19'45"W
L10	27.00'	N89°55'41"W
L11	12.50'	N89°55'41"W
L12	12.50'	N89°55'41"W

## RENNER & ASSOCIATES, LLC.

616 SIXTH ST. \* RAPID CITY, SD 57701  
PHONE: 605/721-7310 \* FAX: 605/721-7313  
EMAIL: GARY@RENNERASSOC.COM

