

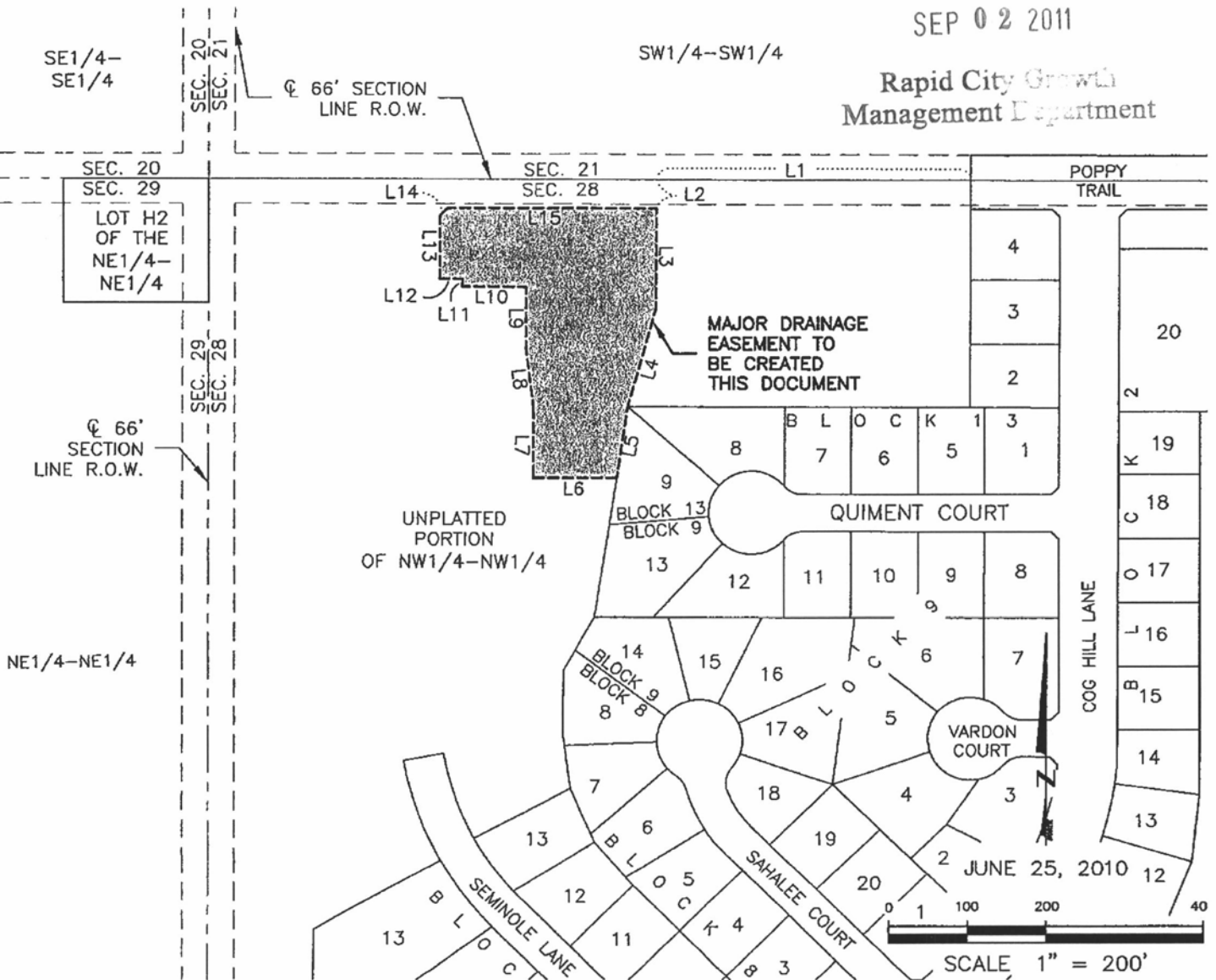
MAJOR DRAINAGE EASEMENT, NW1/4 OF THE NW1/4 OF SECTION 28

T1N, R7E, BHM
RAPID CITY, PENNINGTON COUNTY, SOUTH DAKOTA

RECEIVED

SEP 02 2011

Rapid City Growth
Management Department



LINE	LENGTH	BEARING
L1	403.24'	N89°54'08"W
L2	38.00'	S00°05'52"W
L3	132.28'	S00°04'22"W
L4	137.53'	S15°08'20"W
L5	94.04'	S08°37'00"W
L6	107.24'	N89°55'41"W
L7	93.00'	N00°19'45"W
L8	79.70'	N07°32'13"W

LINE	LENGTH	BEARING
L9	81.00'	N00°19'45"W
L10	80.80'	N89°55'41"W
L11	10.00'	N00°04'22"E
L12	29.27'	N89°55'41"W
L13	85.00'	N00°19'45"W
L14	14.38'	N44°52'18"E
L15	269.27'	S89°54'08"E



RENNER & ASSOCIATES, LLC.

616 SIXTH ST. * RAPID CITY, SD 57701
PHONE: 605/721-7310 * FAX: 605/721-7313
EMAIL: GARY@RENNERASSDC.COM

