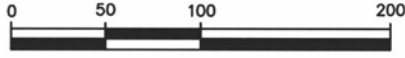


11CA013

METES AND BOUNDS LOT 4 OF BLOCK 3, STONEY CREEK SOUTH SUBDIVISION

LOCATED IN THE SW1/4
SECTION 22, T1N, R7E, BHM
RAPID CITY, PENNINGTON COUNTY, SOUTH DAKOTA

SEPTEMBER 12, 2011



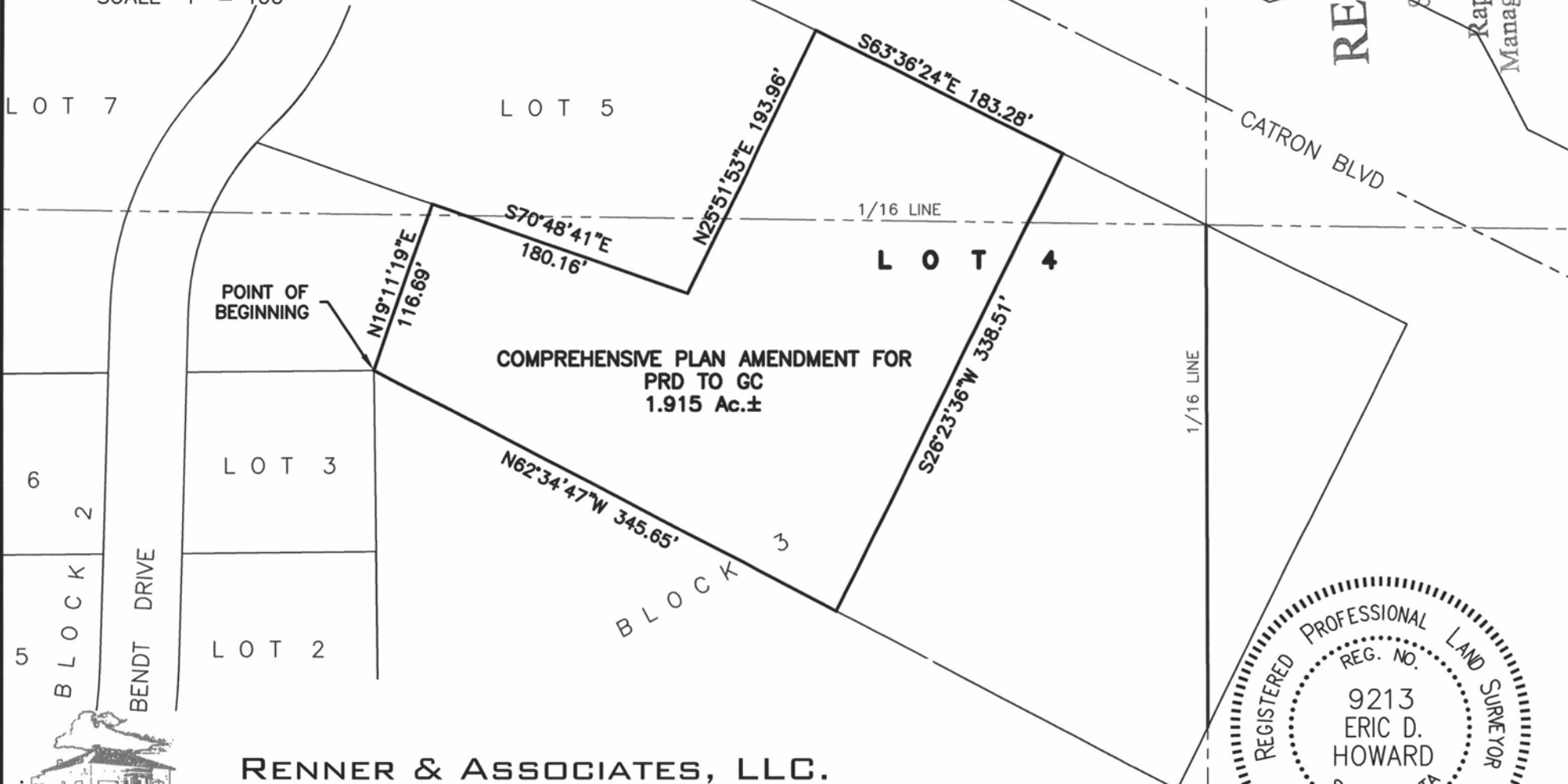
SCALE 1" = 100'



RECEIVED

SEP 15 2011

Rapid City Growth
Management Department



COMPREHENSIVE PLAN AMENDMENT FOR
PRD TO GC
1.915 Ac.±



CITY HALL 1903

RENNER & ASSOCIATES, LLC.

616 SIXTH ST. * RAPID CITY, SD 57701
PHONE: 605/721-7310 FAX: 605/721-7313
SPEARFISH OFFICE: 605/717-0016

