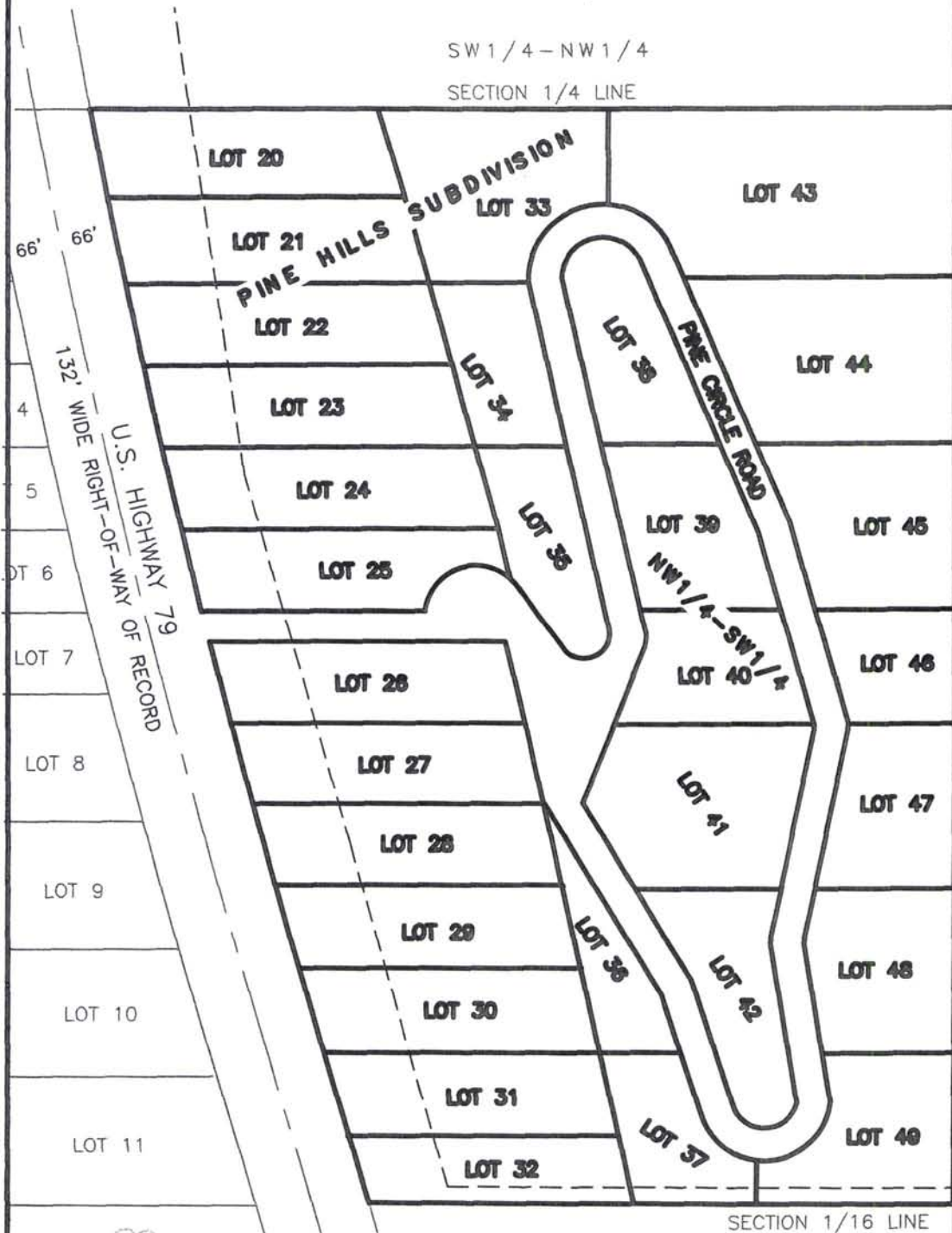


# TO BE ABANDONED LOTS 20 TO 49 OF PINE HILLS SUBDIVISION AND CIRCLE PINE ROAD RIGHT-OF-WAY

LOCATED IN THE NW1/4 OF THE SW1/4 OF  
SECTION 28, T2N, R7E, BHM RAPID CITY, PENNINGTON  
COUNTY, SOUTH DAKOTA



SW 1/4 - NW 1/4  
SECTION 1/4 LINE

SECTION 1/16 LINE

AUGUST 29, 2011

0 100' 200' 400'

SCALE 1" = 200'

TO BE SUBMITTED  
TO THE REGISTER  
OF DEEDS

RECEIVED

SEP 09 2011

Rapid City Growth  
Management Department



**RENNER & ASSOCIATES, LLC.**

616 SIXTH ST. \* RAPID CITY, SD 57701  
PHONE: 605/721-7310 FAX: 605/721-7313  
SPEARFISH OFFICE: 605/717-0016



CITY HALL 1903