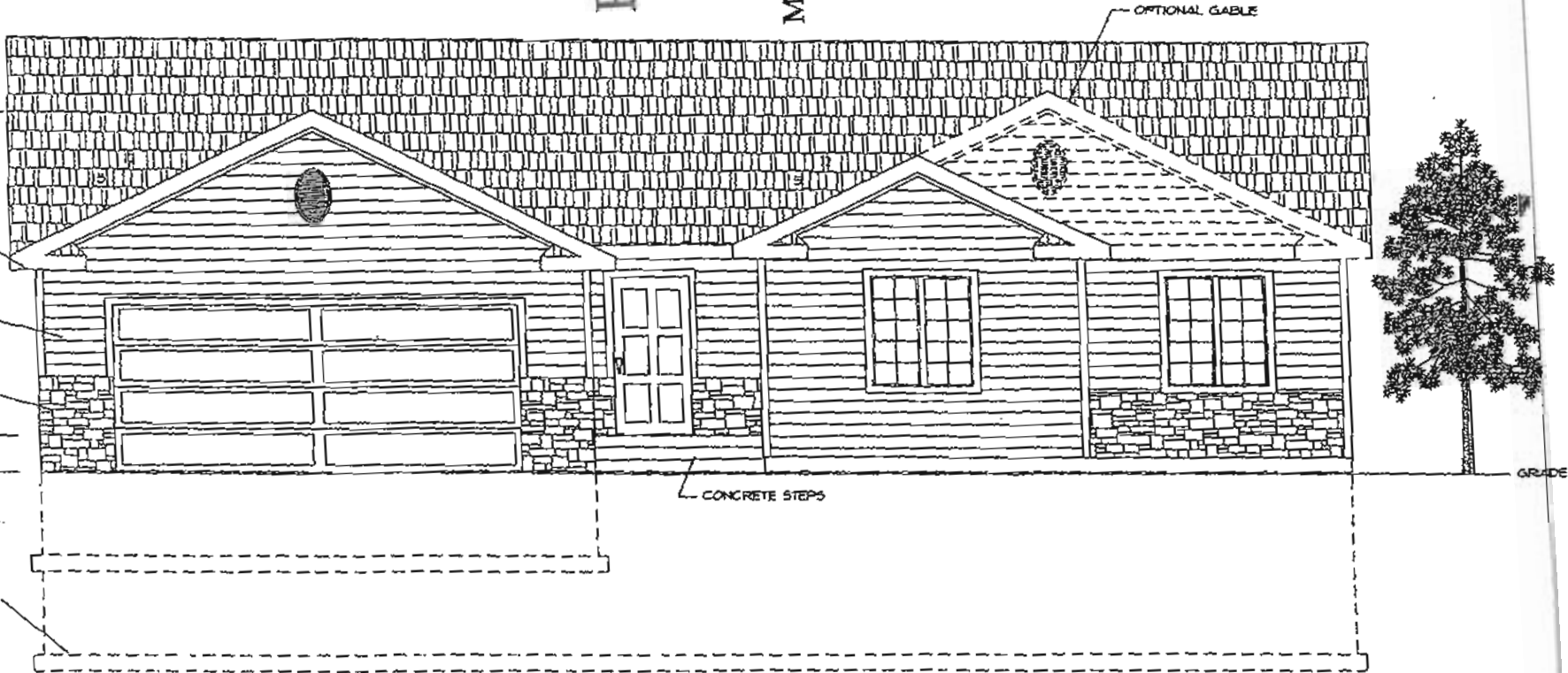


RECEIVED

SEP 02 2011

Rapid City Growth
Management Department

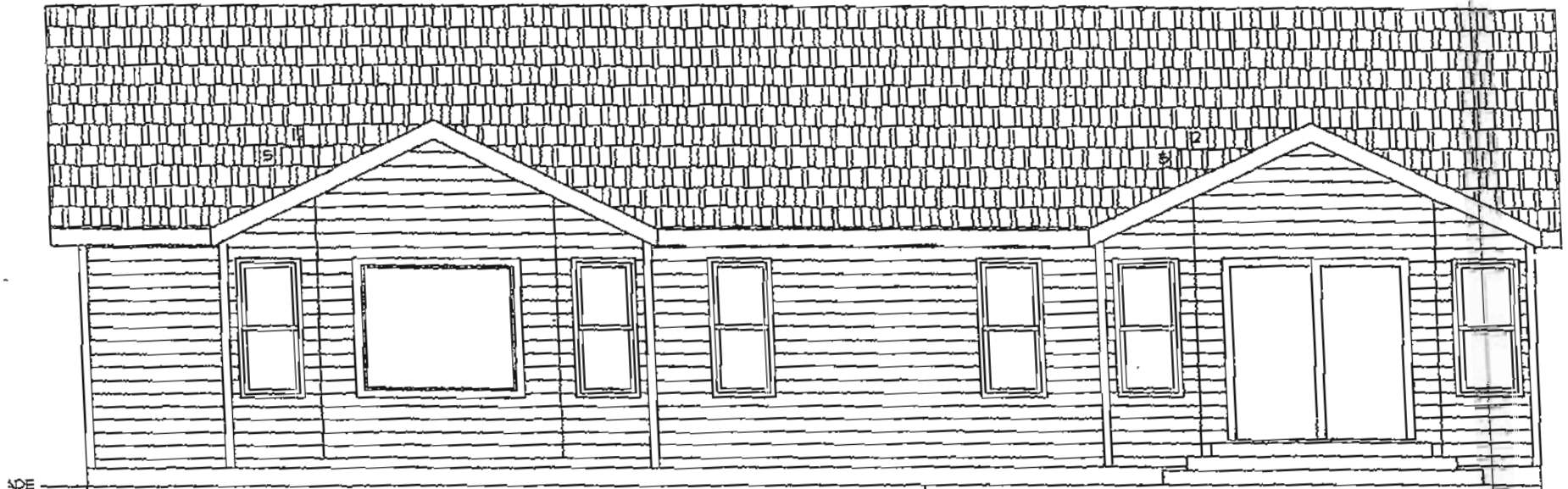


FRONT ELEVATION

SCALE: 1/4"=1'-0"

SHEET LEGEND

1547 S.F.



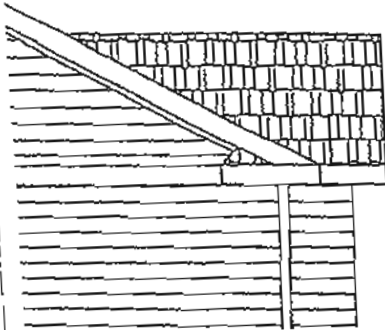
RECEIVED

SEP 02 2011

Rapid City Growth
Management Department

REAR ELEVATION

SCALE: 3/16" = 1'-0"



1547 Sq. Ft.

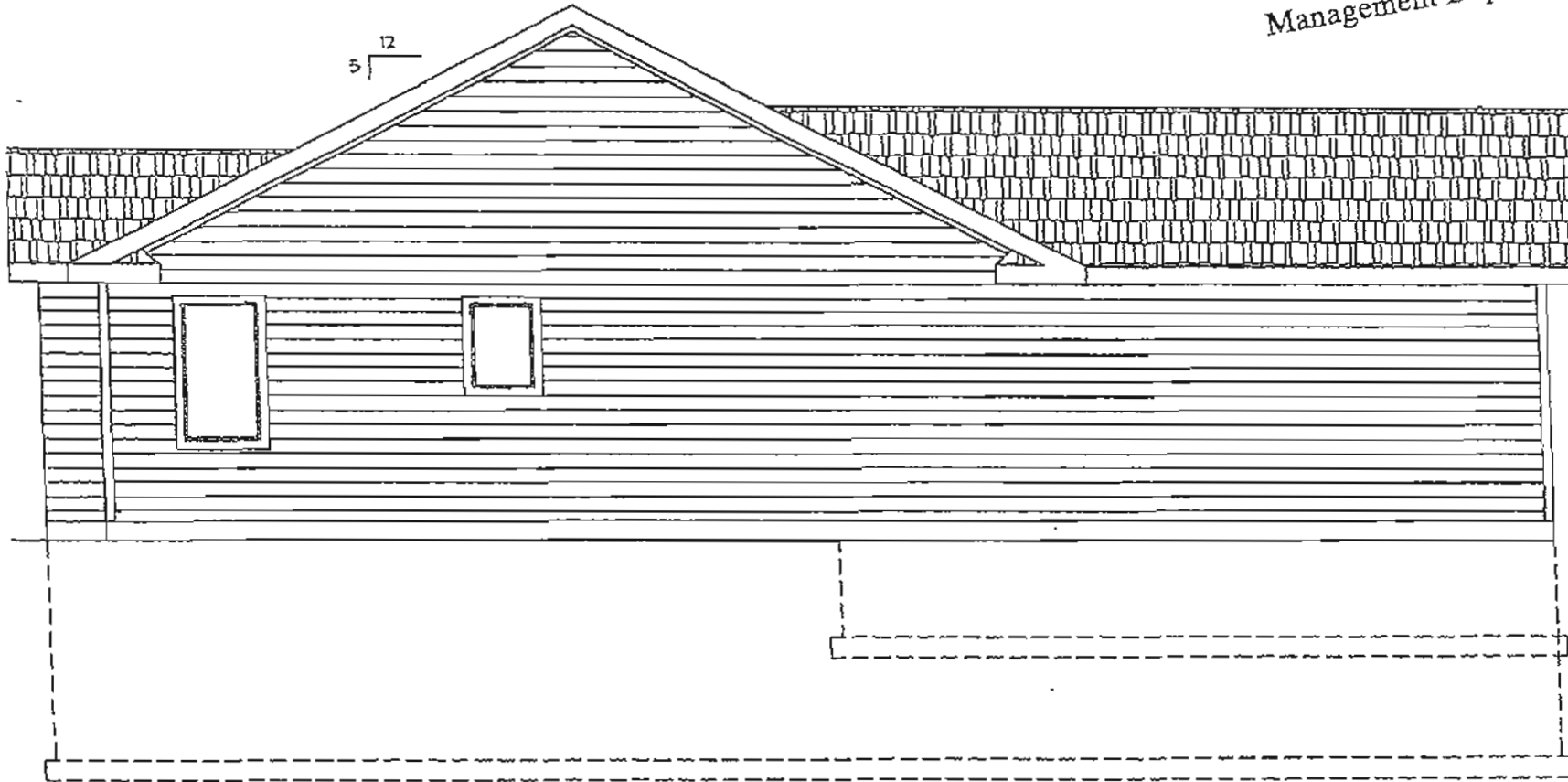
ELEVATION NOTES
 1. SEE SHEET 5 FOR MATERIAL
 INFORMATION & VERTICAL DIMENSIONS

2. ALL GRADE AT BUILDING EDGES IS TENTATIVE
AND MAY VARY BASED ON ACTUAL SITE TOPOGRAPHY

RECEIVED

SEP 02 2011

Rapid City Growth
Management Department



LEFT ELEVATION

SCALE: 3/16"=1'-0"

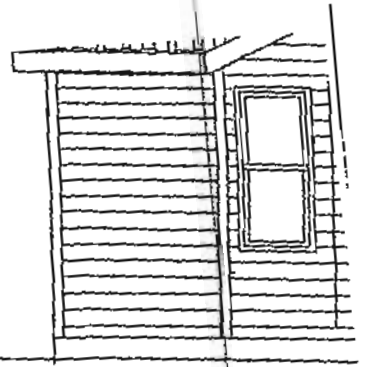
1547 Sq. Ft.

THIS DRAWING IS AN INSTRUMENT OF SERVICE AND MAY NOT BE ALTERED, REPRODUCED, OR COPIED WITHOUT THE WRITTEN PERMISSION OF COMPLETE CAD SERVICES. WHILE EVERY ATTEMPT HAS BEEN MADE TO AVOID ERROR DURING THE PREPARATION OF THIS PLAN, COMPLETE CAD SERVICES CANNOT GUARANTEE AGAINST MISTAKES. THE GENERAL CONTRACTOR SHALL CHECK ALL DIMENSIONS AND OTHER DETAILS AND BE RESPONSIBLE FOR THE SAME.

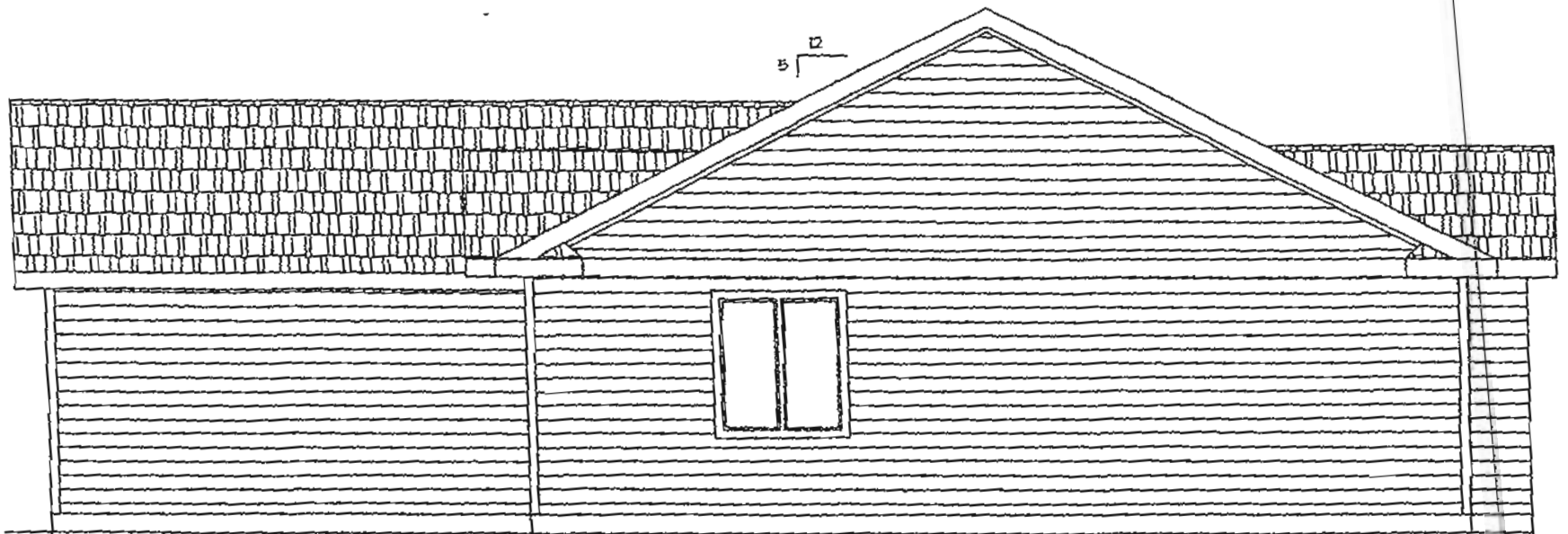
RECEIVED

SEP 02 2011

Rapid City Growth
Management Department

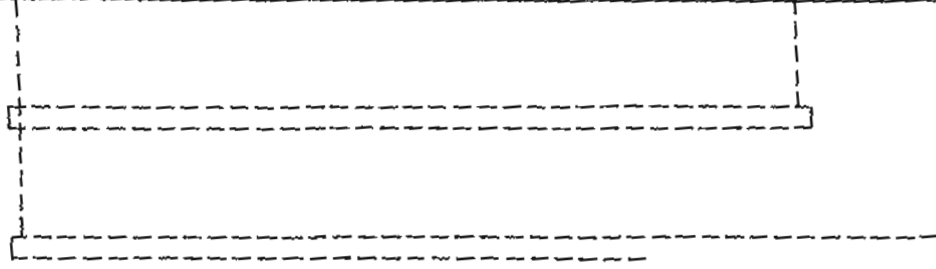


GRADE



5/12

GRADE

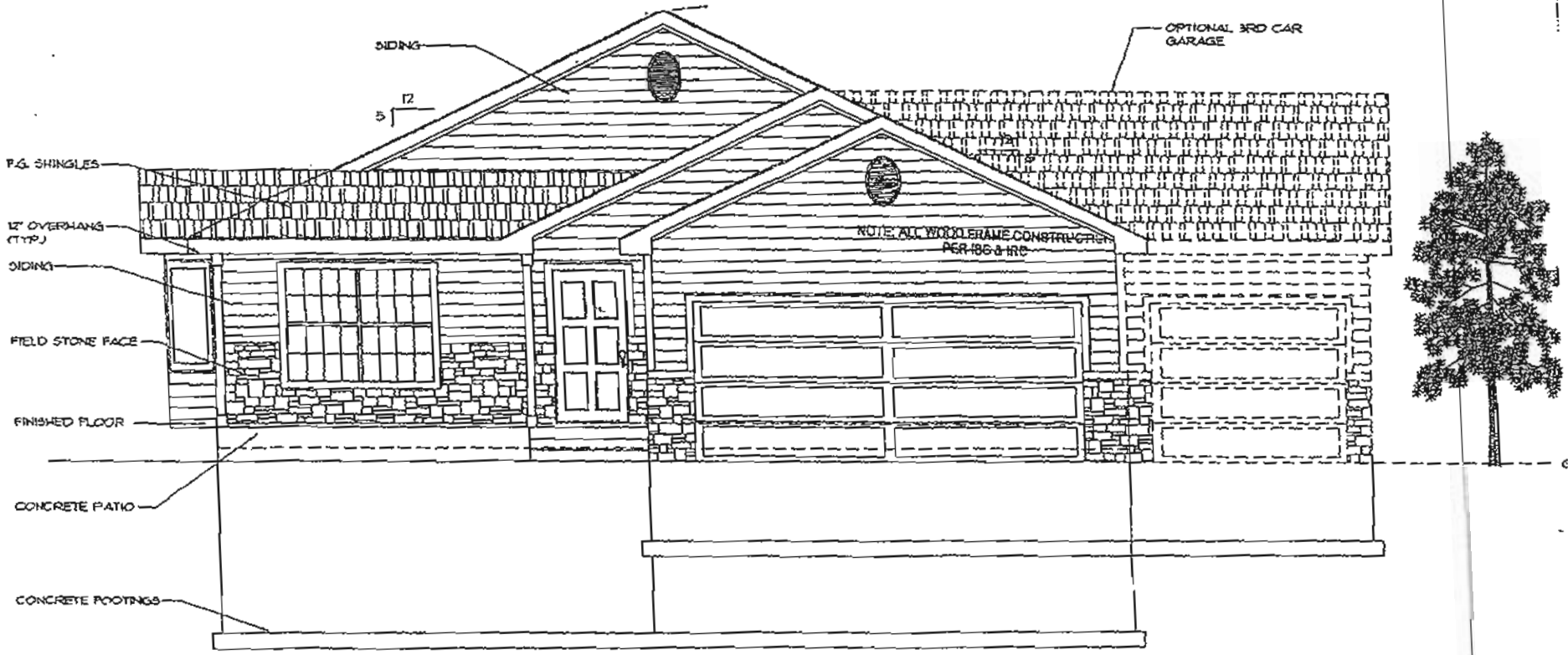


1547 Sq. Ft.

RECEIVED

SEP 02 2011

Rapid City Growth
Management Department



FRONT ELEVATION
SCALE 1/4"=1'-0"

CONSTRUCTION SHALL
COMPLY WITH
INTERNATIONAL
RESIDENTIAL CODE

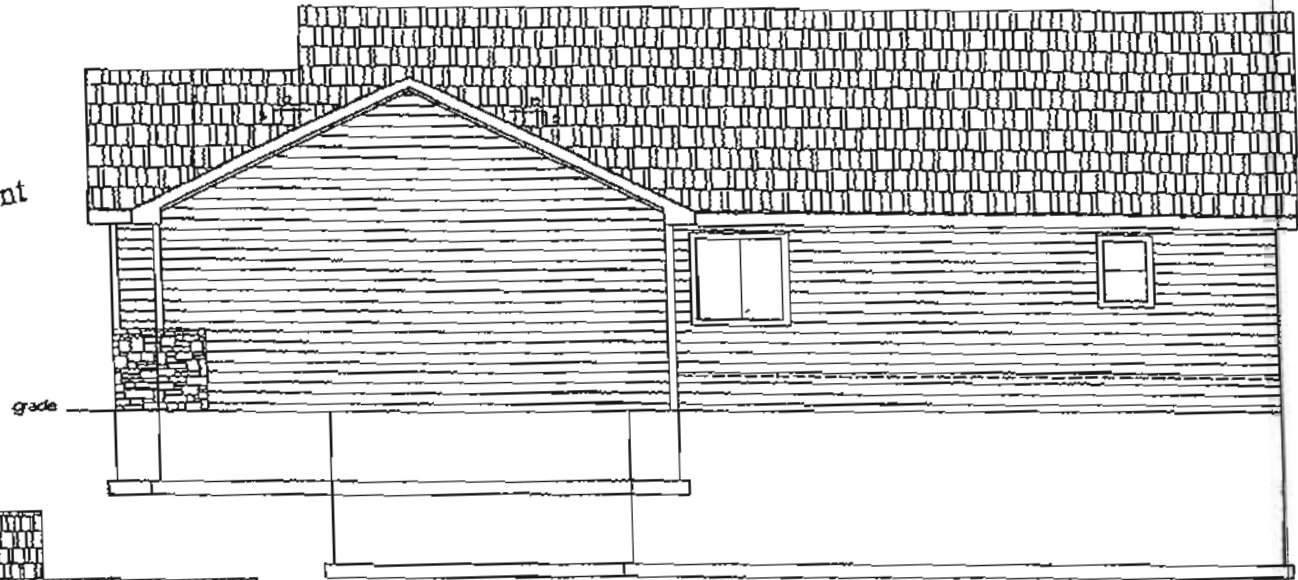
NOTE: THESE PLANS ARE NOT
REVIEWED FOR COMPLIANCE
WITH MECHANICAL, ELECTRIC,
OR PLUMBING CODES.
CONTACT FIELD INSPECTORS
ABOUT THESE CODES.

1106 Sp. C.

RECEIVED

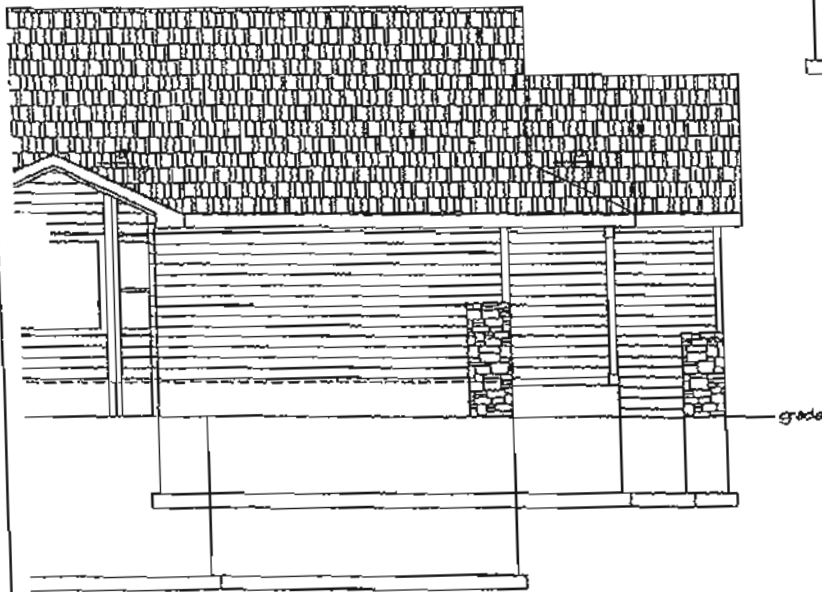
SEP 02 2011

Rapid City Growth
Management Department



RIGHT ELEVATION

SCALE: 3/16"=1'-0"

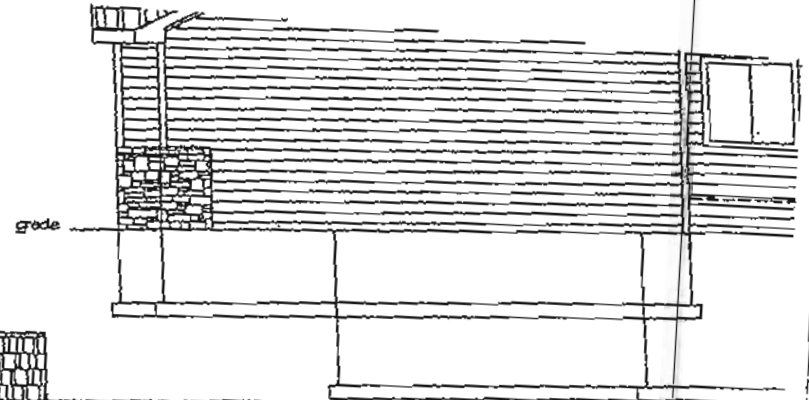


1136 S2.4

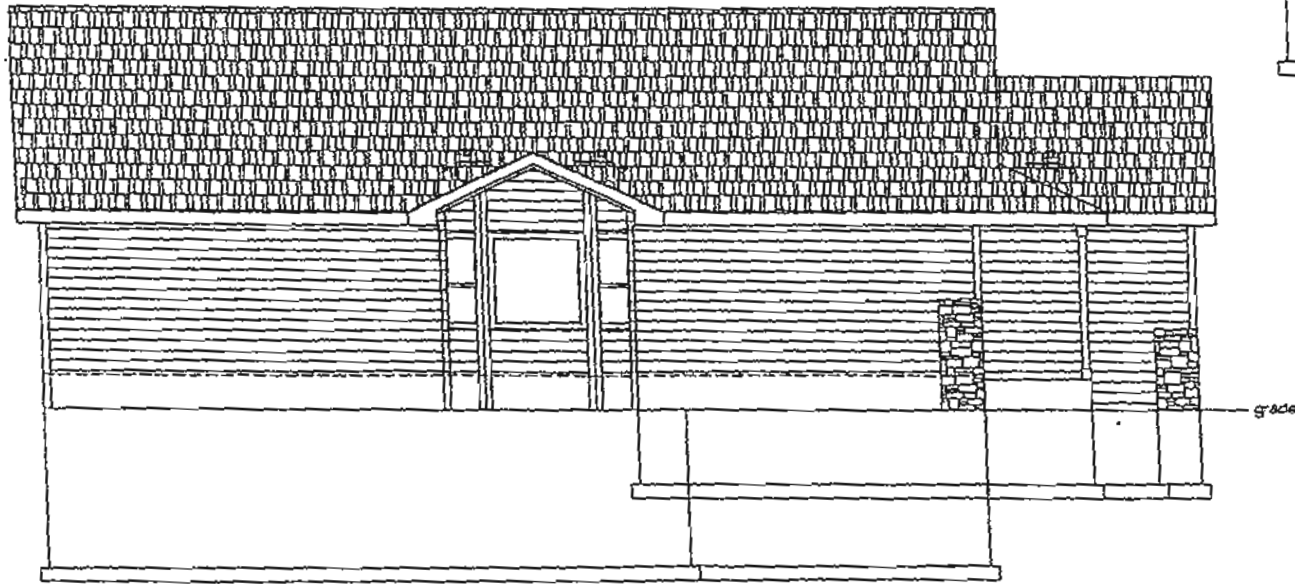
RECEIVED

SEP 02 2011

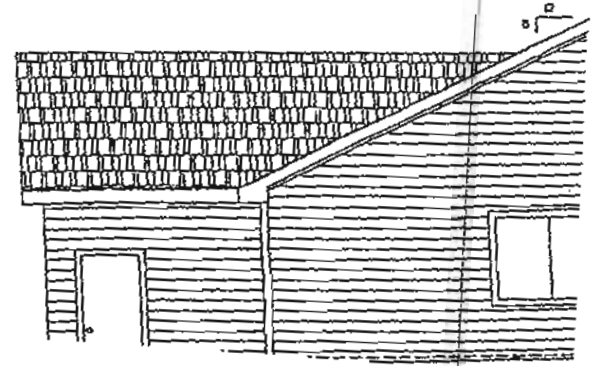
Rapid City Growth
Management Department



RIGHT ELEV
SCALE: 3/16" = 1'-0"



LEFT ELEVATION
SCALE: 3/16" = 1'-0"

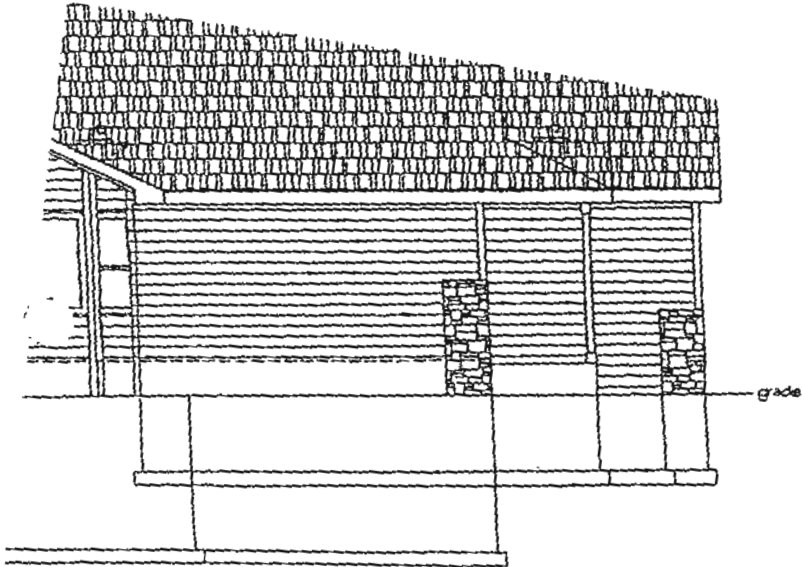


11-06 S.L. 01

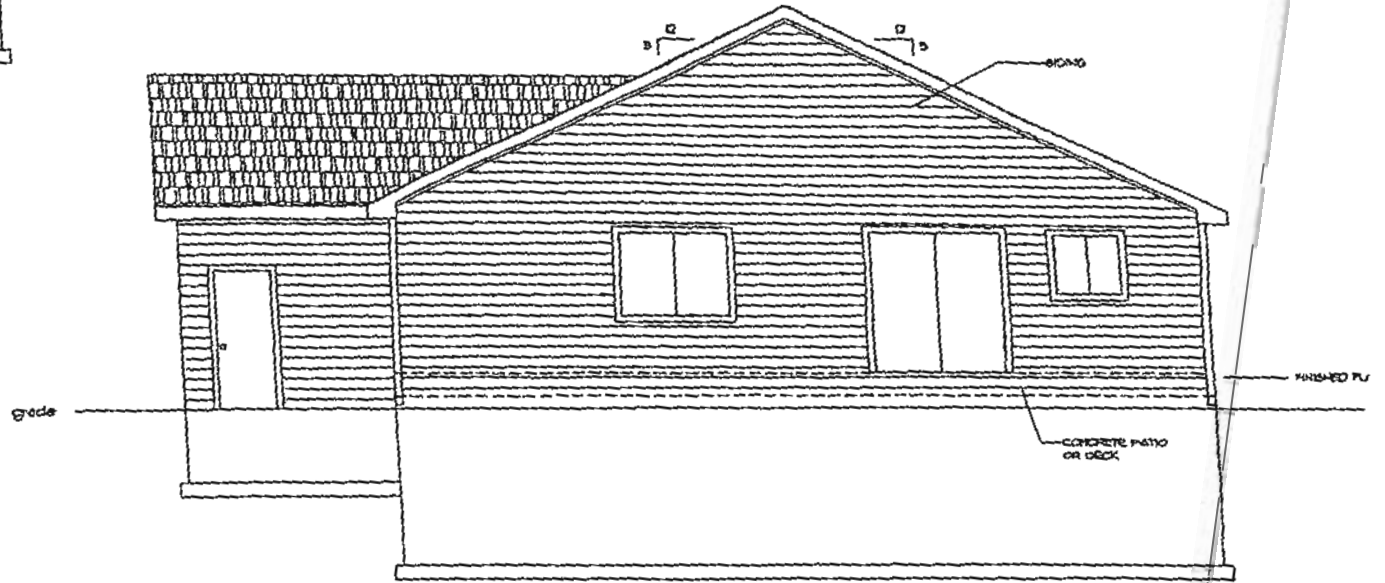
RECEIVED

SEP 02 2011

Rapid City Growth
Management Department



ELEVATION



REAR ELEVATION

SCALE: 3/16"=1'-0"

THIS DRAWING IS AN INSTRUMENT OF SERVICE AND MAY NOT
 BE REPRODUCED, COPIED, REPRODUCED, OR OTHERWISE
 REPRODUCED OR TRANSMITTED IN ANY FORM OR BY ANY
 MEANS, WITHOUT THE WRITTEN PERMISSION OF COMPLETE CAD SERVICES. WHILE EVERY ATTEMPT
 HAS BEEN MADE TO AVOID ERROR DURING THE PREPARATION
 OF THIS PLAN, COMPLETE CAD SERVICES CANNOT GUARANTEE IN
 INSTANCES, THE GENERAL CONTRACTOR SHALL CHECK ALL DIM
 AND OTHER DETAILS AND BE RESPONSIBLE FOR THE SAME.

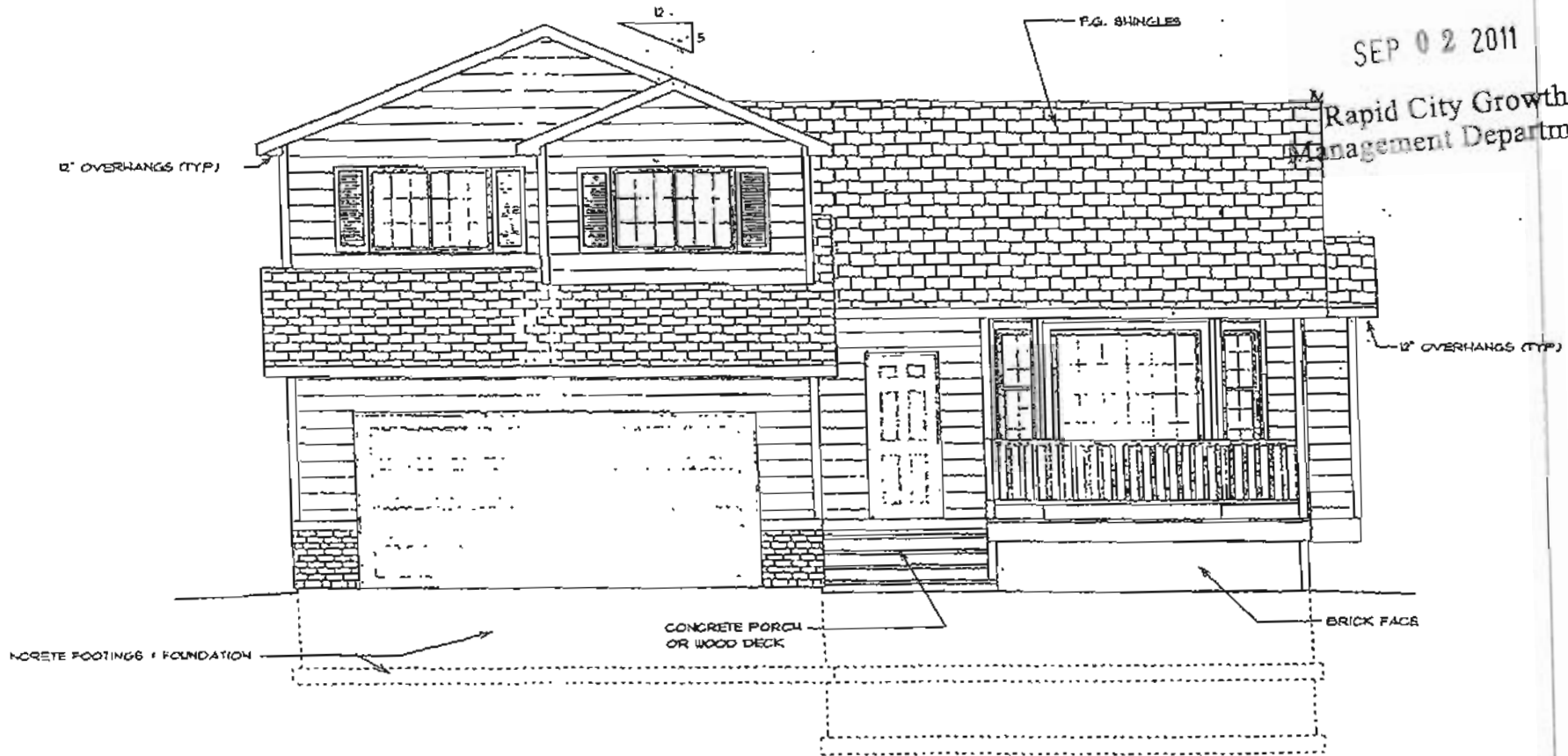
M06 S. P.



RECEIVED

SEP 02 2011

Rapid City Growth Management Department



FRONT ELEVATION

SCALE: 1/4" = 1'-0"

1340 5/8/11

NOTE: SEE SECTIONS SHEET 5 FOR ALL VERTICAL DIMENSIONS AND ADDITIONAL MATERIAL INFORMATION

RECEIVED

SEP 02 2011

Rapid City Growth
Management Department

12" OVERHANGS
(TYP.)

GLASS FIBER SHINGLES

OVERHANGS (TYP.)

BRICK

17'-8"

1340 sq. ft.



RECEIVED

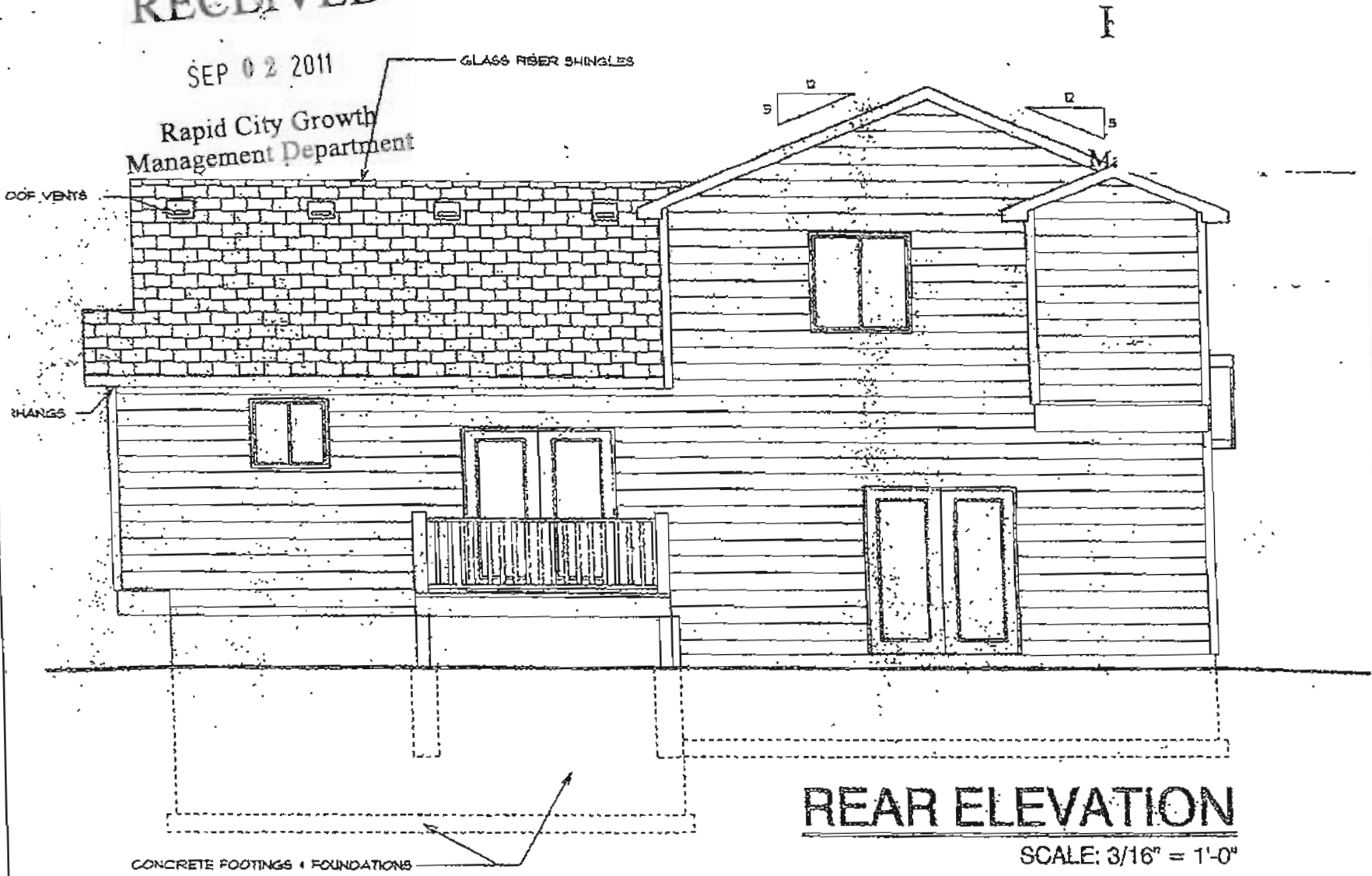
SEP 02 2011

Rapid City Growth Management Department

GLASS FIBER SHINGLES

COF VENTS

SHINGLES



REAR ELEVATION

SCALE: 3/16" = 1'-0"

CONCRETE FOOTINGS + FOUNDATIONS

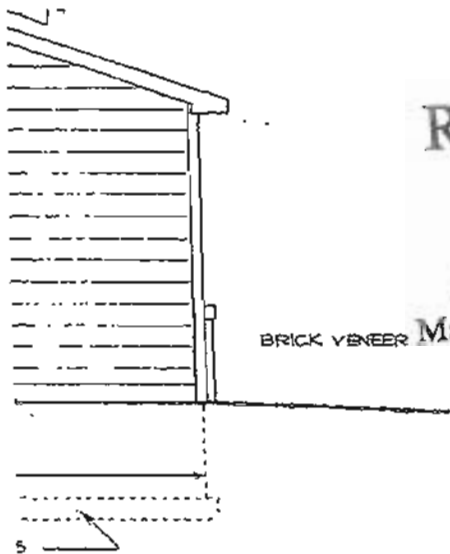
ELEVATION NOTES:

1340 S.F.

DATE:

DRAWN BY:

Handwritten initials



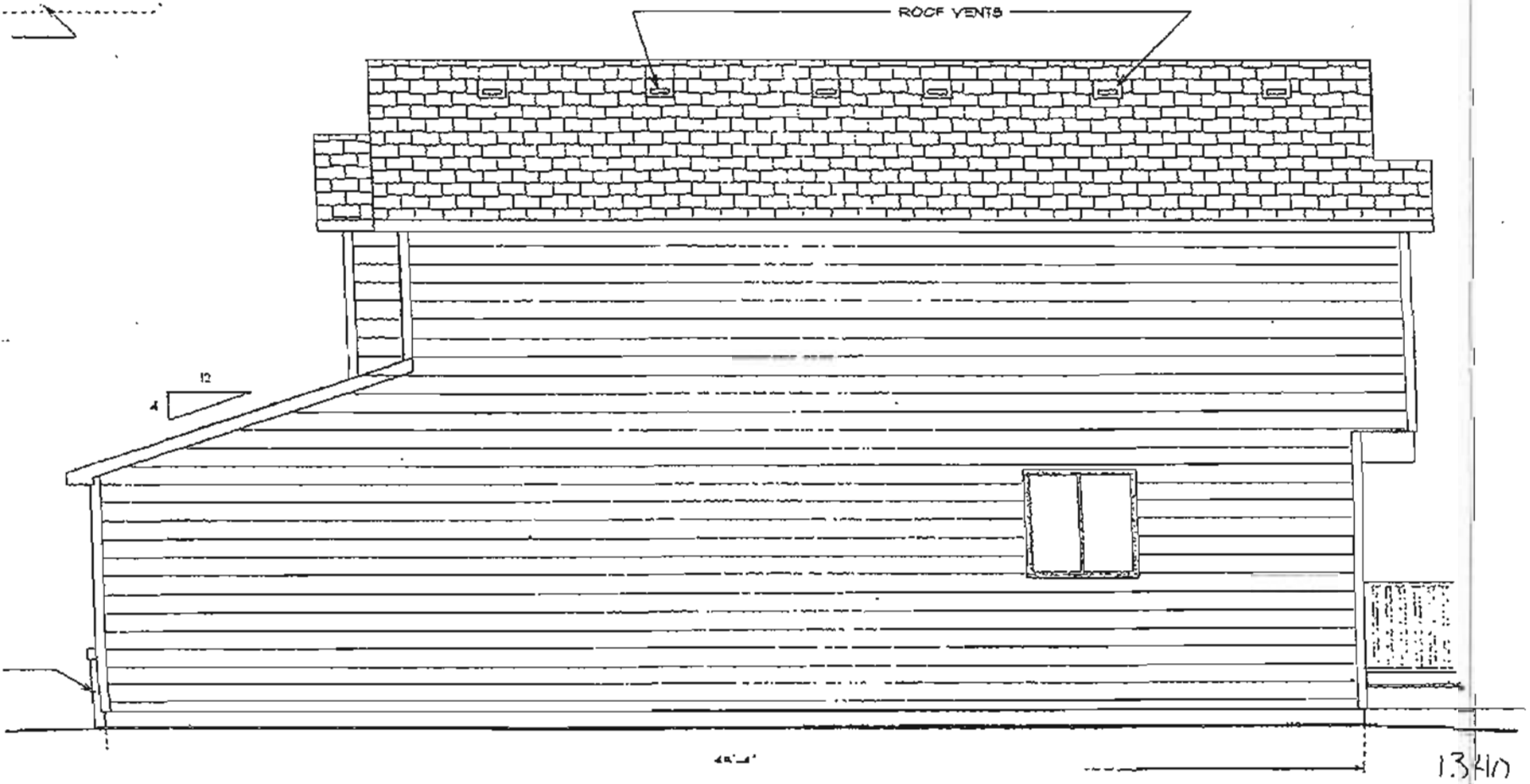
RECEIVED

SEP 02 2011

Rapid City Growth
Management Department

ELEVATION NOTES:

1. SEE SECTION SHEET 5 FOR MATERIAL INFORMATION & VERTICAL DIMENSIONS
2. ALL GRADE AT BUILDING EDGE IS TENTATIVE AND MAY VARY BASED ON ACTUAL SITE TOPOGRAPHY



13'10" .50 ft.