

TEMPORARY EASEMENT FOR TURN-AROUND, NW1/4 OF THE NW1/4 OF SECTION 28 & NE1/4 OF THE NE1/4 OF SECTION 29

T1N, R7E, BHM
RAPID CITY, PENNINGTON COUNTY, SOUTH DAKOTA

RECEIVED

SEP 02 2011

Rapid City Growth
Management Department

LOT 17

LOT 16

LOT 26
0.217 Ac.±

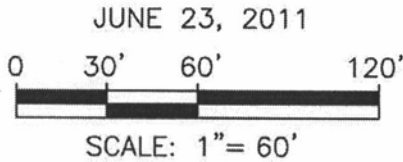
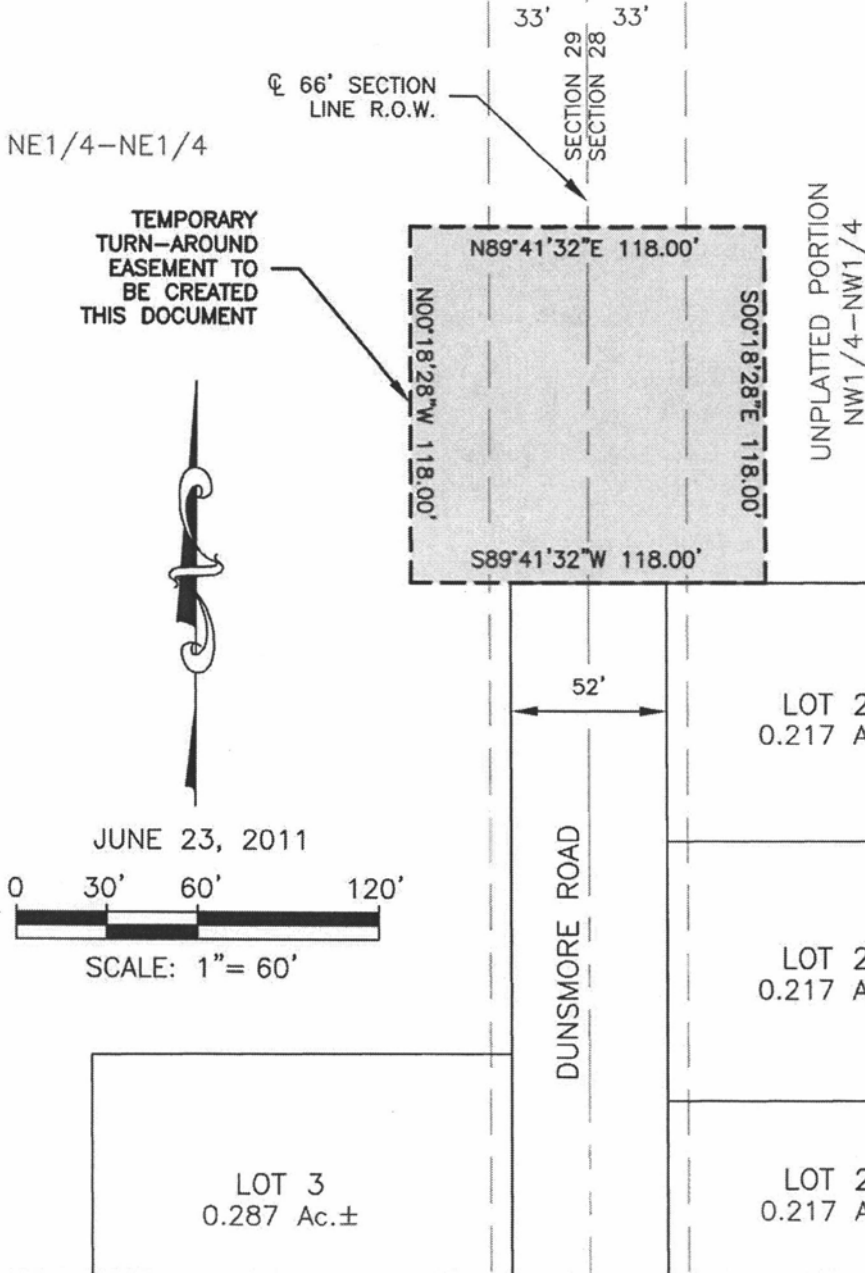
LOT 15

LOT 25
0.217 Ac.±

LOT 14

LOT 24
0.217 Ac.±

LOT 3
0.287 Ac.±



RENNER & ASSOCIATES, LLC.

616 SIXTH ST. * RAPID CITY, SD 57701
PHONE: 605/721-7310 * FAX: 605/721-7313
EMAIL: GARY@RENNERASSOC.COM

