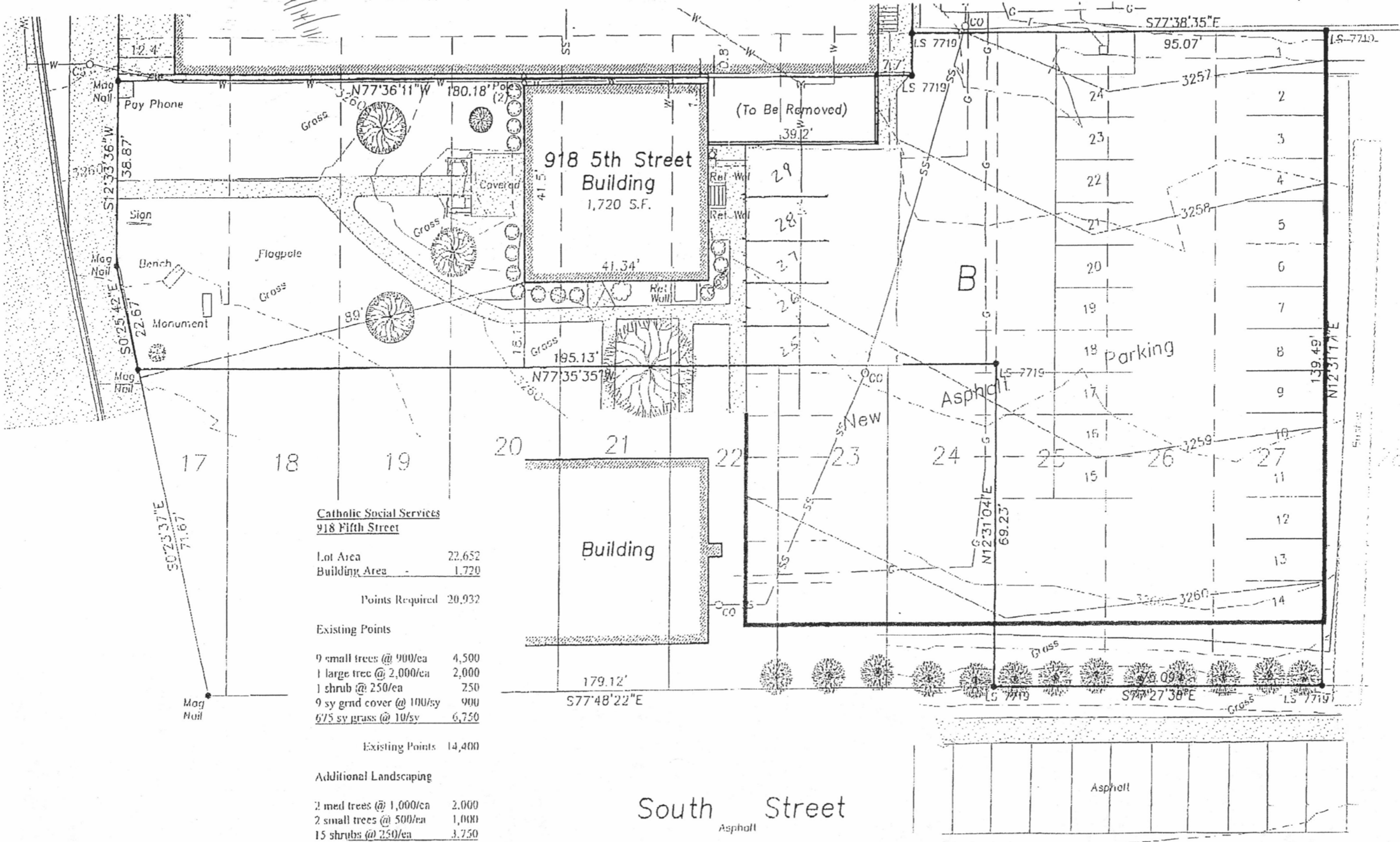


Handwritten: 15
9/14/11

p.1



**Catholic Social Services
918 Fifth Street**

Lot Area	22.652
Building Area	1.720
Points Required	20,932
Existing Points	
9 small trees @ 900/ea	4,500
1 large tree @ 2,000/ea	2,000
1 shrub @ 250/ea	250
9 sy grd cover @ 100/sy	900
675 sy grass @ 10/sy	6,750
Existing Points	14,400
Additional Landscaping	
2 med trees @ 1,000/ea	2,000
2 small trees @ 500/ea	1,000
15 shrubs @ 250/ea	3,750
Additional Points	6,750
TOTAL POINTS	21,150

RECEIVED

SEP 14 2011

Rapid City Growth
Management Department

Jul 30 08 08:10a