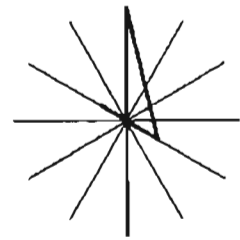
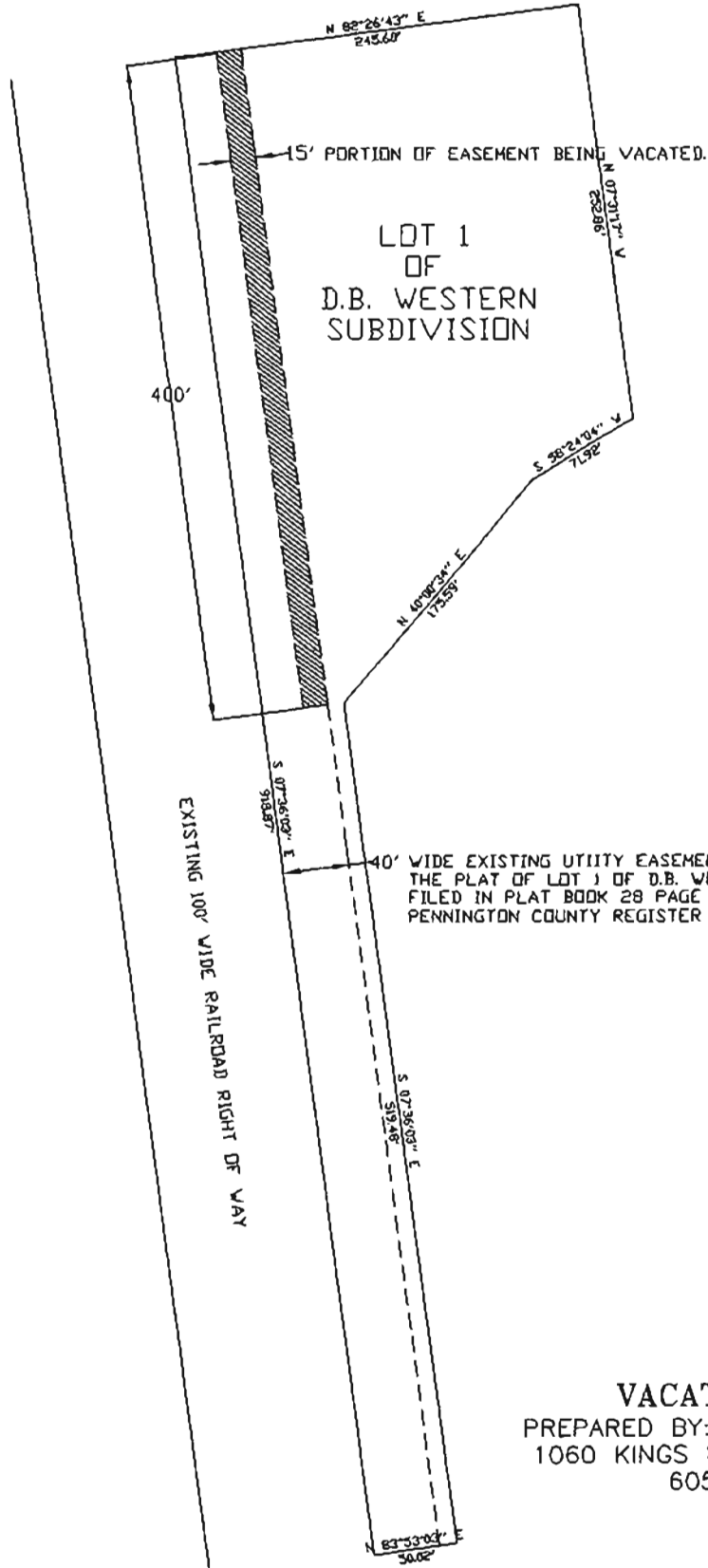


VACATION EXHIBIT A

LEGAL DESCRIPTION: LOT 1 OF D.B. WESTERN SUBDIVISION LOCATED IN
NW1/4 OF SW1/4 SECTION 17, T1N, R8E, BHM.
RAPID CITY, PENNINGTON COUNTY, SOUTH DAKOTA.



DATE: 07-22-2011

SCALE: 1"=100'



EXISTING 100' WIDE RAILROAD RIGHT OF WAY

40' WIDE EXISTING UTILITY EASEMENT AS SHOWN ON THE PLAT OF LOT 1 OF D.B. WESTERN SUBDIVISION FILED IN PLAT BOOK 28 PAGE 88 AT THE PENNINGTON COUNTY REGISTER OF DEEDS OFFICE.



VACATION EXHIBIT A
PREPARED BY: DAVIS ENGINEERING, INC.
1060 KINGS ROAD--RAPID CITY, SD
605-341-3095

Handwritten mark resembling the number '9'.