

LOT 2R AND LOT 3R-2 OF BLOCK 1, MENARD SUBDIVISION

(Formerly Lot 2 & Lot 3R of Block 1 of Menard Subdivision)

LOCATED IN THE NE¹/₄ OF THE SW¹/₄,

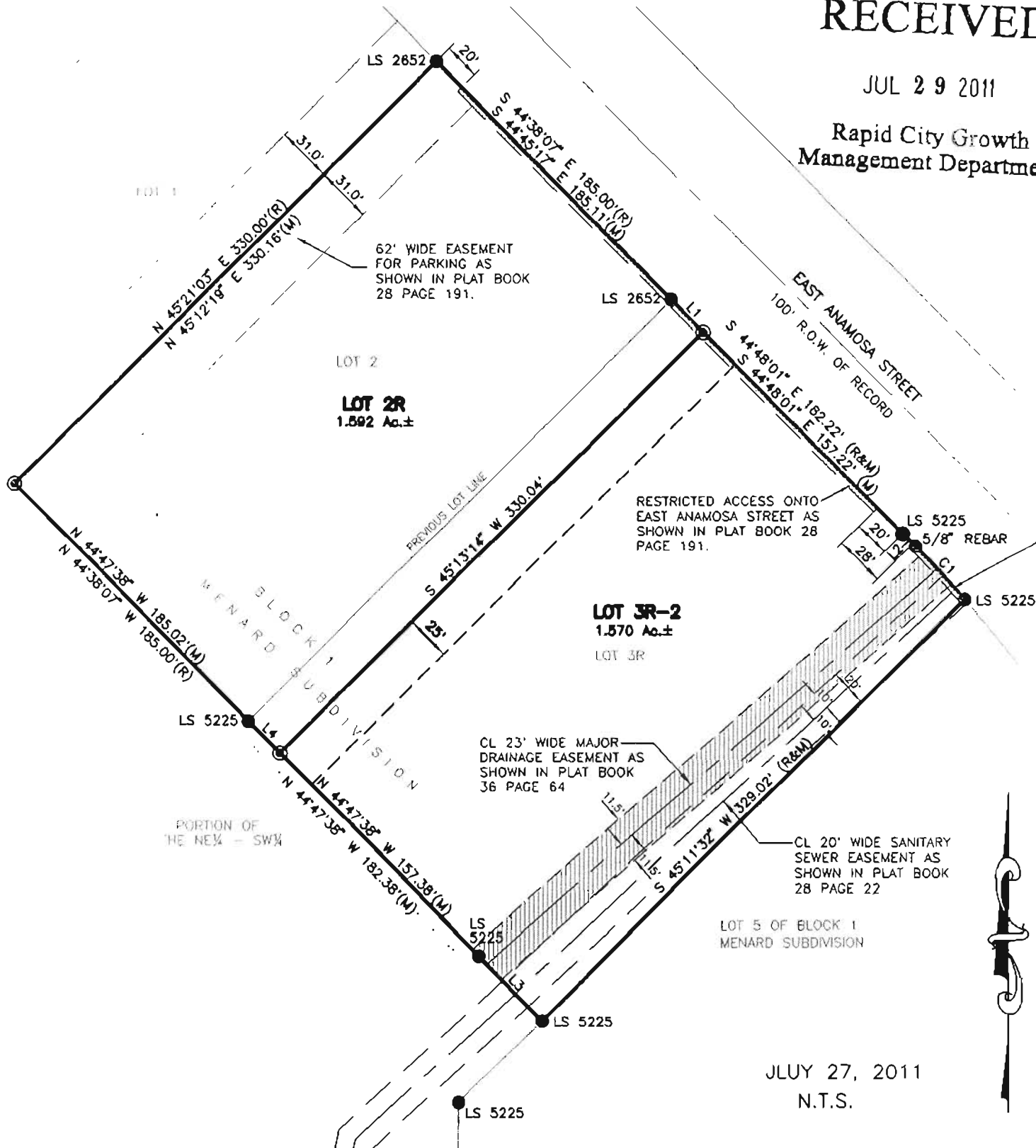
SECTION 32, T2N, R8E, B.H.M.,

RAPID CITY, PENNINGTON COUNTY, SOUTH DAKOTA

RECEIVED

JUL 29 2011

Rapid City Growth
Management Department



LOT 3R-2
1.570 Ac.±

LOT 2R
1.592 Ac.±