

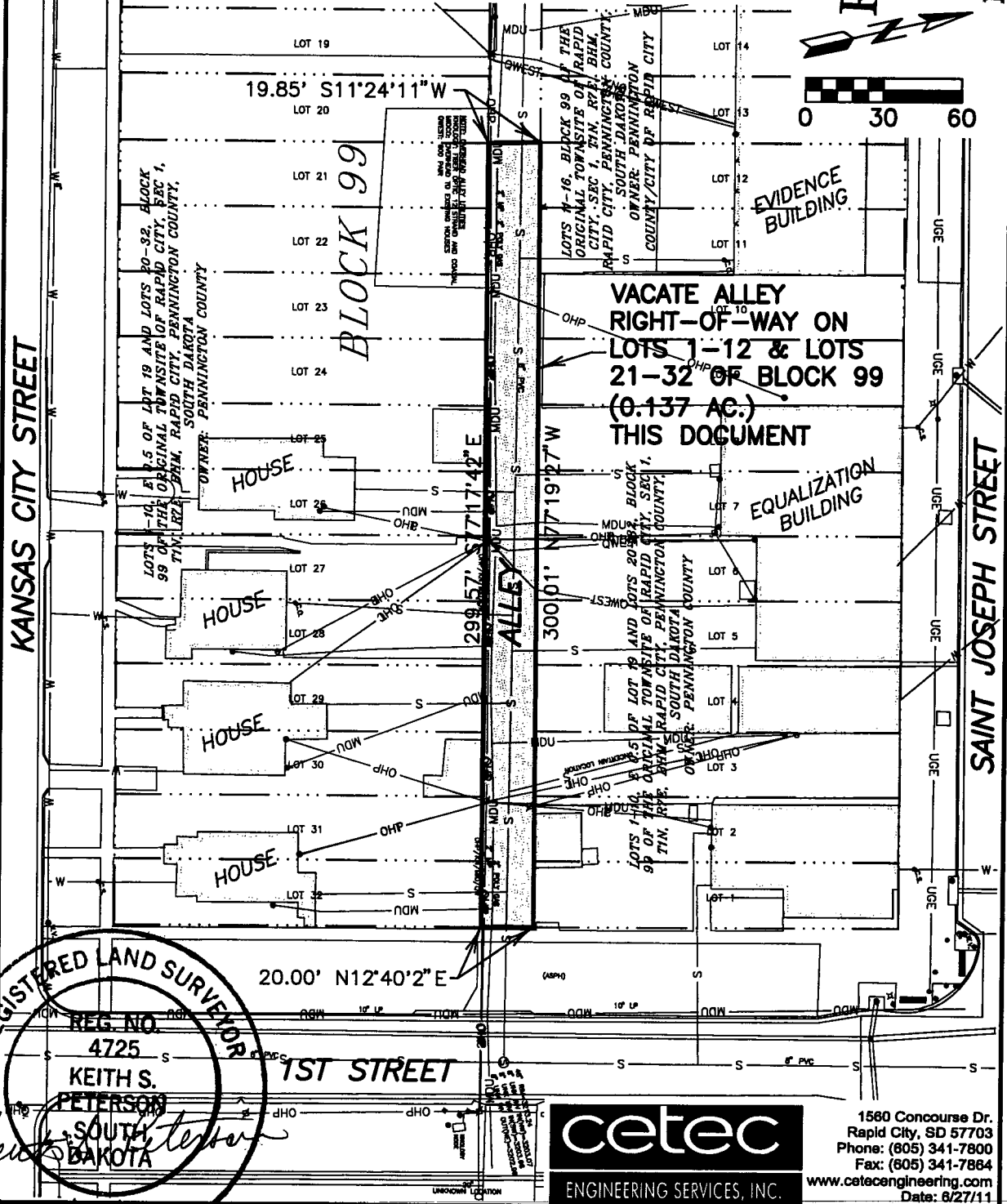
EXHIBIT "A"

VACATION OF ALLEY RIGHT-OF-WAY ADJACENT TO
LOTS 1 - 12 & 21 - 32 OF BLOCK 99 OF
THE ORIGINAL TOWNSITE OF THE CITY OF RAPID CITY,
LOCATED IN SECTION 1, T1N, R7E, BHM.
RAPID CITY, PENNINGTON COUNTY, SD

RECEIVED

JUL - 8 2011

Rapid City Growth
Management Department



REGISTERED LAND SURVEYOR
REG. NO. 4725
KEITH S. PETERSON
SOUTH DAKOTA
Keith S. Peterson
7/08/11

cetec
ENGINEERING SERVICES, INC.

1560 Concourse Dr.
Rapid City, SD 57703
Phone: (605) 341-7800
Fax: (605) 341-7864
www.cetecengineering.com
Date: 6/27/11