

PLANNED DEVELOPMENT SUBMITTAL

CITY OF RAPID CITY FIRE DEPARTMENT FIRE STATION #4 ADDITION

**FIRE STATION #4
 ADDITION**
 RAPID CITY FIRE DEPARTMENT
 RAPID CITY, SOUTH DAKOTA 6/10/2011

Drawn By TB

Checked By TB

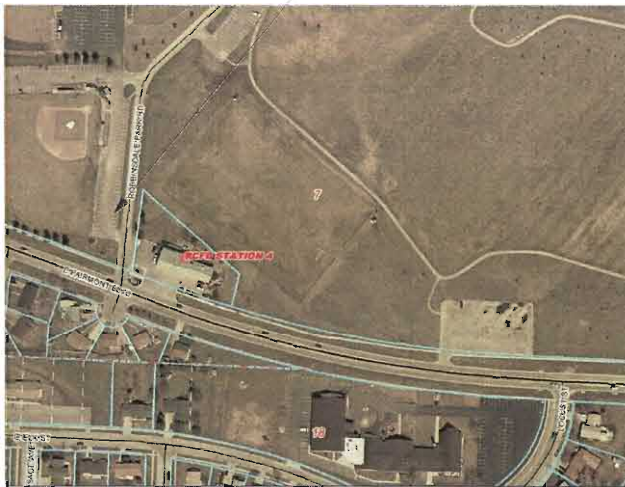


SHEET INDEX	
ID	Name
A-001	COVER SHEET
A-101	1st FLOOR & LOWER LEVEL PLANS
A-201	NORTH ELEVATION
A-202	EAST ELEVATION
A-203	SOUTH ELEVATION
A-204	WEST ELEVATION
A-701	1st FLOOR & LOWER LEVEL REFLECTIVE CEILING PLAN
A-702	1st FLOOR & LOWER LEVEL FINISH PLAN
A-901	Perspective

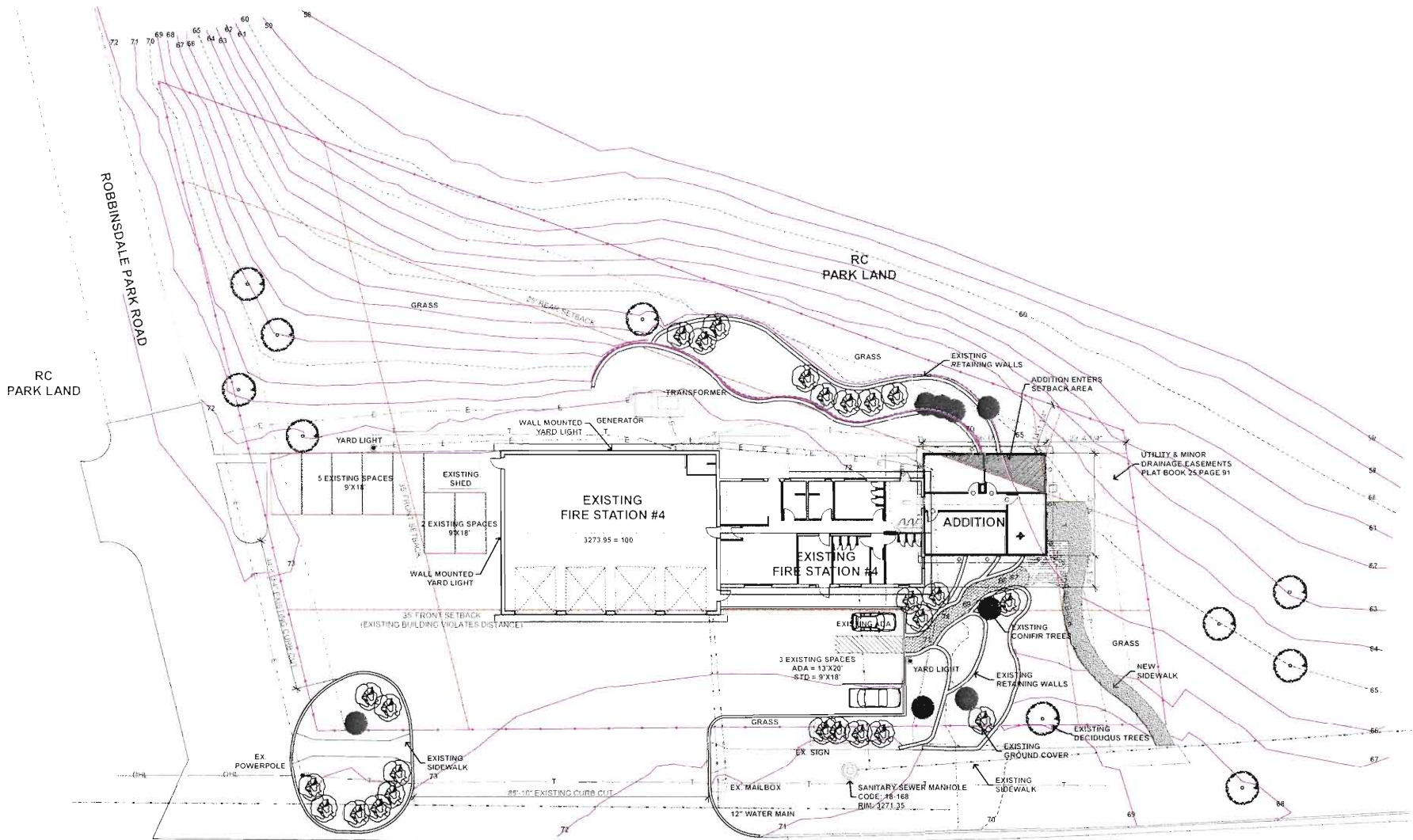
ORDINANCE INFORMATION

TOTAL SITE AREA	= 35,134 GSF
TOTAL BUILDING AREA	= 6,064 GSF
TOTAL LANDSCAPE POINTS	= 29,070 PTS.
EXISTING LANDSCAPING	
TREES LARGE	= 3 X 2,000 = 6,000 PTS.
TREES MEDIUM	= 15 X 1,000 = 15,000 PTS.
SHRUBS	= 15 X 500 = 7,500 PTS.
GRASS	= 10 X 250 = 2,500 PTS.
	= 16.74 SF/9 = 18,601 PTS.
TOTAL EXISTING LANDSCAPE POINTS	= 49,601 PTS. EXCEEDS REQUIREMENTS
EXISTING PARKING	= 9 STANDARD SPACES & 1 ADA SPACE
FIRE STATION BUILDING	= 21,000 GSF
	= 6,064/1,000 = 6
	= 6 X 2 = 12 SPACES REQUIRED > 10 EXISTING

***NOTE: RCFD USES ADJACENT PARKING LOT ALONG ROBBINSDALE PARK ROAD AS OVERFLOW.



2 CITY SITE AREA MAP
 SCALE: 1" = 1'-0"



RECEIVED

JUN 10 2011

Rapid City Growth Management Department

RESIDENTIAL ZONE

PROPERTY DESCRIPTION
 700 EAST FAIRMONT BOULEVARD
 LOT 1 OF ROBBINSDALE PARK ADDITION
 RAPID CITY, PENNINGTON COUNTY, SOUTH DAKOTA

1 SITE PLAN
 SCALE: 1" = 20'

0 10' 20' 40'

baffuto architecture
 art + technology equals architecture
 Studio Location: 625 West Boulevard • In Rapid City • West Boulevard Historic District
 Rapid City, South Dakota 57103 • bbaffuto@rcfd.com • Phone/Fax: 605.341.7501
 Business & Mailing Location: 1025 Duffer Drive Rapid City, South Dakota 57107
 Phone: 605.341.7401
 b@baffuto.com

