

PLANNED DEVELOPMENT SUBMITTAL

A-201

Sheet Number

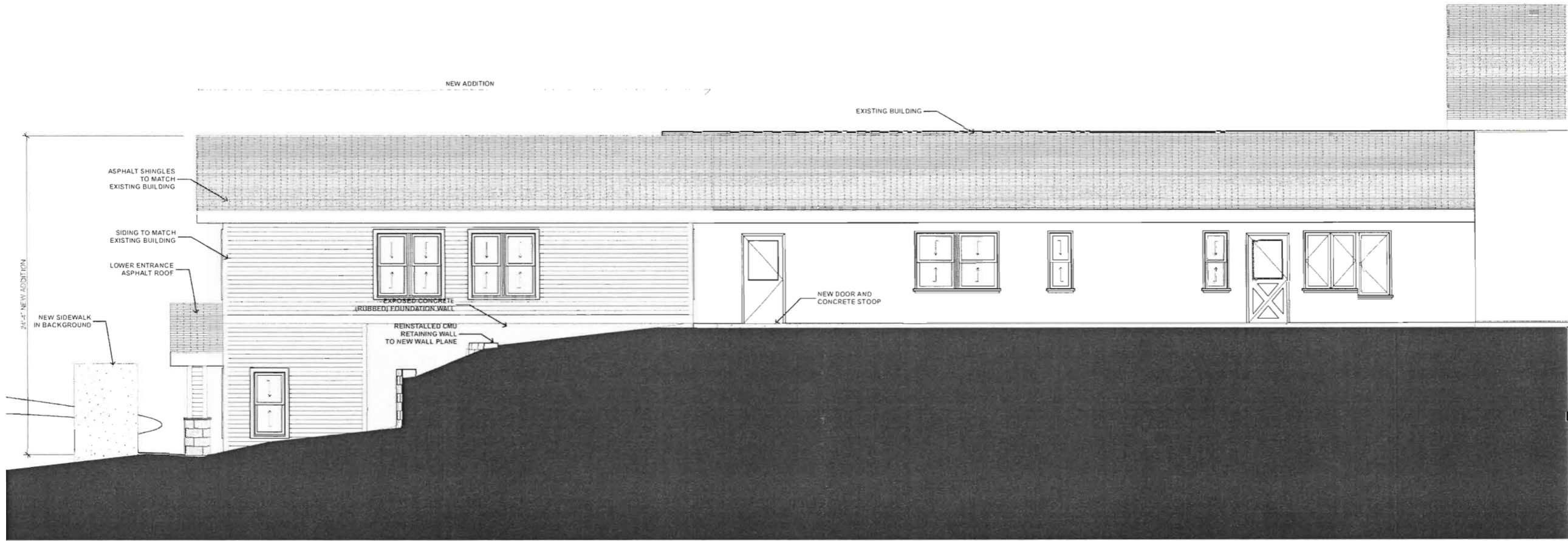
11 005

Project Number

**FIRE STATION #4
ADDITION**
RAPID CITY FIRE DEPARTMENT
RAPID CITY, SOUTH DAKOTA 6/10/2011

Drawn For TB

Checked For TB



1 NORTH ELEVATION
SCALE: 1/8" = 1'-0"



baffuto architectura
art + technology equals architecture
Studio Location: 623 West Broadway • in Rapid City • West Broadway Historic District
Rapid City, South Dakota 57701 • baffuto@baf.com • www.baf.com • Phone/Fax: 605.341.7501
Business & Mailing Location: 1025 Duffer Drive, Rapid City, South Dakota 57702
Phone: 605.341.7501
ask for me and as a result we will serve the Lord.



PLANNED DEVELOPMENT SUBMITTAL

A-202

Sheet Number

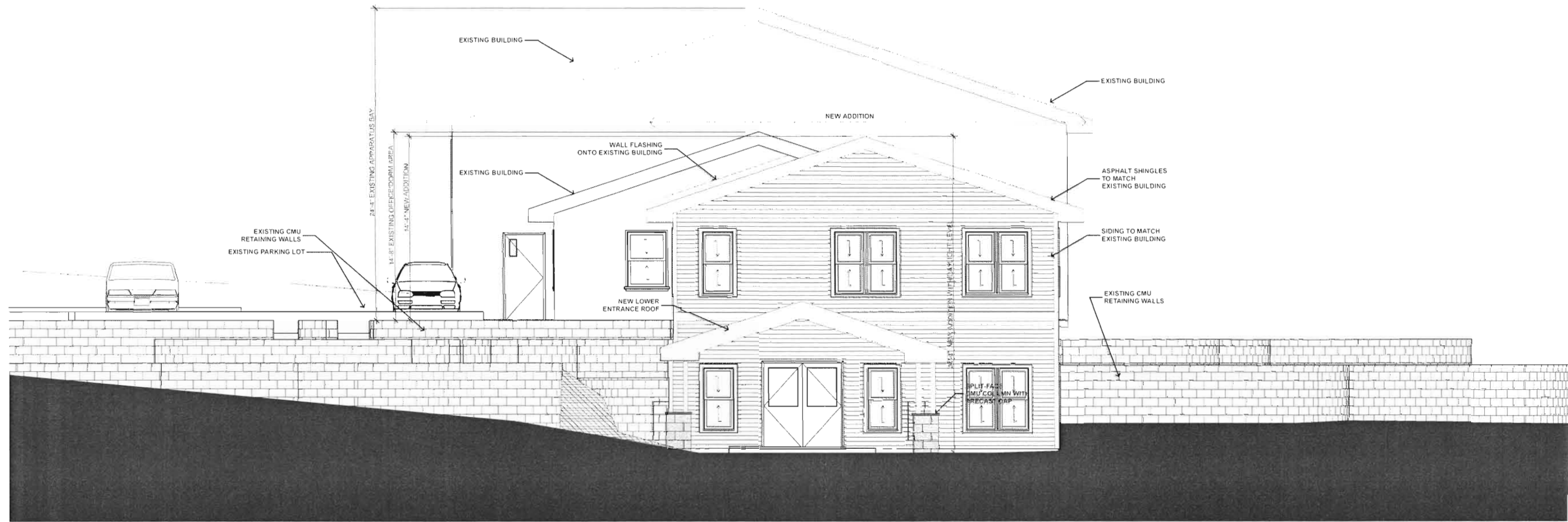
11 005

Project Number

**FIRE STATION #4
ADDITION**

RAPID CITY FIRE DEPARTMENT
RAPID CITY, SOUTH DAKOTA 6/10/2011

Drawn By: TB
Checked By: TB



1 EAST ELEVATION
SCALE: 1/4" = 1'-0"



architectura

baffuto

art + technology equals architecture
Studio Location: 62 West Boulevard • In Rapid City's West Boulevard Historic District
Rapid City, South Dakota 57701 • baffuto.com • Phone: Fax: 605.341.7507
Business & Mailing Location: 1025 Dufferin Drive, Rapid City, South Dakota 57702
Phone: 605.341.3400
Join our team and we will serve the Lord



Copyright 2010 Ownership of Documents

This document and the ideas and designs incorporated herein, as an instrument of professional service, is the property of baffuto architecture and is not to be used in whole or part by for this or any other project without the expressed authorization of baffuto architecture

PLANNED DEVELOPMENT SUBMITTAL

A-203

Sheet Number

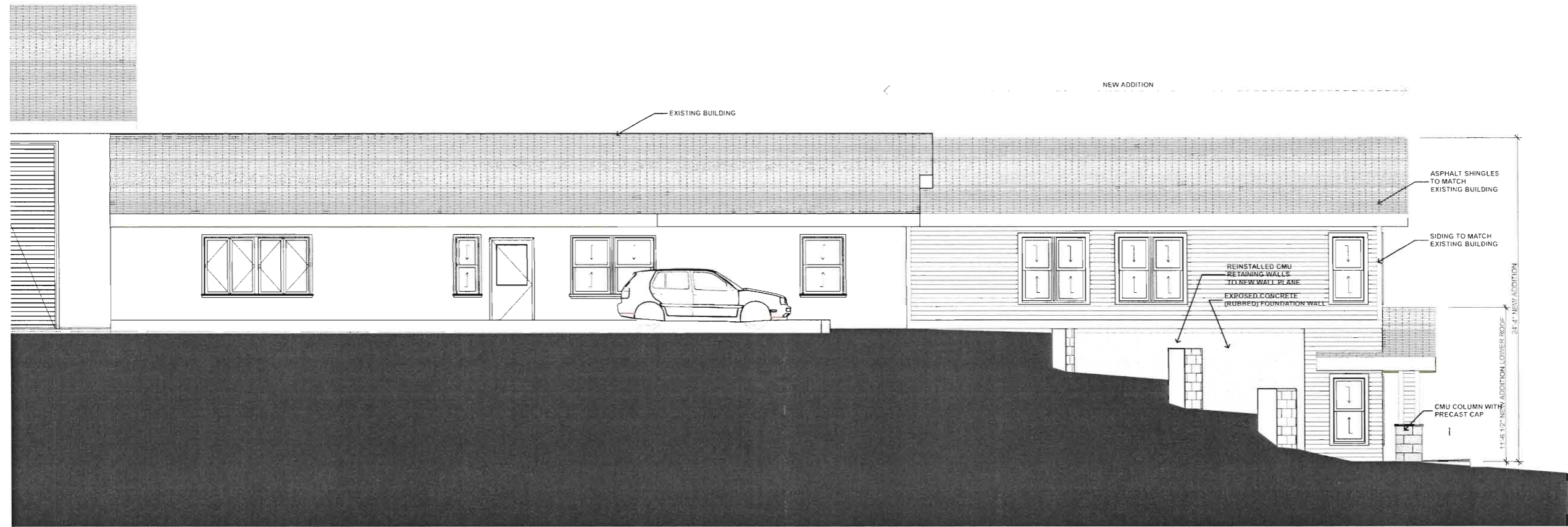
11 005

Project Number

**FIRE STATION #4
ADDITION**
RAPID CITY FIRE DEPARTMENT
RAPID CITY, SOUTH DAKOTA 6/10/2011

Drawn For TB

Checked For TB



1 SOUTH ELEVATION
SCALE: 1/4" = 1'-0"



architectura
baffuto
art + technology equals architecture
Studio Location: 623 West Boulevard • In Rapid City, South Dakota
Rapid City, South Dakota 57701 • baffuto@baffuto.com • Phone: 605.341.7501
Business & Mailing Location: 1025 Duffer Drive, Rapid City, South Dakota 57702
Phone: 605.341.7501
Imaginazione... as for we build, we will serve the Lord



Copyright 2010 Ownership of Documents

This document and the ideas and designs incorporated herein, as an instrument of professional service, is the property of baffuto architecture and is not to be used in whole or part by for this or any other project without the expressed authorization of baffuto architecture

PLANNED DEVELOPMENT SUBMITTAL

A-204

Sheet Number

11 005

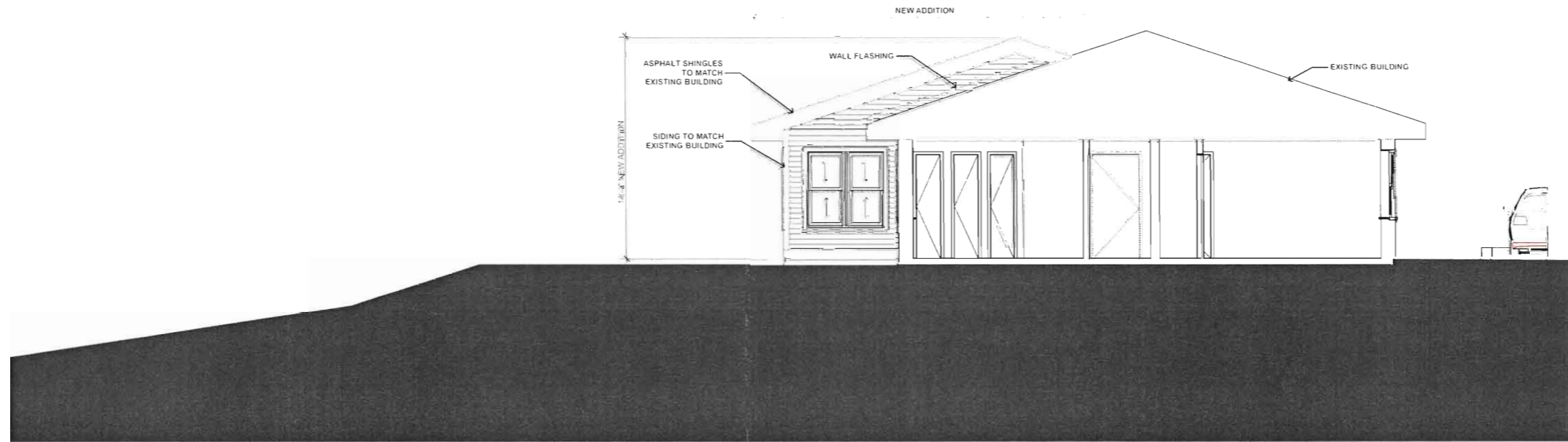
Project Number

**FIRE STATION #4
ADDITION**

**RAPID CITY FIRE DEPARTMENT
RAPID CITY, SOUTH DAKOTA 6/10/2011**

Drawn By TB

Checked By TB



1 WEST ELEVATION
SCALE: 1/4" = 1'-0"



architectura

baffuto

art + technology equals architecture
Studio Location: 623 West Boulevard • In Rapid City & West (Boulevard) Historic District
Rapid City, South Dakota 57701 • baffuto@baffuto.com • Phone: 605.341.7501
Business & Mailing Location: 1025 Durfee Drive • Rapid City, South Dakota 57702
Phone: 605.341.7501
This is our business, we will serve the Lord

